

FOR LEASE

EISENHOWER COMMERCE CENTER
1100 EISENHOWER PLACE
ANN ARBOR, MI 48108



PROPERTY FEATURES:

- 20,000 SF to 40,000 SF available - office/flex
- Immediate access to I-94 and US-23
- Five minutes to downtown Ann Arbor
- At the hub of Ann Arbor's thriving research and high technology industries
- Locally owned and professionally managed
- Surrounded by other business parks and hotels
- Abundance of free parking adjacent to building
- New monument signage throughout campus
- Nestled in a peaceful, wooded setting surrounded by natural landscaping
- Attractive brick exterior
- Truck-well delivery bay



FOR MORE INFORMATION PLEASE CONTACT:

STEVE EISENSHTADT

steve.eisenshtadt@freg.com

DAVID LAW

david.law@freg.com

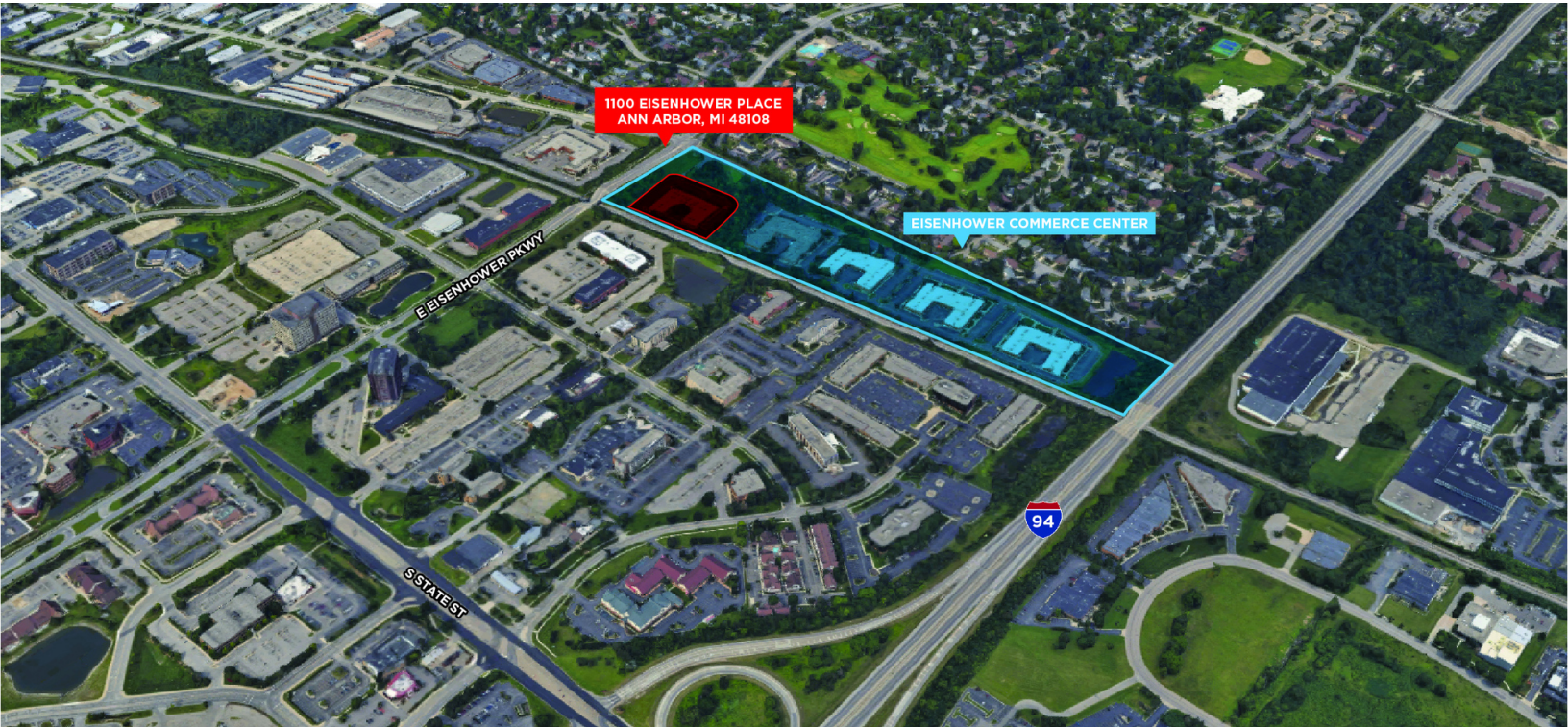
248.324.2000

eCODE 87

The information provided herein along with any attachment(s) was obtained from sources believed to be reliable, however, Friedman Real Estate makes no guarantees, warranties, or representations as to the completeness or accuracy of such information and legal counsel is advised. All information provided is subject to verification and no liability for reliance on such information or errors or omissions is assumed. The presentation of this property is submitted subject to errors, omissions, change of price or conditions, prior sale or lease, or withdrawal without notice. Copyright © 2020 Friedman Real Estate. All rights reserved.

FOR LEASE

EISENHOWER COMMERCE CENTER
1100 EISENHOWER PLACE
ANN ARBOR, MI 48108



AVAILABLE SUITES

SPACE	SPACE USE	LEASE RATE	LEASE TYPE	SIZE (SF)	DATE AVAILABLE
BUILDING 1100	Office Building	\$15.00 SF/yr	NNN	20,000 - 40,000 SF	4/1/2020

FOR MORE INFORMATION PLEASE CONTACT:

STEVE EISENSHTADT steve.eisenshtadt@freg.com

DAVID LAW david.law@freg.com

248.324.2000

eCODE 87

FOR LEASE

EISENHOWER COMMERCE CENTER
1100 EISENHOWER PLACE
ANN ARBOR, MI 48108



FOR MORE INFORMATION PLEASE CONTACT:

STEVE EISENSHTADT steve.eisenshtadt@freg.com

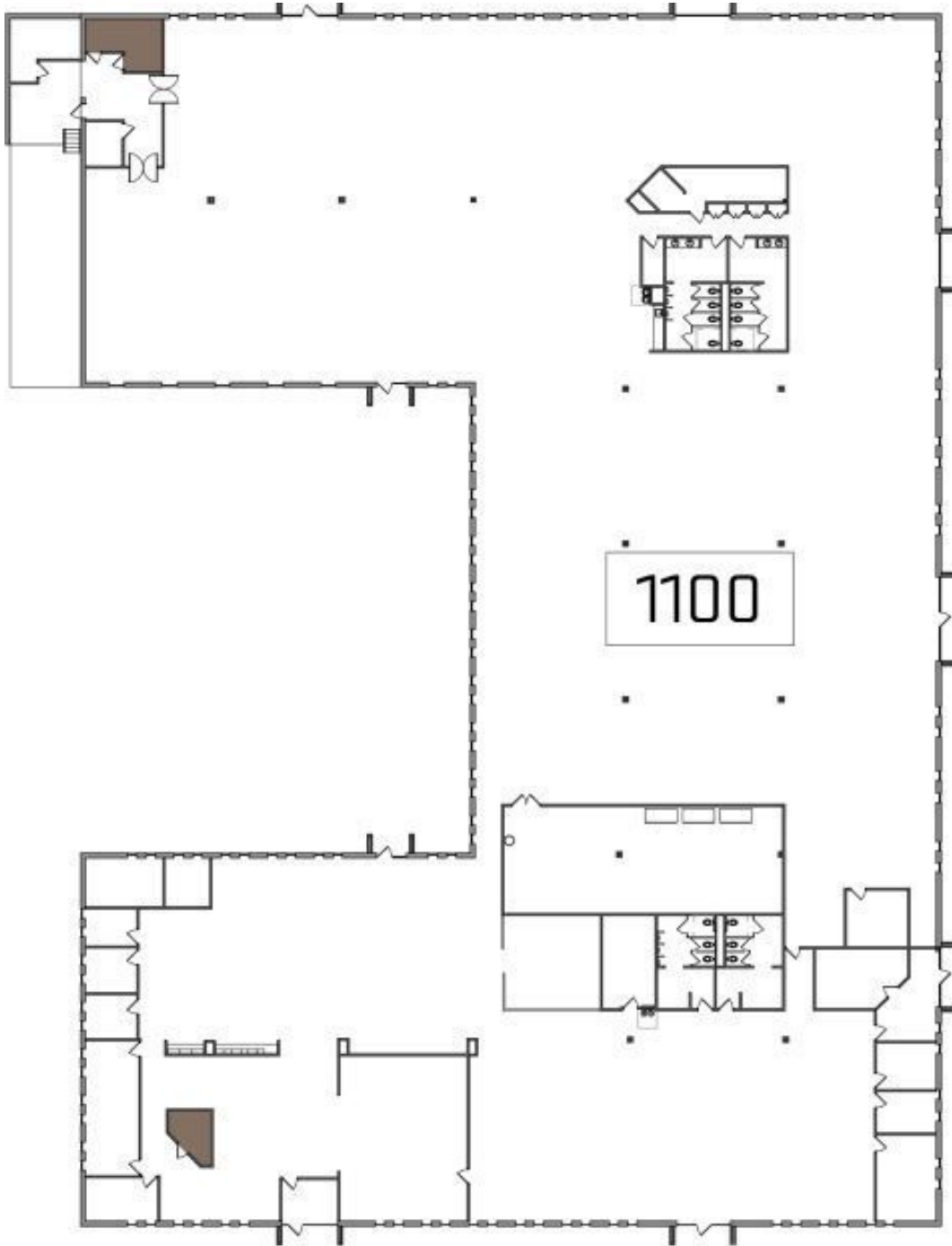
DAVID LAW david.law@freg.com

248.324.2000

eCODE 87

FOR LEASE

EISENHOWER COMMERCE CENTER
1100 EISENHOWER PLACE
ANN ARBOR, MI 48108



Suite 1100 - Level 1 Existing Composite Floor Plan

1" = 40'-0"

FOR MORE INFORMATION PLEASE CONTACT:

STEVE EISENSHTADT steve.eisenshtadt@freg.com

DAVID LAW david.law@freg.com

248.324.2000

eCODE 87