

Free-standing office or retail building on Highland Drive



Property Highlights

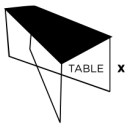
- 3,234 SF
- \$15.00 PSF + NNN
- Zoning: C2
- Excellent visibility from Highland Drive
- 12 Parking Stalls
- Exterior remodel in planning stages

Demographics

	1 Mile	3 Mile	5 Mile
Median Age	35.5	34.8	33.9
Population			
Residential	17,406	156,256	313,192
Employees	10,039	87,589	252,377
Income			
Median	\$59,047	\$56,128	\$53,067
Average	\$77,347	\$76,619	\$74,605

Source: U.S. Census Bureau, Census 2010 Data. Esri forecasts for 2016 and 2021.

Surrounding Businesses:



Mariko Mimnaugh
Director
+1 801 303 5481
mariko@comre.com

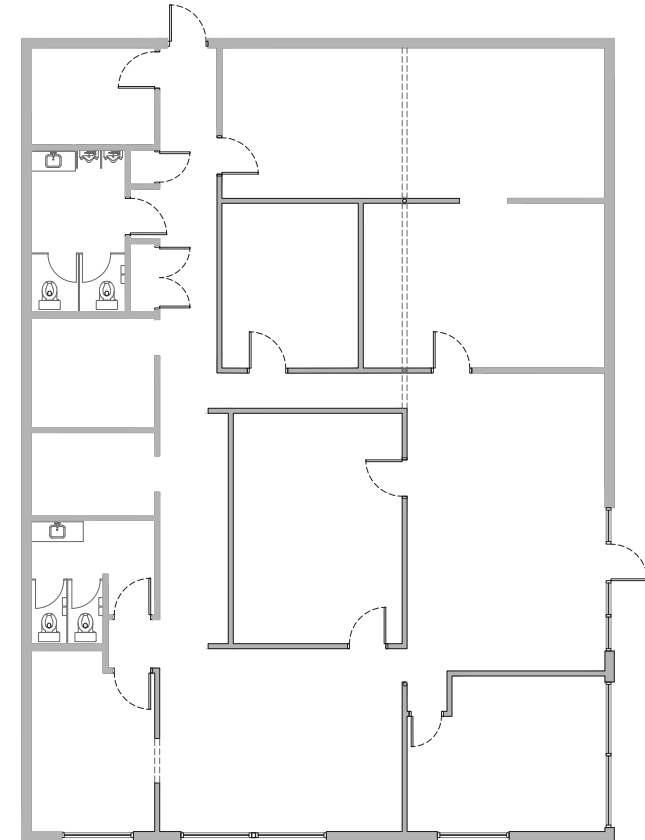
170 South Main Street, Suite 1600
Salt Lake City, UT 84101
Main +1 801 322 2000
Fax +1 801 322 2040
comre.com

Independently Owned and Operated / A Member of the Cushman & Wakefield Alliance

Cushman & Wakefield Copyright 2016. No warranty or representation, express or implied, is made to the accuracy or completeness of the information contained herein, and same is submitted subject to errors, omissions, change of price, rental or other conditions, withdrawal without notice, and to any special listing conditions imposed by the property owner(s). As applicable, we make no representation as to the condition of the property (or properties) in question. (path: G:\1 - Projects\Chikaraishi, M\1 - Flyers\3369sHighlandDr)



Conceptual Rendering



Floor Plan

Mariko Mimnaugh
Director
+1 801 303 5481
mariko@comre.com

170 South Main Street, Suite 1600
Salt Lake City, UT 84101
Main +1 801 322 2000
Fax +1 801 322 2040
comre.com

Independently Owned and Operated / A Member of the Cushman & Wakefield Alliance

Cushman & Wakefield Copyright 2016. No warranty or representation, express or implied, is made to the accuracy or completeness of the information contained herein, and same is submitted subject to errors, omissions, change of price, rental or other conditions, withdrawal without notice, and to any special listing conditions imposed by the property owner(s). As applicable, we make no representation as to the condition of the property (or properties) in question. (path: G:\1 - Projects\Chikaraishi, M\1 - Flyers\3369sHighlandDr)



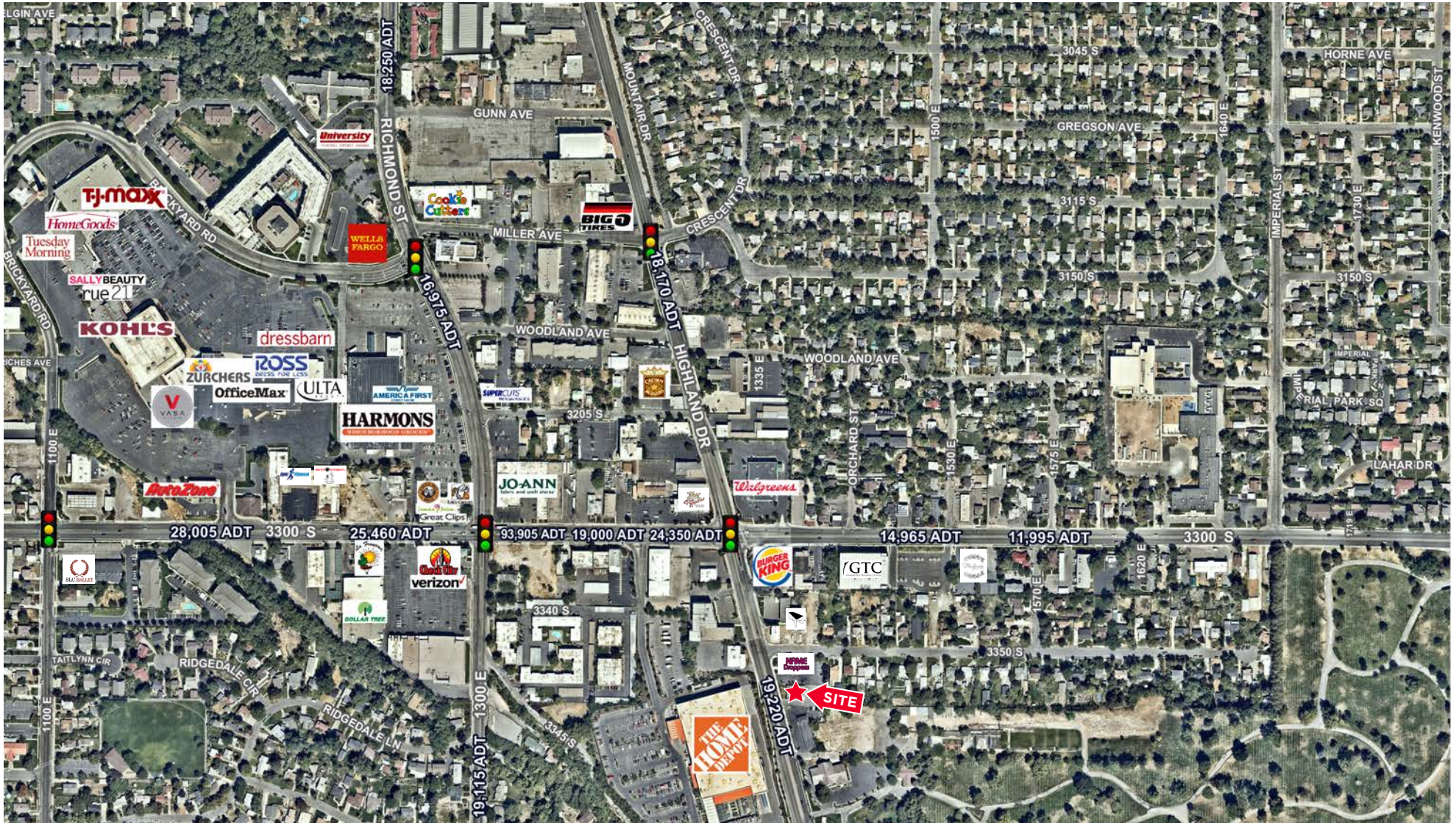
**CUSHMAN &
WAKEFIELD**

Commerce

FOR LEASE

3369 S Highland Drive

Millcreek City, Utah 84103



Mariko Mimnaugh
Director
+1 801 303 5481
mariko@comre.com

170 South Main Street, Suite 1600
Salt Lake City, UT 84101
Main +1 801 322 2000
Fax +1 801 322 2040
comre.com

Independently Owned and Operated / A Member of the Cushman & Wakefield Alliance

Cushman & Wakefield Copyright 2016. No warranty or representation, express or implied, is made to the accuracy or completeness of the information contained herein, and same is submitted subject to errors, omissions, change of price, rental or other conditions, withdrawal without notice, and to any special listing conditions imposed by the property owner(s). As applicable, we make no representation as to the condition of the property (or properties) in question. (path: G:\1 - Projects\Chikaraishi, M\1 - Flyers\3369SHighlandDr)