

FOR LEASE

±198,501 SF INDUSTRIAL SPACE



Warehouse Solutions
for Last-Mile Logistics

MERIDIAN CAMPUS CORPORATE PARK | BLDG F | 9225 POLARIS LANE NE | LACEY, WA 98516



PROPERTY SUMMARY

LOCATION	Located 30 minutes south of the Port of Tacoma with immediate access to Interstate 5	LOADING	Double-loaded
BUILDING SIZE	198,501 Total SF - 100% Insulated Office Area A: 3,820 SF Office Area B: 1,960 SF Office Area C: 1,480 SF	CLEAR HEIGHT	30'
ZONING	Light Industrial	SPRINKLER	ESFR sprinkler system
TRUCK DOORS	69 9' x 10' dock doors: 8 in-pit and 21 EOD levelers, 37 dock seals, 9 lights 3 12' x 14' drive-in door	LIGHTING	LED energy efficient lighting 2% skylight coverage
PARKING	±210 parking spaces	ELECTRIC	3-phase power, 2,000 amps, Backed up by generator



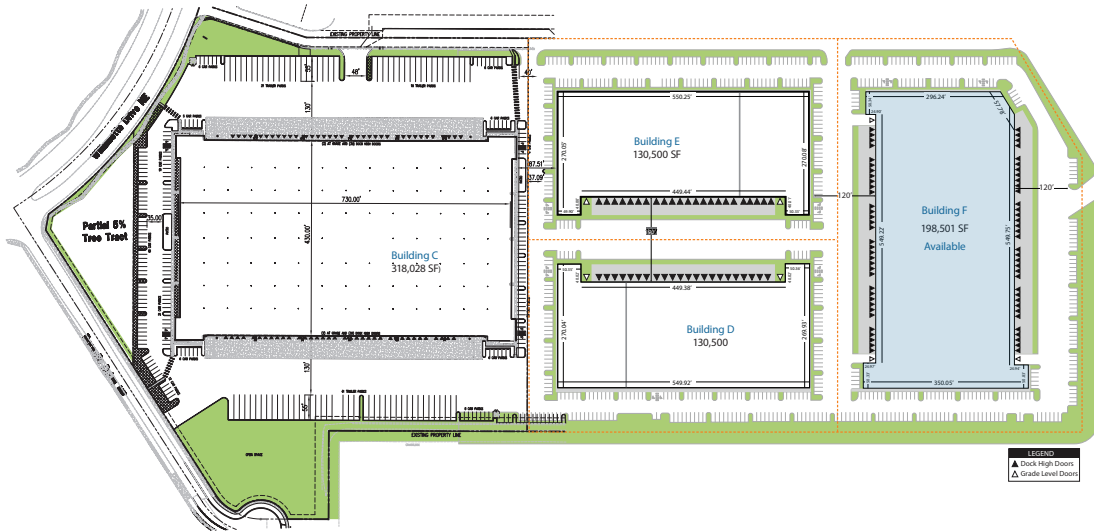
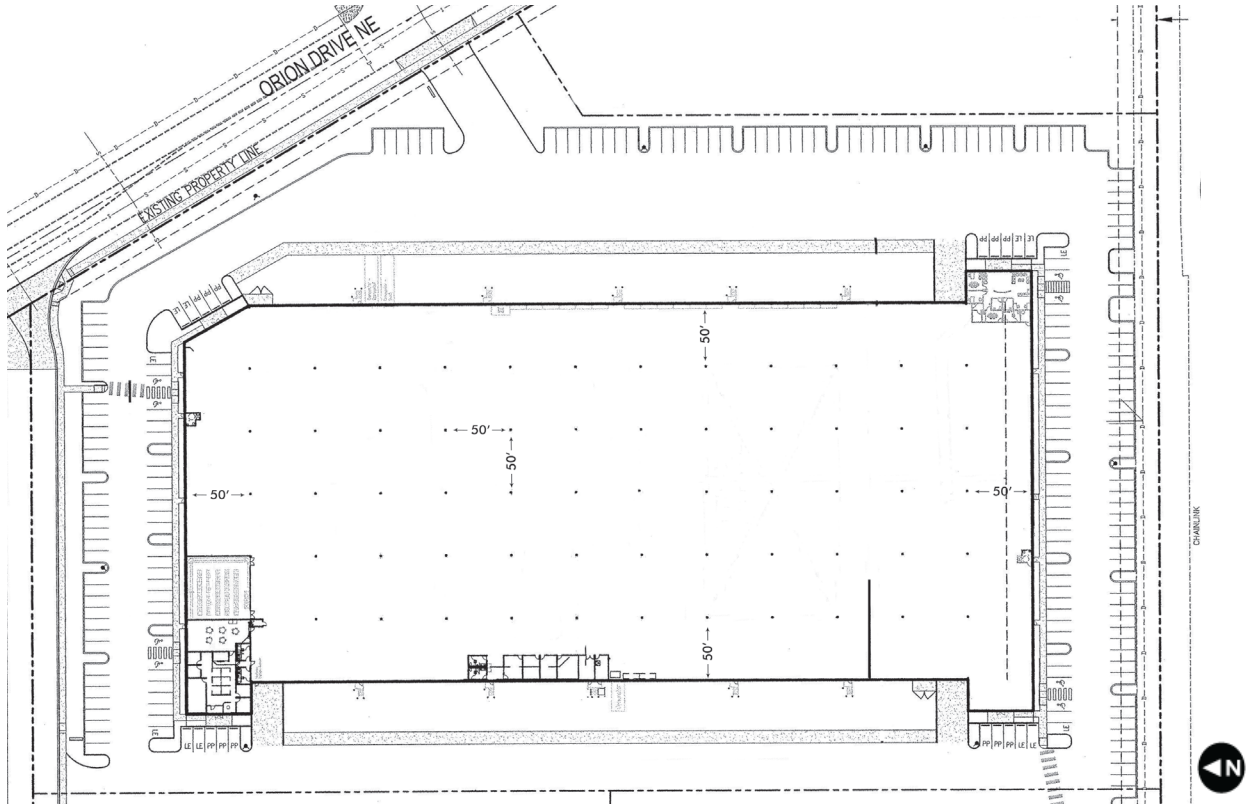
MONTE DECKER
253.596.0041
monte.decker@cbre.com

ANDREW HITCHCOCK
206.442.2719
andrew.hitchcock@cbre.com

CHRIS COWLES
253.596.0048
chris.cowles@cbre.com



MERIDIAN CAMPUS COPORATE PARK | BLDG F | 9225 POLARIS LANE NE | LACEY, WA 98516



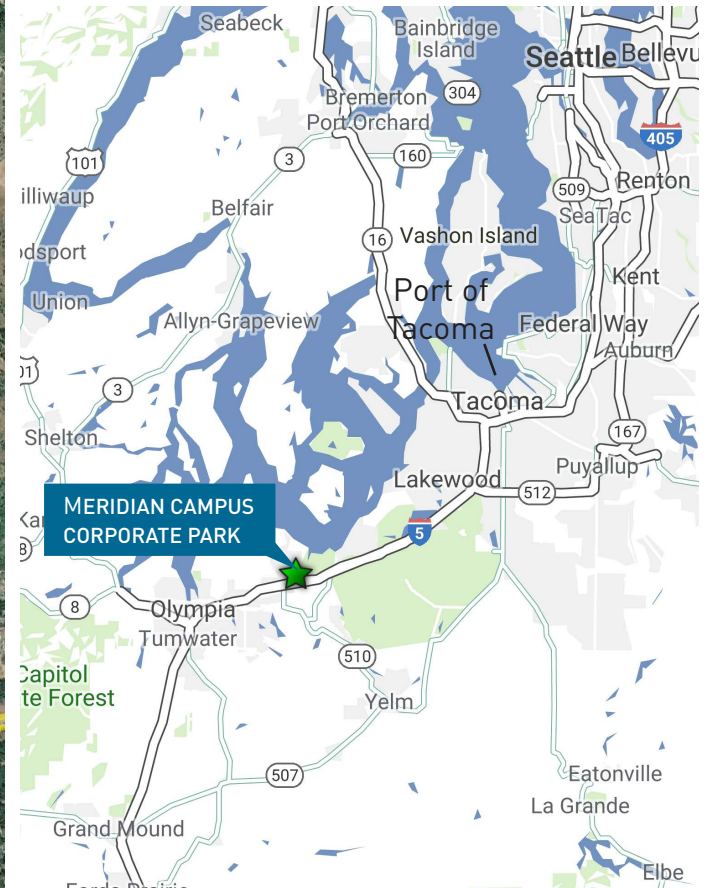
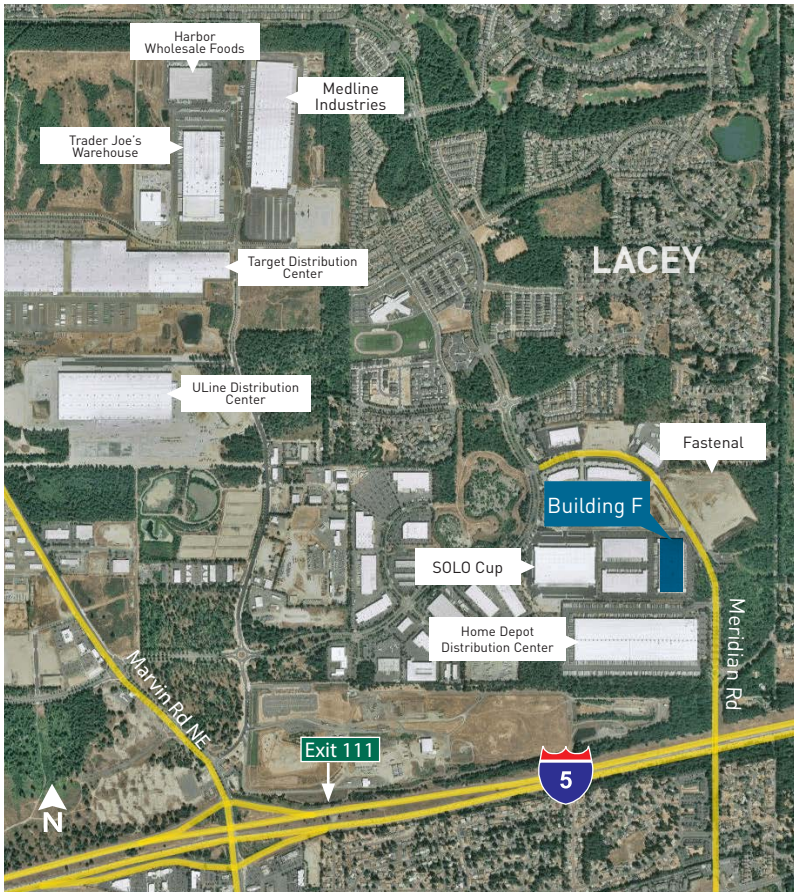
MONTE DECKER
253.596.0041
monte.decker@cbre.com

ANDREW HITCHCOCK
206.442.2719
andrew.hitchcock@cbre.com

CHRIS COWLES
253.596.0048
chris.cowles@cbre.com



MERIDIAN CAMPUS COPORATE PARK | BLDG F | 9225 POLARIS LANE NE | LACEY, WA 98516



1201 Pacific Avenue | Suite 1502 | Tacoma, WA 98402

© 2018 CBRE, Inc. This information has been obtained from sources believed reliable. We have not verified it and make no guarantee, warranty or representation about it. Any projections, opinions, assumptions or estimates used are for example only and do not represent the current or future performance of the property. You and your advisors should conduct a careful, independent investigation of the property to determine to your satisfaction the suitability of the property for your needs. CBRE and the CBRE logo are service marks of CBRE, Inc. and/or its affiliated or related companies in the United States and other countries. All other marks displayed on this document are the property of their respective owners. RB 05.30.19



MONTE DECKER
253.596.0041
monte.decker@cbre.com

ANDREW HITCHCOCK
206.442.2719
andrew.hitchcock@cbre.com

CHRIS COWLES
253.596.0048
chris.cowles@cbre.com

