

**OFFICE SPACE
FOR LEASE**

1255

**CORPORATE
CENTER
DRIVE**

MONTEREY PARK, CALIFORNIA

Charles Dunn

CHARLESDUNN.COM
LIC#0120141

OMNINET



FOR MORE INFORMATION, PLEASE CONTACT:

LINDA LEE
SENIOR MANAGING DIRECTOR
DIR: 818.550.8200 EXT.102
LICENSE #: 01278768
LINDALEE@CHARLESDUNN.COM

BILL BOYD
SENIOR MANAGING DIRECTOR
DIR: 818.550.8200 EXT.101
LICENSE #: 00816177
BBOYD@CHARLESDUNN.COM

SCOTT UNGER
MANAGING DIRECTOR
DIR: 818.550.8200 EXT.103
LICENSE #: 01855517
SUNGER@CHARLESDUNN.COM

Property Features

- › New ownership - Omnicore Capital
- › Class “A” office space
- › Large floor plates
- › 4/1,000 free parking
- › Corporate identity
- › Direct access to the 10, 710 and 60 freeways
- › Easy access to mass transit
- › Centrally located to numerous restaurants and retail amenities
- › Energy Star certified



Charles Dunn

CHARLESDUNN.COM



Amenities

- 1 Metro Link Station at Cal State LA
- 2 Wells Fargo
- 3 Cal State Los Angeles
- 4 Monterey Park Golf Club
- 5 Luminarias
- 6 Monterey Hill
- 7 Atlantic Times Square Shopping Center
- 8 AMC Theatres
- 9 LA Fitness
- 10 Monterey Park Mall
- 11 Comfort Inn
- 12 East West Bank
- 13 Monterey Park Hospital
- 14 Bank of America
- 15 IHOP
- 16 Panda Express
- 17 Starbucks
- 18 Ralphs
- 19 California Bank and Trust
- 20 Carrows Restaurant
- 21 The Coffee Bean
- 22 Denny's
- 23 Chipotle
- 24 LA County Sherriff's Department (HQ)



Charles Dunn





Charles Dunn



Availabilities

SUITE	RSF	RENTAL RATE	DESCRIPTION
216	1,003	\$2.75 per RSF per month FSG	Two window offices, one interior office and open work area. Contiguous with Suite 218 to 1,985 RSF.
218	982	\$2.75 per RSF per month FSG	Two window offices and open work area. Contiguous with Suite 216 to 1,985 RSF.



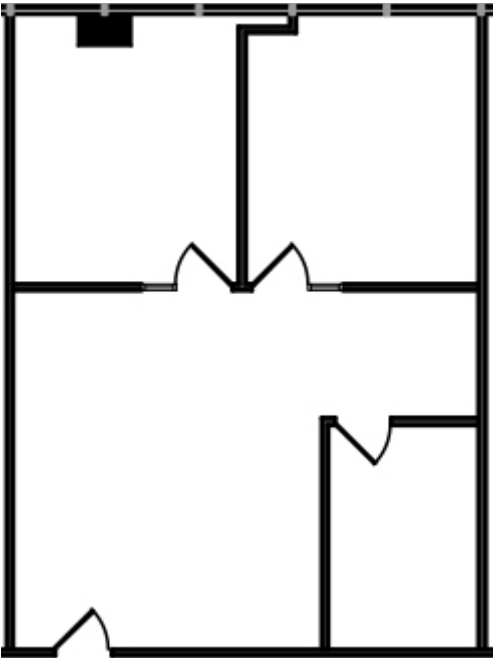
Charles Dunn



CHARLESDUNN.COM

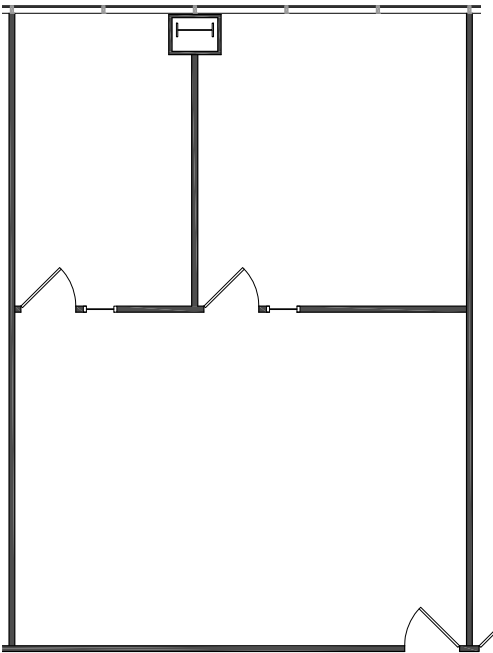
Floor Plan

Suite 216



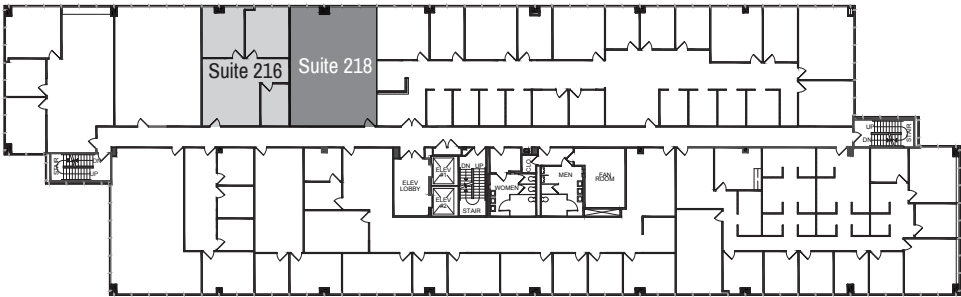
216	1,003 RSF	\$2.75 per RSF per month FSG
<ul style="list-style-type: none"> Two window offices, one interior office and open work area. Contiguous with Suite 218 to 1,985 RSF. 		

Suite 218



218	982 RSF	\$2.75 per RSF per month FSG
<ul style="list-style-type: none"> Two window offices and open work area. Contiguous with Suite 216 to 1,985 RSF. 		

Floor Location Key



1255

CORPORATE CENTER DRIVE

MONTEREY PARK, CALIFORNIA



FOR MORE INFORMATION, PLEASE CONTACT:

LINDA LEE
SENIOR MANAGING DIRECTOR
DIR: 818.550.8200 EXT.102
LICENSE #: 01278768
LINDALEE@CHARLESDUNN.COM

BILL BOYD
SENIOR MANAGING DIRECTOR
DIR: 818.550.8200 EXT.101
LICENSE #: 00816177
BBOYD@CHARLESDUNN.COM

SCOTT UNGER
MANAGING DIRECTOR
DIR: 818.550.8200 EXT.103
LICENSE #: 01855517
SUNGER@CHARLESDUNN.COM

Charles Dunn

CHARLESDUNN.COM
LIC#0120141

OMNINET

Charles Dunn Company, Inc. These materials are based on information and content provided by others which we believe are accurate. No guarantee, warranty or representation is made by the Charles Dunn Company or its personnel, and all interested parties must independently verify its accuracy and completeness. As well, any projections, assumptions, opinion, or estimates are used for example only and do not represent the current or future performance of the identified property. Your tax, financial, legal and toxic substance advisors should conduct a careful investigation of the property and its suitability for your needs, including land use limitations.