

FOR SUBLEASE  
**5660 VALMONT ROAD**

SUITE A  
BOULDER, CO 80301



**DRIVE TIME KEY:**

Downtown Boulder:	10 minutes
Downtown Louisville:	15 minutes
Downtown Denver:	35 minutes
Denver Int'l Airport:	45 minutes



**CONTACT US**

**SARAH-JOAN ROTHOLZ**

Associate  
303 264 1920  
sarahjoan.rotholz@cbre.com

**MARTY KNAPE**

First Vice President  
303 628 7498  
marty.knape@cbre.com

© 2020 CBRE, Inc. All rights reserved. This information has been obtained from sources believed reliable, but has not been verified for accuracy or completeness. You should conduct a careful, independent investigation of the property and verify all information. Any reliance on this information is solely at your own risk. CBRE and the CBRE logo are service marks of CBRE, Inc. All other marks displayed on this document are the property of their respective owners, and the use of such logos does not imply any affiliation with or endorsement of CBRE. Photos herein are the property of their respective owners. Use of these images without the express written consent of the owner is prohibited.

FOR SUBLEASE

**5660 VALMONT ROAD**

SUITE A  
Boulder, CO 80301

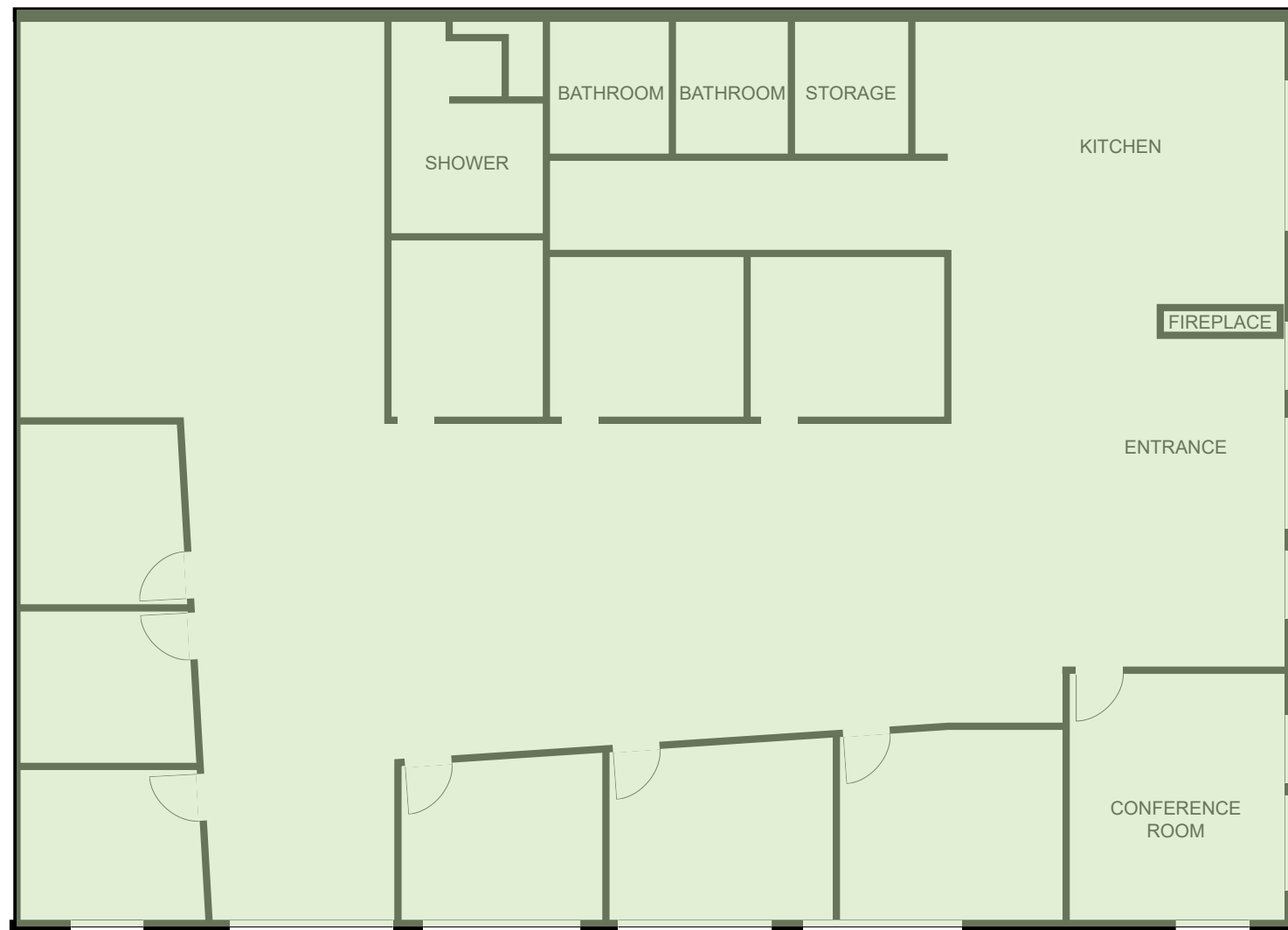


**SPACE HIGHLIGHTS**

3,546 of bright, modern office space available in East Boulder

- + Suite A: 3,546 SF
- + Term: Through October 31, 2021 (longer term available)
- + Rate: Negotiable
- + Operating Expenses: \$5.05/SF
- + Free onsite parking
- + Large full kitchen within space
- + Shower in suite
- + Lots of natural light
- + Mountain views
- + High exposed ceilings
- + Modern space with open layout
- + Ideal for start ups, tech and creative tenants

 **FLOOR PLAN**



 **SPACE PHOTOS**

