

215 Historic Route 66



215 HISTORIC ROUTE 66, WAYNESVILLE, MO 65583

COVER PAGE

For Sale



For more information please contact:

David Havens

Senior Broker

417.877.7900 x101

dhavens@jaredcommercial.com

2870 S Ingram Mill Rd | Springfield, MO 65804 | 417.877.7900 | Fax: 417.877.7689 | www.jaredcommercial.com



215 Historic Route 66



215 HISTORIC ROUTE 66, WAYNESVILLE, MO 65583

EXECUTIVE SUMMARY

For Sale



PROPERTY OVERVIEW

Property is ideally located on Old Route 66 Downtown Waynesville. Easy access, room for large parking lot, and great visibility. Zoned Commercial. Ideal for Retail, office, or Boutique Hotel.

PROPERTY HIGHLIGHTS

- Great Visibility.
- Easy Access.
- Located on Historic Route 66.
- Corner Lot.
- Located in Downtown Waynesville, MO.

PROPERTY SUMMARY

Sale Price:	\$250,000
Lot Size:	1.41 Acres
APN #:	
Zoning:	Commercial
Market:	Waynesville, MO
Cross Streets:	Old Route 66

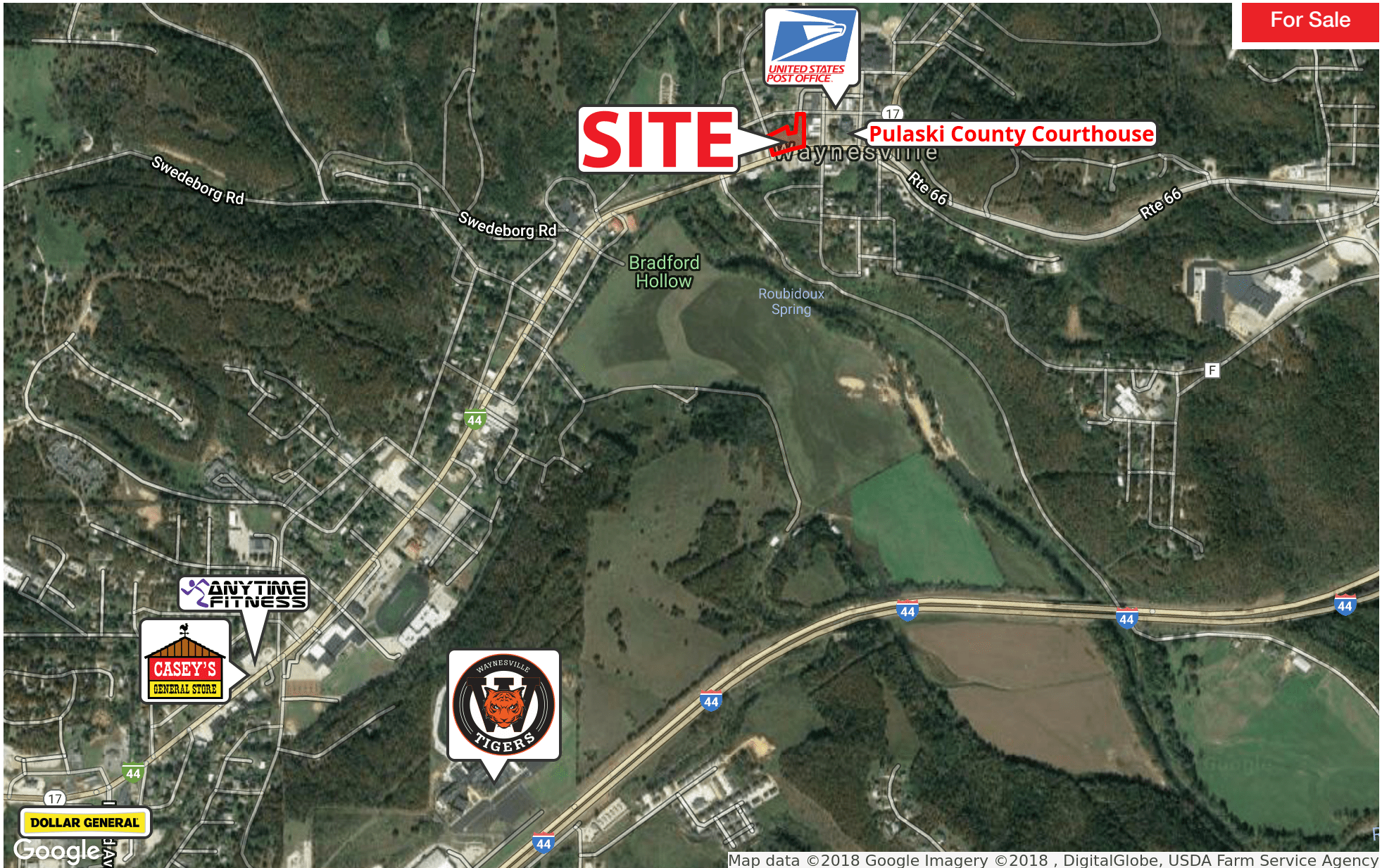
215 Historic Route 66



215 HISTORIC ROUTE 66, WAYNESVILLE, MO 65583

RETAILER MAP

For Sale



Map data ©2018 Google Imagery ©2018 , DigitalGlobe, USDA Farm Service Agency

2870 S Ingram Mill Rd | Springfield, MO 65804 | 417.877.7900 | Fax: 417.877.7689 | www.jaredcommercial.com

The information listed above has been obtained from sources we believe to be reliable, however, we accept no responsibility for its correctness.



215 Historic Route 66



215 HISTORIC ROUTE 66, WAYNESVILLE, MO 65583

LOCATION MAPS

For Sale



POPULATION	1 MILE	5 MILES	10 MILES
TOTAL POPULATION	601	14,220	43,709
MEDIAN AGE	33.4	31.4	29.3
MEDIAN AGE (MALE)	32.4	30.2	28.3
MEDIAN AGE (FEMALE)	34.8	32.9	29.7
HOUSEHOLDS & INCOME	1 MILE	5 MILES	10 MILES
TOTAL HOUSEHOLDS	233	5,190	13,287
# OF PERSONS PER HH	2.6	2.7	3.3
AVERAGE HH INCOME	\$56,507	\$54,993	\$51,898
AVERAGE HOUSE VALUE		\$145,194	\$137,656

PROPERTY HIGHLIGHTS

- Great Visibility.
- Easy Access.
- Located on Historic Route 66.
- Corner Lot.
- Located in Downtown Waynesville, MO.

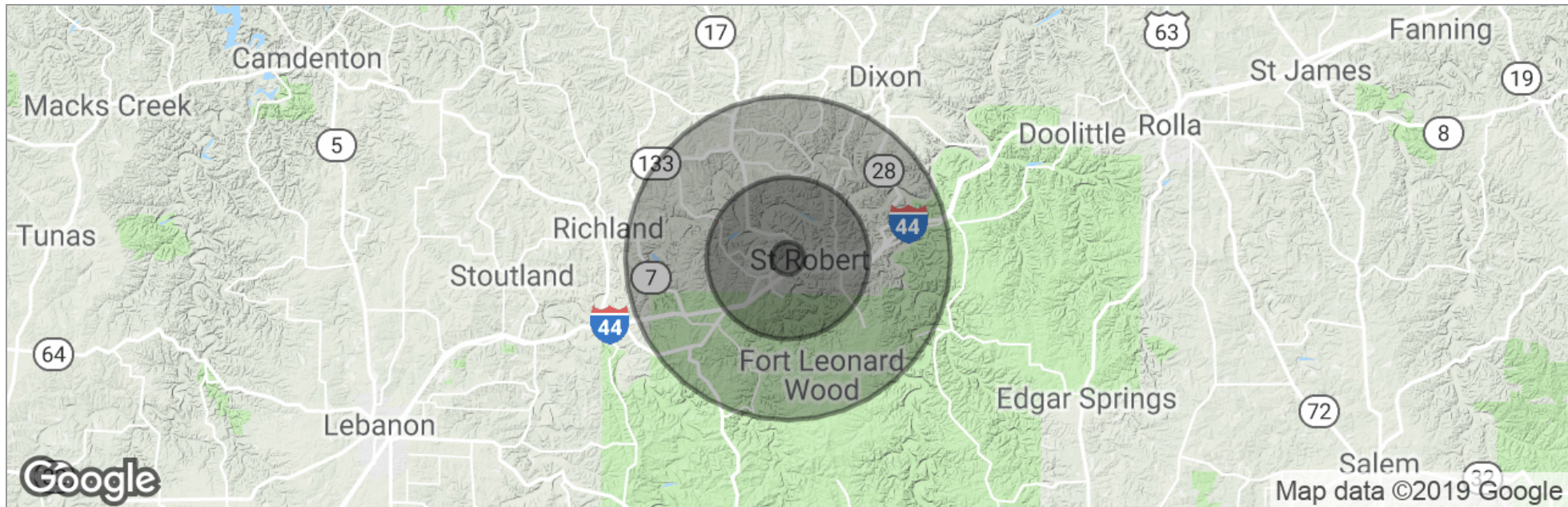
215 Historic Route 66



215 HISTORIC ROUTE 66, WAYNESVILLE, MO 65583

DEMOGRAPHICS MAP

For Sale



	1 Mile	5 Miles	10 Miles
Total Population	601	14,220	43,709
Population Density	191	181	139
Median Age	33.4	31.4	29.3
Median Age (Male)	32.4	30.2	28.3
Median Age (Female)	34.8	32.9	29.7
Total Households	233	5,190	13,287
# of Persons Per HH	2.6	2.7	3.3
Average HH Income	\$56,507	\$54,993	\$51,898
Average House Value		\$145,194	\$137,656

* Demographic data derived from 2010 US Census

2870 S Ingram Mill Rd | Springfield, MO 65804 | 417.877.7900 | Fax: 417.877.7689 | www.jaredcommercial.com

The information listed above has been obtained from sources we believe to be reliable, however, we accept no responsibility for its correctness.



215 Historic Route 66



215 HISTORIC ROUTE 66, WAYNESVILLE, MO 65583

CONTACT

For Sale

DAVID HAVENS Senior Broker



2870 S Ingram Mill Rd
Springfield, MO 65804

T 417.877.7900 x101
C 417.350.4771
dhavens@jaredcommercial.com
MO #2015037234

Memberships & Affiliations

CCIM, ICSC, NAR, MAR.

Education

Bachelors Degree in Business Administration from University of Northern Colorado.
Entrepreneurship Certificate from University of Northern Colorado
CCIM Candidate
Missouri and Colorado Real Estate License
Business Brokerage Certificate- VR