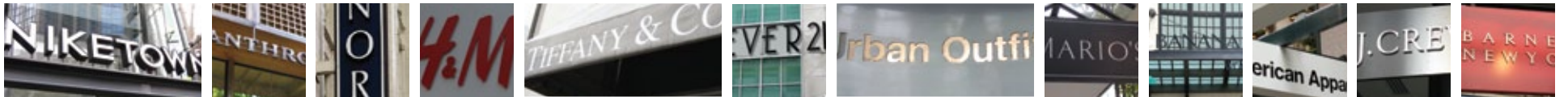
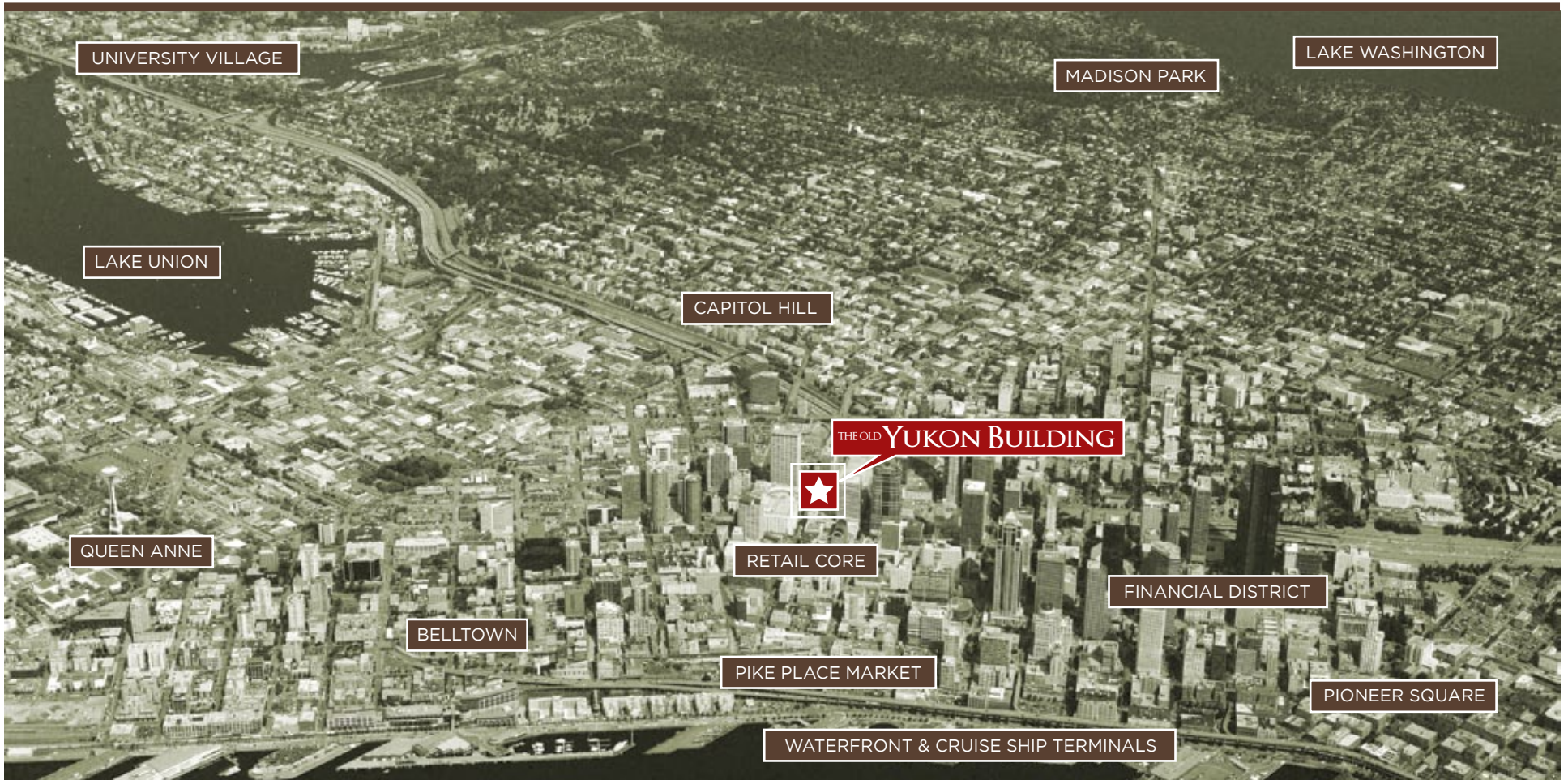


THE OLD YUKON BUILDING

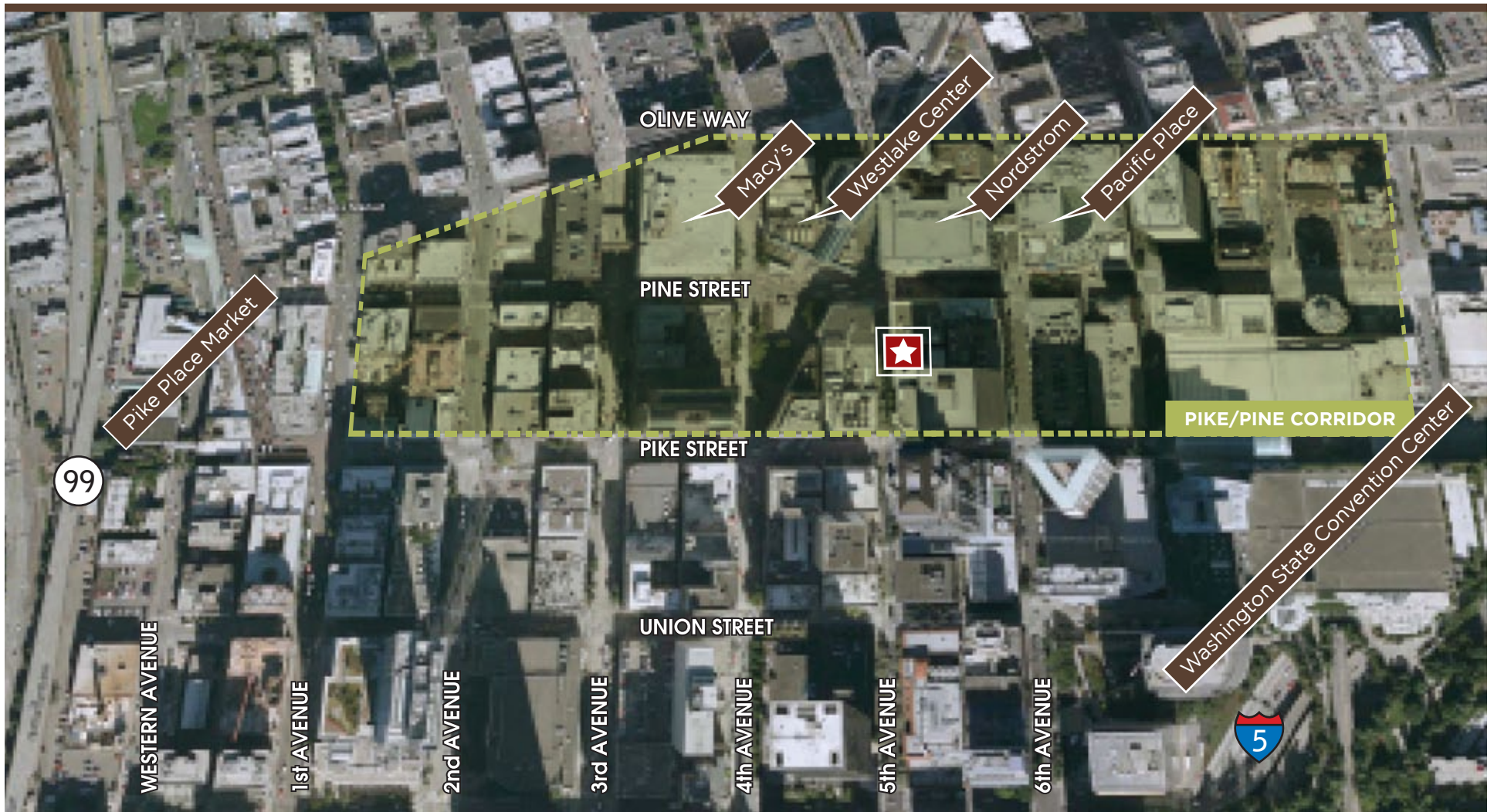


1522 5TH AVENUE | SEATTLE, WASHINGTON

Downtown Seattle is the central, driving force for the vitality of the city, state and region. It is among the top international centers for commerce, development and culture. With a growing global health and philanthropic community, 29 parks, a focus on environmental sustainability, state-of-the-art venues for conventions, professional sports, art and cultural events and a variety of retail and dining options, Downtown Seattle draws a diverse cross section of workers and visitors from around the globe to experience this one-of-a-kind urban setting. The Old Yukon Building is positioned at the heart of this urban core and at the crossroads of Seattle's main shopping, cultural, financial and entertainment districts. The world-renowned Pike Place Market, Benaroya Symphony Hall, The Paramount Theater, The Fifth Avenue Theater, Seattle Art Museum, Pacific Place, The Washington State Convention Center, and over 4,000 hotel rooms are all located within a three block walk of the site.



Consisting of 24 blocks of retail containing more than 1.5 million square feet, Seattle's downtown core has one of the lowest retail vacancy rates in the country. The Old Yukon Building is located between the Washington State Convention Center and Pacific Place in the Pike/Pine Corridor, Seattle's premier shopping area. Providing unmatched access to the downtown shopper, The Old Yukon Building's immediate neighbors include Nordstrom's Flagship store, Macy's, Barney's, the Forever 21 Northwest Flagship store, Anthropologie, Sephora, Urban Outfitters and H&M.



- ### PACIFIC PLACE
- a pea in the pod, designer boutique
 - AMC Pacific Place 11
 - Ann Taylor
 - at&t
 - Aveda
 - Barnes & Noble
 - Barneys New York
 - BCBGMAXAZRIA
 - bebe
 - Benetton
 - Bose
 - Brookstone
 - Cartier
 - Chico's
 - Club Monaco
 - Coach
 - Eddie Bauer
 - Express
 - GameStop
 - Gordon Biersch
 - Brewery Restaurant
 - Gymboree
 - Helly Hansen
 - Il Fornaio Restaurant and Bakery
 - J. Crew
 - Johnny Rockets
 - L'Occitane
 - lululemon athletica
 - MaxMara
 - Mexico O & Co.
 - Papyrus
 - Pike Place Chowder
 - Red Mango
 - Restoration Hardware
 - Seahawks/Sounders FC Pro Shop
 - Seven
 - Sixth Avenue Wine Seller
 - Solstice Sunglass Boutique
 - Something Silver
 - Starbucks Coffee
 - Thai Ginger
 - The Body Shop
 - Tiffany & Co.
 - True Religion
 - Today
 - Twist
 - Victoria's Secret
 - Washington Mutual Bank
 - White House|Black Market
 - Williams-Sonoma Grande Cuisine

- ### WESTLAKE CENTER
- Bad Reputation
 - Bag It Boutique
 - Bene Fashion
 - Bobachine
 - Bombay Wala
 - Boss Wear
 - Bronco BBQ
 - Cache
 - Cajun & Grill
 - Candy Tyme
 - Cascade Florists
 - Charley's Grilled Subs
 - Claire's
 - ClearWire
 - CMS Hawaiian Jewelry
 - Cultures the Gift Shop
 - DAISO
 - Dilettante Mocha Café
 - Emerald City Smoothie
 - Fireworks
 - Foot Locker
 - Fossil
 - FYE
 - Gamestop
 - Georgio's
 - Godiva Chocolatier
 - Hot Topic
 - Jessica McClintock
 - LensCrafters
 - Lotus Express
 - LUSH
 - Made in Washington
 - McDonald's
 - McKinley's Soup Plus
 - Mediterranean Avenue
 - Metro Tailoring
 - Millennium Wireless
 - Millstream
 - Mobatta
 - Motherhood Maternity
 - Mrs. Fields Cookies
 - Nine West
 - Noodle Zone
 - NYS Collection
 - P.F. Chang's China Bistro
 - Romy Boutique
 - Rosetta Stone
 - Runway Boutique
 - Salena Mexicana
 - Sarku-Japanese Sushi
 - Sbarro
 - Silver Works
 - Snap! Custom Clothing
 - Sprint
 - Starbucks Coffee
 - Starbucks Coffee - Plaza
 - Sunglass Hut
 - Talbots
 - Tall Girl
 - Teriyaki Temple
 - Thai Go
 - The Children's Place
 - Ticketmaster at FYE
 - Trade Secret
 - Travelex Foreign Currency Exchange
 - Tully's Coffee
 - Verizon / Wireless Retailers
 - Washington State Connections
 - Windspinners
 - World Wrapps





SEATTLE HIGHLIGHTS

There were 244,759 employees in Center City Seattle in 2008. This figure represents 49% of all of the employees in the City of Seattle and 25% of those in King County.

Many of the region's largest public facilities are located in Center City including: Qwest Field, Safeco Field, Seattle Center Key Arena, Seattle Art Museum, Olympic Sculpture Park, Seattle Aquarium, Experience Music Project and Science Fiction Museum, Benaroya Hall, 5th Avenue Theatre, Paramount Theatre, McCaw Hall, Washington State Convention & Trade Center and Seattle Central Public Library.

Center City has 4,917 street-level shops, restaurants and service businesses in operation.

With 57,370 estimated residents in 2009, the Center City population has grown by 68% since 1990, compared to 17% citywide growth during the same period.

Center City Seattle had more than 25 million tourists, entertainment seekers, conventioners and sporting event attendees, making it the most active, visible and heavily used part of the city.

The cruise industry, based in Center City, was responsible for 3,781 jobs in the region, \$312.5 million in business revenue and \$16.1 million in state and local taxes in 2009.

RETAIL LEASING INFORMATION

REALRETAIL

Maria Royer
206.264.0630 office
206.619.0131 mobile
mroyer@real-retail.net