

# FOR LEASE

3851 - 3985 W HAMLIN ROAD  
ROCHESTER HILLS, MICHIGAN 48326



**HIGH-TECH OFFICE & RESEARCH FACILITY | UP TO ±53,871 SF AVAILABLE**

## PROPERTY FEATURES INCLUDE

- Ideal Corporate Headquarters located in the heart of the Auburn Hills Automotive groups
- Highway signage available with visibility on M-59
- High-Tech Office and Research facility with open floorplates
- 20' clear height in high-tech lab and shop areas
- 4 overhead doors in place with knockout panels for 2 truckwells in shop areas
- Fenced and secured parking area with 17 spaces
- 3.6/1000 parking ratio
- Quick and easy access to I-75 and M-59
- Corporate Neighbors: Volkswagen, Comerica, Chrysler, BorgWarner, FANUC, and many more
- Zoned T&R (Technology & Research) for maximum flexibility



**FOR MORE INFORMATION PLEASE CALL:**

**ROBERT GAGNIUK** robert.gagniuk@freg.com

**GREGG KENT** greggory.kent@freg.com

**248.324.2000 OFFICE ECODE 343 & 492**

We have no reason to doubt the accuracy of information contained herein, but we cannot guarantee it. All information should be verified prior to purchase and/or lease.



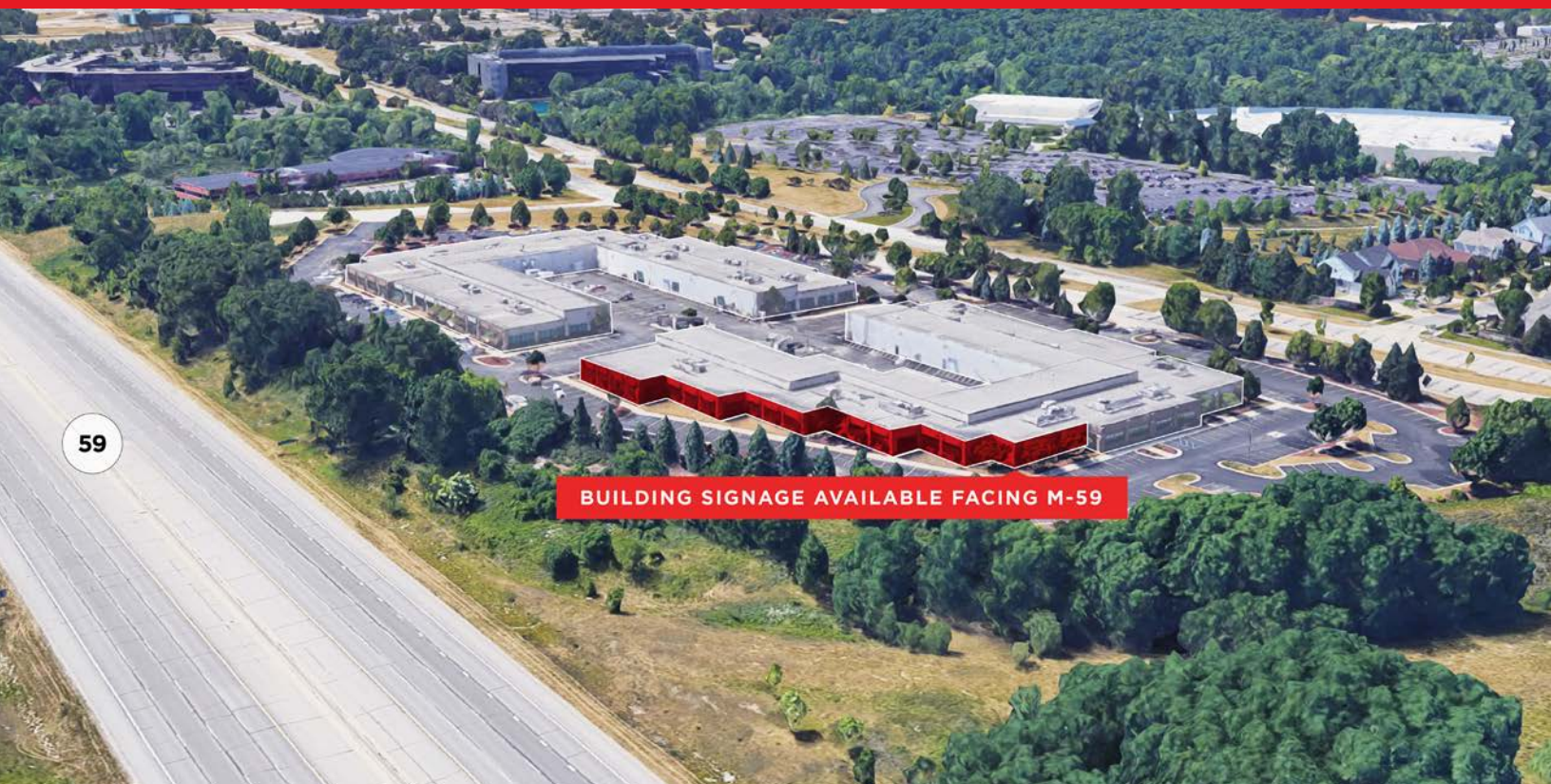


**FOR LEASE**

3851 - 3985 W HAMLIN ROAD  
ROCHESTER HILLS, MICHIGAN 48326



**PROMINENT BUILDING SIGNAGE ALONG M-59 | ±92,500 CARS PER DAY**





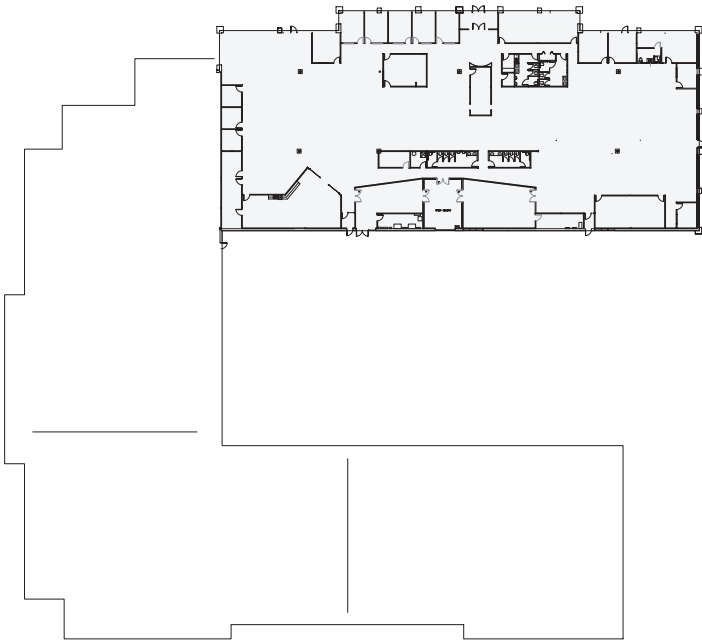
# FOR LEASE

3851 - 3985 W HAMLIN ROAD  
ROCHESTER HILLS, MICHIGAN 48326

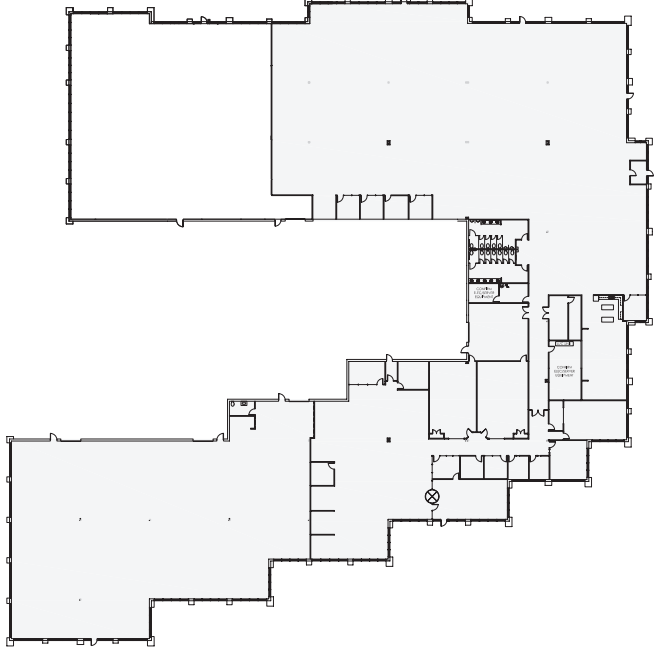


IDEAL CORPORATE HEADQUARTERS LOCATED IN THE HEART OF THE AUBURN HILLS AUTOMOTIVE GROUPS

AVAILABLE - #3903  
25,436 SF



AVAILABLE - #3851  
39,667 SF



AVAILABLE - #3851  
SHOP SPACE  
14,204 SF