

\$90,000 ROOF REPLACEMENT CREDIT @ CLOSING!



HIGHLIGHTS

- » Former Parish Offices and Dormitory
- » Two Connected Buildings 23,751 SF with 6,019 SF Basement for a Total of 29,770 SF
- » Zoned RP-5 Planned Apartment District
- » Brick on Masonry Construction
- » Located by City View at St. Margarets, a 111 Unit 55 and Better Affordable Housing Community
- » St. Margaret's Park, a 10+ Acres Park, is Located Within Walking Distance of the Property
- » Great Opportunity for Redevelopment

MAJOR PRICE REDUCTION

\$465,000

DEMOGRAPHICS

	1 Mile	3 Mile	5 Mile
2018 POPULATION	13,569	74,517	203,085
2018 MEDHOUSEHOLD INCOME	\$33,891	\$37,284	\$40,478

Marty Gilchrist, CCIM, SIOR

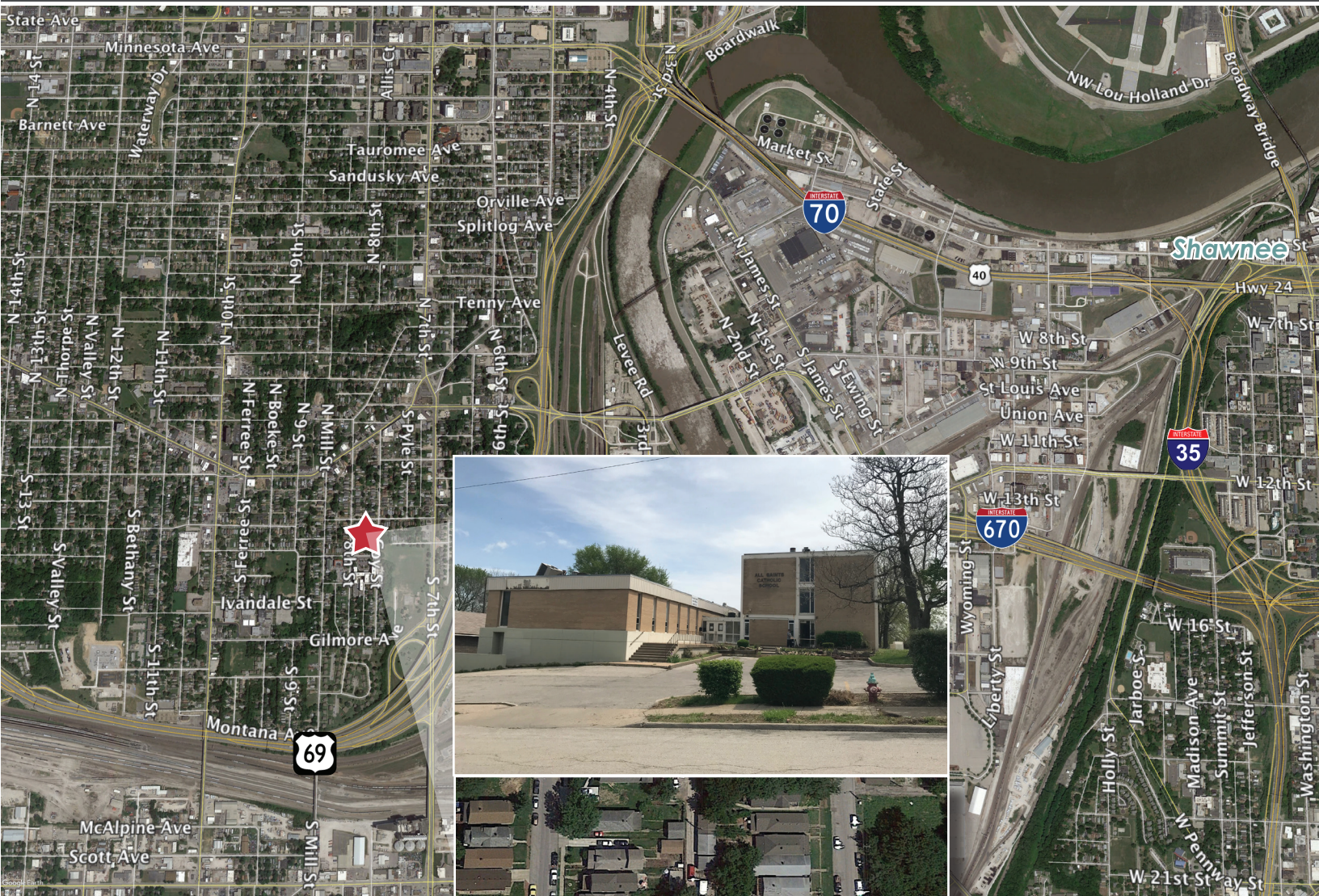
Office: (913) 945-3707
Mobile: (316) 393-0703
Email: martyg@reececommercial.com

Bob Crow

Office: (913) 945-3783
Mobile: (913) 620-2482
Email: bob@reececommercial.com

PHOTOS & AERIALS

229 S 8TH ST & 226 S COY, KANSAS CITY, KS 66101



Marty Gilchrist, CCIM, SIOR

Office: (913) 945-3707

Mobile: (316) 393-0703

Email: martyg@reececommercial.com

Bob Crow

Office: (913) 945-3783

Mobile: (913) 620-2482

Email: bob@reececommercial.com