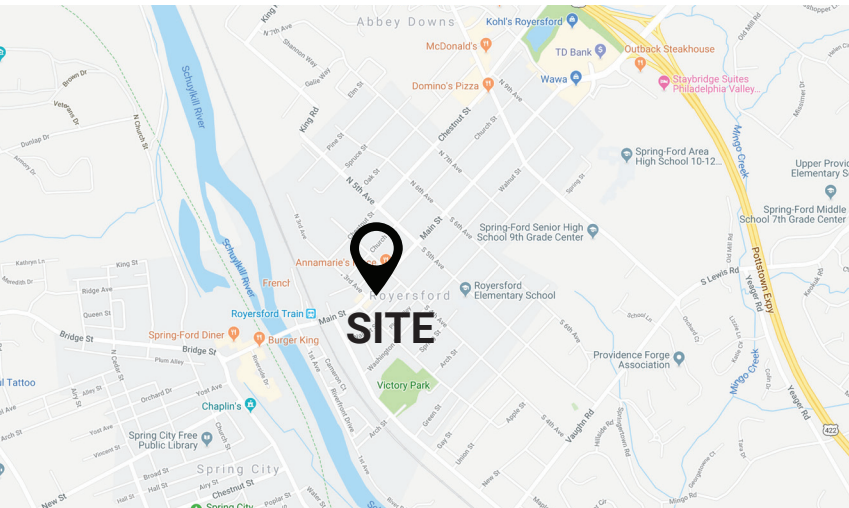


± 1,784 - 5,090 SF SPACE AVAILABLE
330 - 338 Main Street | Royersford, PA 19468

**FOR LEASE:
PRICE NEGOTIABLE**

PROPERTY FEATURES

- ✓ ± 1,784 - 5,090 SF Space Available For Lease
- ✓ Ideal for breweries, restaurants, fitness, salons and banks, as the property is located in a Community Re-investment Act eligible tract
- ✓ Rare abundance of off-street parking with over 130 free spaces attached to and directly behind this property in addition to ample on-street parking
- ✓ Strong Traffic Counts: Main Street - 16,924 VPD
- ✓ Direct access to the Schuylkill River Trail providing a nice traffic driver of recreational activity



CONTACT US

JAMES PINCKNEY

Phone: 610.359.1100

Cell: 610.453.2569

Email: jpinckney@zmcre.com

TESS SCOTT

Phone: 610.359.1100

Cell: 610.401.3453

Email: tscott@zmcre.com

1306 Wilmington Pike, Suite A-2

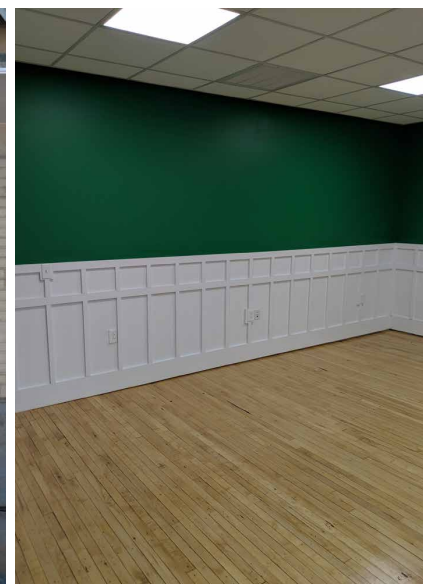
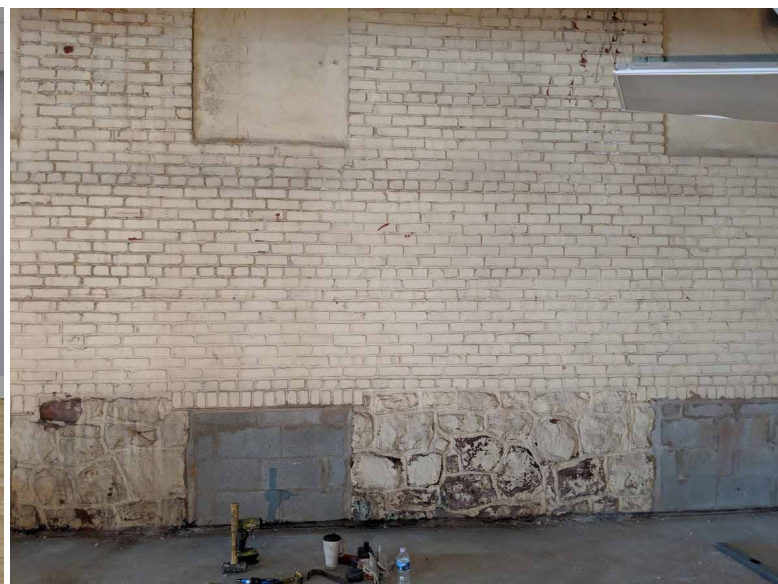
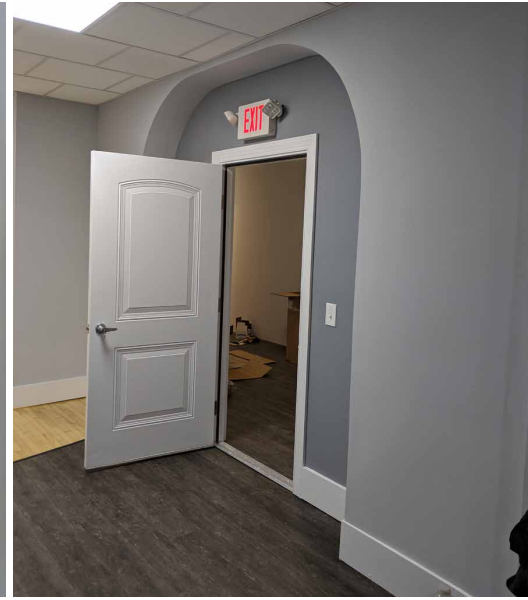
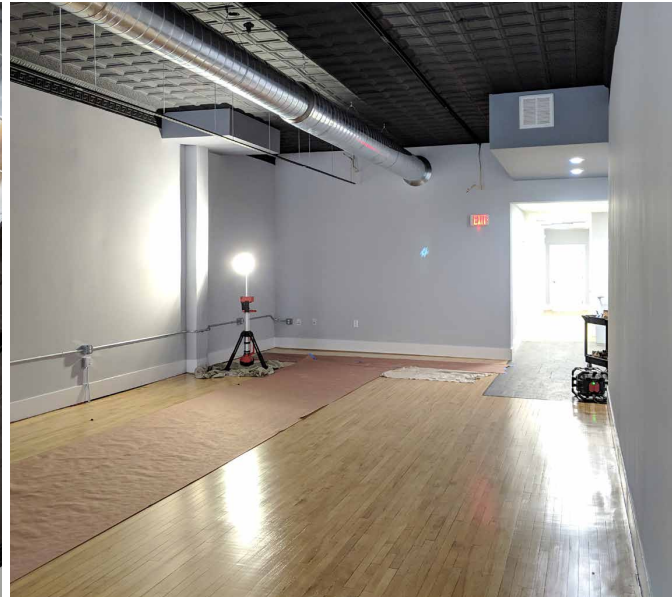
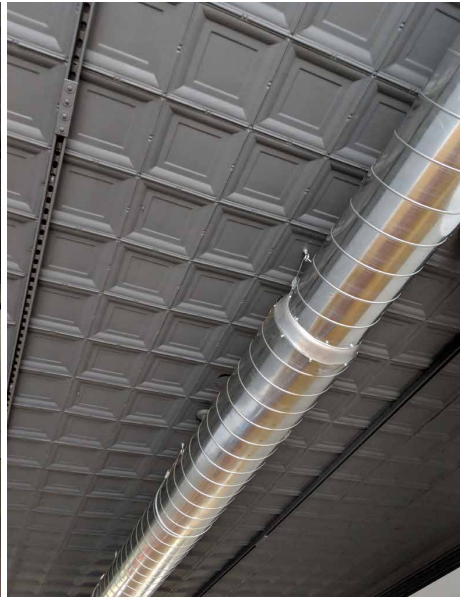
West Chester, PA 19382

610.359.1100

www.zmcre.com


ZOMMICK MCMAHON
COMMERCIAL REAL ESTATE

ROYERSFORD INTERIOR PHOTOS: 330-338 MAIN STREET




ZOMMICK MCMAHON
COMMERCIAL REAL ESTATE

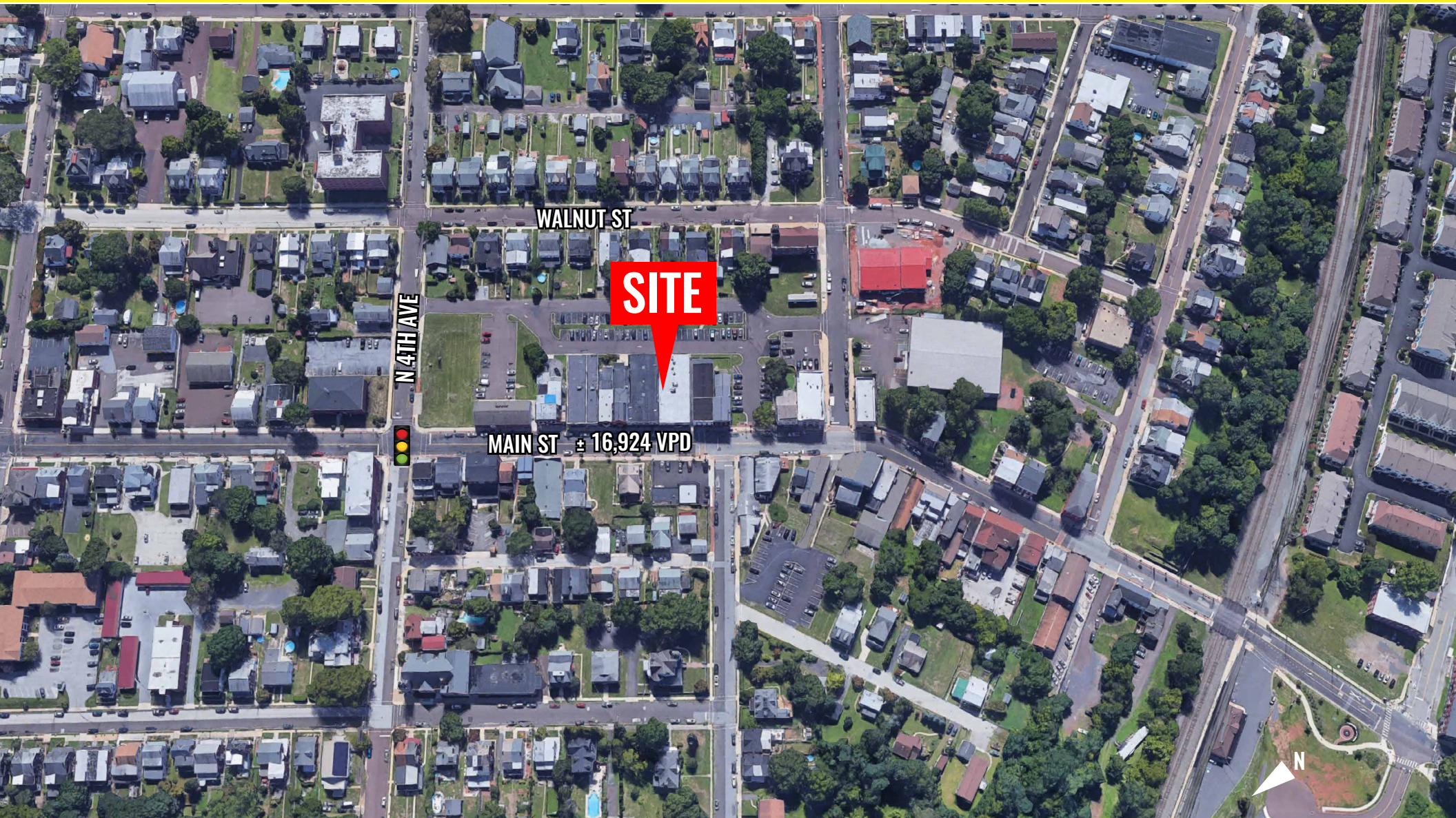
CONTACT US

JAMES PINCKNEY
Phone: 610.359.1100
Cell: 610.453.2569
Email: jpinckney@zmcre.com

TESS SCOTT
Phone: 610.359.1100
Cell: 610.401.3453
Email: tscott@zmcre.com

1306 Wilmington Pike, Suite A-2
West Chester, PA 19382
610.359.1100
www.zmcre.com

ROYERSFORD SITE LOCATION AERIAL: 330 - 338 MAIN STREET



CONTACT US

JAMES PINCKNEY

Phone: 610.359.1100

Cell: 610.453.2569

Email: jpinckney@zmcre.com

TESS SCOTT

Phone: 610.359.1100

Cell: 610.401.3453

Email: tscott@zmcre.com

1306 Wilmington Pike, Suite A-2

West Chester, PA 19382

610.359.1100

www.zmcre.com

ROYERSFORD RETAIL MARKET AERIAL: 330 - 338 MAIN STREET



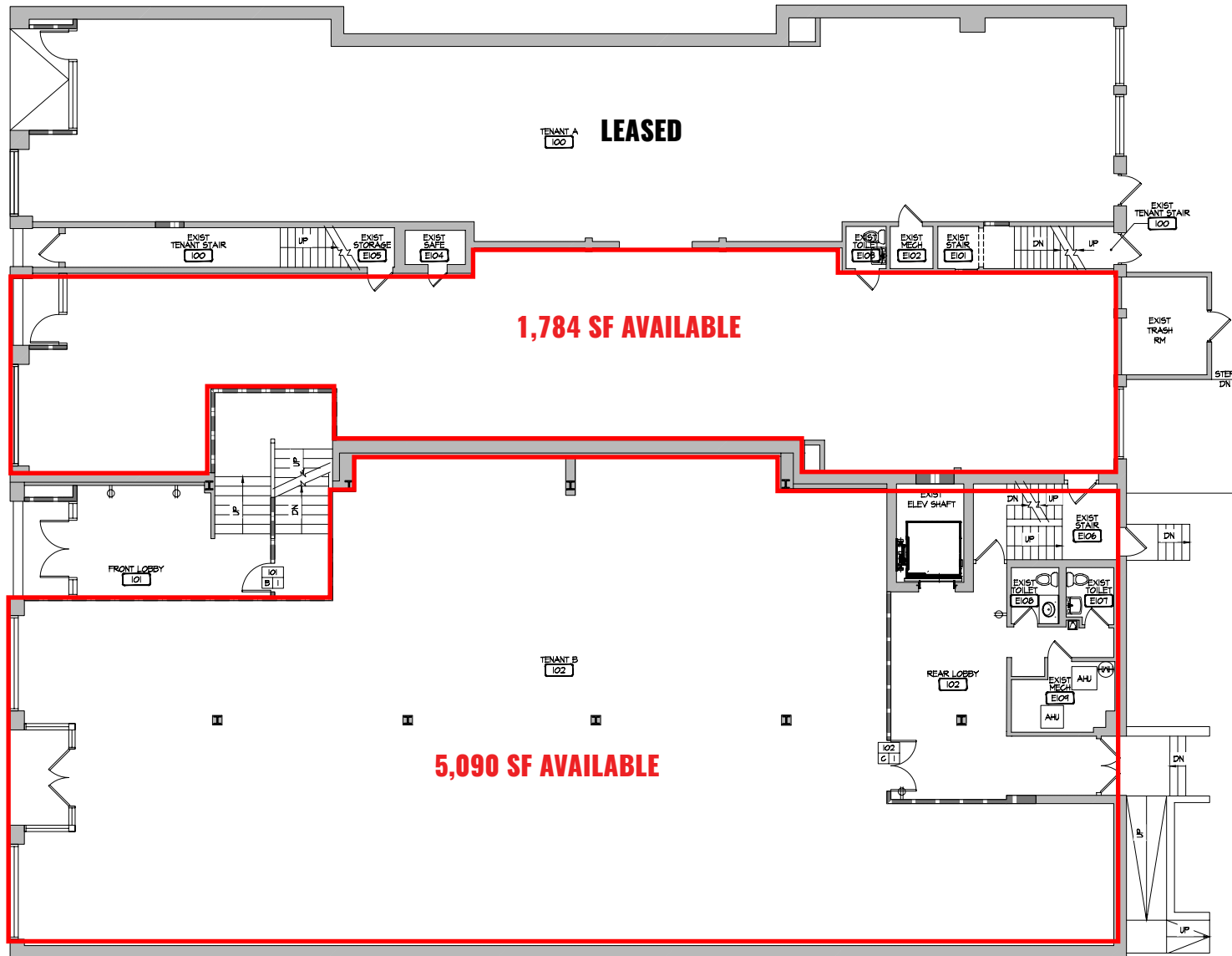
CONTACT US

JAMES PINCKNEY
Phone: 610.359.1100
Cell: 610.453.2569
Email: jpinckney@zmcre.com

TESS SCOTT
Phone: 610.359.1100
Cell: 610.401.3453
Email: tscott@zmcre.com

1306 Wilmington Pike, Suite A-2
West Chester, PA 19382
610.359.1100
www.zmcre.com

ROYERSFORD SITE PLAN: 330 - 338 MAIN STREET



CONTACT US

JAMES PINCKNEY
Phone: 610.359.1100
Cell: 610.453.2569
Email: jpinckney@zmcre.com

TESS SCOTT
Phone: 610.359.1100
Cell: 610.401.3453
Email: tscott@zmcre.com

1306 Wilmington Pike, Suite A-2
West Chester, PA 19382
610.359.1100
www.zmcre.com

ABOUT ZOMMICK McMAHON COMMERCIAL REAL ESTATE

Zommick McMahon Commercial Real Estate, Inc. has been a Metro Philadelphia Area staple since its inception in 1949. The Company was founded by Joseph Zommick, and continues today with Ryan McMahon and his highly experienced staff, whom are all results-oriented professionals.

SOME OF OUR SATISFIED CLIENTS:

**ROYAL
FARMS**



Walgreens

WSFS bank
We Stand For Service

Regency
Centers.



Wawa

Bank of America®



IRON HILL
BREWERY & RESTAURANT

**DUNKIN'
DONUTS**



Express
EMPLOYMENT PROFESSIONALS


ZOMMICK McMAHON
COMMERCIAL REAL ESTATE

CONTACT US

JAMES PINCKNEY

Phone: 610.359.1100
Cell: 610.453.2569
Email: jpinckney@zmcre.com

TESS SCOTT

Phone: 610.359.1100
Cell: 610.401.3453
Email: tscott@zmcre.com

1306 Wilmington Pike, Suite A-2
West Chester, PA 19382
610.359.1100
www.zmcre.com