

Mixed Use Land For Sale



Hawthorne Avenue Land

606 S. Hawthorne Ave. | Apopka, FL 32703

- Zoned MU-ES-GT: Mixed Use East Shore - Gateway Sub-District
- Income producing stand-alone warehouse (currently leased)
- Sub-District allows for various residential uses (including assisted living), retail and other commercial use
- Located 1 Mile West of planned Apopka Town Center Development

ALEX ROWLINSON
407-691-0505
arowlinson@holdthyssen.com

301 S. New York Avenue
Suite 200
Winter Park, FL 32789

www.holdthyssen.com



7.68 Acres



Zoned MU-ES-GT



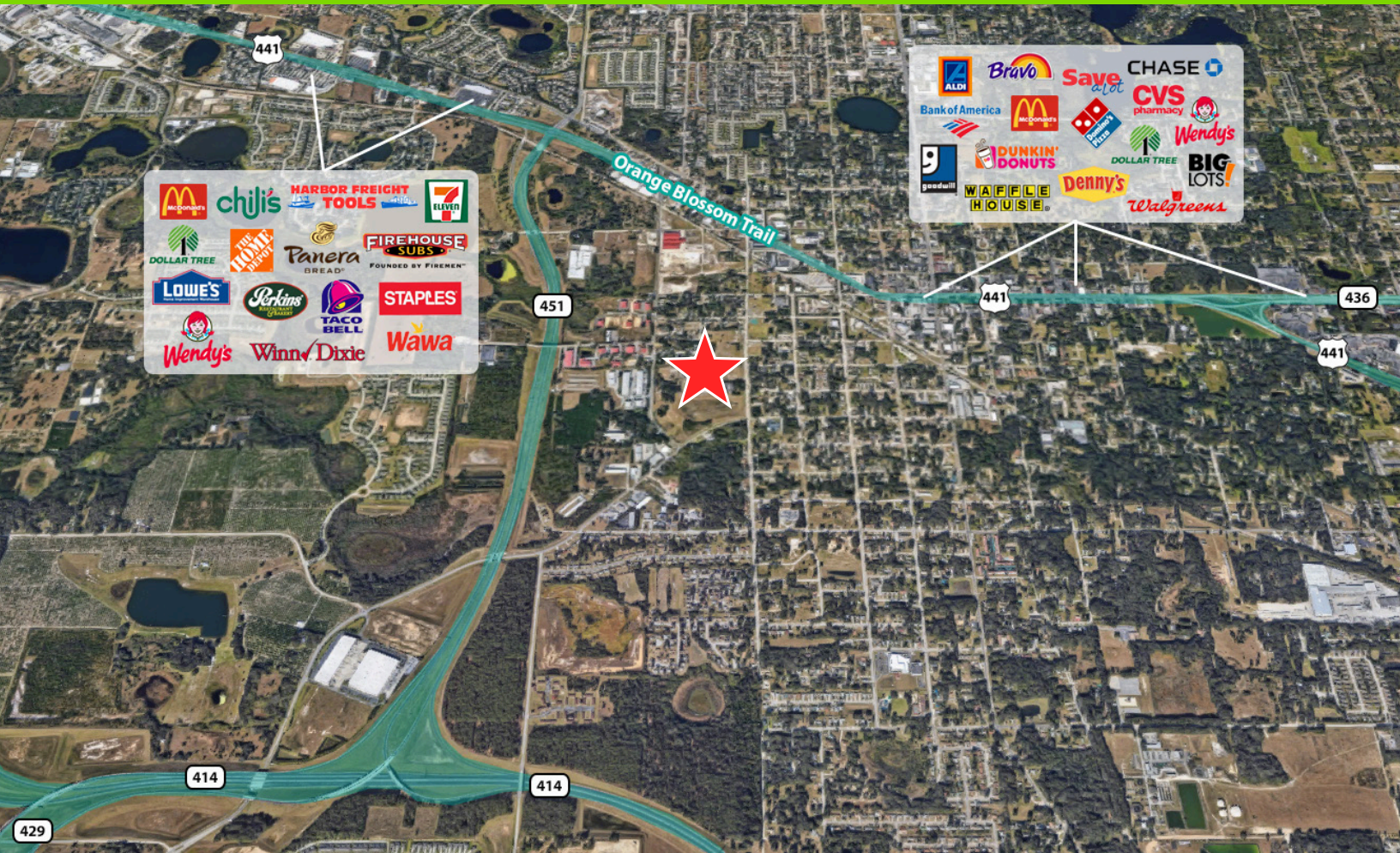
**Great Builder/
Developer Opportunity**



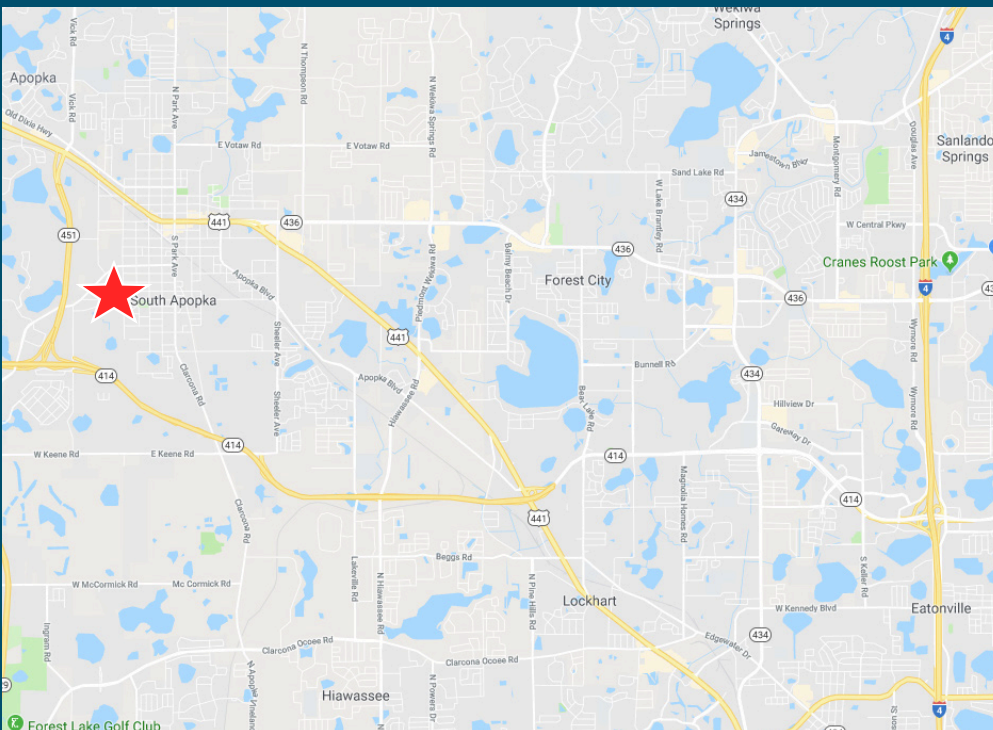
**Within 1 Mile of
Planned Apopka Town
Center Development**



\$999,000



LOCATION



FOR MORE INFORMATION:

ALEX ROWLINSON
 arowlinson@holdthysen.com
 T: 407-691-0505

301 S. New York Avenue
 Suite 200
 Winter Park, FL 32792



The information above has been obtained from sources believed reliable. While we do not doubt its accuracy we make no guarantee, warranty or representation about it. It is your responsibility to independently confirm its accuracy and completeness. Any projections, opinions, assumptions, or estimates used are for example only and do not represent the current or future performance of the property. Hold-Thyssen, Inc. is a licensed real estate broker.