



14TH STREET NW & CORCORAN STREET NW

# 1618

14TH STREET NW

1,300- 4,073 SF

## BUILDING FOR LEASE

### PROPERTY HIGHLIGHTS

14TH STREET CORRIDOR

1618 14TH ST NW  
WASHINGTON, DC 20009

1,300- 4,073 SF  
TOTAL RETAIL

### NEAR BY RETAILERS

Room&Board west elm



TRADER JOE'S

PARACHUTE



SHINOLA sweetgreen



Marine Layer

jenis

### PROUDLY REPRESENTED BY

**GARY TAUBIN**

+1 240 447 9707

Gary.Taubin@cbre.com

**DELIVERY:** Immediate

**RENT:** Available upon request

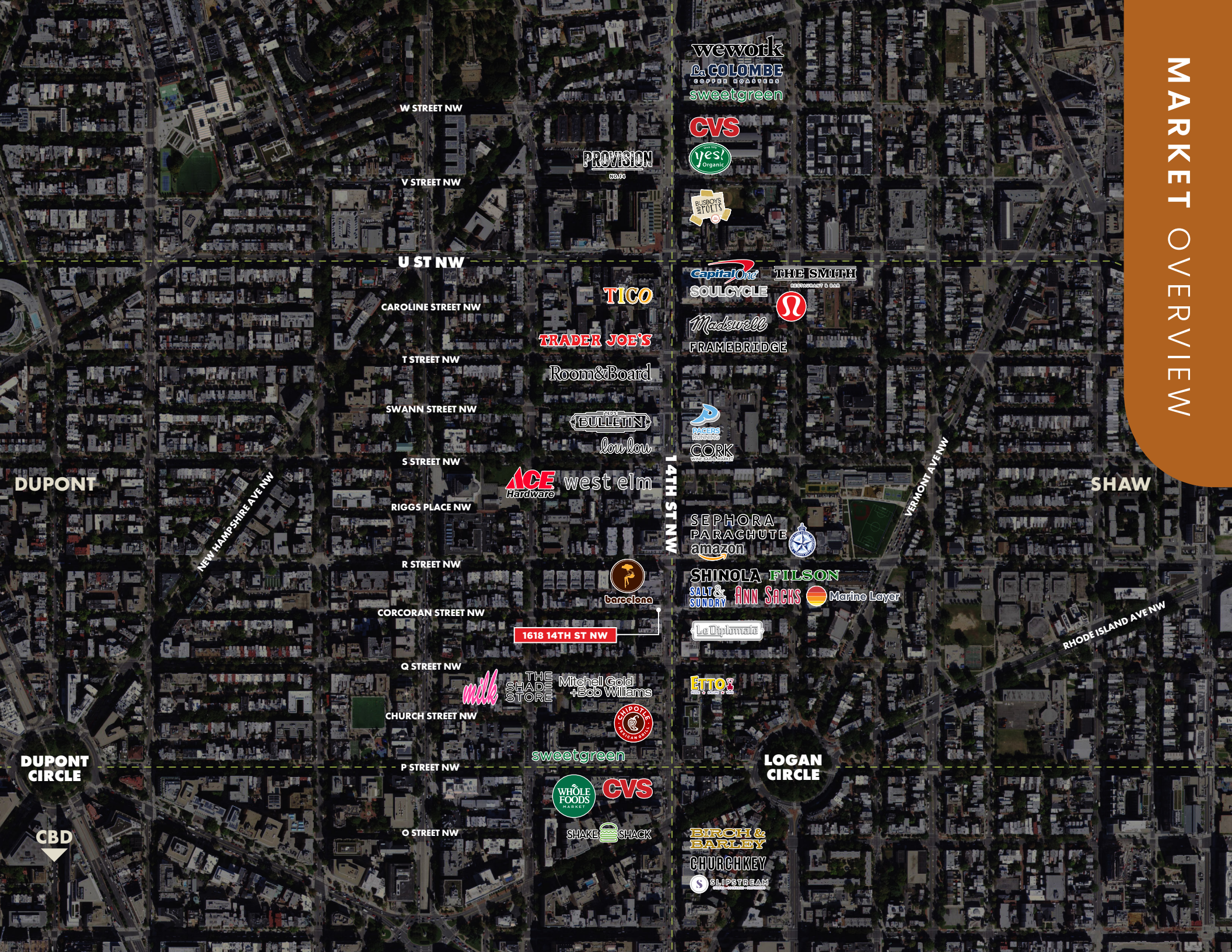
#### SPACES

- Lower level: 1,163sf
- Ground floor: 1,480sf
- Second floor: 1,430sf

#### DETAILS

- Former JCREW Mens Store
- Building completely renovated in 2017
- Prime corner free-standing building
- Two-story building totaling approx. 4,073sf
- Lower level and ground floor can be demised

MARKET OVERVIEW



W STREET NW

V STREET NW

U ST NW

CAROLINE STREET NW

T STREET NW

SWANN STREET NW

S STREET NW

RIGGS PLACE NW

R STREET NW

CORCORAN STREET NW

Q STREET NW

CHURCH STREET NW

P STREET NW

O STREET NW

NEW HAMPSHIRE AVE NW

14TH ST NW

VERMONT AVENUE

RHODE ISLAND AVE NW

DUPONT

SHAW

DUPONT CIRCLE

LOGAN CIRCLE

CBD

wework  
L. COLOMBE  
sweetgreen

CVS  
Yes! Organic

BOYS OF POLITICS

Capital One  
SOULCYCLE

THE SMITH  
Ω

TICO  
TRADER JOE'S  
Room&Board

Madswell  
FRAMEBRIDGE

BULLETIN  
lou lou

PAGERS  
CORK

ACE Hardware  
west elm

SEPHORA  
PARACHUTE  
amazon

barcelona

SHINOLA FILSON  
SALT & SONDRY Ann Sacks Marine Layer

1618 14TH ST NW

Le Diplomate

milk  
THE SHADE STORE  
Mitchel Gold + Bob Williams

ETTO'S

CLAPNETE

sweetgreen

WHOLE FOODS MARKET  
CVS  
SHAKE SHACK

BIRCH & BARLEY  
CHURCHKEY  
SLIPSTREAM

west elm

CORK  
WINE BAR & MARKET

SEPHORA

PARACHUTE

amazon



RIGGS ST NW

R ST NW

SHINOLA

FILSON  
SINCE 1897

Marine Layer

ANN SACKS

SALT & SUNDRY



barcelona

14TH ST NW

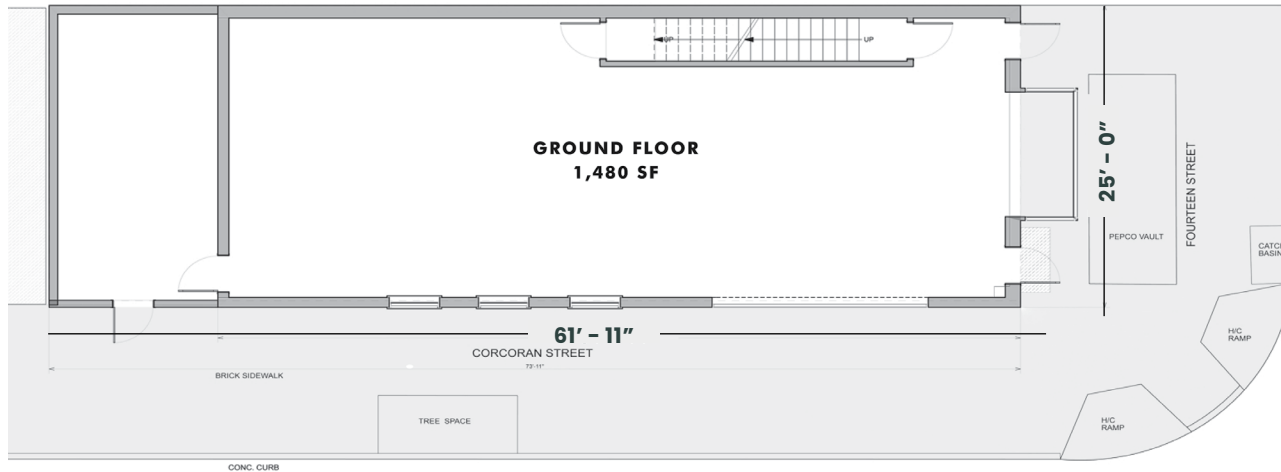
1618 14TH ST NW



CORCORAN ST NW

Le Diplomate

CLOSE IN MAP



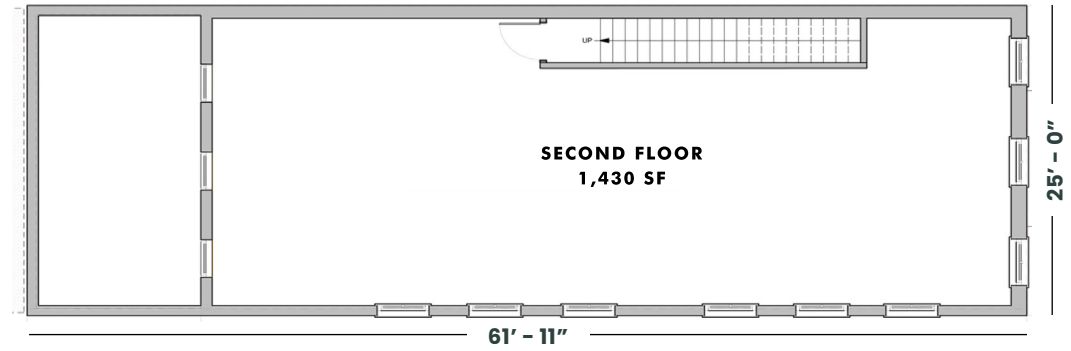
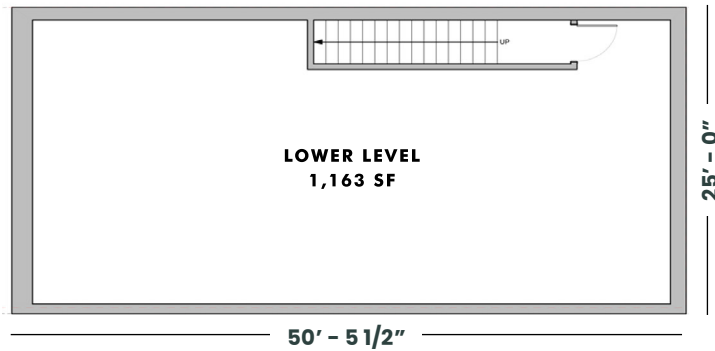
↑  
N  
14TH ST NW  
S  
↓

## DEMISED OPTIONS

**OPTION 1:**  
Full Building  
4,073 SF

**OPTION 2:**  
Ground floor &  
Lower Level  
2,643 SF available

**OPTION 3**  
Second Floor  
1,430 SF available



### POPULATION

.25 MI 6,396 .5 MI 32,938 1 MI 98,127



### DAYTIME POPULATION

.25 MI 7,457 .5 MI 37,581 1 MI 187,428



### MEDIAN HHI

.25 MI \$137,154 .5 MI \$114,076 1 MI \$108,323



### EDUCATION

.25 MI 86.1% .5 MI 84.5% 1 MI 80.4%



### MEDIAN AGE

.25 MI 36.9 .5 MI 36.2 1 MI 34.7



### RIDERSHIP

U St/African-Amer Civil War Memorial/Cardozo  
Metro Station: 3min (5 mile)

© 2020 CBRE, Inc. All rights reserved. This information has been obtained from sources believed reliable, but has not been verified for accuracy or completeness. You should conduct a careful, independent investigation of the property and verify all information. Any reliance on this information is solely at your own risk. CBRE and the CBRE logo are service marks of CBRE, Inc. All other marks displayed on this document are the property of their respective owners, and the use of such logos does not imply any affiliation with or endorsement of CBRE. Photos herein are the property of their respective owners. Use of these images without the express written consent of the owner is prohibited.

**CBRE**

[www.cbre.us/dc](http://www.cbre.us/dc)