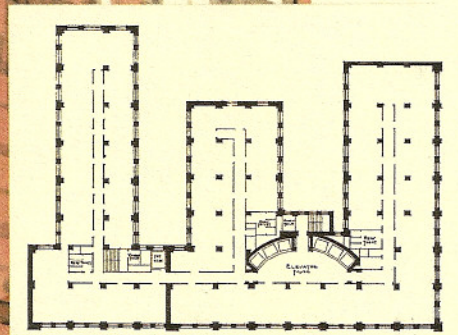
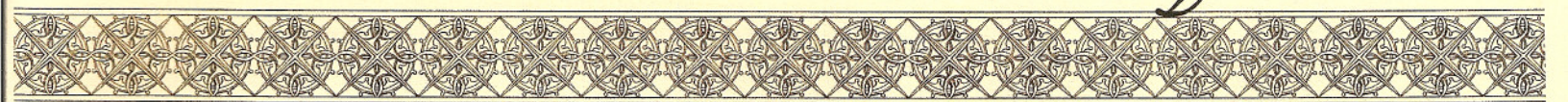


THE  
ROCKEFELLER  
BUILDING  
314



THE *Rockefeller*  
BUILDING



### Excellence

#### In office space

The Rockefeller Building is a prestigious address for professionals who appreciate tradition excellence and value.

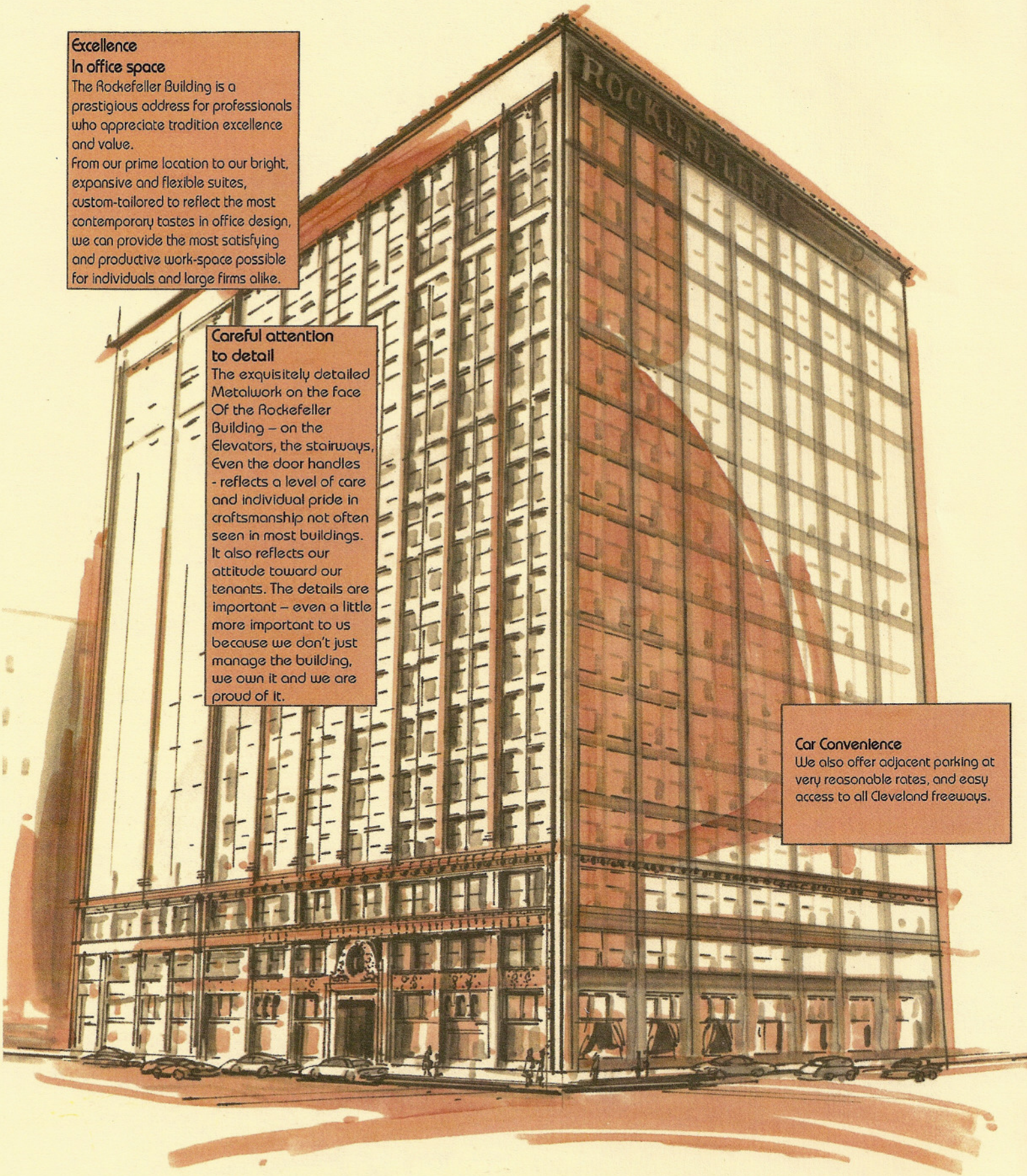
From our prime location to our bright, expansive and flexible suites, custom-tailored to reflect the most contemporary tastes in office design, we can provide the most satisfying and productive work-space possible for individuals and large firms alike.

#### Careful attention to detail

The exquisitely detailed Metalwork on the face Of the Rockefeller Building – on the Elevators, the stairways, Even the door handles - reflects a level of care and individual pride in craftsmanship not often seen in most buildings. It also reflects our attitude toward our tenants. The details are important – even a little more important to us because we don't just manage the building, we own it and we are proud of it.

#### Car Convenience

We also offer adjacent parking at very reasonable rates, and easy access to all Cleveland freeways.

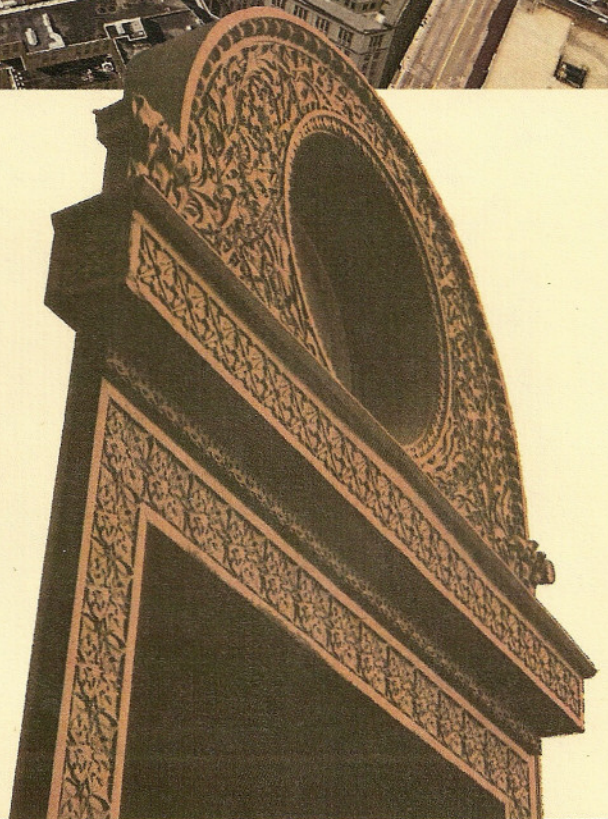




### **The Gateway to Cleveland**

The Warehouse District, Tower City Center and the new Federal Courthouse are all within walking distance of The Rockefeller Building. So are Cleveland's finest hotels. The State Office Building is across the street. The Justice Center and the Old Courthouse are just a minute away.

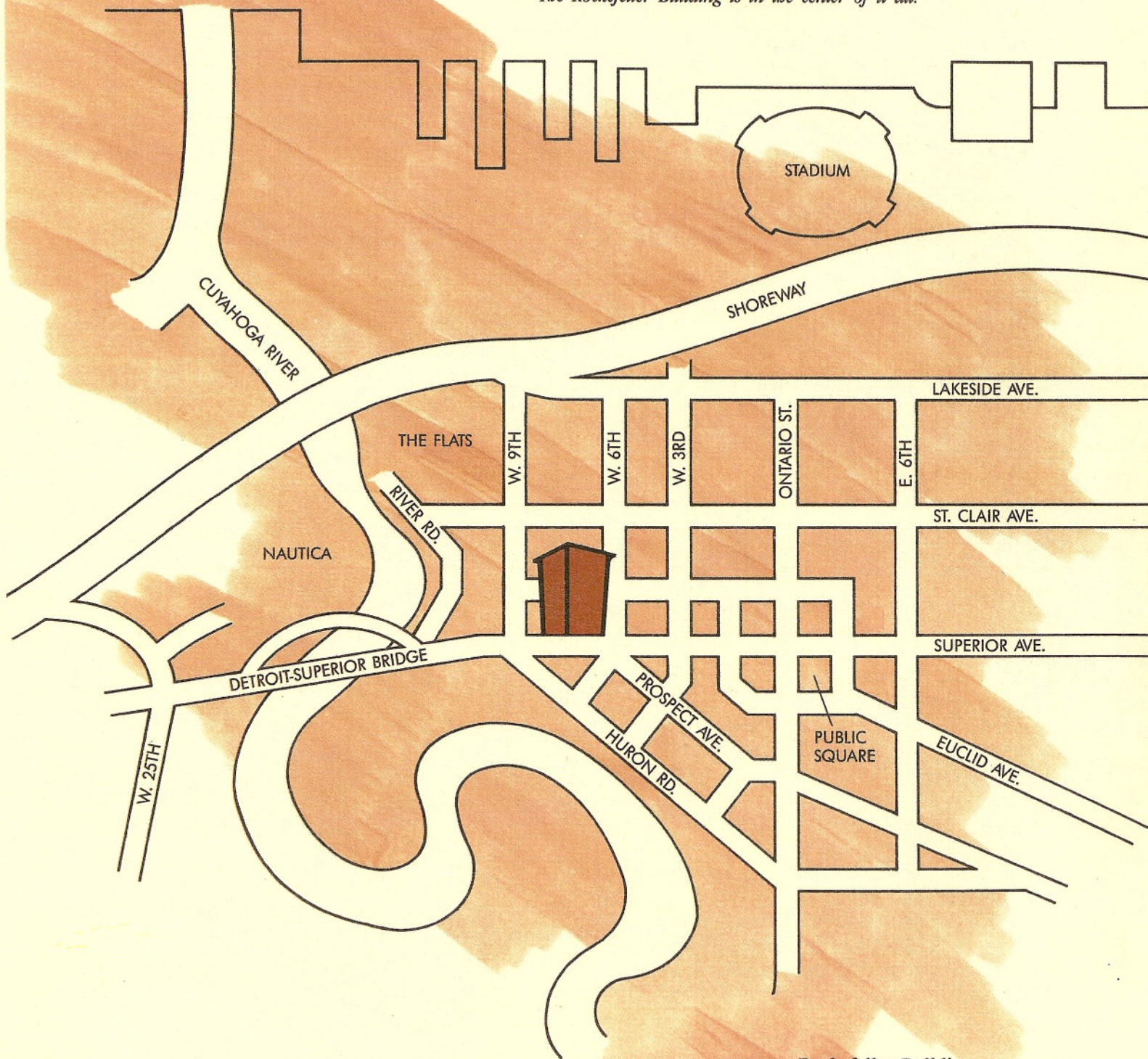
But superb location, high-demand space, and easy parking are only the beginning of The Rockefeller Building story. The building also offers a barber, an enjoyable coffee shop, and an impressive yet functional conference room, complete with a wet bar. The views of Lake Erie, the Cuyahoga River, and the Gold Coast are striking. And, of course the rates are excellent!



*The most exciting location in  
Cleveland*

**The center of it all**

*Few buildings in Cleveland are so conveniently located to the restaurants, the shopping, the nightlife, the lodging, the courts and city, state and federal government buildings. The Rockefeller Building is in the center of it all.*



**Rockefeller Building**  
614 Superior Avenue, N.W.  
Cleveland, OH 44113  
(216) 696-3929