



# FOR LEASE

## Allenmore Medical Plaza II

**3209 SOUTH 23RD ST**  
Tacoma, WA

**CLASS A MEDICAL OFFICE SPACE**  
Adjacent to the Allenmore  
Hospital Campus

**CLISE**  
PROPERTIES



**Kidder  
Mathews**



FOR LEASE

# Allenmore Medical Plaza II

3209 SOUTH 23RD STREET | TACOMA, WA



## Class "A" Medical Office Space

**SUITE 300** 6,770 SF (demisable)

**\$32.00 PSF**, per year, NNN

**SURFACE** parking at 5/1,000 SF

**STATE OF THE ART** medical office building secured with technologically advanced access card system that tracks times and point of entry. Telecommunication and connecting capabilities.

**ADJACENT** to Allenmore Hospital Campus with quick access to I-5 and Hwy 16

**MULTICARE ALLENMORE HOSPITAL**, established in 1929 offers Pierce County Residents convenient access to hundreds of care providers, the latest diagnostic and treatment technologies plus a 24 hour emergency department

**WILL FRAME**  
253.722.1412  
will.frame@kidder.com

**DREW FRAME**  
253.722.1433  
drew.frame@kidder.com

KIDDER.COM

This information supplied herein is from sources we deem reliable. It is provided without any representation, warranty, or guarantee, expressed or implied as to its accuracy. Prospective Buyer or Tenant should conduct an independent investigation and verification of all matters deemed to be material, including, but not limited to, statements of income and expenses. Consult your attorney, accountant, or other professional advisor.

**CLISE**  
PROPERTIES

**km** Kidder  
Mathews

FOR LEASE

# Allenmore Medical Plaza II

3209 SOUTH 23RD STREET | TACOMA, WA

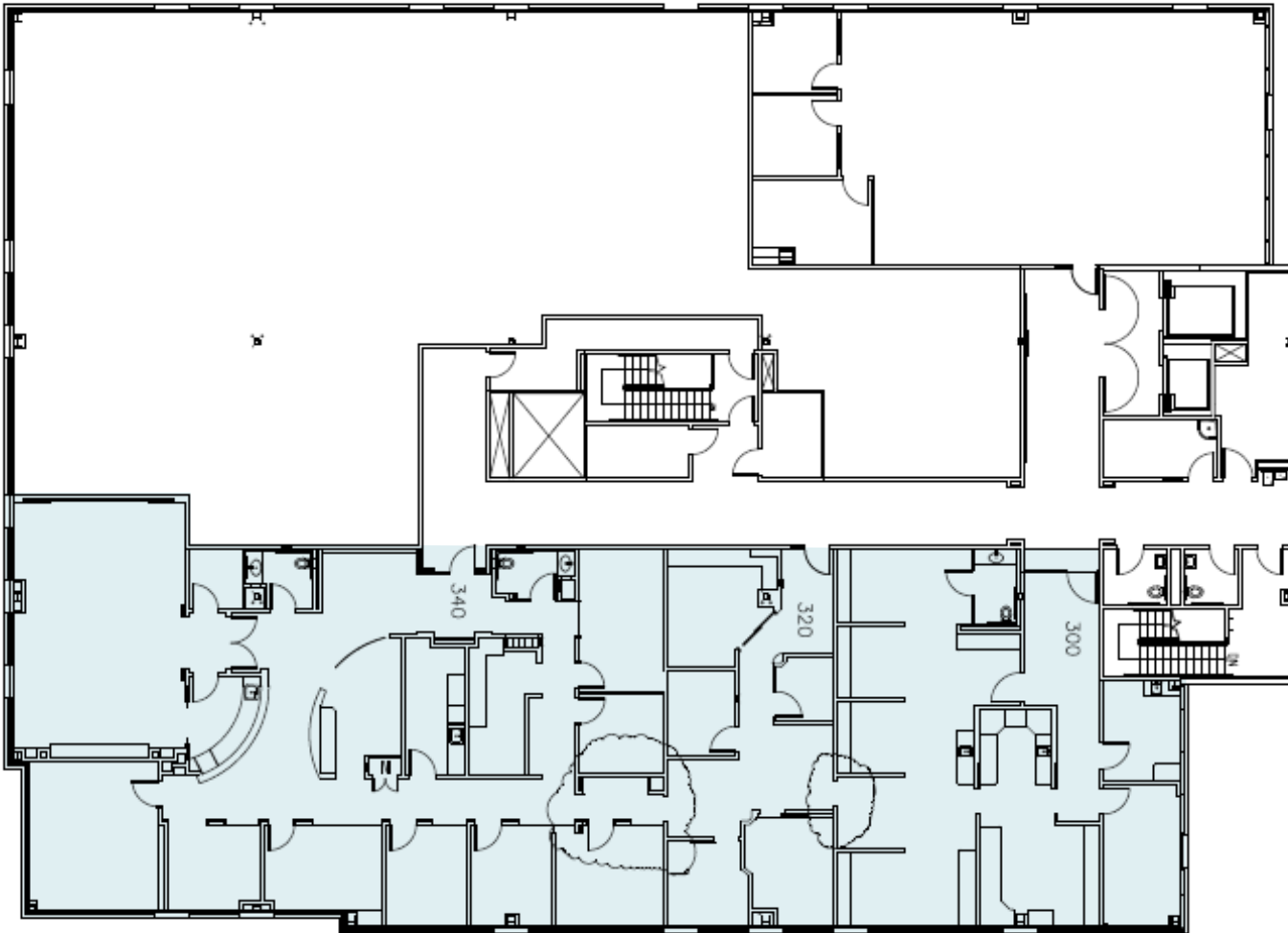


FOR LEASE

# Allenmore Medical Plaza II

3209 SOUTH 23RD STREET | TACOMA, WA

Suite 300



6,770

SQUARE FEET (DEMISABLE)

**WILL FRAME**

253.722.1412

[will.frame@kidder.com](mailto:will.frame@kidder.com)

**DREW FRAME**

253.722.1433

[drew.frame@kidder.com](mailto:drew.frame@kidder.com)

KIDDER.COM

This information supplied herein is from sources we deem reliable. It is provided without any representation, warranty, or guarantee, expressed or implied as to its accuracy. Prospective Buyer or Tenant should conduct an independent investigation and verification of all matters deemed to be material, including, but not limited to, statements of income and expenses. Consult your attorney, accountant, or other professional advisor.

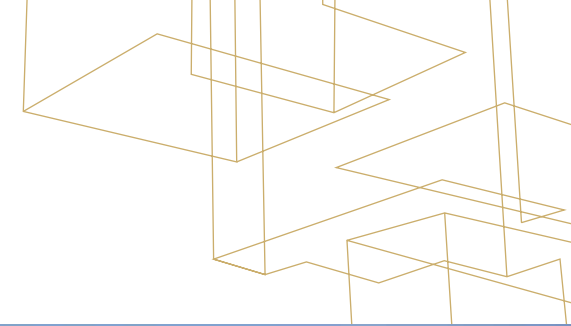
**CLISE**  
PROPERTIES

**km** Kidder  
Mathews

FOR LEASE

# Allenmore Medical Plaza II

3209 SOUTH 23RD STREET | TACOMA, WA



KIDDER.COM

This information supplied herein is from sources we deem reliable. It is provided without any representation, warranty, or guarantee, expressed or implied as to its accuracy. Prospective Buyer or Tenant should conduct an independent investigation and verification of all matters deemed to be material, including, but not limited to, statements of income and expenses. Consult your attorney, accountant, or other professional advisor.

CLISE  
PROPERTIES

km Kidder  
Mathews