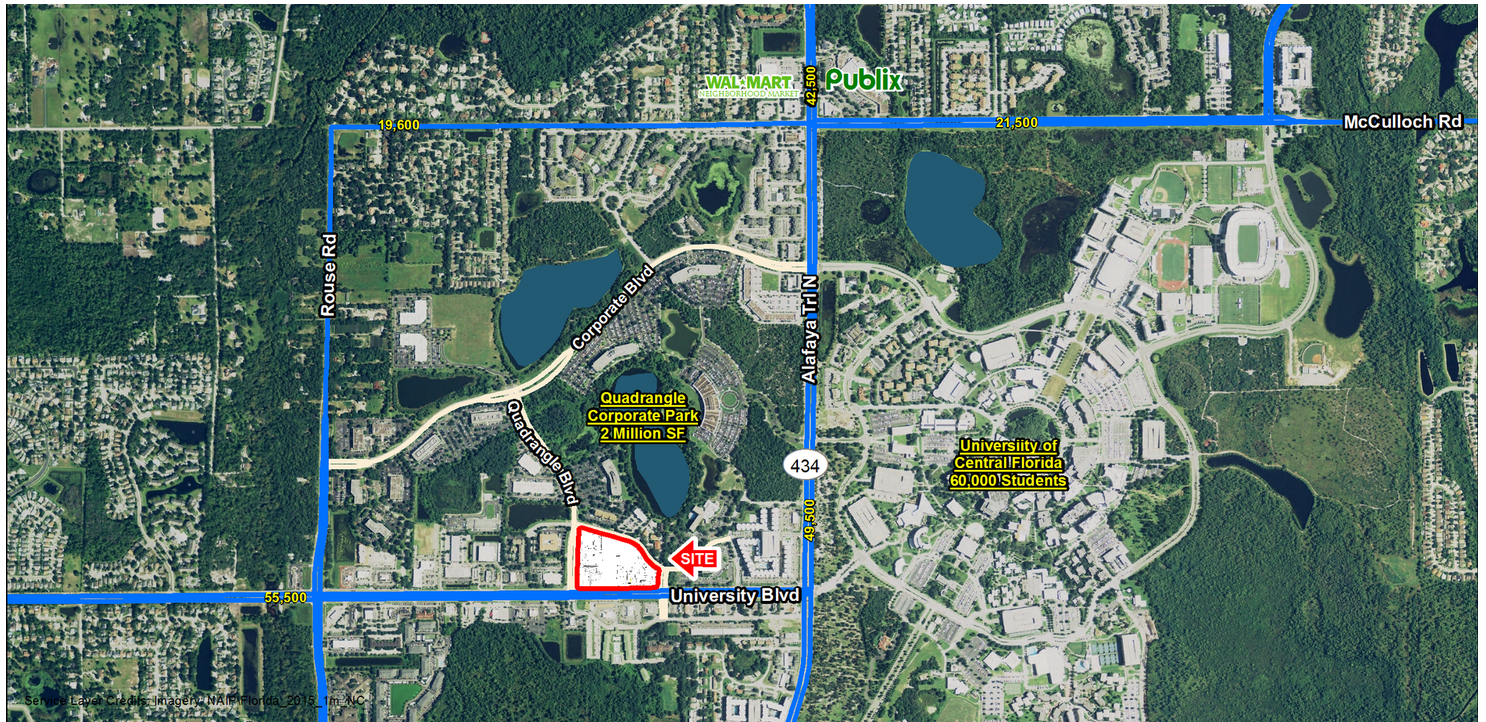


# UNIVERSITY POINTE

University Blvd & Quadrangle Blvd, Orlando, FL 32817

## EXECUTIVE SUMMARY



### LOCATION OVERVIEW

NEC of University Blvd and Quadrangle Blvd

### PROPERTY HIGHLIGHTS

- New Development at signalized intersection
- Main entry point to Quadrangle Corporate Park with over 2 million SF of office space
- Less than 1 mile from UCF campus with over 60,000 students and 11,000 faculty/staff
- Nearby corporate hubs' employee counts: 14,300+
- Central Florida Research Park (CFRP) - 9,500+ employees
- Siemens - 3,300 employees
- Lockheed Martin - 1,500 employees
- Traffic Counts (AADT): University Blvd - 55,500 and Alafaya Trail - 49,500
- GLA: 18,300 SF

### DEMOGRAPHICS

	1 MILE	3 MILES	5 MILES
Total Population	11,953	91,187	228,554
Daytime Population	31,093	103,229	212,486
Households	3,056	29,340	79,843
Average HH Income (\$)	46,852	67,245	71,497



### EXCLUSIVE AGENT(S)

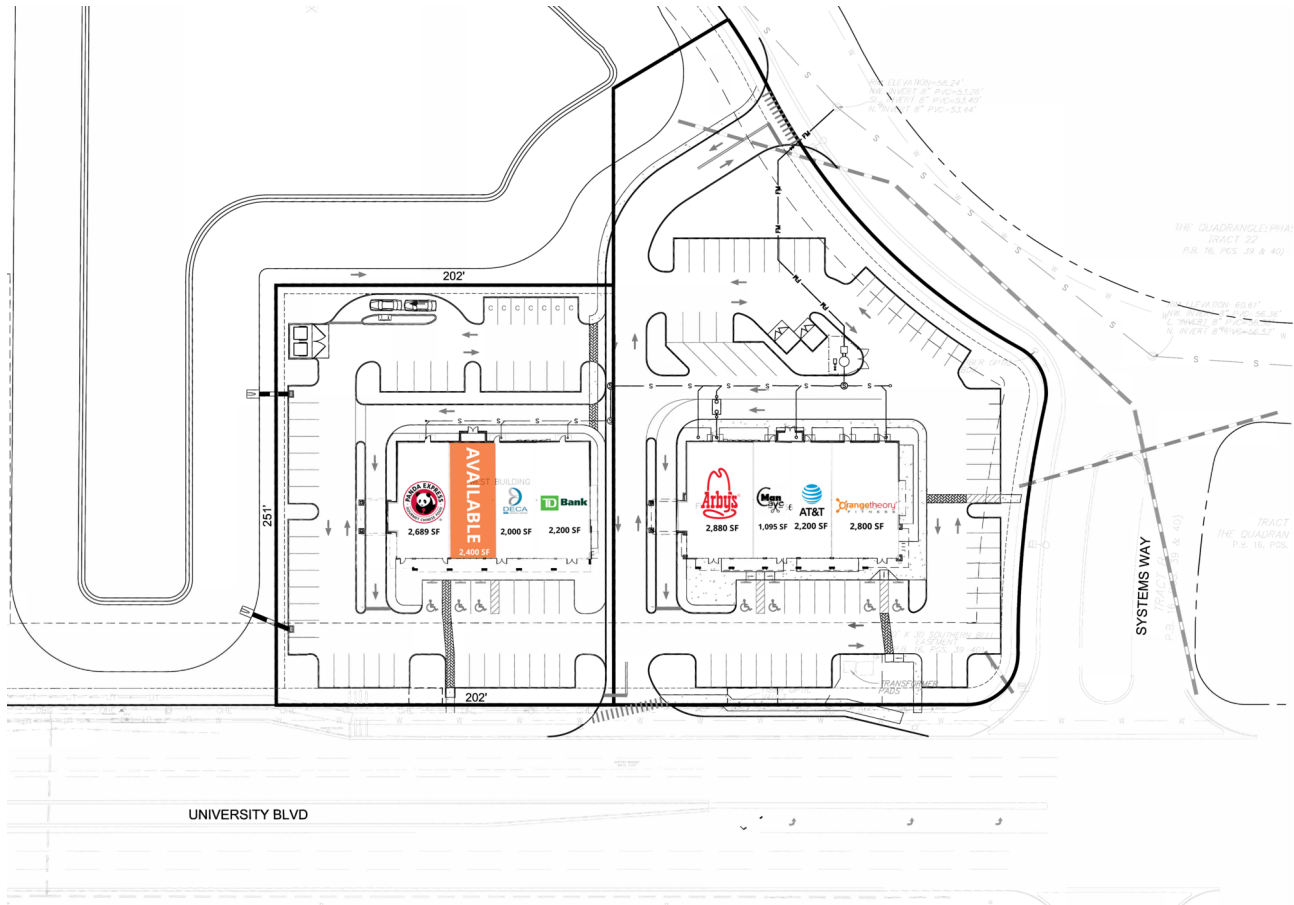
GAVIN WALSH • gavin.walsh@tscg.com • 407.788.0543



# UNIVERSITY POINTE

University Blvd & Quadrangle Blvd, Orlando, FL 32817

## SITE PLAN



SUITE	TENANT NAME	SPACE SIZE
1	Panda Express	2,689 SF
2	Available	2,400 SF
3	DECA	2,000 SF
4	TD Bank	2,200 SF
5	Arbys	2,880 SF
6	Man Cave for Men	1,095 SF
7	AT&T	2,200 SF
8	Orange Theory	2,800 SF

### EXCLUSIVE AGENT(S)

GAVIN WALSH • gavin.walsh@tscg.com • 407.788.0543

