

# SEC 227TH AVENUE & LONE MOUNTAIN ROAD

EXCLUSIVE LISTING | OWNER/AGENT | MARICOPA COUNTY, ARIZONA

**LOCATION** Property is located south of the southeast corner of 227th Avenue and Lone Mountain Road in Maricopa County, Arizona.

**SIZE** ±19.17 acres

**PRICE** Submit

**PARCEL** Southern portion of 503-37-004B

**ZONING** R-43 Rural Residential (one house per acre)

## UTILITIES

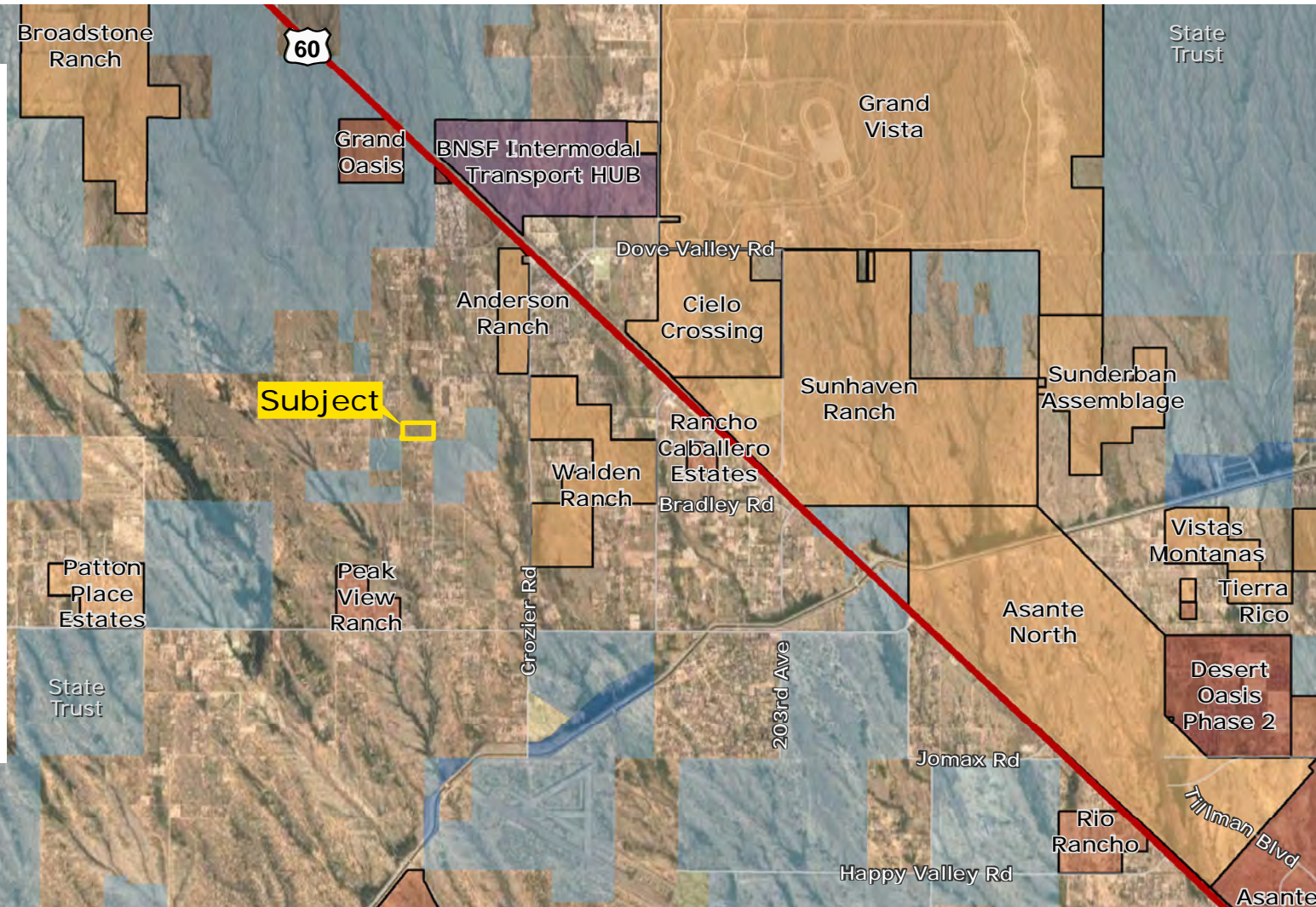
Power: Arizona Public Service to Site

Sewer: Private Septic will be required upon development

Water: Private Well will be required upon development

## COMMENTS

- The property is located 3/8 of a mile south of Lone Mountain Road.
- Lone Mountain Road is a paved county maintained road.



**Mike Schwab, Owner/Agent** | [mschwab@landadvisors.com](mailto:mschwab@landadvisors.com)

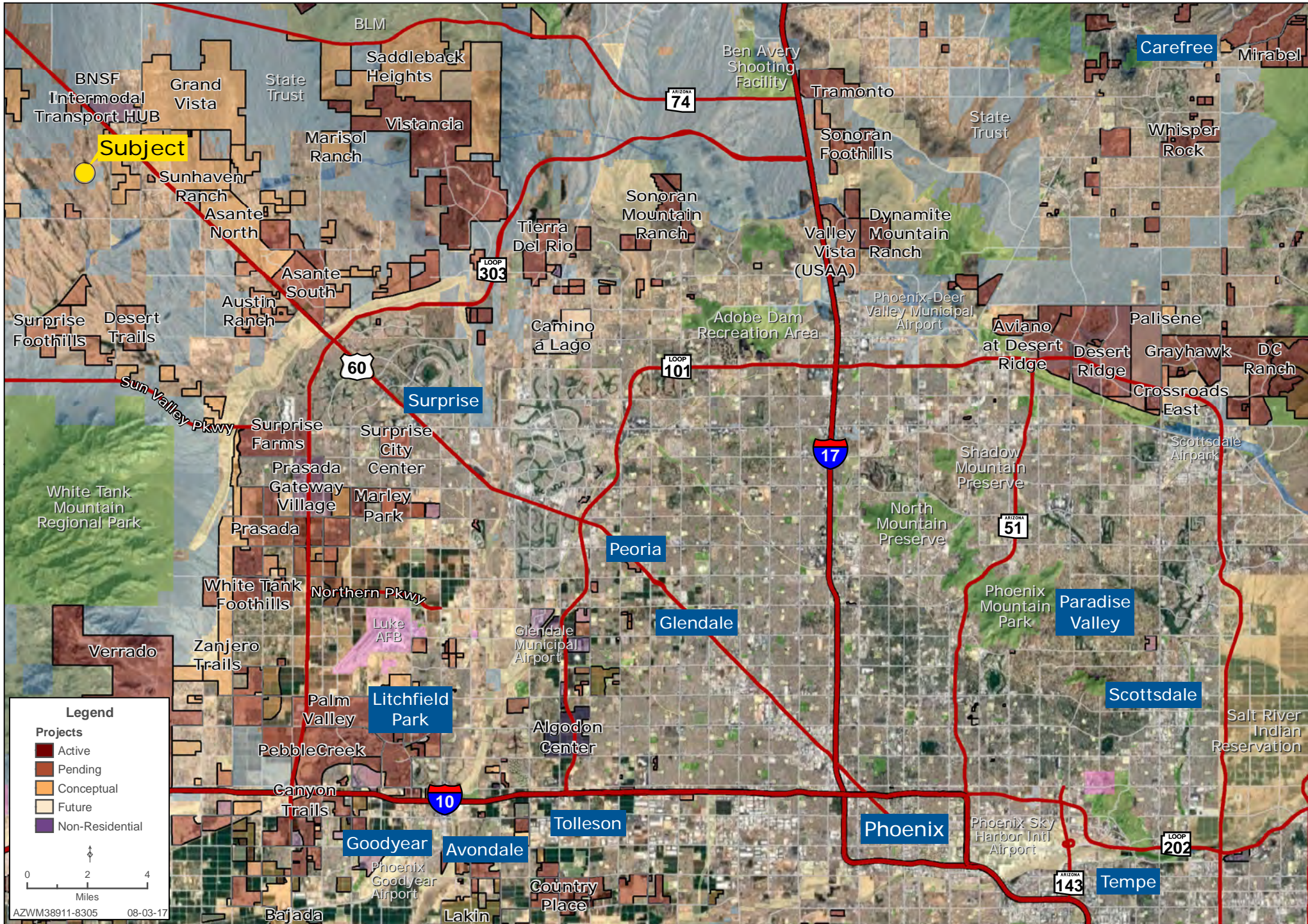
4900 North Scottsdale Road, Suite 3000, Scottsdale, Arizona 85251 ph. 480.483.8100 | [www.landadvisors.com](http://www.landadvisors.com)

The information contained herein is from sources deemed reliable. We have no reason to doubt its accuracy but do not guarantee it. It is the responsibility of the person reviewing this information to independently verify it. This package is subject to change, prior sale or complete withdrawal. AZWM38911-8.29.17



# REGIONAL MAP

Mike Schwab | 480.483.8100 | www.landadvisors.com









# PROPERTY DETAIL MAP

Mike Schwab | 480.483.8100 | www.landadvisors.com

