

9988 HIBERT STREET
SAN DIEGO, CA 92131



SUITE FEATURES

- Suite 103 - 2,240 SF
- 6 Private Offices
- 1 Small Conference Room (can be used as a 7th office)
- Kitchen and Storage
- Expiration: October 31, 2022
- Asking Rate: \$1.50 + E

PROPERTY FEATURES

- Fitness Center
- Renovated common areas
- Immediate access to Hwy 52 and I-15
- Retail amenities in walking distance, including Mira Mesa Marketplace

ANNIE CALDWELL
Associate
Lic. 01949669
+1 858 646 4722
annie.caldwell@cbre.com

CBRE, INC. | 4365 Executive Drive, Suite 1600 | San Diego, CA 92121 | www.cbre.com

© 2018 CBRE, Inc. All rights reserved. This information has been obtained from sources believed reliable, but has not been verified for accuracy or completeness. You should conduct a careful, independent investigation of the property and verify all information. Any reliance on this information is solely at your own risk.

CBRE

9988 HIBERT STREET
SAN DIEGO, CA 92131



ANNIE CALDWELL
Associate
Lic. 01949669
+1 858 646 4722
annie.caldwell@cbre.com

CBRE, INC. | 4301 La Jolla Village Drive, Suite 3000 | San Diego, CA 92122 | www.cbre.us

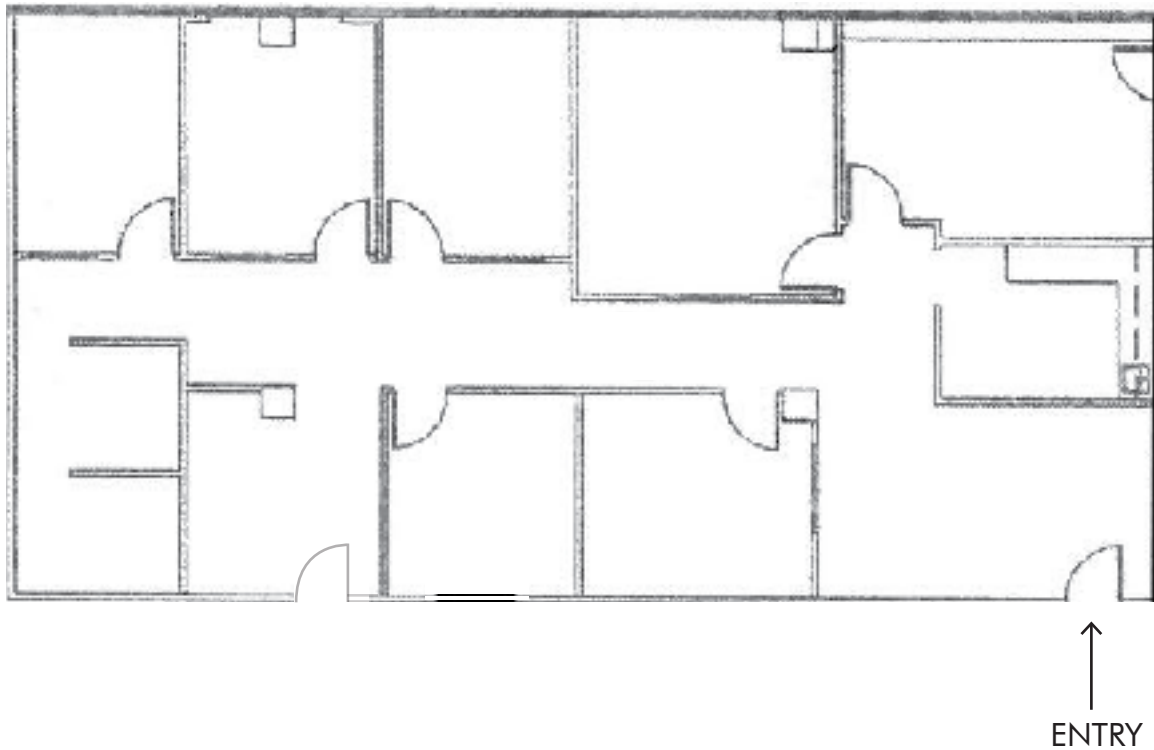
© 2018 CBRE, Inc. All rights reserved. This information has been obtained from sources believed reliable, but has not been verified for accuracy or completeness. You should conduct a careful, independent investigation of the property and verify all information. Any reliance on this information is solely at your own risk.

CBRE

9988 HIBERT STREET
SAN DIEGO, CA 92131

AVAILABLE FOR SUBLEASE:

Suite 103 - 2,240 SF



ANNIE CALDWELL
Associate
Lic. 01949669
+1 858 646 4722
annie.caldwell@cbre.com

CBRE, INC. | 4301 La Jolla Village Drive, Suite 3000 | San Diego, CA 92122 | www.cbre.us

© 2018 CBRE, Inc. All rights reserved. This information has been obtained from sources believed reliable, but has not been verified for accuracy or completeness. You should conduct a careful, independent investigation of the property and verify all information. Any reliance on this information is solely at your own risk.

CBRE