

Maui Lani Village Center Vacant Lot For Sale \$517,000 Fee Simple



89 La'a Street
Kahului, Maui, Hawaii

Exclusively offered For Sale by

Scott Kenar, R(S) and Grant E. Howe, CCIM R(B)



COMMERCIAL PROPERTIES
OF MAUI

444 Hana Highway, #C Kahului, HI 96732-2315

(808)244-2200 OFFICE | (808)442-1195 FAX

www.mauibiz.com | skenar@mauibiz.com | ghowe@mauibiz.com E-MAIL



89 La'a Street



Kahului, Maui, Hawaii

PRICE	\$517,000 FS
LAND AREA	8,569 SQ.FT.
TMK	(2) 3-8-097-045
ZONING	VMX
REAL PROPERTY TAXES	\$3,035.03 per year
WATER METER	One 5/8" water meter

PROPERTY DESCRIPTION

Corner location in Maui Lani Village Center, Maui's unique planned community, connecting Kahului and Wailuku with direct Access to Honoapiilani Highway and Kuihelani Highway.

3% Commission to Cooperating Brokers.

The information contained herein comes from sources deemed reliable, but no warranties or guarantees as to the accuracy of the information should be construed.

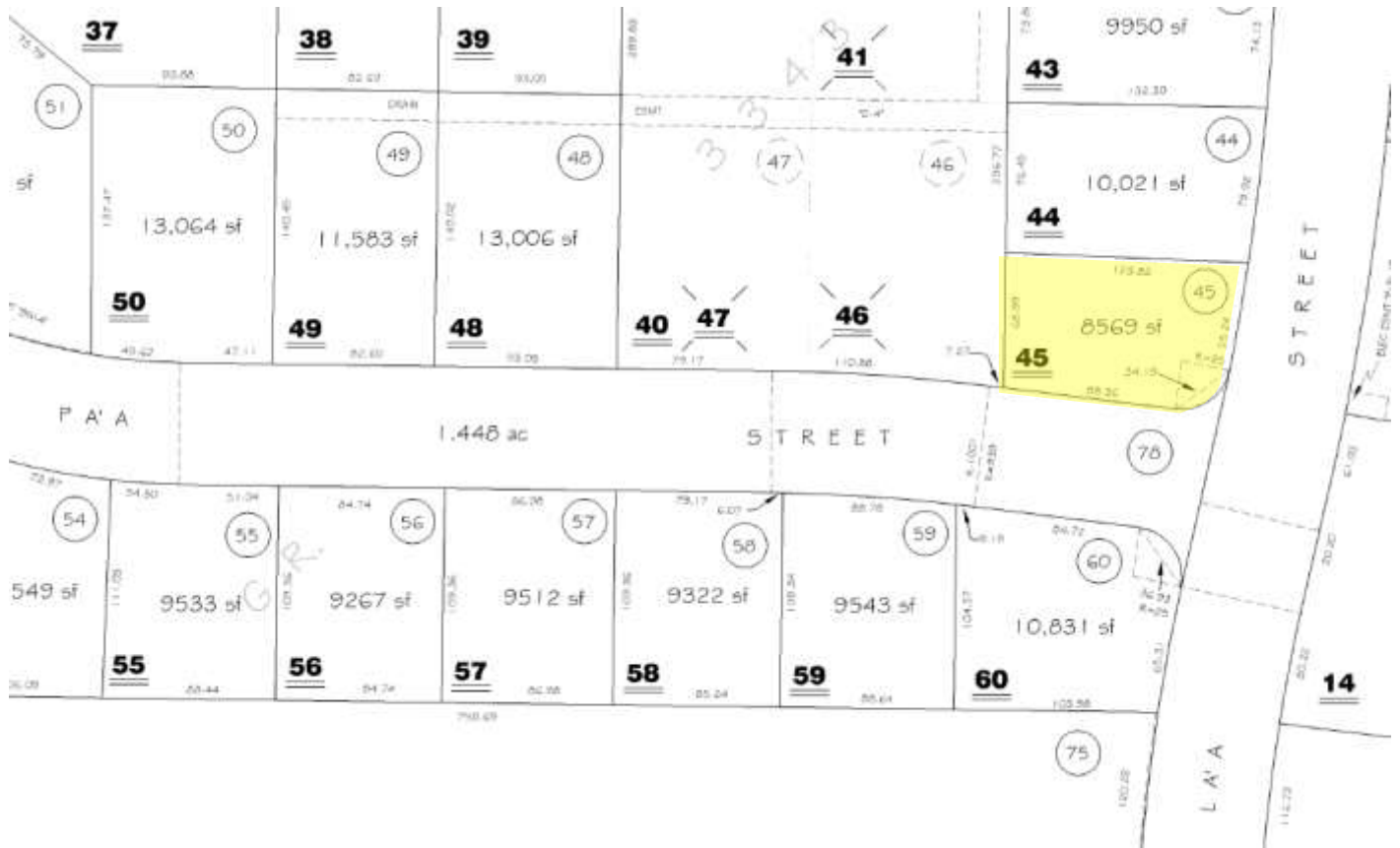
SCOTT KENAR, R(S) AND GRANT E. HOWE, CCIM R(B)

444 Hana Highway #C Kahului, HI 96732 | (808)244-2200 OFFICE | (808)442-1195 FAX

www.mauibiz.com | skenar@mauibiz.com | ghowe@mauibiz.com E-MAIL



Parcel Map



SCOTT KENAR, R(S) AND GRANT E. HOWE, CCIM R(B)

444 Hana Highway #C Kahului, HI 96732 | (808)244-2200 OFFICE | (808)442-1195 FAX

www.mauibiz.com | skenar@mauibiz.com | ghowe@mauibiz.com E-MAIL

