

LANDERBROOK CENTER I, II, III

5900-5920 LANDERBROOK DRIVE
MAYFIELD HEIGHTS, OHIO 44124

Bill Saltzman, CCIM, SIOR
Executive Vice President
216.525.1499
bsaltzman@crescorealestate.com



SHELBOURNE



**CUSHMAN &
WAKEFIELD**

CRESCO
Real Estate

LANDERBROOK CORPORATE CENTER

5900-5920 LANDERBROOK DRIVE



LANDERBROOK CORPORATE CENTER I
5900, 5910, 5920 LANDERBROOK DRIVE
MAYFIELD HEIGHTS, OHIO

Property Highlights

- 1. 5900 Landerbrook Drive**
 - 112,900 SF Class A office building
 - 28,000 SF available for lease
- 2. 5910 Landerbrook Drive**
 - 110,000SF Class A office building
 - Fully Occupied
- 3. 5920 Landerbrook Drive**
 - 115,000 SF Class A office building built
 - Fully Occupied

2



1



3



WELCOME TO SHELBOURNE PROPERTIES NORTHEAST OHIO

CLASS A PROPERTIES
VIBRANT MARKETS
QUALITY TENANTS

Shelbourne Global Solutions, LLC

Shelbourne Global Solutions, LLC is a privately held company, headquartered in New York City, which invests in and manages real estate related investments.

Shelbourne has successfully partnered with institutional and privately held firms in a wide variety of transactions with a focus on single and multi-tenanted office and retail properties.

Since early 2013, Shelbourne has acquired more than six (6) million square feet of Class "A" Office space & flex space and has in excess of \$1 billion in assets.



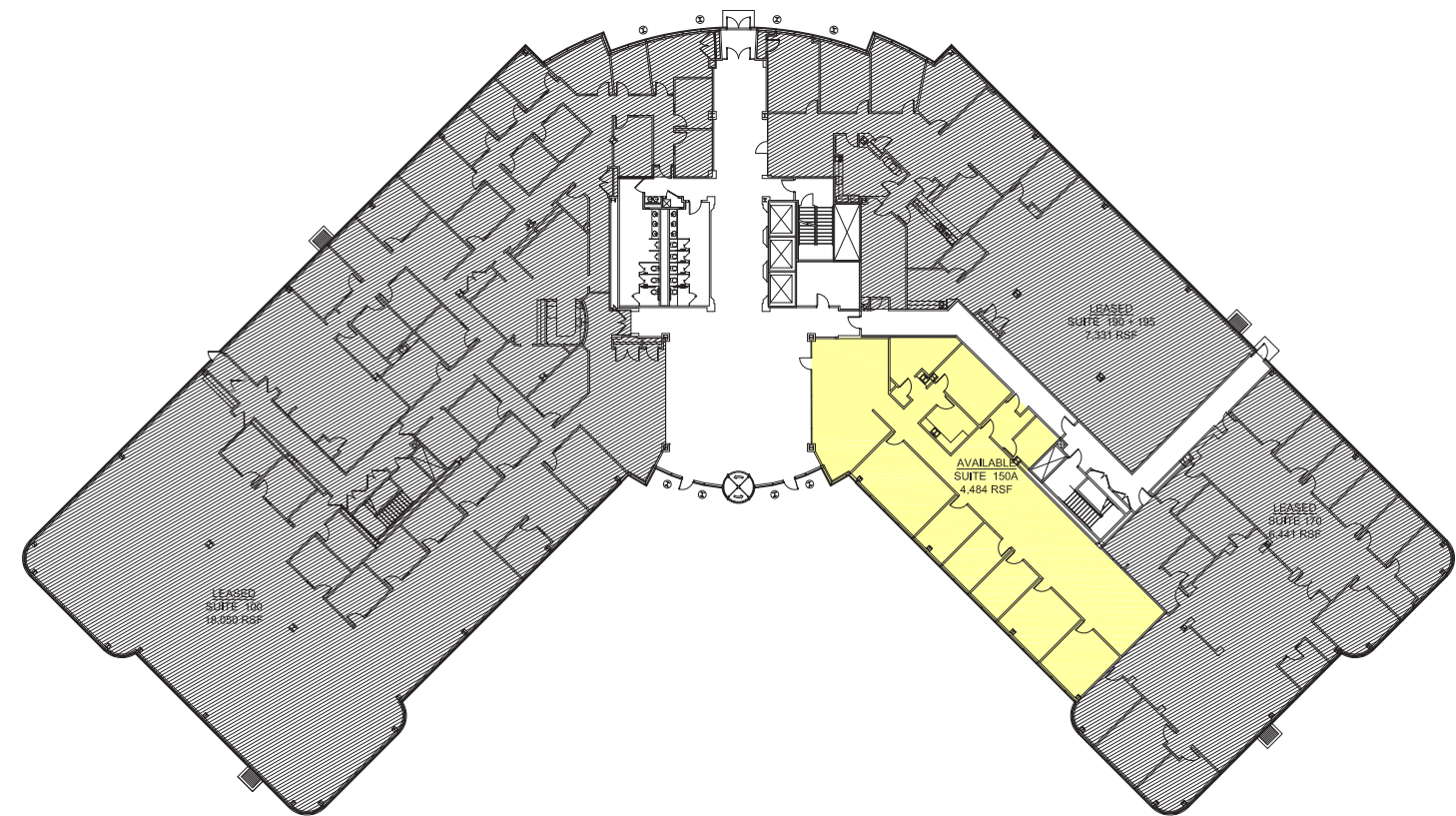
SHELBOURNE

2362 NOSTRAND AVE, SUITE 7
BROOKLYN, NY 11210

LANDERBROOK CORPORATE CENTER

LANDERBROOK CORPORATE CENTER I FLOOR PLANS

FIRST FLOOR - 4,484 SF AVAILABLE



FLR 01

SCALE: NTS
DATE: 01.11.2018

vocon.

LANDERBROOK CORPORATE CENTER I

5900 Landerbrook Drive
Mayfield Heights, OH 44124

CUSHMAN &
WAKEFIELD

CRESCO
Real Estate

LANDERBROOK CORPORATE CENTER

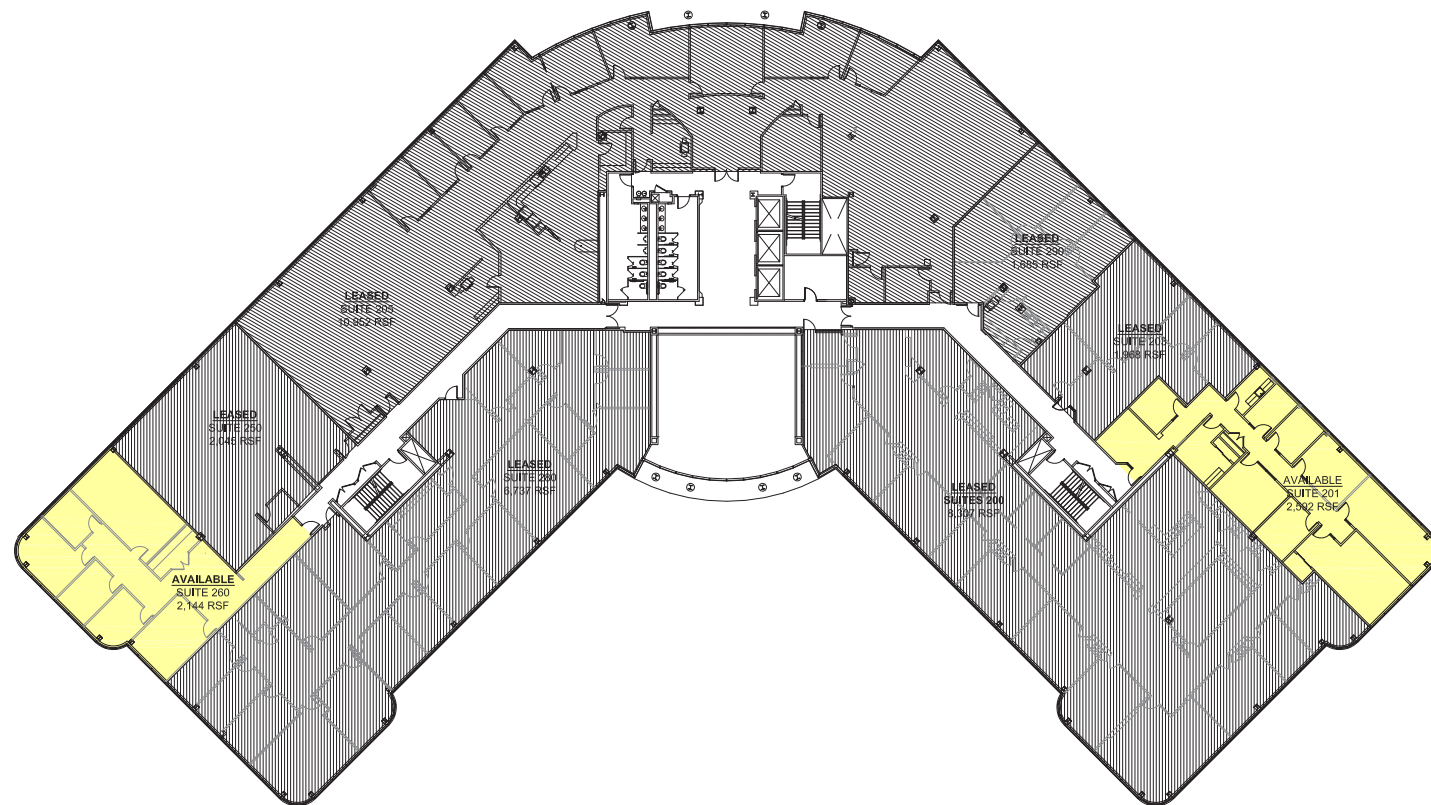
LANDERBROOK CORPORATE CENTER I FLOOR PLANS



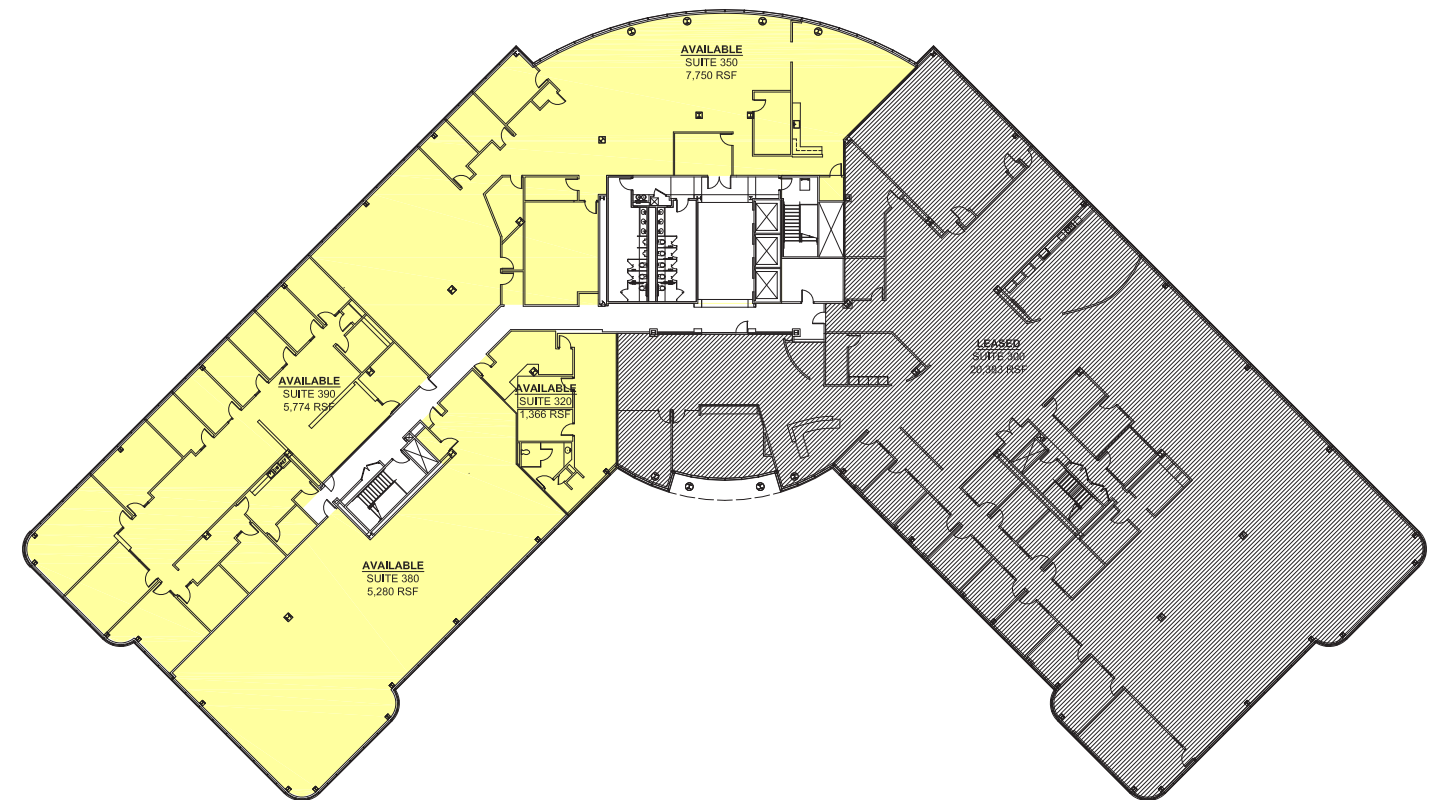
SECOND FLOOR - 4,736 SF AVAILABLE

SUITE 201: 2,592 SF

SUITE 260: 2,144 SF



THIRD FLOOR - 1,366 - 20,170 SF AVAILABLE



FLR 02

SCALE: NTS
DATE: 01.11.2018



LANDERBROOK CORPORATE CENTER I

5900 Landerbrook Drive
Mayfield Heights, OH 44124



CUSHMAN &
WAKEFIELD



FLR 03

SCALE: NTS
DATE: 01.11.2018



LANDERBROOK CORPORATE CENTER I

5900 Landerbrook Drive
Mayfield Heights, OH 44124

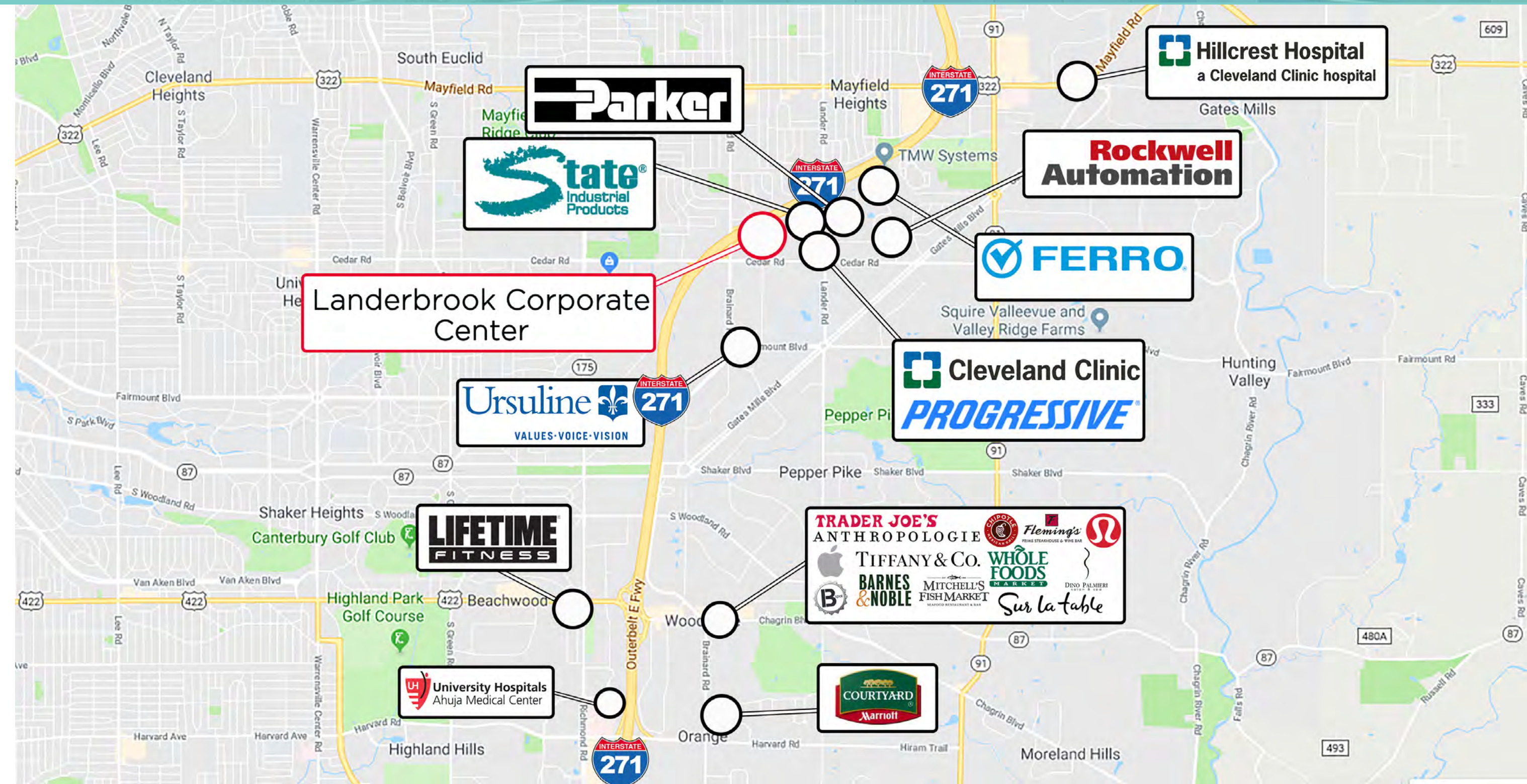


CUSHMAN &
WAKEFIELD



LANDERBROOK CORPORATE CENTER

5900-5920 LANDERBROOK DRIVE



LANDERBROOK CORPORATE CENTER

5900-5920 LANDERBROOK DRIVE



LANDERBROOK CORPORATE CENTER

Bill Saltzman, CCIM, SIOR
Executive Vice President
216.525.1499
bsaltzman@crescorealestate.com



SHELBOURNE

2362 NOSTRAND AVE
SUITE 7
BROOKLYN, NY 11210



**CUSHMAN &
WAKEFIELD**



3 Summit Park Drive, Suite 200
Cleveland, Ohio 44131
216.520.1200
crescorealestate.com