

AVAILABLE FOR SALE

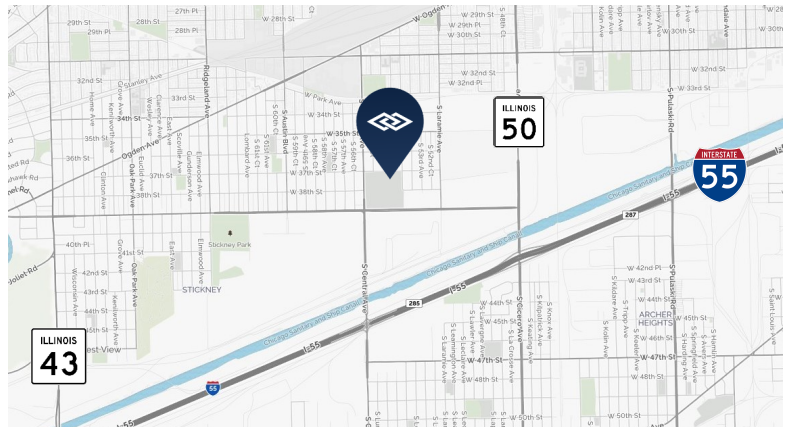
5350 W. 38TH STREET, CICERO, ILLINOIS

Price
Reduced



PROPERTY SPECIFICATIONS

SITE SIZE:	± 1.6 acres
AVAILABLE SPACE:	± 7,200 SF Freezer Building ± 2,500 SF Modular Office
CEILING HEIGHT:	18'
LOADING:	2 exterior docks <i>(Located in freezer building)</i>
ZONING:	M-2
TAXES:	\$4.23 (2018 paid in 2019)
SALE PRICE:	\$1,100,000 \$950,000



FEATURES

- Located 3 miles from Midway Airport
- Located 6 miles from Bedford Park CSX Terminal
- Close proximity to City of Chicago (9 miles to downtown)
- Newly paved, fenced, lit, and secured site
- Immediate access to I-55
- Less than 1 mile to Cicero & Central interchanges
- Ideal for outside storage

FOR ADDITIONAL
INFORMATION,
PLEASE CONTACT:

TODD HENDRICKS

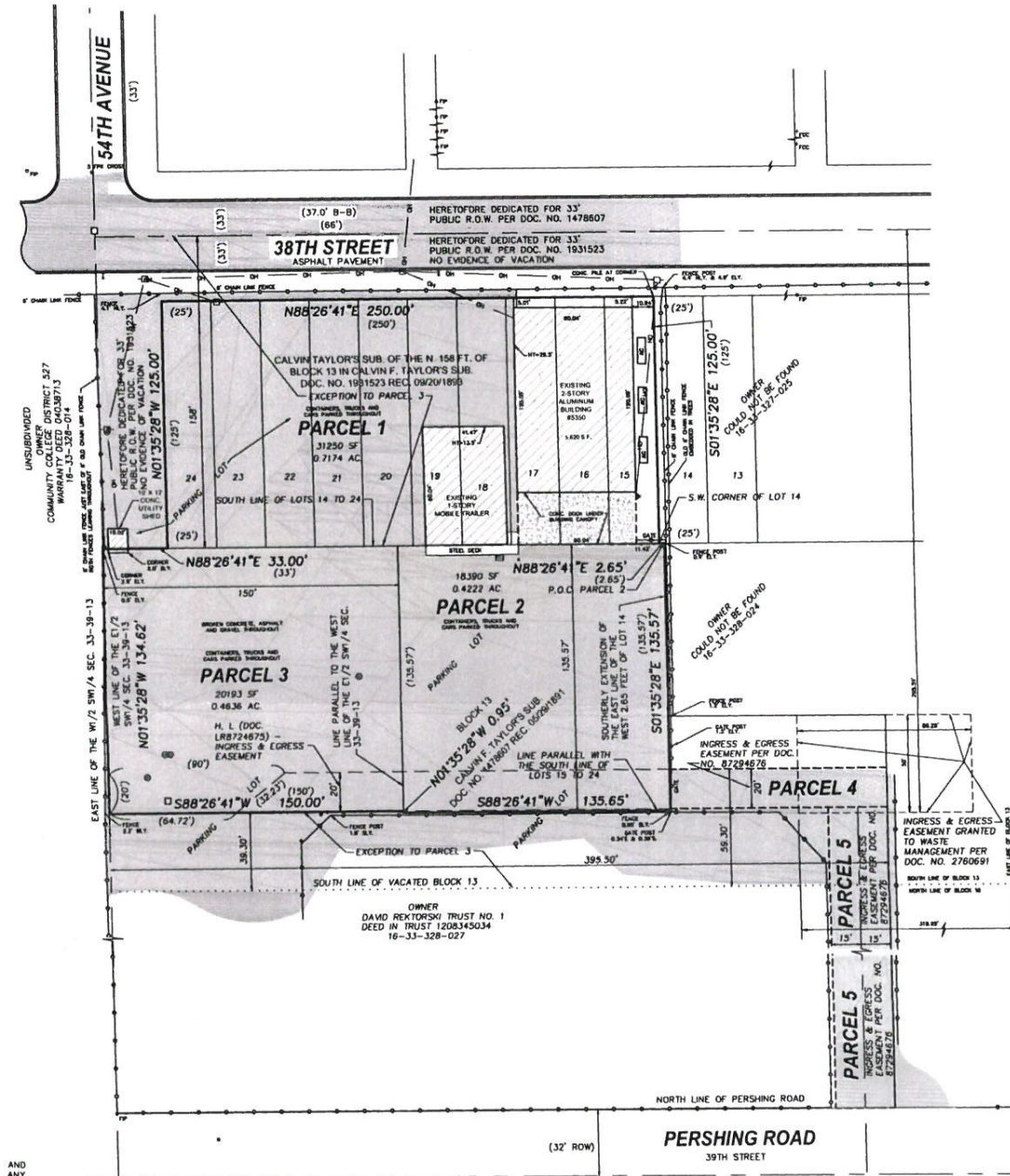
Associate

thendricks@darwinrealty.com

AVAILABLE FOR SALE

5350 W. 38TH STREET, CICERO, ILLINOIS

SURVEY



FOR ADDITIONAL INFORMATION, PLEASE CONTACT:

TODD HENDRICKS
Associate
thendricks@darwinrealty.com