

Research Park at Florida Atlantic University

Innovation Centre 2 - 3848 FAU Boulevard | Boca Raton, FL 33431



AVISON
YOUNG

Property Highlights

- Adjacent to Florida Atlantic University and the Boca Raton Executive Airport
- Access to Tri-Rail by Palm Tram or El Rio walking/bike trail
- University collaboration among park tenants
- On-site management

Availability

- Suite 100/207: 10,613 sf
- Suite 310: 6,372 sf

Rental Rate

- \$18.50 NNN

Operating Expenses

- \$8.36
Net of electric & janitorial

Benefits for Research Park Companies

[CLICK TO VIEW](#)

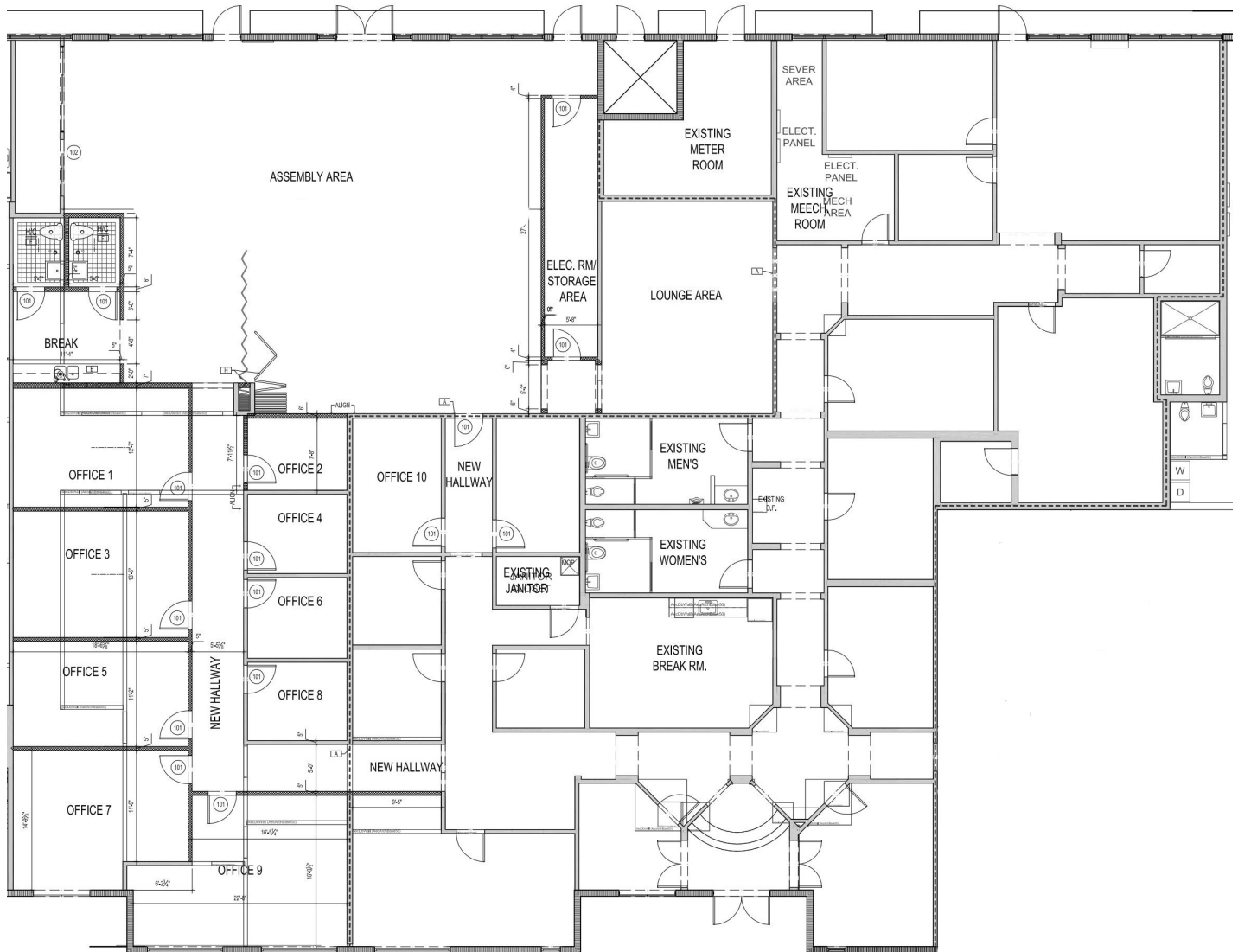
Greg Martin, Principal
D 954 903 3900
greg.martin@avisonyoung.com

Justin Cope, Principal
D 954 903 3701
justin.cope@avisonyoung.com

Lisa Blumer, Senior Associate
D 954 903 3703
lisa.blumer@avisonyoung.com

500 W Cypress Creek Road
Suite 550
Fort Lauderdale, FL 33309

Suite 100/207 - 10,613 sf



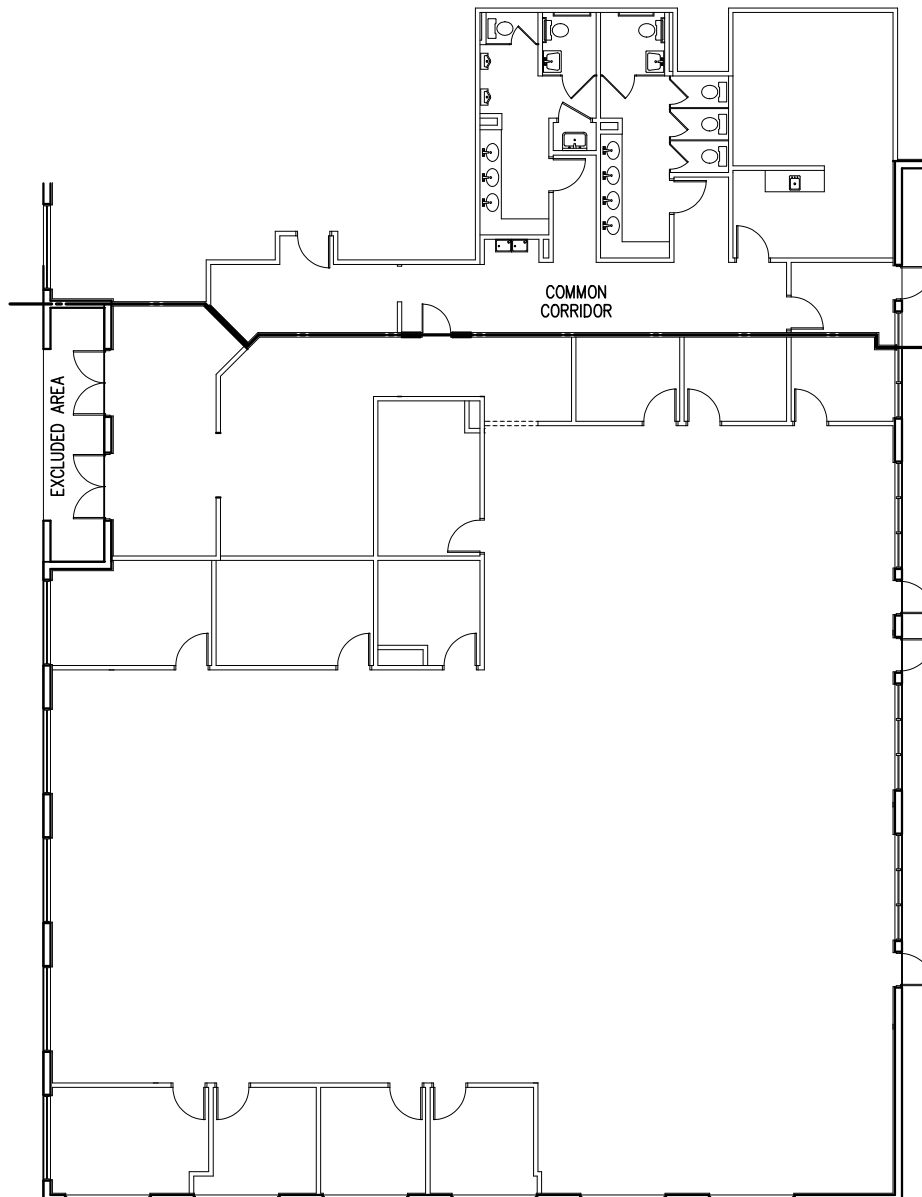
Greg Martin, Principal
D 954 903 3900
greg.martin@avisonyoung.com

Justin Cope, Principal
D 954 903 3701
justin.cope@avisonyoung.com

Lisa Blumer, Senior Associate
D 954 903 3703
lisa.blumer@avisonyoung.com

500 W Cypress Creek Road
Suite 550
Fort Lauderdale, FL 33309

Suite 310 - 6,372 sf



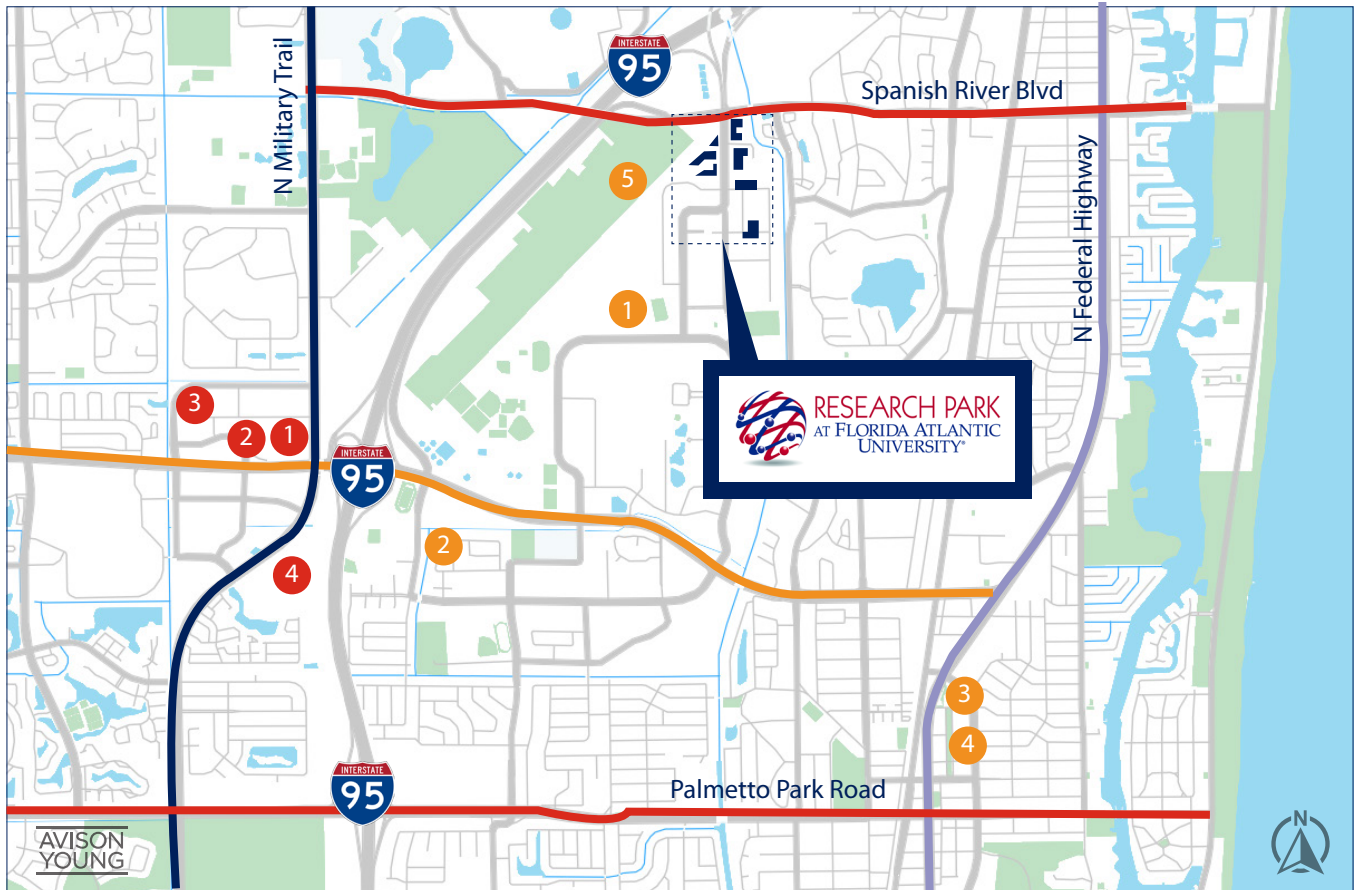
Greg Martin, Principal
D 954 903 3900
greg.martin@avisonyoung.com

Justin Cope, Principal
D 954 903 3701
justin.cope@avisonyoung.com

Lisa Blumer, Senior Associate
D 954 903 3703
lisa.blumer@avisonyoung.com

500 W Cypress Creek Road
Suite 550
Fort Lauderdale, FL 33309

Property Location



RESTAURANTS

- 1 Houston's
- 2 Seasons 52
- 3 New York Prime
- 4 Morton's Steakhouse

MISCELLANEOUS

- 1 Florida Atlantic University
- 2 Whole Foods
- 3 Boca Raton Museum of Art
- 4 Mizner Park
- 5 Boca Raton Airport Authority

Greg Martin, Principal
D 954 903 3900
greg.martin@avisonyoung.com

Justin Cope, Principal
D 954 903 3701
justin.cope@avisonyoung.com

Lisa Blumer, Senior Associate
D 954 903 3703
lisa.blumer@avisonyoung.com

500 W Cypress Creek Road
Suite 550
Fort Lauderdale, FL 33309