



FOR LEASE

SUBDIVIDABLE SPACE AVAILABLE

79 MAIN STREET, BOYLSTON, MA 01505



Voted Best Commercial Real Estate Brokerage - Worcester Business Journal

DREW HIGGINS

Vice President

higgins@kelleher-sadowsky.com

O: 508.635.6784

C: 508.735.1783

BRIAN JOHNSON

Vice President

johnson@kelleher-sadowsky.com

O: 508.635.6783

C: 774.272.1112

EXECUTIVE SUMMARY



OFFERING SUMMARY

Property Type:	Retail
Building Size:	6,028 SF
Available SF:	2,500 - 6,028 SF
Lot Size:	1.55 Acres
Zoning:	Village Business
Lease Rate:	\$10.00 SF/yr (NNN)

PROPERTY OVERVIEW

Kelleher & Sadowsky Associates, Inc. is pleased to offer this ±6,028 square foot well-maintained flex building as available for lease. This site is the former location of Wagner Audi and Crossfit Brutality. Located on Main Street (Route 70), this property is minutes from Route 290, Route 190 and Route 140. Situated on ±1.55 acres of land, the property offers an abundant amount of parking for both employees and clients. The building is comprised of ±3,000 SF of office space with the remainder as open-bay warehouse space that includes seven (7) 10' drive-in doors. Please give us a call today to schedule a tour.

DEMOGRAPHICS

	1 MILE	5 MILES	10 MILES
Total Households	878	62,971	165,051
Total Population	2,577	160,014	430,250
Average HH Income	\$90,842	\$71,904	\$75,990

DREW HIGGINS

Vice President

higgins@kelleher-sadowsky.com
 O: 508.635.6784
 C: 508.735.1783

BRIAN JOHNSON

Vice President

johnson@kelleher-sadowsky.com
 O: 508.635.6783
 C: 774.272.1112

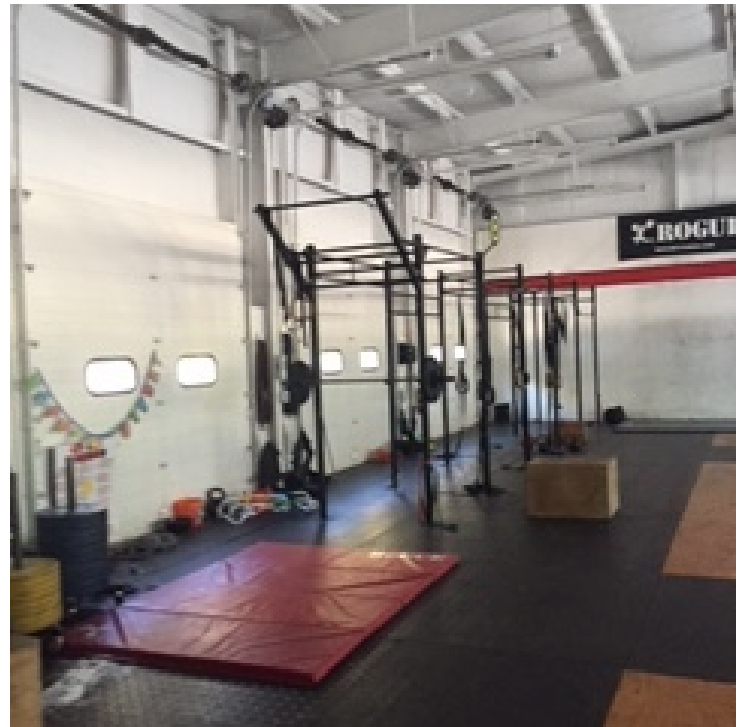
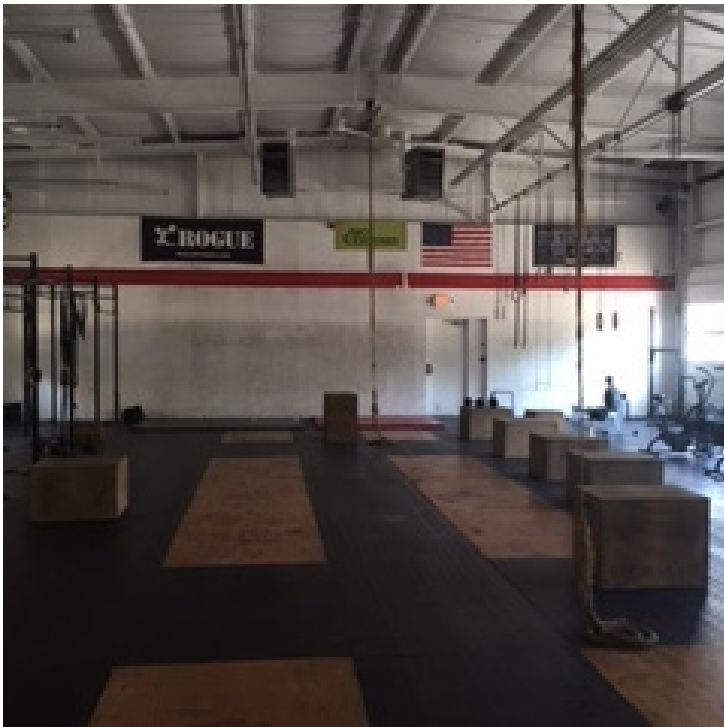
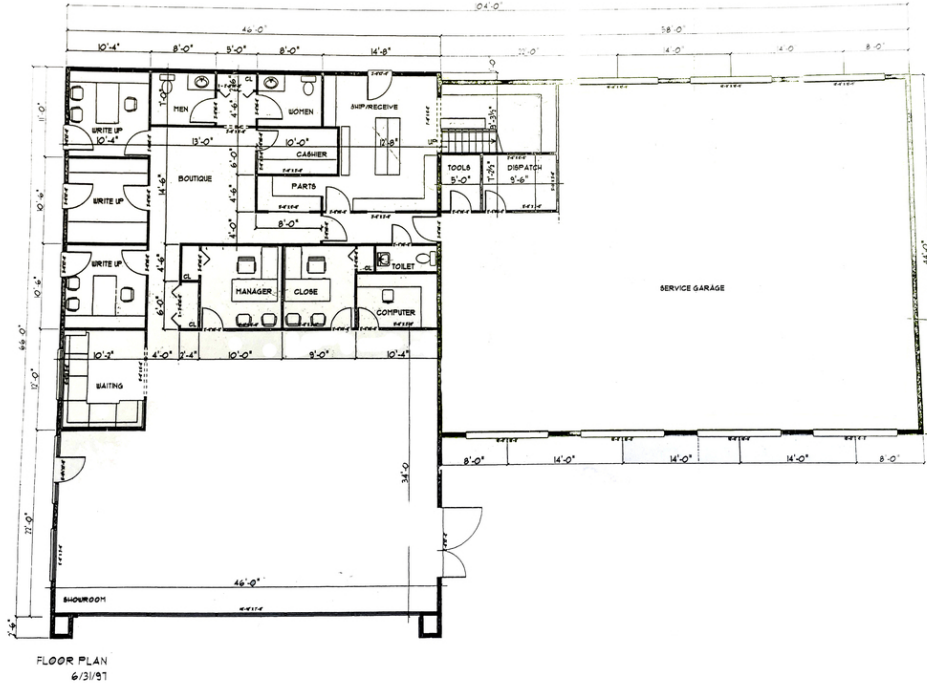


Rated Best Commercial Real Estate Brokerage - Worcester Business Journal

120 Front Street, Suite 210 | Worcester, MA 01608 | 508.755.0707 | kelleher-sadowsky.com

FOR LEASE | SUBDIVIDABLE SPACE AVAILABLE

ADDITIONAL PHOTOS



DREW HIGGINS

Vice President

higgins@kelleher-sadowsky.com

O: 508.635.6784

C: 508.735.1783

BRIAN JOHNSON

Vice President

johnson@kelleher-sadowsky.com

O: 508.635.6783

C: 774.272.1112



**Kelleher
& Sadowsky**

Voted Best Commercial Real Estate Brokerage - Worcester Business Journal

120 Front Street, Suite 210 | Worcester, MA 01608 | 508.755.0707 | kelleher-sadowsky.com

This information has been obtained from sources believed reliable. We have not verified it and make no guarantee, warranty or representation about it. Any projections, opinions, assumptions or estimates used are for example only and do not represent the current or future performance of the property. You and your advisors should conduct an independent investigation of the property to determine to your own satisfaction the suitability of the property for your needs.

REGIONAL MAP



120 Front Street, Suite 210 | Worcester, MA 01608 | 508.755.0707 | kelleher-sadowsky.com

DREW HIGGINS

Vice President

higgins@kelleher-sadowsky.com

O: 508.635.6784

C: 508.735.1783

BRIAN JOHNSON

Vice President

johnson@kelleher-sadowsky.com

O: 508.635.6783

C: 774.272.1112