

FOR LEASE

3500 East Palm Valley Boulevard



CARR
Development, Inc.



Phone: (512) 306-1771

Fax: (512) 327-6109

info@carrdevelopment.com
5121 Bee Cave Rd., Suite 207
Austin, TX 78746

FOR LEASE | 3500 EAST PALM VALLEY BOULEVARED, ROUND ROCK, TX 78665



PROPERTY INFO

- Attractive two story office building, located along East Palm Valley between I35 and SH130
- Easy access off East Palm Valley with multiple ingress/ egress points
- Adjacent to the Dell Diamond and numerous restaurants
- Easy access to Old Settlers Park, which features 3.3 miles of paved trails
- Convenient pull up surface parking
- Building size: 19,532 total RSF
- New construction with high-end finishes

SPACE AVAILABLE

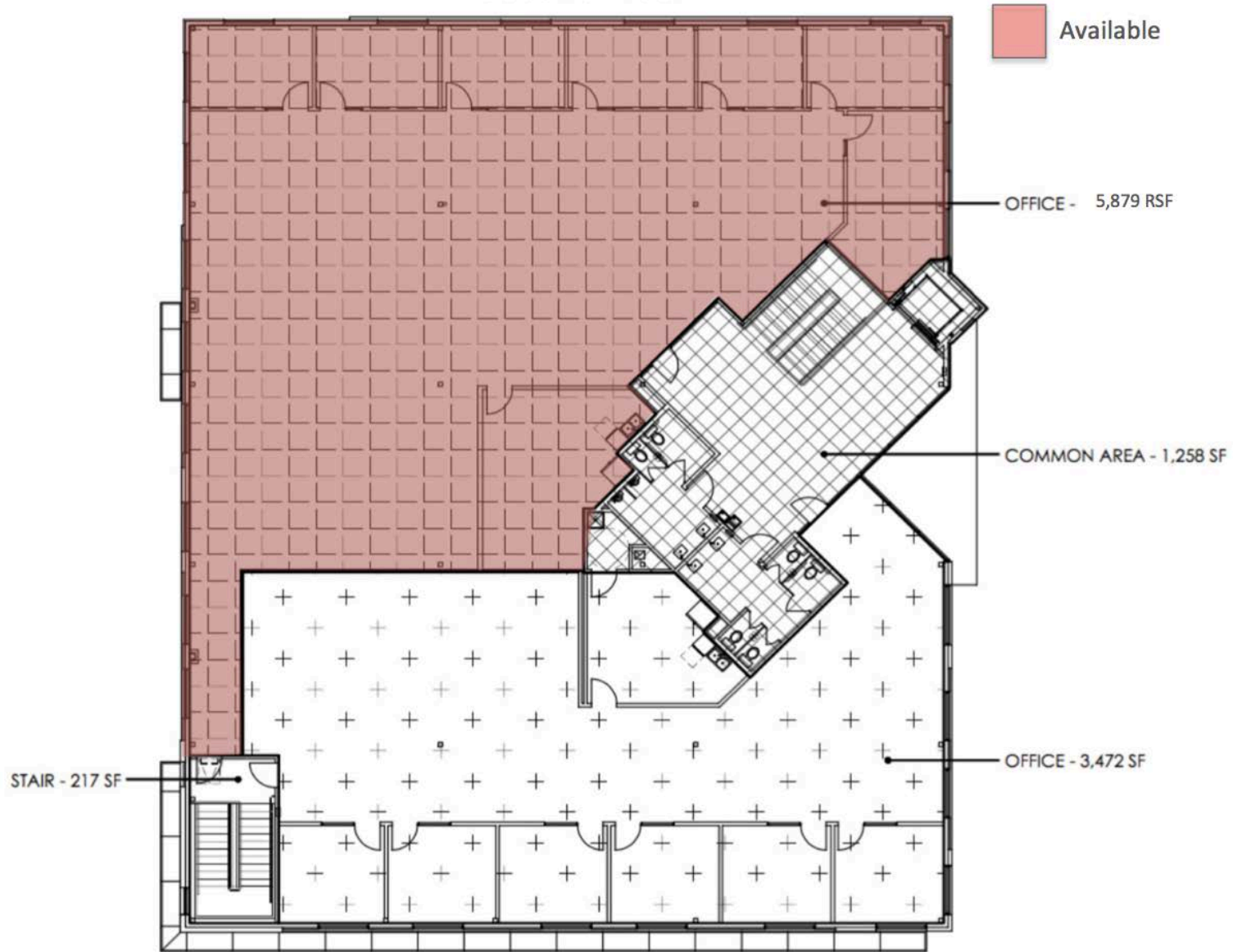
- Approximately 5,879 RSF located on the second floor

RATE

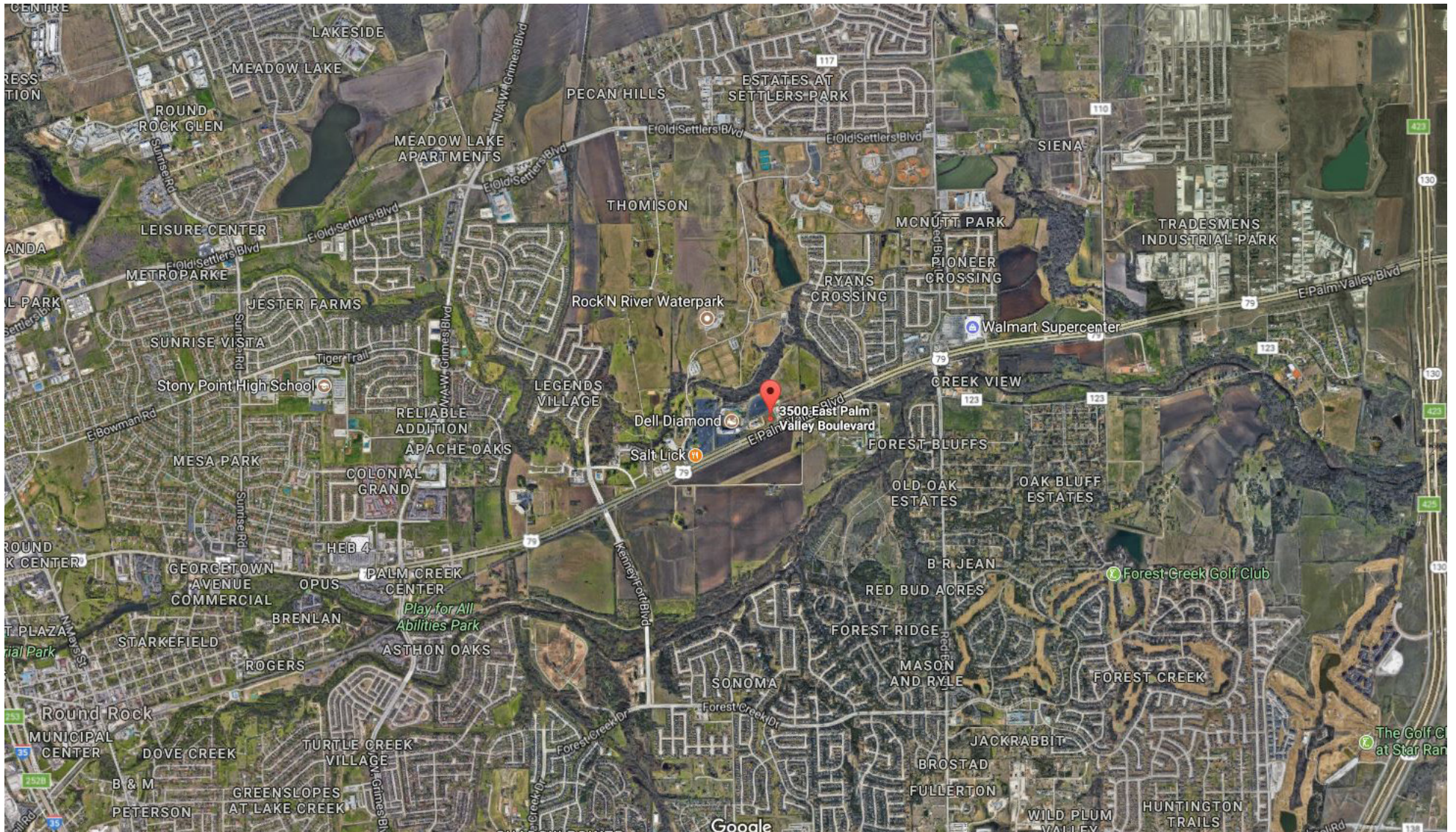
- Please call for current lease rates



Second Floor



FOR LEASE | 3500 EAST PALM VALLEY BOULEVARED, ROUND ROCK, TX 78665



5121 Bee Cave Rd., Ste. 207 Austin, TX 78746

www.carrdevelopment.com

CARR
Development, Inc.

