

CHASE PROFESSIONAL SUITES

EAST COUNTY MEDICAL/OFFICE SPACE FOR LEASE



Location

250 East Chase Avenue
El Cajon, CA 92020

Availability

Medical - 4,875-5,500 SF Available

Highlights

- Desirable Helix Foothills location
- Proximate to I-8 and Hwy. 67
- 5,500 SF, 1 Story Medical/Office Building
- 5:1,000 SF Parking Ratio
- Monument Signage available

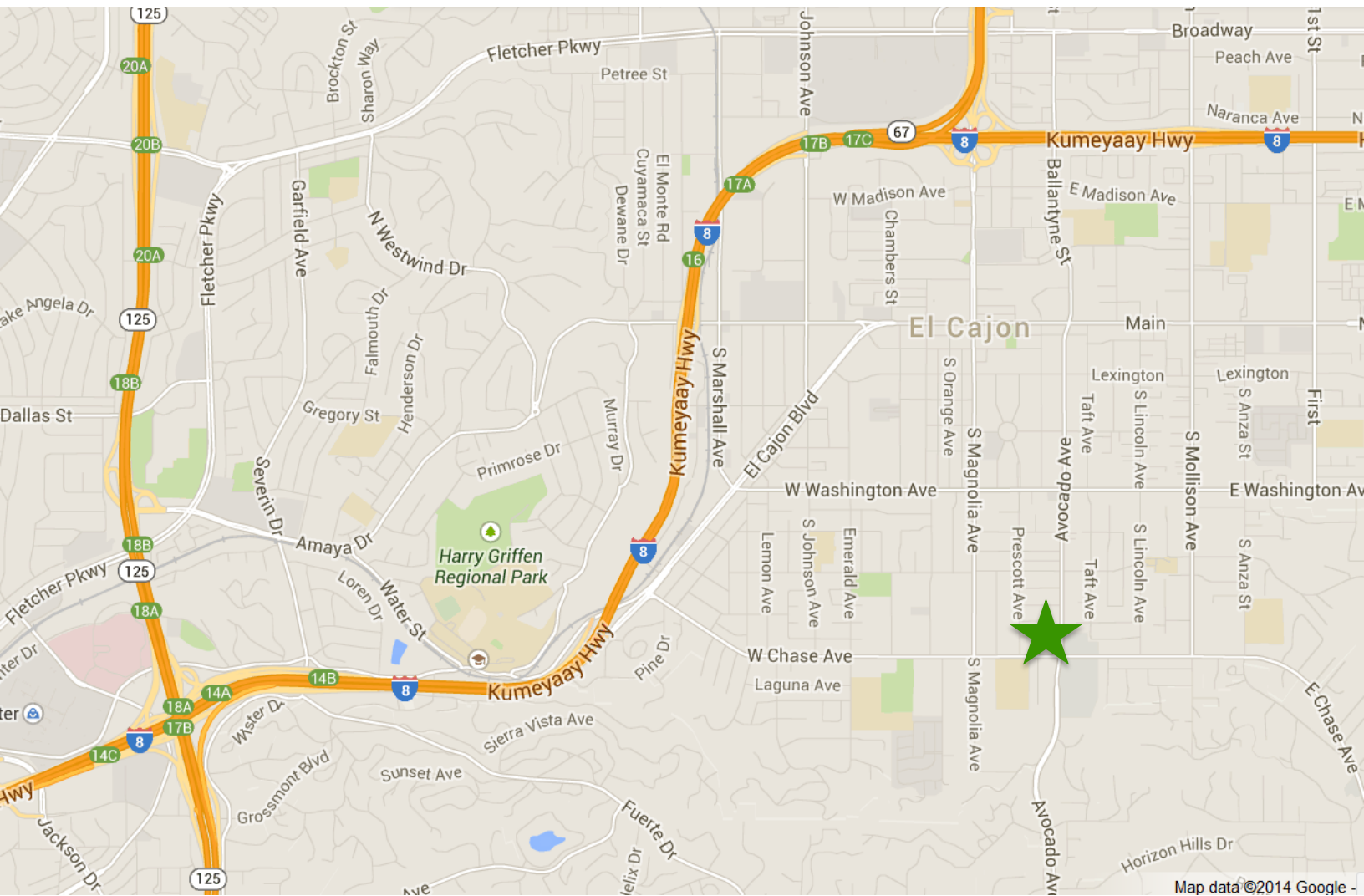
Contact

Kyle Clark - Senior Director
619.577.4558
kclark@theheritagegroup.com
BRE # 00367784

Dan McCarthy - Senior Director
619.577.4557
dmccarthy@theheritagegroup.com
BRE # 00928868

EAST COUNTY MEDICAL SPACE FOR LEASE

Chase Professional Suites 250 East Chase Avenue, El Cajon, CA 92020



For More Information

Kyle Clark
BRE #00367784

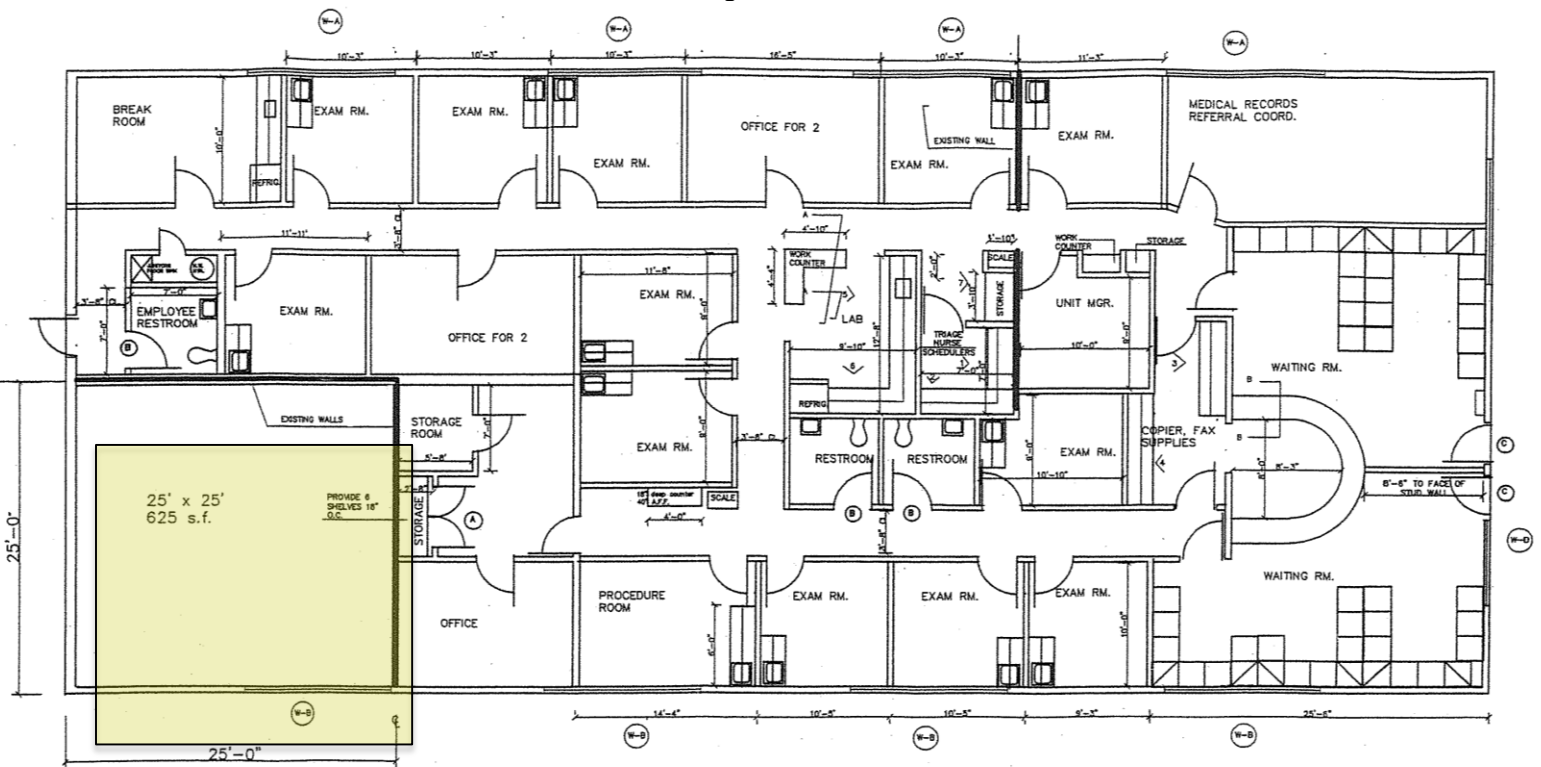
619.577.4558
kclark@theheritagegroup.com

Dan McCarthy
BRE # 00928868

619.577.4557
dmccarthy@theheritagegroup.com

EAST COUNTY MEDICAL SPACE FOR LEASE

Chase Professional Suites 250 East Chase Avenue, El Cajon, CA 92020



FLOOR PLAN
1/8" = 1' 0"
1/14/08

1st Floor Plan:
4,875 without 625 SF corner office
5,500 SF Full Floor Available



For More Information

Kyle Clark
BRE #00367784

619.577.4558
kclark@theheritagegroup.com

Dan McCarthy
BRE # 00928868

619.577.4557
dmccarthy@theheritagegroup.com