

COMMERCIAL CORNER

NW Corner Of 120th Avenue & Tower Road, Commerce City, CO 80022

FOR SALE



SALE PRICE **CONTACT BROKER**

PROPERTY OVERVIEW
Cutler Farm Subdivision

OFFERING SUMMARY

Lot Size: 6.37 Acres
Market: Denver
Price / SF: \$4.75

PROPERTY HIGHLIGHTS

- Asking \$4.75/SF - Bulk Sale
- Pricing adjusted for smaller parcel sale(s)
- Growing trade area
- Build to suit possible
- Signalized intersection
- Near "Hot" Reunion master planned community neighborhood with over 1,500 families
- Near E-470 exit at 120th Avenue toll interchange
- 15 minute drive to DIA
- Zoning - PUD
- Part of master planned neighborhood subdivision ready for new housing construction

DEMOGRAPHICS

	1 MILE	5 MILES	10 MILES
Total Households	108	6,764	42,187
Total Population	324	20,316	126,431
Average HH Income	\$99,979	\$94,062	\$76,459

JEFFREY HIRSCHFELD, ED.D.
303.454.5425
jhirschfeld@antonoff.com

ALEC SOWERS
303.454.5423
asowers@antonoff.com

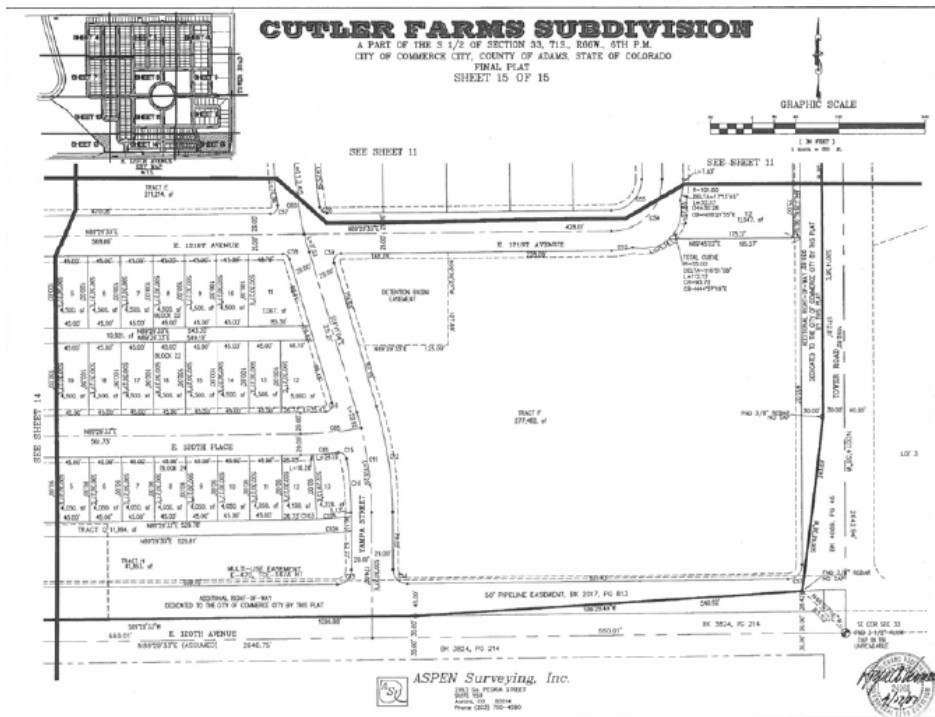
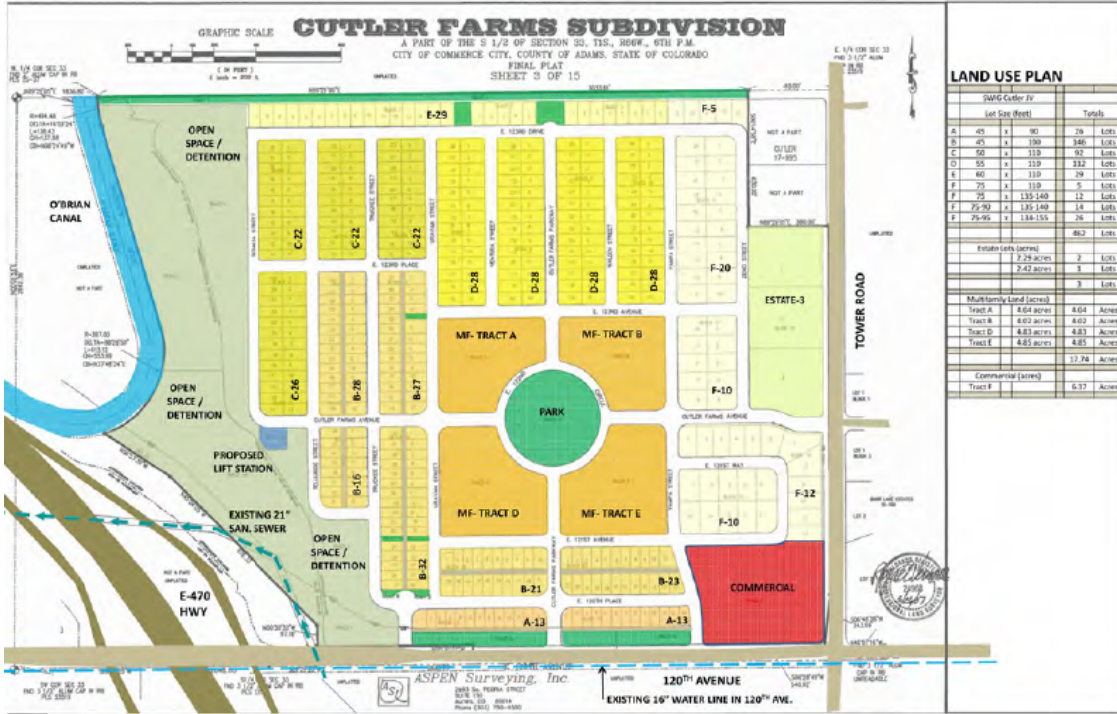


The information above was obtained from sources we deem reliable; however, no warranty or representation, expressed or implied, is made as to the accuracy of the information contained herein. Any reliance on this information is solely at your own risk.

CUTLER FARMS SUBDIVISION

NW Corner Of 120th Avenue & Tower Road, Commerce City, CO 80022

FOR SALE



JEFFREY HIRSCHFELD, ED.D.

303.454.5425

jhirschfeld@antonoff.com

The information above was obtained from sources we deem reliable; however, no warranty or representation, expressed or implied, is made as to the accuracy of the information contained herein. Any reliance on this information is solely at your own risk.

ALEC SOWERS

303.454.5423

asowers@antonoff.com

ANTONOFF & CO. BROKERAGE INC.

CUTLER FARMS SUBDIVISION

NW Corner Of 120th Avenue & Tower Road, Commerce City, CO 80022

FOR SALE



JEFFREY HIRSCHFELD, ED.D.

303.454.5425

jhirschfeld@antonoff.com

The information above was obtained from sources we deem reliable; however, no warranty or representation, expressed or implied, is made as to the accuracy of the information contained herein. Any reliance on this information is solely at your own risk.

ALEC SOWERS

303.454.5423

asowers@antonoff.com

**ANTONOFF
& CO. BROKERAGE INC.**