

5656 3RD STREET NE

UP TO 5,646 RSF OF OFFICE SPACE FOR LEASE

WASHINGTON, D.C.

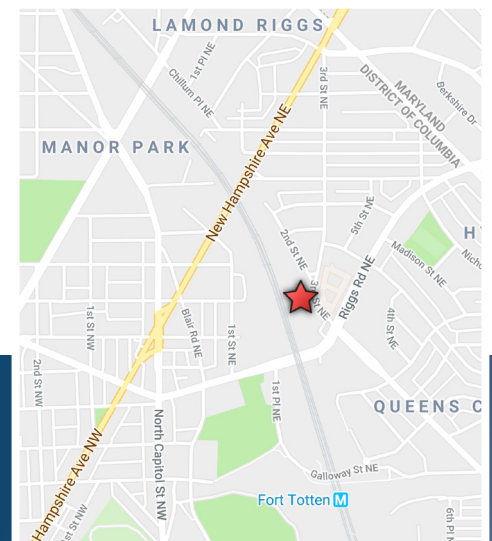
BUILDING FEATURES

- + Private entrance
- + Reception area
- + Four Private Offices with large, open work space.
- + Kitchen
- + Parking spaces for four vehicles
- + Minutes from Fort Totten Metro Station



PLUG & PLAY SPACE IN WASHINGTON, D.C.

- + Turn Key, Fully Demised
- + \$27/SF, Full Service Gross
- + 3-5 Year Term



CBRE

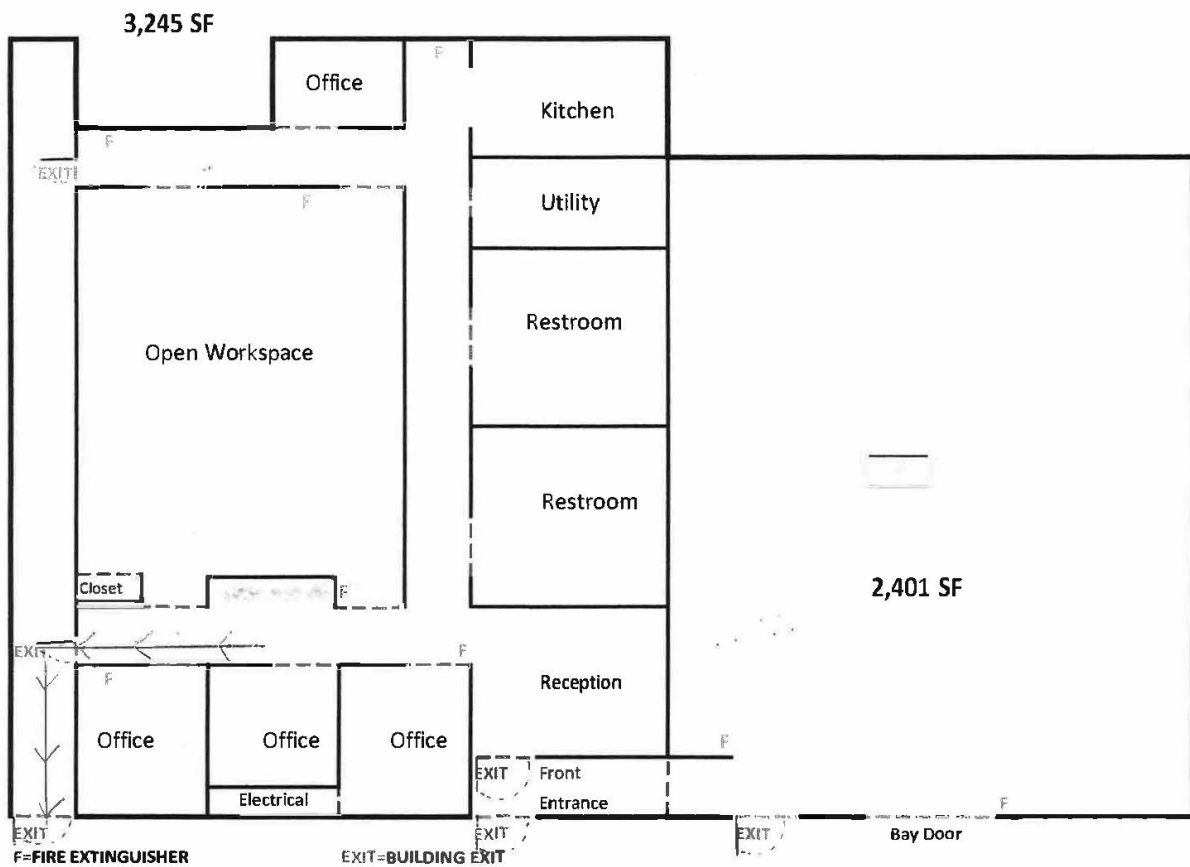
For More Information:

ADINA GITTENS-SMITH
+ 1 202 585 5668 | Adina.GittensSmith@cbre.com

TURN KEY SPACE IN NORTHEAST D.C.

SPACE DETAILS

- + Up to 5,646 RSF
- + Four Private Offices
- + Open Workspace
- + Kitchen



© 2019 CBRE, Inc. This information has been obtained from sources believed reliable. We have not verified it and make no guarantee, warranty or representation about it. Any projections, opinions, assumptions or estimates used are for example only and do not represent the current or future performance of the property. You and your advisors should conduct a careful, independent investigation of the property to determine to your satisfaction the suitability of the property for your needs. CBRE and the CBRE logo are service marks of CBRE, Inc. and/or its affiliated or related companies in the United States and other countries. All other marks displayed on this document are the property of their respective owners. Photos herein are the property of their respective owners and use of these images without the express written consent of the owner is prohibited.

CBRE

ADINA GITTENS-SMITH | + 1 202 585 5668 | Adina.GittensSmith@cbre.com