

# 1909-1911 Central Street

Evanston, IL | 60201

## For Lease

Retail Property



- ▶ 1909 Central: ±1,213 SF available
- ▶ 1911 Central: ±1,050 SF available
- ▶ Large storefront windows with great natural light
- ▶ Frontage on Central Street
- ▶ Basement space included at no extra cost
- ▶ Across the street from the Central Avenue Metra Station
- ▶ Area tenants include Coast Sushi, The Spice Room, United States Postal Service, Chase Bank, Starbucks, JC Licht, Evanston Art Center, Dunkin', and more

### LEASE RATE:

\$25.00 SF/yr (NNN)

### DEMOGRAPHICS

	.25 MILE	.5 MILE	1 MILE
Estimated Population	1,666	5,546	19,866
Adj. Daytime Demographics	1,130	3,867	16,726
Estimated Households	628	2,056	7,284
Estimated Average Household Income	\$235,362	\$198,023	\$206,484

### CHUCK WHITLOCK

312.275.3133  
chuck@baumrealty.com



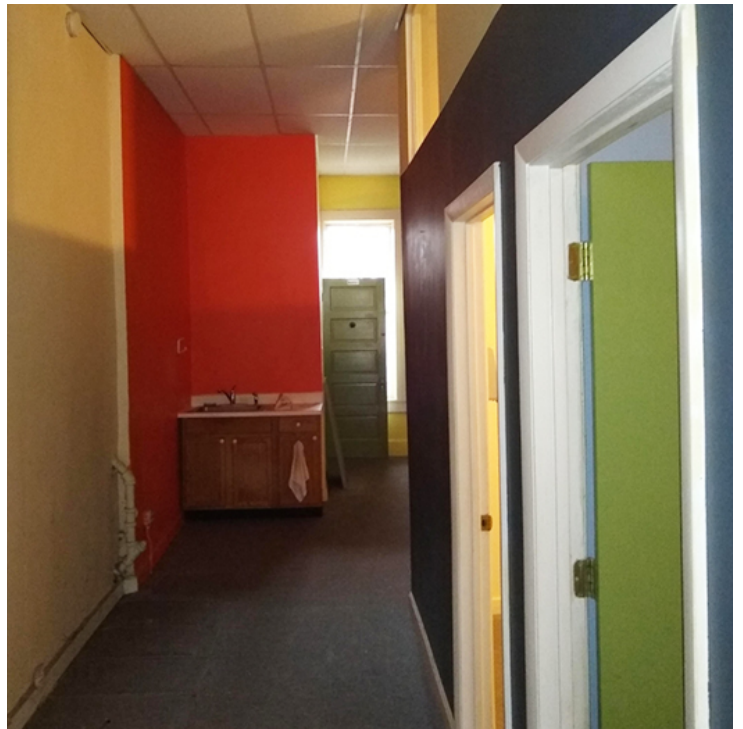
© 2020 All information supplied is from sources deemed reliable and is furnished subject to errors, omissions, modifications, removal of the listing from sale or lease, and to any listing conditions, including the rates and manner of payment of commissions for particular offerings, the terms of which are available to principals or duly licensed brokers. Any square footage dimensions set forth are approximate.

# 1909-1911 Central Street

Evanston, IL | 60201

# For Lease

Retail Property



**CHUCK WHITLOCK**  
312.275.3133  
chuck@baumrealty.com



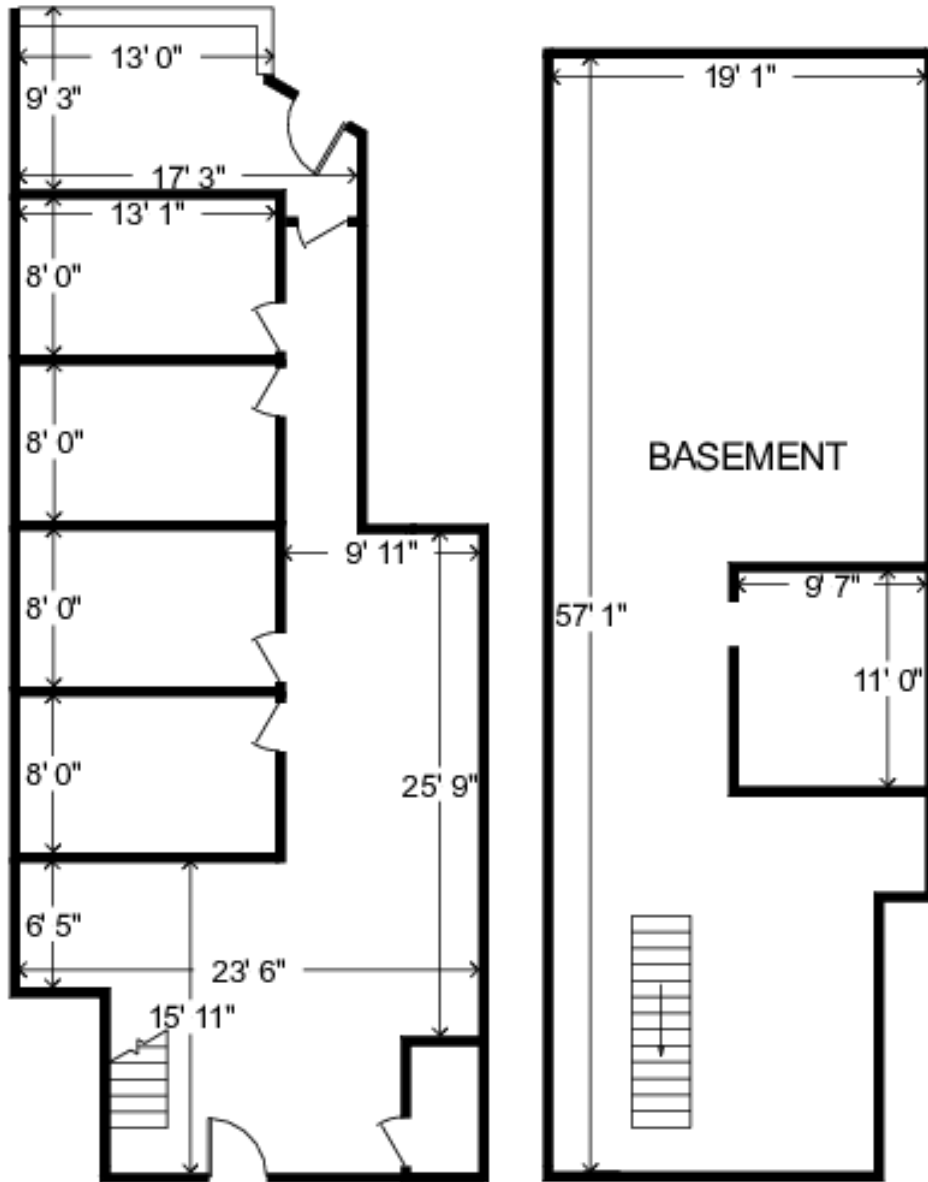
© 2020 All information supplied is from sources deemed reliable and is furnished subject to errors, omissions, modifications, removal of the listing from sale or lease, and to any listing conditions, including the rates and manner of payment of commissions for particular offerings, the terms of which are available to principals or duly licensed brokers. Any square footage dimensions set forth are approximate.

# 1909-1911 Central Street

Evanston, IL | 60201

# For Lease

Retail Property



1909 Central Street - Floor Plan

**CHUCK WHITLOCK**

312.275.3133

chuck@baumrealty.com



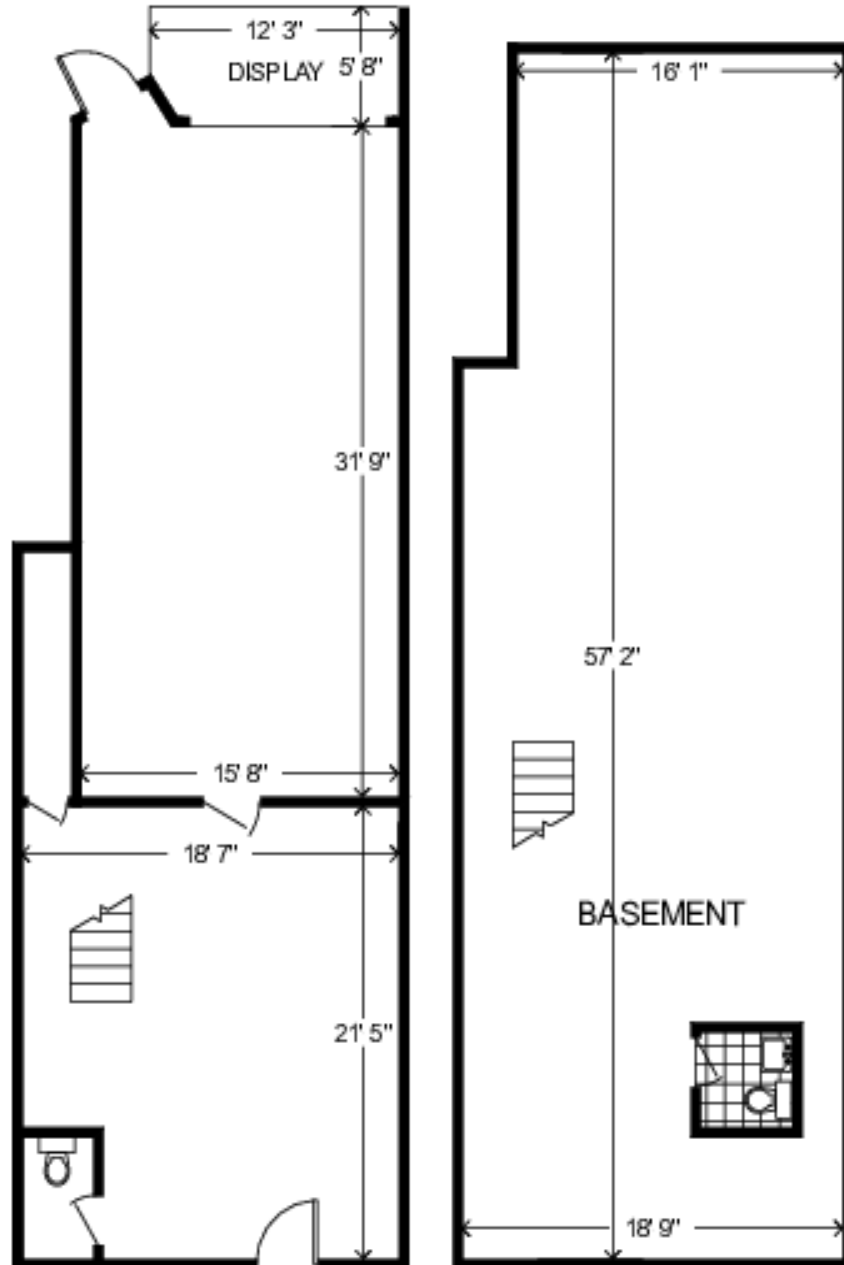
© 2020 All information supplied is from sources deemed reliable and is furnished subject to errors, omissions, modifications, removal of the listing from sale or lease, and to any listing conditions, including the rates and manner of payment of commissions for particular offerings, the terms of which are available to principals or duly licensed brokers. Any square footage dimensions set forth are approximate.

# 1909-1911 Central Street

Evanston, IL | 60201

# For Lease

Retail Property



1911 Central Street - Floor Plan

**CHUCK WHITLOCK**

312.275.3133

chuck@baumrealty.com



© 2020 All information supplied is from sources deemed reliable and is furnished subject to errors, omissions, modifications, removal of the listing from sale or lease, and to any listing conditions, including the rates and manner of payment of commissions for particular offerings, the terms of which are available to principals or duly licensed brokers. Any square footage dimensions set forth are approximate.



1909-1911 Central Street  
Evanston, IL 60201

DUNKIN'

HAPPY HUSKY  
BAKERY

2608 Green Bay Rd

Leonidas Cafe

Northshore Pilates

EVANSTON ART  
CENTER

Mustard's Last Stand

Central Street  
Metra

Beth's Little  
Bake Shop

TEN MILE HOUSE

COAST  
SUSHI & SASHIMI

DOB  
small batch  
DONUTS



Tags Bakery  
BACKLOT  
coffee

PAPER SOURCE

verizon

Foodstuffs



Google

Map data ©2020 Google Imagery ©2020, Maxar Technologies, U.S. Geological Survey, USDA Farm Service Agency



© 2020 All information supplied is from sources deemed reliable and is furnished subject to errors, omissions, modifications, removal of the listing from sale or lease, and to any listing conditions, including the rates and manner of payment of commissions for particular offerings, the terms of which are available to principals or duly licensed brokers. Any square footage dimensions set forth are approximate.

