



**AVISON
YOUNG**



**TWO INDUSTRIAL BUILDINGS
FOR LEASE**

**265 WEST RADIO ROAD
AND
285 WEST RADIO ROAD
PALM SPRINGS, CA**

 **BEST
MANAGED
COMPANIES**



265 W RADIO ROAD and 285 W RADIO ROAD PALM SPRINGS, CA

Avison Young's Automotive Properties Group is please to present an opportunity to lease one or both industrial buildings in Palm Springs, CA. The buildings can be leased as a portfolio or on a one-off basis.

The buildings are currently owner occupied and can be made available withing 30 days. The buildings are currently being used for automotive customization and service, vehicle storage and auto body repairs. The buildings are M1 zoned (Service & Manufacturing Zone) which provides for a wide variety of uses.

DEMOGRAPHICS

2018 Total Population

2018 Median Household Income

1 Mile

7,147

\$52,430

3 Mile

22,941

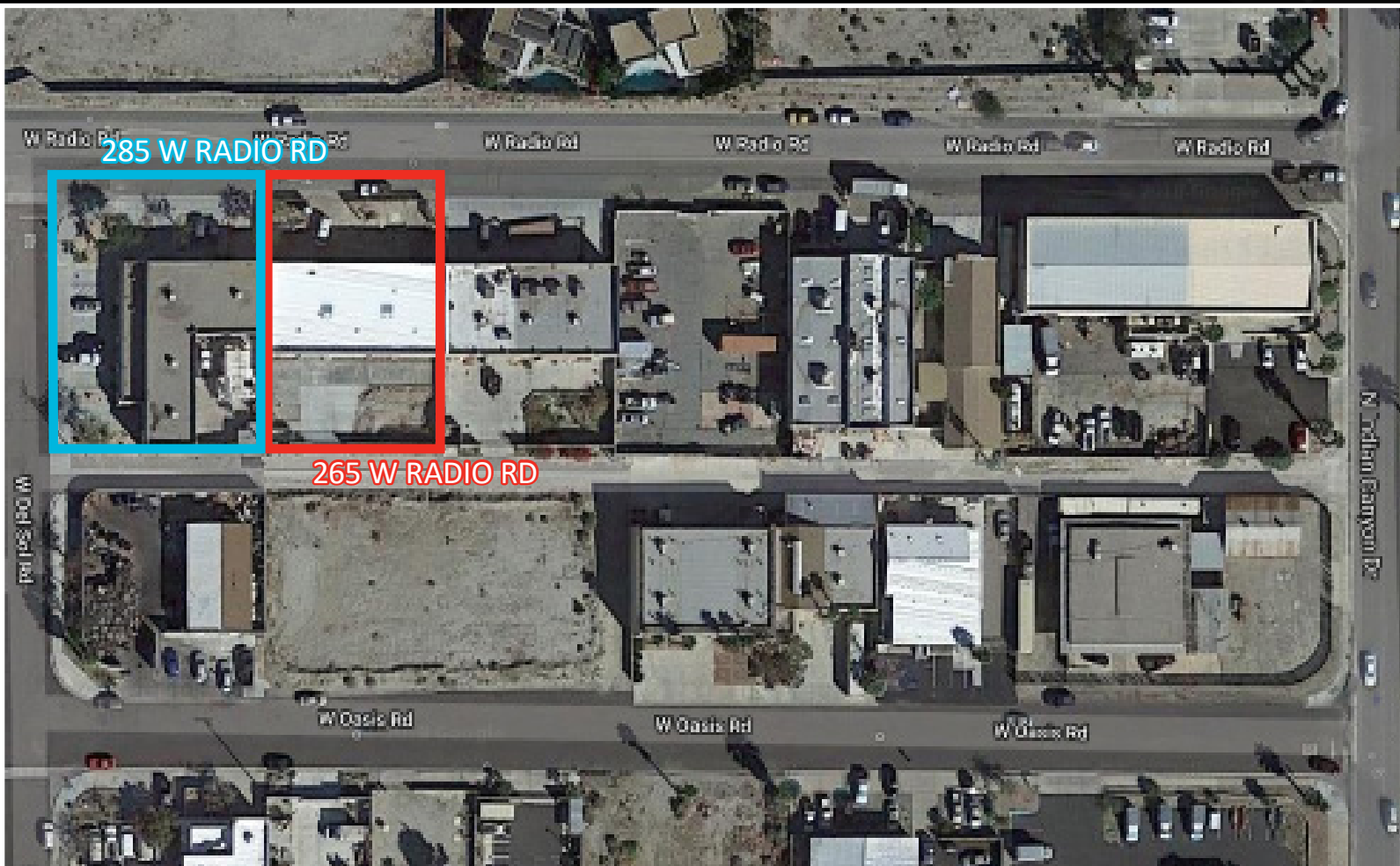
\$52,604

5 Mile

58,446

\$49,221

AERIAL





265 W. RADIO ROAD | PALM SPRINGS, CA

Building Area: 5,000 SF

Lease: \$1.25 SF NNN

Property Highlights:

- M1 Zoned
- Recently finished construction
May 2018
- Roll up door
- Freshly paved yard
- Restroom
- 400 AMP





285 W. RADIO ROAD | PALM SPRINGS, CA



Building Area: 7,500 SF

Lease: \$1.25 SF NNN

Property Highlights:

- M1 Zoned
- 4 Office spaces, 1 restroom
- Paved yard
- 4 Roll up doors
- AQMD license for body work



LOCATOR MAP



AVISON YOUNG'S AUTOMOTIVE PROPERTIES GROUP

Avison Young's Automotive Properties Group (APG) is a fully dedicated service line within Avison Young that specializes in the automotive real estate needs of investors, developers, manufacturers, and franchisees on a national basis. Headquartered in Los Angeles, California, APG provides automotive specific expert knowledge in marketing research, investments, leasing, management and valuation. APG consistently utilizes the global network and local market knowledge of Avison Young's dedicated real estate professionals to ensure our clients make informed, effective automotive-related real estate decisions.

FOR MORE INFORMATION PLEASE CONTACT:

Jodi V. Meade, CRX, CSM
Principal
National Director - Automotive Properties Group
License: 01126082
213-471-1060
jodi.meade@avisonyoung.com

Jay Simmers
Associate
Automotive Properties Group
License: 02062448
213-618-3822
jay.simmers@avisonyoung.com

**AVISON
YOUNG**

The above statement was made based upon information furnished to us by the owner or from sources we believe are reliable. While we do not doubt its accuracy, we have not verified it and we do not make any guarantee, warranty or representation about it. The property offered is subject to prior sale, lease, change of price or withdrawal from the market without notice.

CANADA
**BEST
MANAGED
COMPANIES**