

New Ownership

**BEST IN
CLASS AT
BRIDGEWATER**

CenterPointe IV

1140 Route 22 East, Bridgewater, NJ

CenterPointe

AT BRIDGEWATER

1130, 1140, 1150, 1160 Route 22 East, Bridgewater, NJ

PARK FEATURES:

- Four (4) building Class A office park on 20.78 acres
- Corporate campus environment provides expansion potential
- Buildings offer highly efficient floor plates
- Parking ratio: 4/1,000 SF

ON-SITE AMENITIES:

- Full service café
- Outdoor seating area with WIFI
- Market fresh vending
- Conference center with WIFI
- Fitness facilities with showers and lockers
- On-site property management office

LOCATION:

- Located on Route 22 East with convenient access to I-287, I-78 and Routes 202, 206
- Close to numerous area restaurants, hotels and shopping



CenterPointe I

1130 Route 22 East, Bridgewater, NJ

FULLY LEASED



CenterPointe II

1160 Route 22 East, Bridgewater, NJ



CenterPointe III

1150 Route 22 East, Bridgewater, NJ

EXCLUSIVE LEASING AGENT:



For more information, please contact:

Susan Mason

+1 973 829 4697

susan.mason@am.jll.com

Robert Ryan

+1 973 829 4717

rs.ryan@am.jll.com

OWNED AND MANAGED BY:



Visit our website for more info:

www.centerpointeatbridgewater.com

CenterPointe

AT BRIDGEWATER

www.centerpointeatbridgewater.com

AVAILABLE SPACE

CenterPointe II 1160 Route 22 East, Bridgewater, NJ



- 1st floor – 5,123 RSF
- 3rd floor – 11,723 RSF

CenterPointe III 1150 Route 22 East, Bridgewater, NJ



- 1st floor – 6,893 RSF
- 3rd floor – 16,126 RSF

CenterPointe IV 1140 Route 22 East, Bridgewater, NJ



- 1st floor – 6,451 RSF
- 2nd floor – 10,135 RSF
- 3rd floor – 11,291 RSF

For more information, please contact:

Susan Mason
+1 973 829 4697

susan.mason@am.jll.com

Robert Ryan
+1 973 829 4717

rs.ryan@am.jll.com



CenterPointe

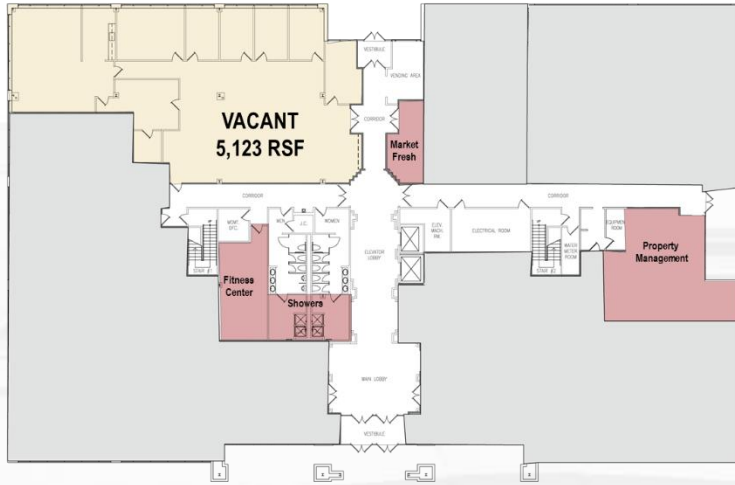
AT BRIDGEWATER

www.centerpointeatbridgewater.com

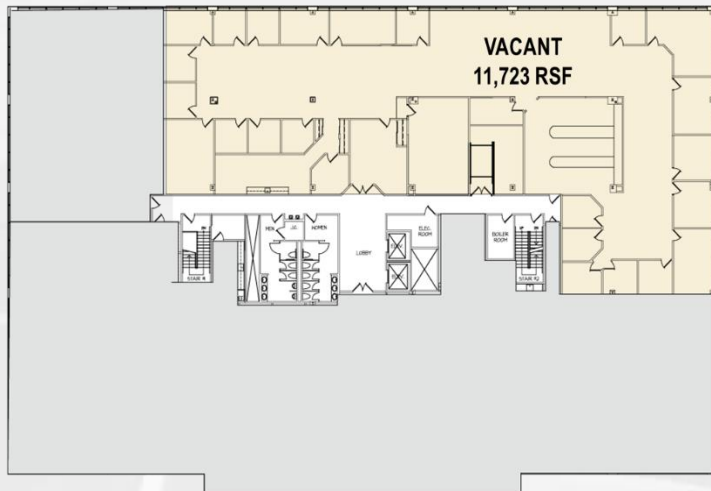
FLOOR PLANS

CenterPointe II - 1160 Route 22 East

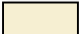
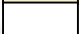


1st Floor
5,123 RSF



3rd Floor
11,723 RSF



KEY:

	VACANT
	COMMON AREA
	OCCUPIED
	AMENITY

For more information, please contact:

Susan Mason
+1 973 829 4697
susan.mason@amjll.com

Robert Ryan
+1 973 829 4717
rs.ryan@amjll.com



CenterPointe

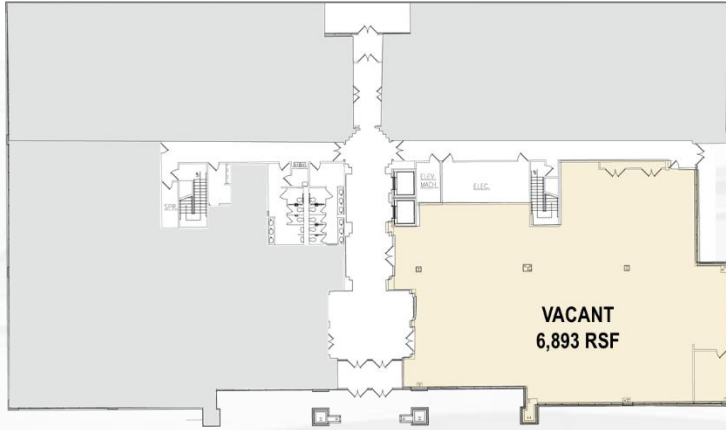
AT BRIDGEWATER

www.centerpointeatbridgewater.com

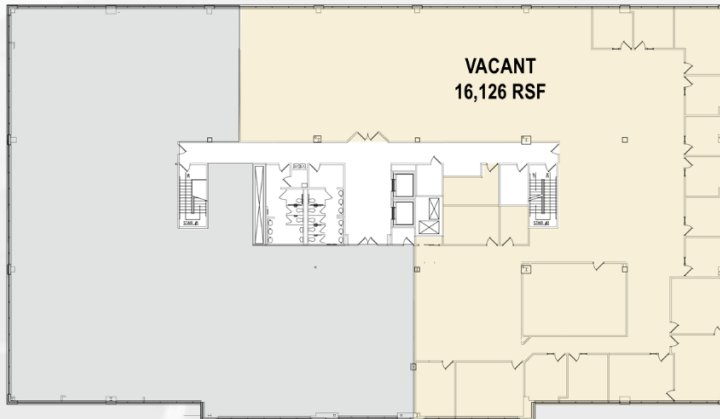
FLOOR PLANS

CenterPointe III - 1150 Route 22 East

1st Floor
6,893 RSF



3rd Floor
16,126 RSF



KEY:

	VACANT
	COMMON AREA
	OCCUPIED

For more information, please contact:

Susan Mason
+1 973 829 4697
susan.mason@am.jll.com

Robert Ryan
+1 973 829 4717
rs.ryan@am.jll.com



CenterPointe

AT BRIDGEWATER

www.centerpointeatbridgewater.com

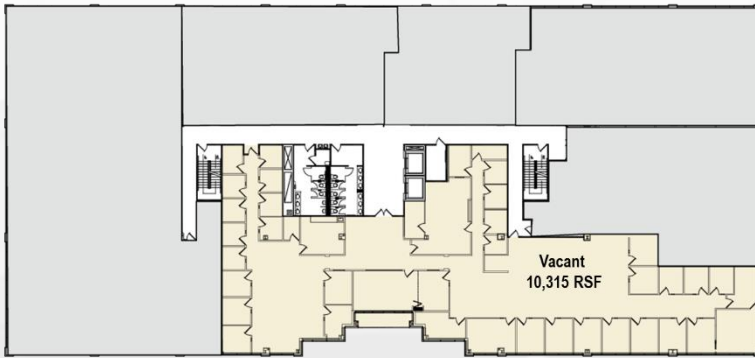
FLOOR PLANS

CenterPointe IV - 1140 Route 22 East

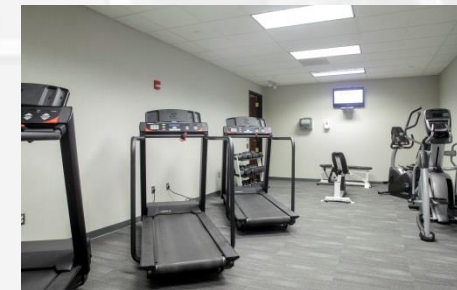
1st Floor
6,451 RSF



2nd Floor
10,135 RSF



3rd Floor
11,291 RSF



KEY:

	VACANT
	COMMON AREA
	OCCUPIED
	AMENITY

For more information, please contact:

Susan Mason
+1 973 829 4697
susan.mason@am.jll.com

Robert Ryan
+1 973 829 4717
rs.ryan@am.jll.com

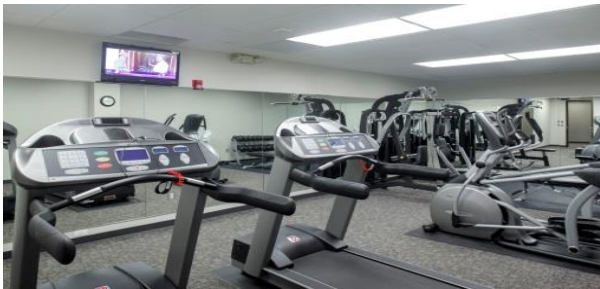


CenterPointe

AT BRIDGEWATER

www.centerpointeatbridgewater.com

AMENITIES



For more information, please contact:

Susan Mason
+1 973 829 4697
susan.mason@am.jll.com

Robert Ryan
+1 973 829 4717
rs.ryan@am.jll.com

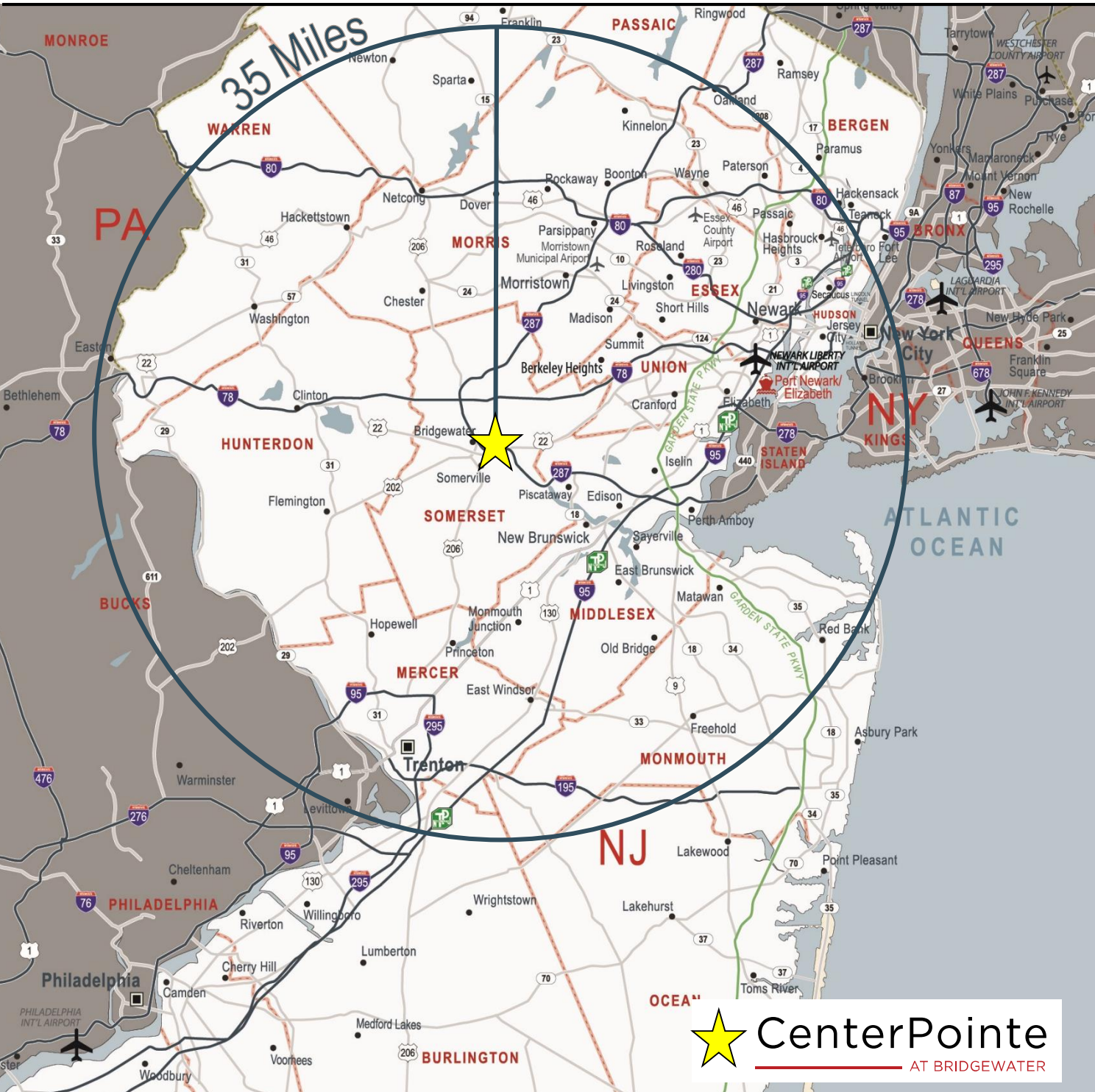


CenterPointe

AT BRIDGEWATER

www.centerpointeatbridgewater.com

REGIONAL MAP



 **CenterPointe**
AT BRIDGEWATER

For more information, please contact:

Susan Mason
+1 973 404 1492
susan.mason@am.jll.com

Robert Ryan
+1 973 404 1543
rs.ryan@am.jll.com



CenterPointe

AT BRIDGEWATER

www.centerpointeatbridgewater.com

LOCAL AMENITIES MAP



For more information, please contact:

Susan Mason
+1 973 829 4697
susan.mason@amjll.com

Robert Ryan
+1 973 829 4717
rs.ryan@amjll.com

