

METROPLEX

Retail & Office Complex

10201-10237 N 35th Ave
Phoenix, Arizona 85051

METROPLEX

LOCKSMITH

Family Dental
789-1131



For Sale: \$3,750,000

For Lease: \$10 - \$12.50/SF, NNN

NAIHorizon

Troy Giammarco

602 393 6693 • troy.giammarco@naihorizon.com

ALL INFORMATION FURNISHED REGARDING PROPERTY FOR SALE, RENTAL OR FINANCING IS FROM SOURCES DEEMED RELIABLE, BUT NO WARRANTY OR REPRESENTATION IS MADE TO THE ACCURACY THEREOF AND SAME IS SUBMITTED SUBJECT TO ERRORS, OMISSIONS, CHANGE OF PRICE, RENTAL OR OTHER CONDITIONS PRIOR TO SALE, LEASE OR FINANCING OR WITHDRAWAL WITHOUT NOTICE. NO LIABILITY OF ANY KIND IS TO BE IMPOSED ON THE BROKER HEREIN.

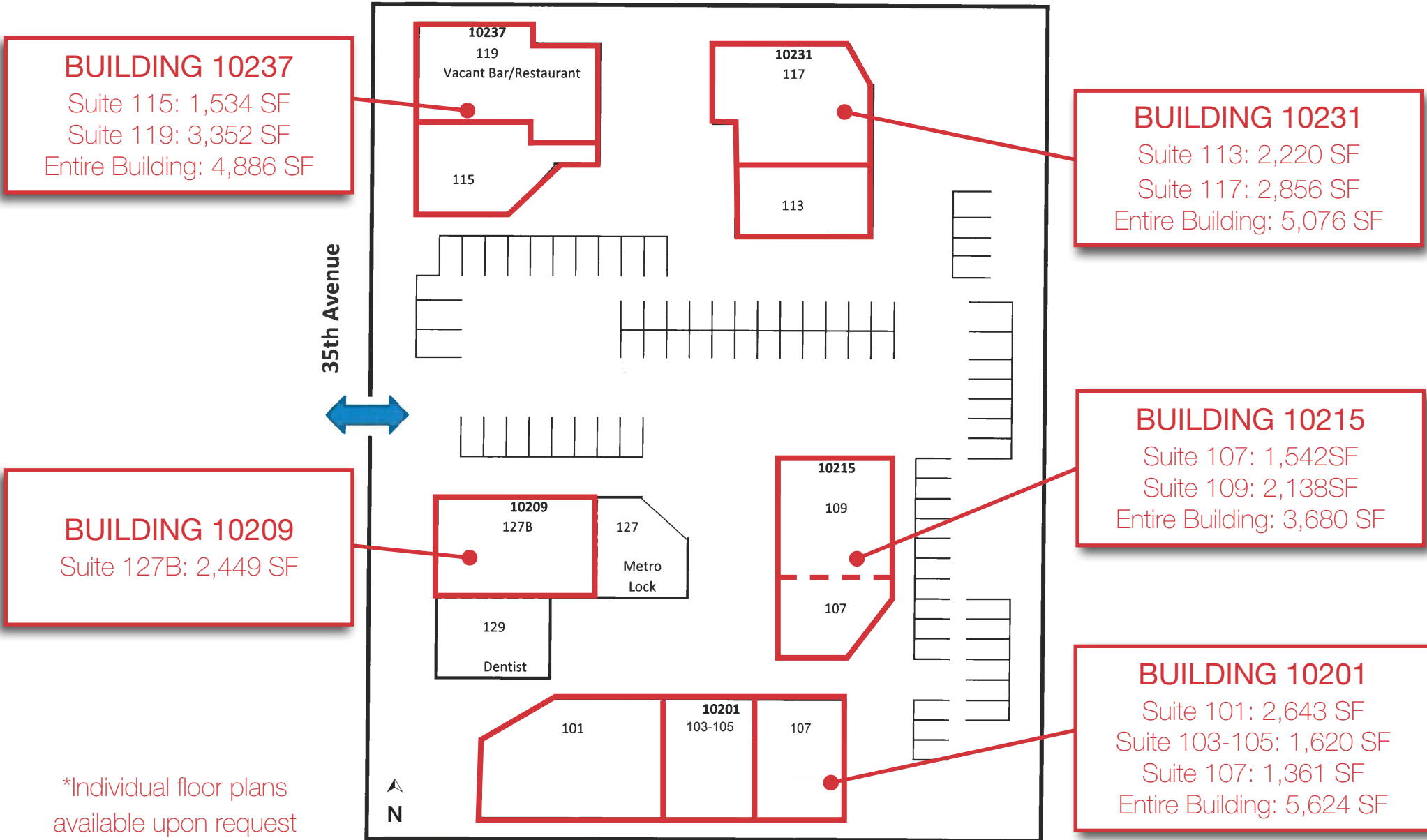
Property Features

- Block construction
- Convenient parking
- Nicely landscaped
- Suites available from 1,361-3,352 SF
- Whole buildings from 3,680-5,624 SF
- Good visibility
- Very busy Fry's Marketplace across 35th Ave
- Pylon signage on 35th Ave & Cheryl Dr
- Easy access
- Plentiful parking
- Area undergoing redevelopment; new shops and restaurants locating within a mile of site

SITE PLAN

For Lease

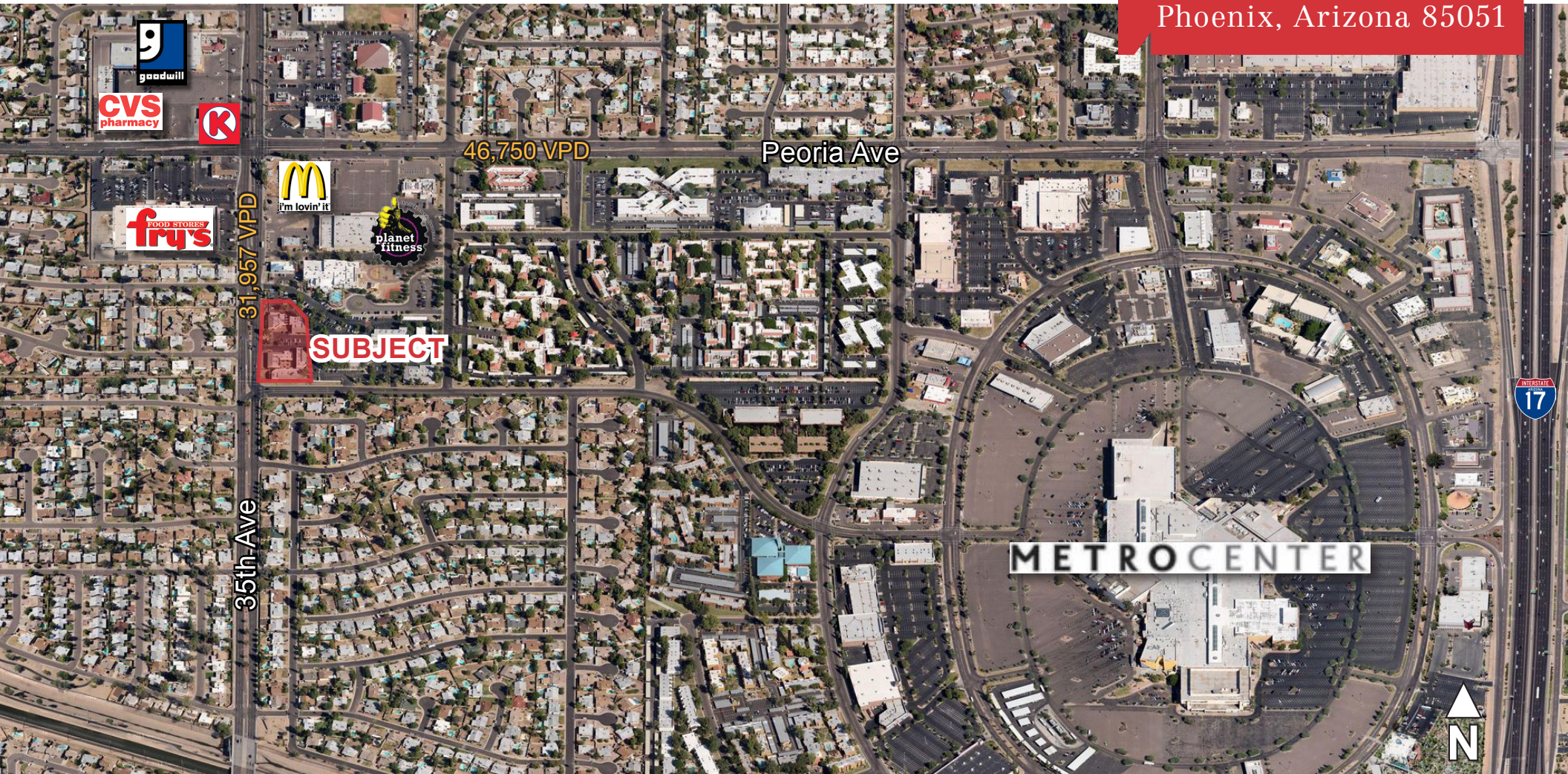
10201-10237 N 35th Ave
Phoenix, Arizona 85051



*Individual floor plans
available upon request

For Lease

10201-10237 N 35th Ave
Phoenix, Arizona 85051



Demographics

2019 Median Household Income
2019 Population
Total # of Employees

1 Mile

\$49,795
18,941
7,570

3 Mile

\$43,220
183,824
49,929

5 Mile

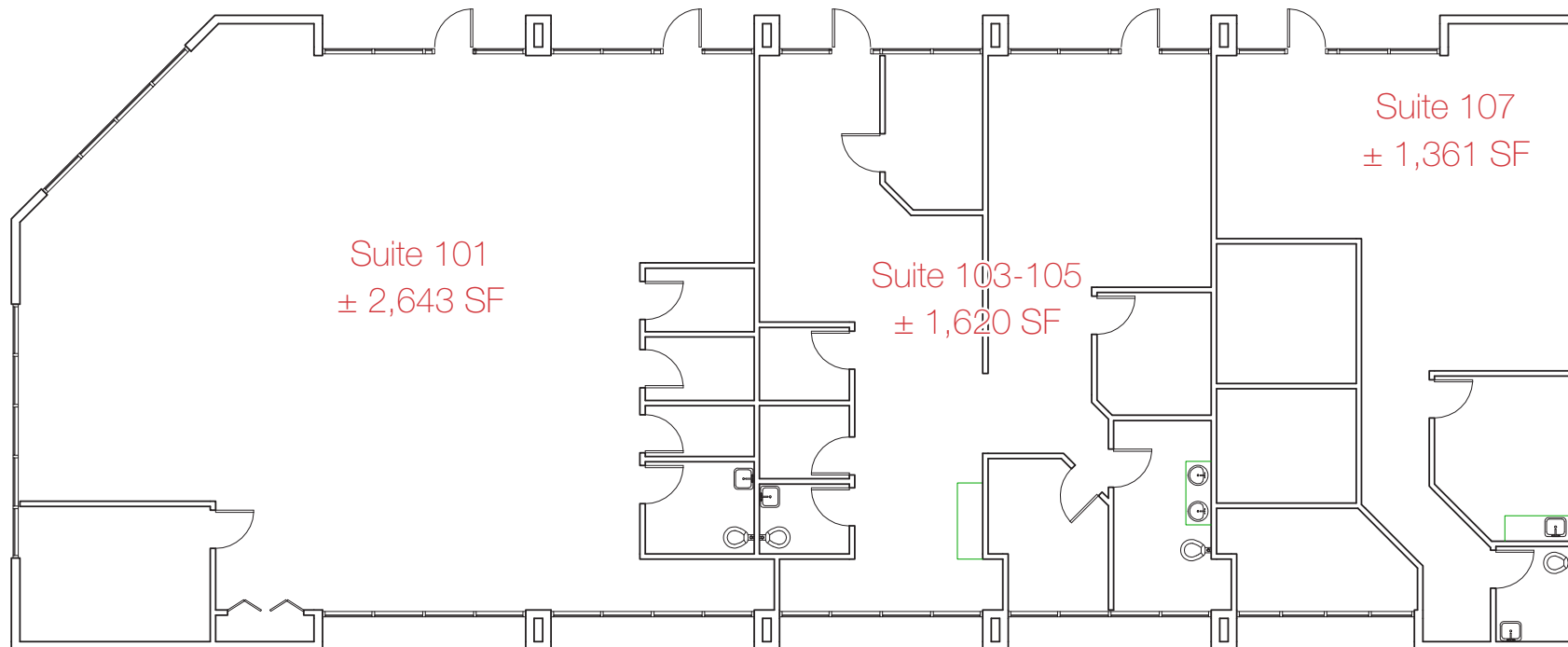
\$44,657
457,471
131,077

BLDG 10201

±5,624 SF

For Lease

10201-10237 N 35th Ave
Phoenix, Arizona 85051

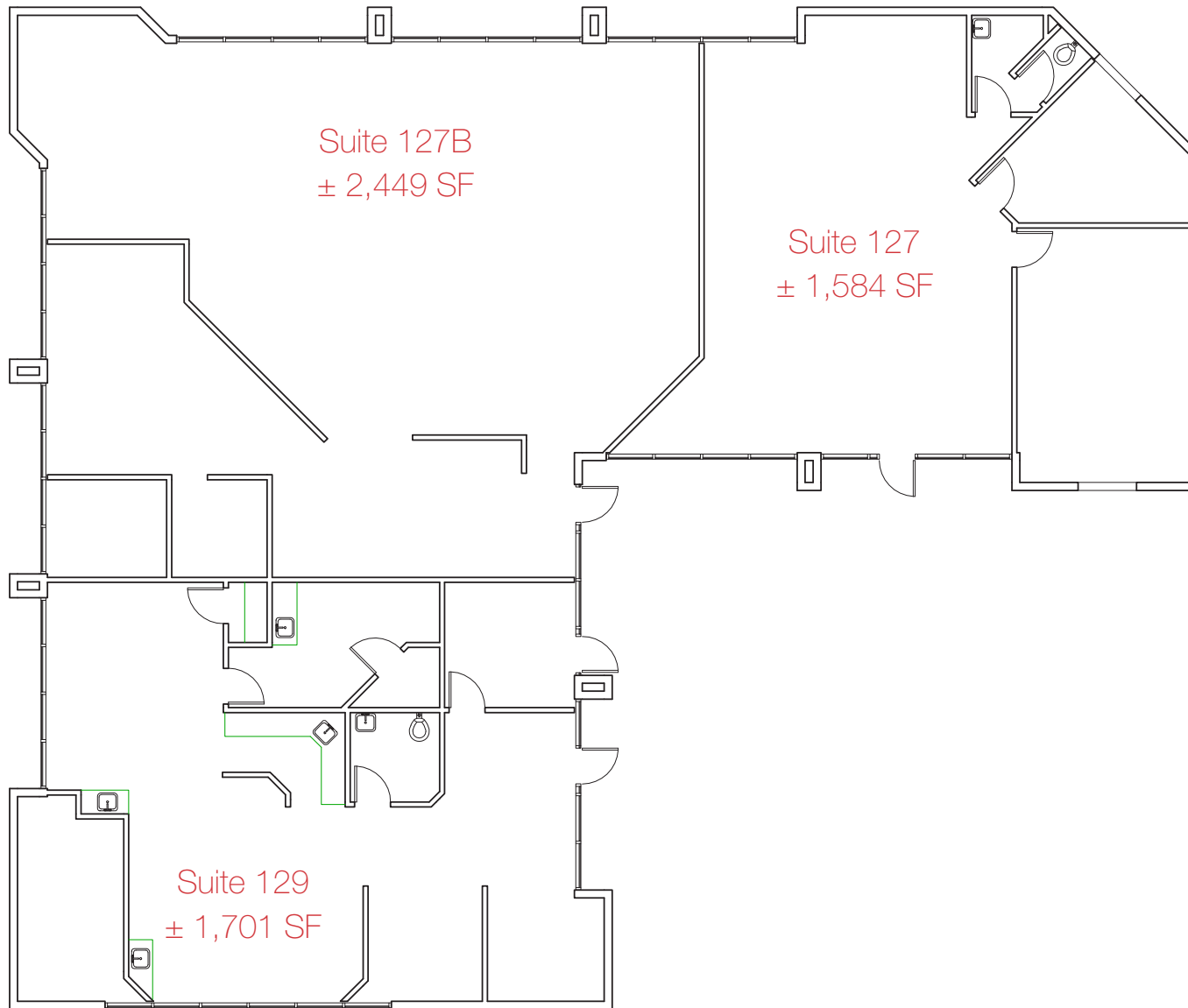


BLDG 10209

±5,734 SF

For Lease

10201-10237 N 35th Ave
Phoenix, Arizona 85051

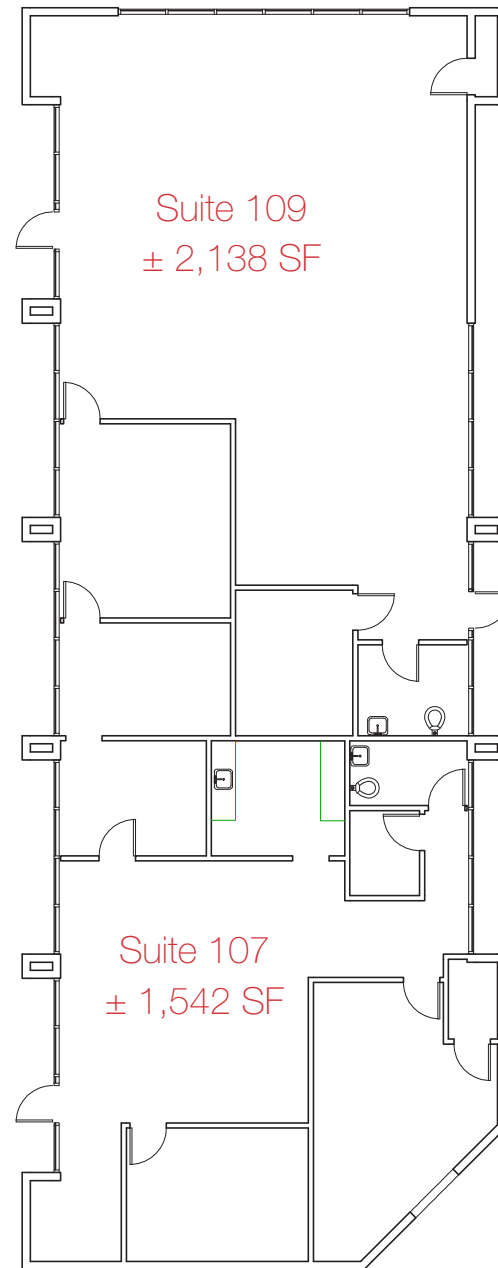


BLDG 10215

±3,680 SF

For Lease

10201-10237 N 35th Ave
Phoenix, Arizona 85051

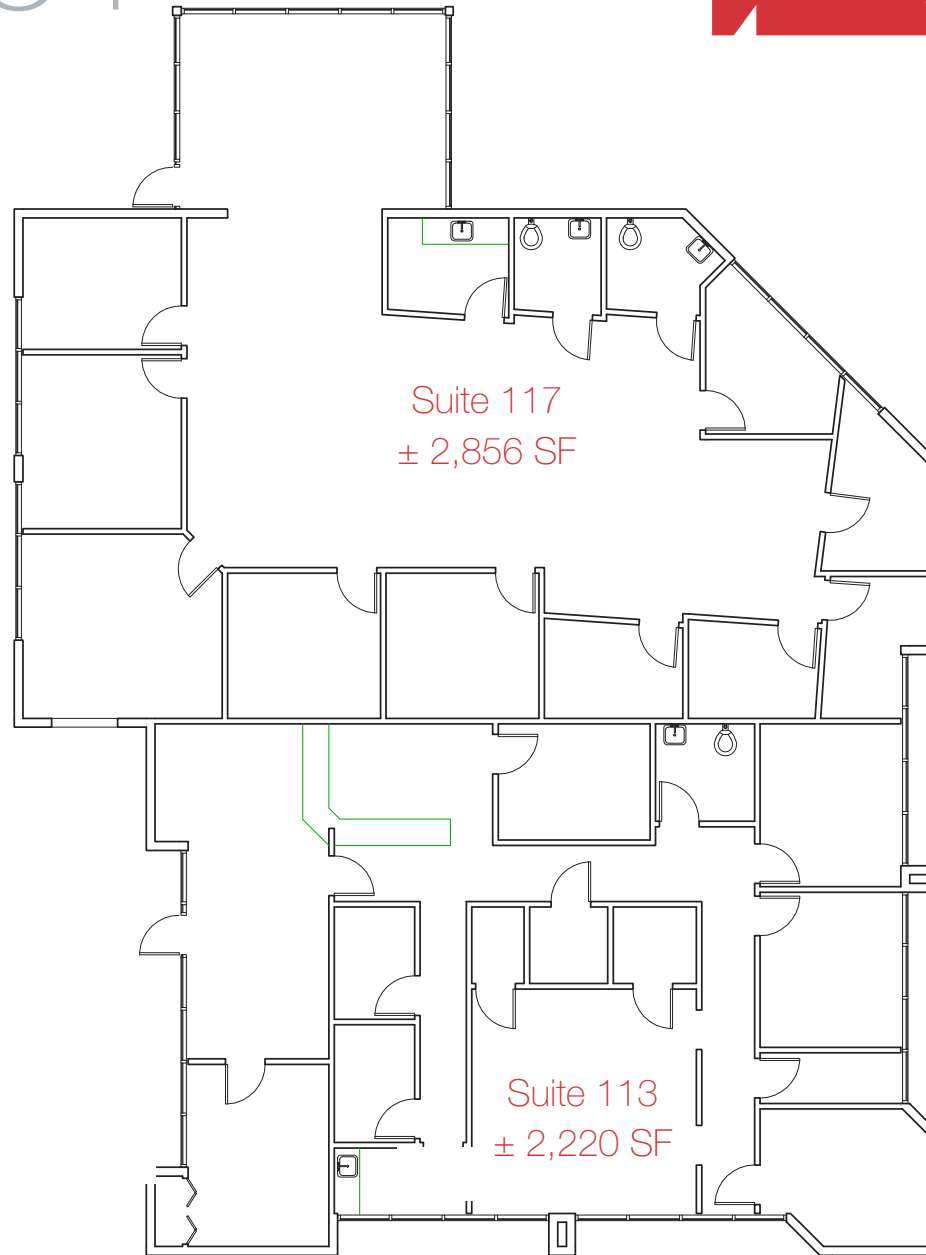


BLDG 10231

±5,076 SF

For Lease

10201-10237 N 35th Ave
Phoenix, Arizona 85051



Suite 117
± 2,856 SF

Suite 113
± 2,220 SF



BLDG 10237

±4,886 SF

For Lease

10201-10237 N 35th Ave
Phoenix, Arizona 85051

