

# TECH CENTER C

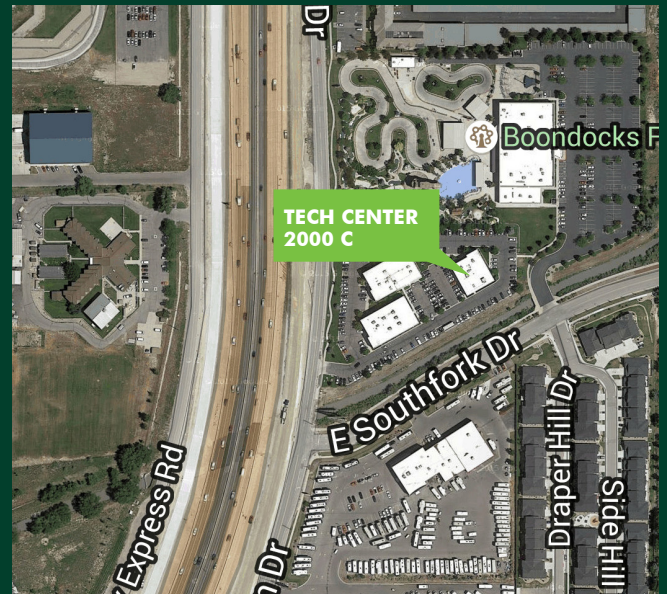
14193 SOUTH MINUTEMAN DRIVE,  
DRAPER, UT 84020



## OFFICE SPACE

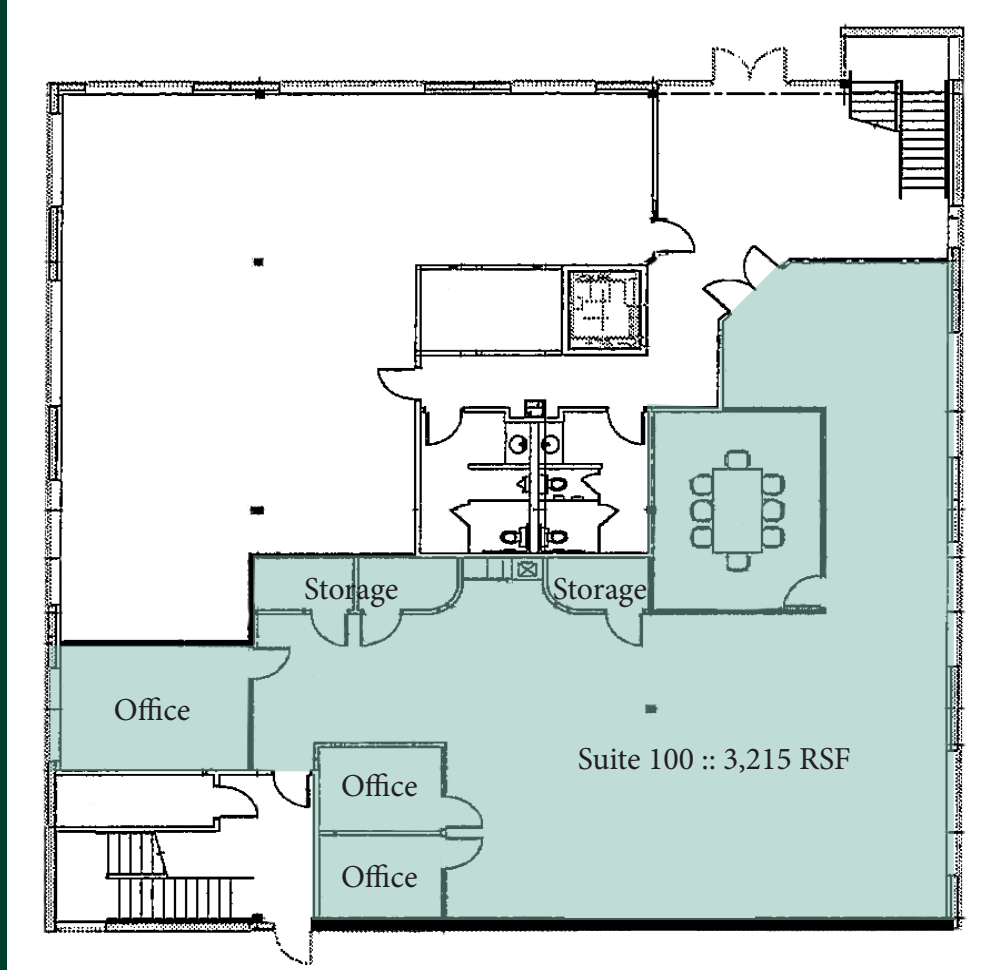
### GREAT SOUTH VALLEY LOCATION

- + Available Space:
  - Suite 100: 3,215 RSF
- + Lease Rate: \$15.50-17.50/SF, NNN
- + Parking: 5/1000
- + Close proximity to I-15, Bangerter & Redwood Road





**AVAILABLE SPACE**  
**FIRST FLOOR**



**Contact Us**

**Eric Smith**  
Senior Vice President  
+1 801 869 8008  
eric.smith@cbre.com

**Laurie Adair**  
Vice President  
+1 801 869 8009  
laurie.adair@cbre.com

© 2023 CBRE, Inc. All rights reserved. This information has been obtained from sources believed reliable, but has not been verified for accuracy or completeness. You should conduct a careful, independent investigation of the property and verify all information. Any reliance on this information is solely at your own risk. CBRE and the CBRE logo are service marks of CBRE, Inc. All other marks displayed on this document are the property of their respective owners, and the use of such logos does not imply any affiliation with or endorsement of CBRE. Photos herein are the property of their respective owners. Use of these images without the express written consent of the owner is prohibited.