

20335 Ventura Boulevard

Woodland Hills, CA 91364

OFFICE SPACE FOR LEASE



Charles Dunn

CONTACT:

TODD M. WUSCHNIG
Director
CalBRE #01367230
Direct | 818.455.8205
twuschnig@charlesdunn.com

CHARLES DUNN COMPANY, INC.

12925 Riverside Drive, Suite 201 | Sherman Oaks, CA 91423 | Lic. #01201641 | charlesdunn.com

PROPERTY DETAILS

20335 Ventura Boulevard is an atrium-style building in Woodland Hills. The property is fully renovated with new flooring, restrooms, elevator cabs, doors and much more.

PROPERTY FACTS

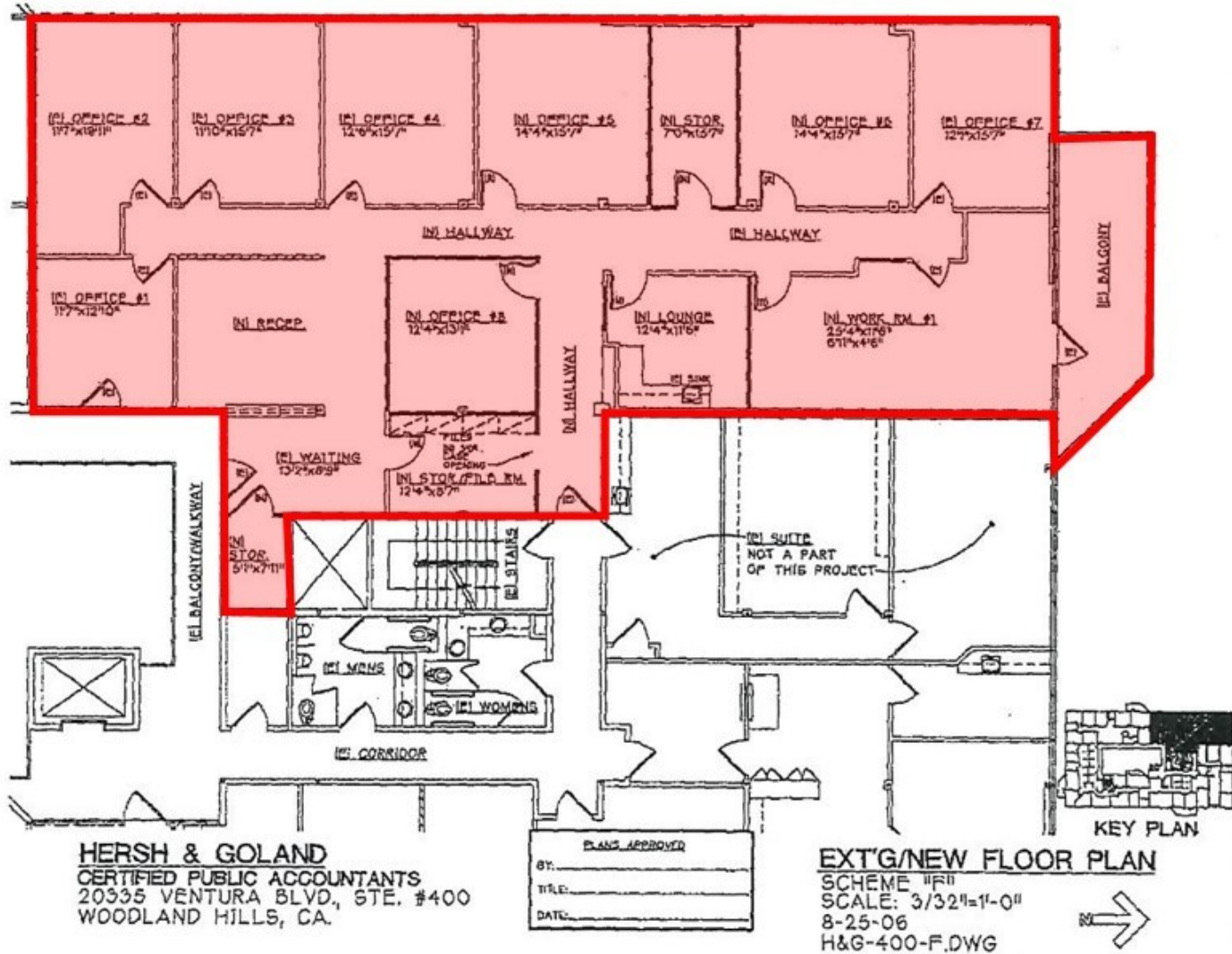
Space Available:	Suite 301: ± 1,400 SF (Avail. June 1, 2018) Suite 400: ± 3,800 SF (Avail. July 1, 2018)
Lease Rate:	\$1.85/SF Modified Gross (Utilities included)
Parking:	3/1000 Reserved: \$85.00/car Covered: \$55.00/car Tandem: \$45.00/car Adjacent Lot: \$25.00/car

PROPERTY HIGHLIGHTS

- > Gorgeous interior suites with sidelights, high end carpet, and lots of natural light throughout
- > Efficient layout suitable for almost any requirement
- > Excellent Ventura Blvd. location
- > Near the 101 Freeway on and off ramps
- > Walking distance to Target, Today, and many more!
- > On-site gym
- > Windowed offices
- > Good street parking
- > Some suites fully extended
- > Pet friendly building



SUITE 400 FLOOR PLAN



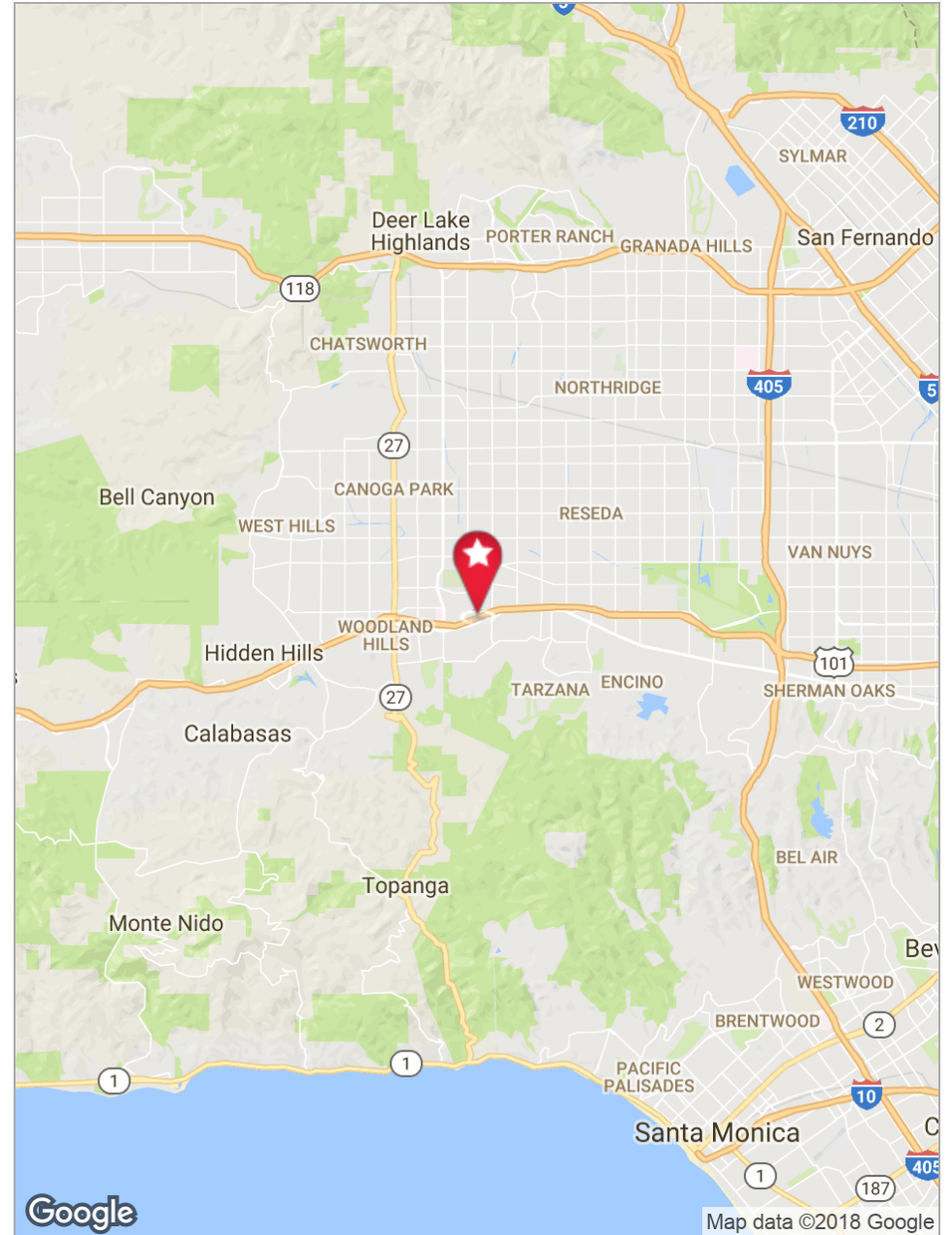
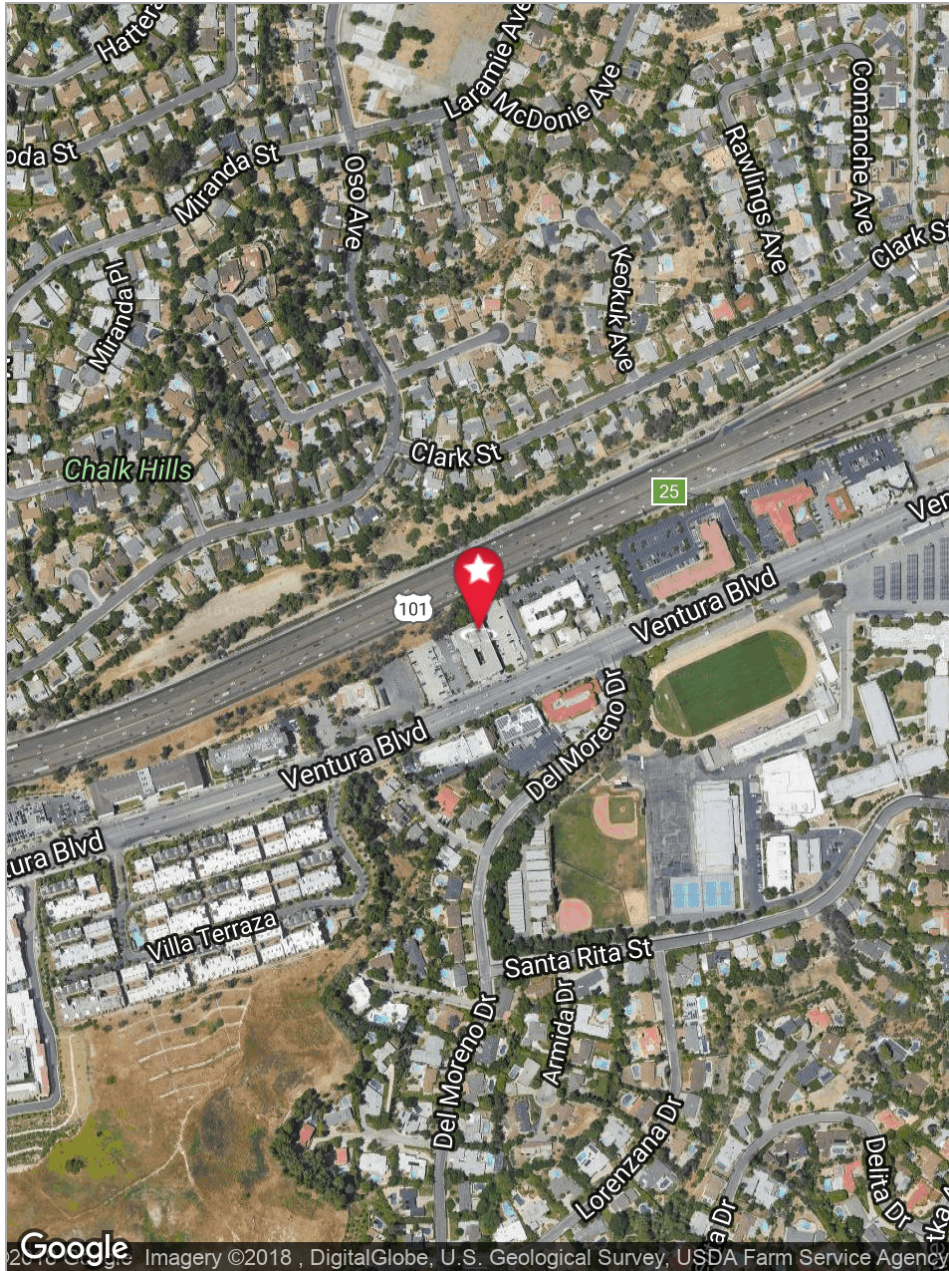
PROPERTY PHOTOS



PROPERTY PHOTOS



PROPERTY MAPS



20335 Ventura Boulevard

Woodland Hills, CA 91364

TODD M. WUSCHNIG

Director

CalBRE #01367230

Direct | 818.455.8205

twuschnig@charlesdunn.com

Charles Dunn Company, Inc. | 12925 Riverside Drive, Suite 201 | Sherman Oaks, CA 91423 | Lic. #01201641 | charlesdunn.com