

# 10 East 16th Street

FLATIRON DISTRICT  
NEW YORK, NY



NEWMARK

## 10 EAST 16TH STREET

# Property Details

### Location

South block between Fifth Avenue and Union Square West

### Approximate Size

Ground Floor	2,200 SF
Basement	2,200 SF
Total	4,400 SF

### Frontage

15 FT on East 16th Street

### Term

Long term

### Possession

Immediate

### Site Status

Formerly Chat n' Chew

### Neighbors

Breads Bakery, Tsurutontan Udon Noodle Brasserie, Barn Joo, Ling New York, Pokeworks, Cafe Manna and Milk Bar at CAMP

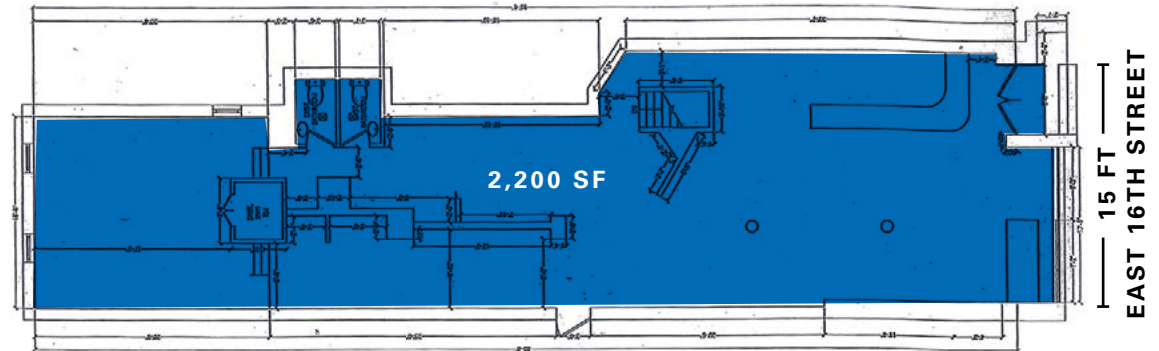
### Comments

Vented restaurant space

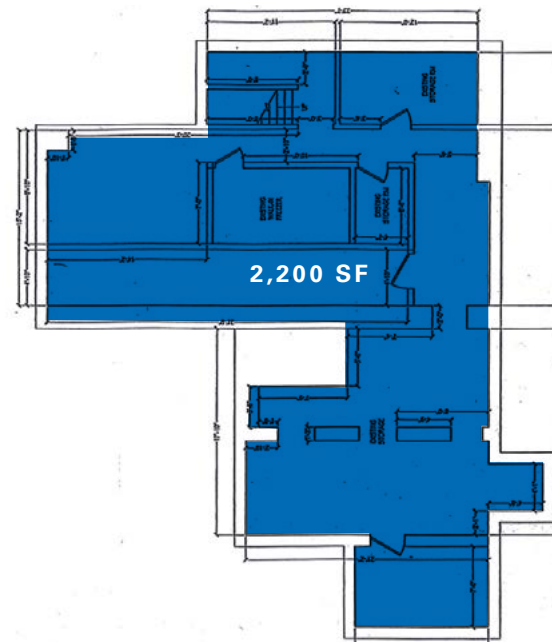
All uses considered

Busy short block between Union Square West and Fifth Avenue in the Flatiron District

### Ground Floor



### Basement



10 EAST 16TH STREET

# Interior Photos



# Area Retail



## CONTACT

**Ravi Idnani**  
 t 212-916-2938  
 ravi.idnani@nmrk.com

**Caleb Petersen**  
 t 212-351-9347  
 caleb.petersen@nmrk.com

**Andrew Stern**  
 t 212-351-9353  
 andrew.stern@nmrk.com

[nmrk.com](http://nmrk.com)