

Elevator Service in 2019!

For Lease

Medical & Professional Offices



1530 S Union Avenue

Tacoma, WA 98405

- ± 4,100 RSF available - served by elevator coming in 2019
- Existing suite sizes from approx. 1,200 RSF to 2,700 RSF
- Superb visibility on South Union Avenue
- Tenant pylon sign
- Building Tenants include MultiCare Health System, Sunrise Dental, Holistic Health Center and more
- 4.5 parking stalls per 1,000 SF
- Close access to Highway 16 and Interstate 5
- On Pierce Transit bus route
- Lease Rates: \$27.50 - \$28.50/RSF, Modified Gross

For more information:

Kim Marvik

+1 253 203 1325 • kmarvik@nai-psp.com



BELLEVUE | SEATTLE | TACOMA

1201 Pacific Avenue, Suite 1703

Tacoma, WA 98402

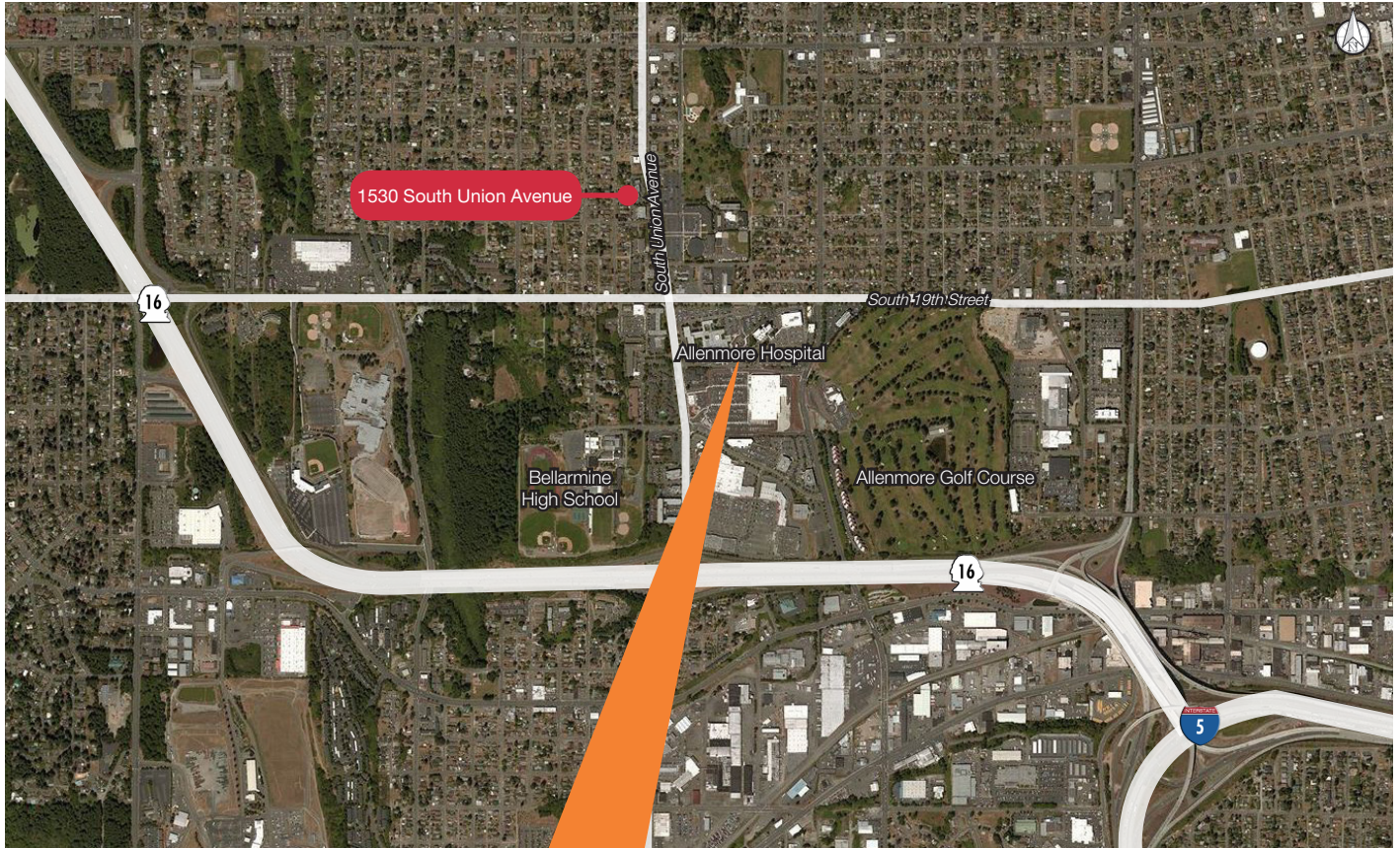
+1 253 383 3100

nai-psp.com

THE INFORMATION CONTAINED HEREIN HAS BEEN GIVEN TO US BY THE OWNER OF THE PROPERTY OR OTHER SOURCES WE DEEM RELIABLE, WE HAVE NO REASON TO DOUBT ITS ACCURACY, BUT WE DO NOT GUARANTEE IT. ALL INFORMATION SHOULD BE VERIFIED PRIOR TO PURCHASE OR LEASE.

Professional & Medical Offices

1530 S Union Avenue



Nearby Hospital & Medical Campus - 19th & S. Union Avenue
MultiCare Allenmore Hospital & Medical Center located at 1901 South Union Avenue near the subject property offers Tacoma residents convenient access to hundreds of primary and specialty care providers, the latest diagnostic and treatment technologies, plus a 24-hour Emergency Department all in a centrally located, patient-friendly campus. In September 2017, CHI Franciscan and MultiCare, the two largest health systems in Pierce County broke ground on their new 120-bed, \$45M Behavioral Health Hospital located on MultiCare's Allenmore campus. This new hospital will enhance the continuum of care and increase access to much-needed behavioral health services in Pierce County, South King County and surrounding areas.

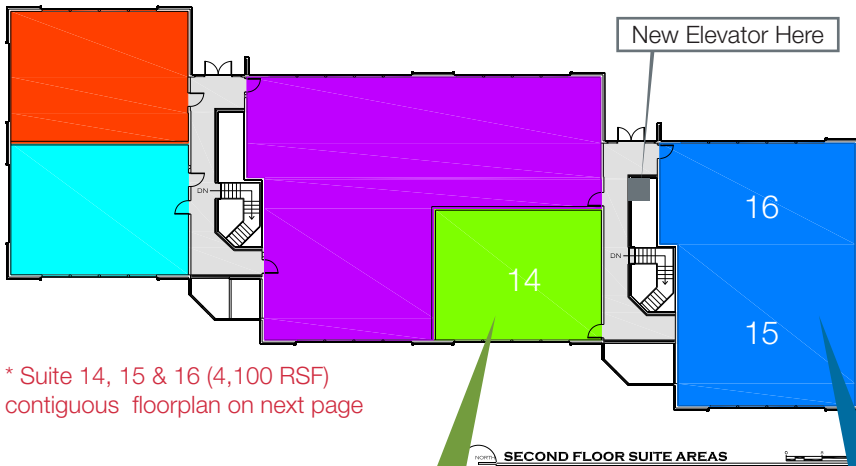


BELLEVUE | SEATTLE | TACOMA

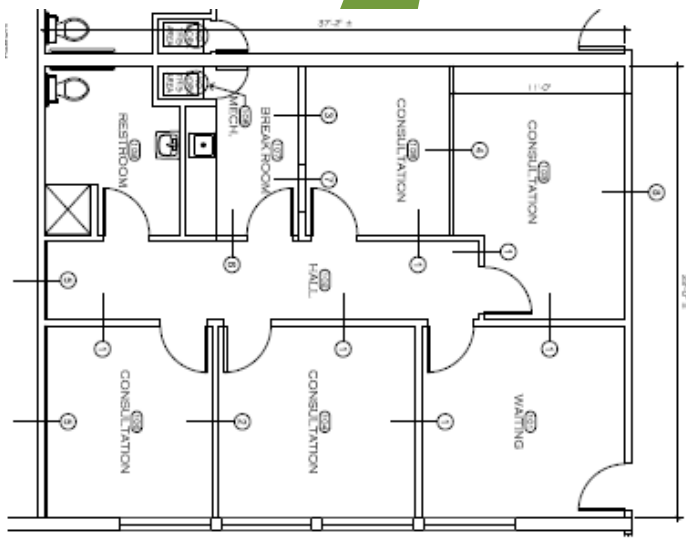
1201 Pacific Avenue, Suite 1703
Tacoma, WA 98402
+1 253 383 3100

nai-psp.com

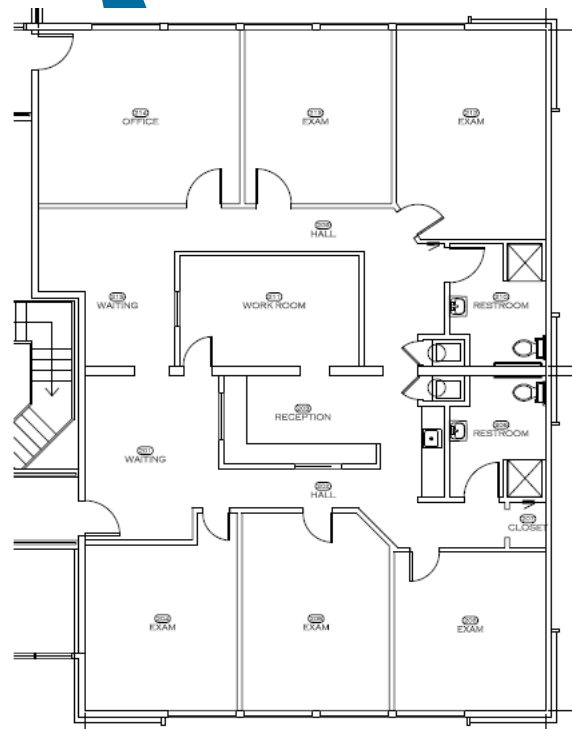
THE INFORMATION CONTAINED HEREIN HAS BEEN GIVEN TO US BY THE OWNER OF THE PROPERTY OR OTHER SOURCES WE DEEM RELIABLE, WE HAVE NO REASON TO DOUBT ITS ACCURACY, BUT WE DO NOT GUARANTEE IT. ALL INFORMATION SHOULD BE VERIFIED PRIOR TO PURCHASE OR LEASE.



Upper Level



Suite 14 - 1,214 RSF



Suites 15 & 16 - 2,692 RSF

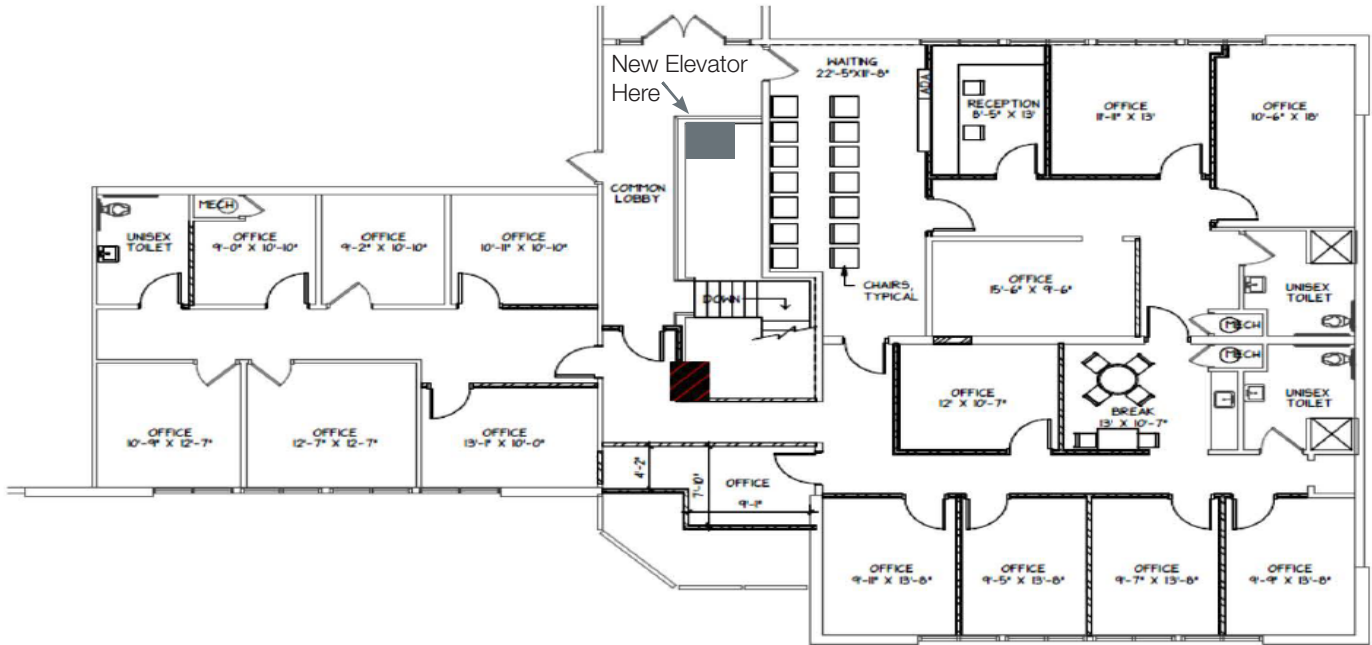


1201 Pacific Avenue, Suite 1703
Tacoma, WA 98402
+1 253 383 3100
nai-psp.com

BELLEVUE | SEATTLE | TACOMA

THE INFORMATION CONTAINED HEREIN HAS BEEN GIVEN TO US BY THE OWNER OF THE PROPERTY OR OTHER SOURCES WE DEEM RELIABLE, WE HAVE NO REASON TO DOUBT ITS ACCURACY, BUT WE DO NOT GUARANTEE IT. ALL INFORMATION SHOULD BE VERIFIED PRIOR TO PURCHASE OR LEASE.

Suites 14, 15 & 16 +/- 4,100 RSF



Professional & Medical Offices

1530 S Union Avenue



Parcel boundaries are approximate



1201 Pacific Avenue, Suite 1703
Tacoma, WA 98402
+1 253 383 3100
nai-psp.com

BELLEVUE | SEATTLE | TACOMA

THE INFORMATION CONTAINED HEREIN HAS BEEN GIVEN TO US BY THE OWNER OF THE PROPERTY OR OTHER SOURCES WE DEEM RELIABLE, WE HAVE NO REASON TO DOUBT ITS ACCURACY, BUT WE DO NOT GUARANTEE IT. ALL INFORMATION SHOULD BE VERIFIED PRIOR TO PURCHASE OR LEASE.