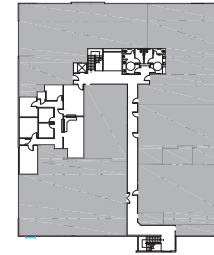
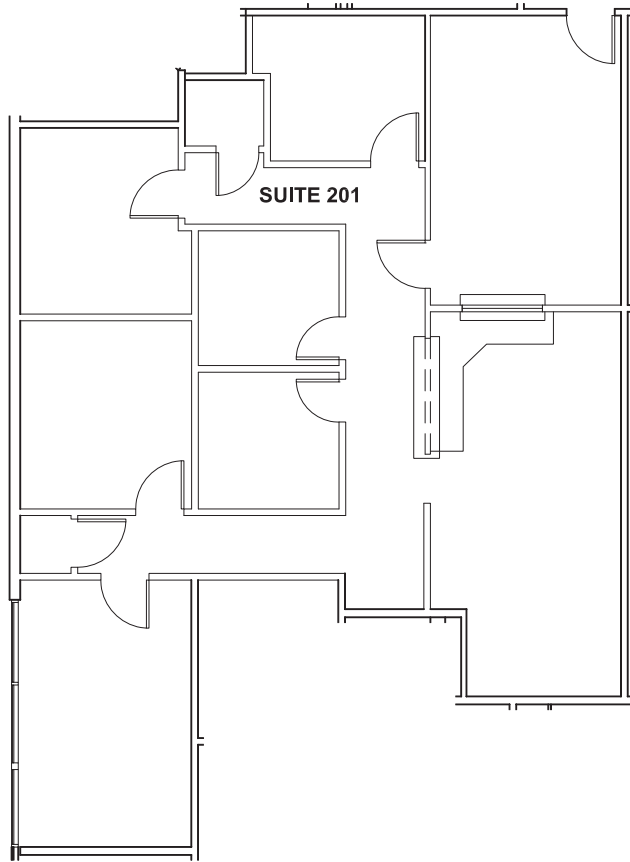


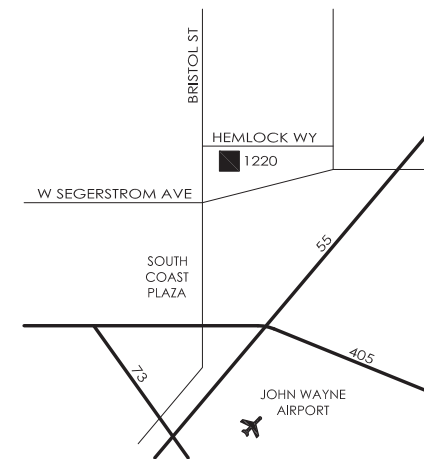
# FLOOR PLAN – SUITE 201 – 1,767 SF

# HEMLOCK

SANTA ANA, CALIFORNIA



Key Plan



### STEVEN R. LEWALLEN

Vice President

Lic# 01068304

949-725-8414

Steven.Lewallen@cbre.com

### RYAN DOPP

Senior Associate

Lic# 01902830

949-725-8409

Ryan.Dopp@cbre.com

### TAYLOR FRIEND

First Vice President

Lic# 01885394

714-371-9241

Taylor.Friend@cbre.com

© 2022 CBRE, Inc. All rights reserved. This information has been obtained from reliable sources but has not been verified for accuracy or completeness. CBRE, Inc. makes no guarantee, representation, or warranty and accepts no responsibility or liability for the accuracy, completeness, or reliability of the information contained herein. You should conduct a careful, independent investigation of the property and verify all information. Any reliance on this information is solely at your own risk. CBRE and the CBRE logo are service marks of CBRE, Inc. All other marks displayed on this document are the property of their respective owners, and the use of such marks does not imply any affiliation with or endorsement of CBRE. Photos herein are the property of their respective owners. Use of these images without the express written consent of the owner is prohibited.

