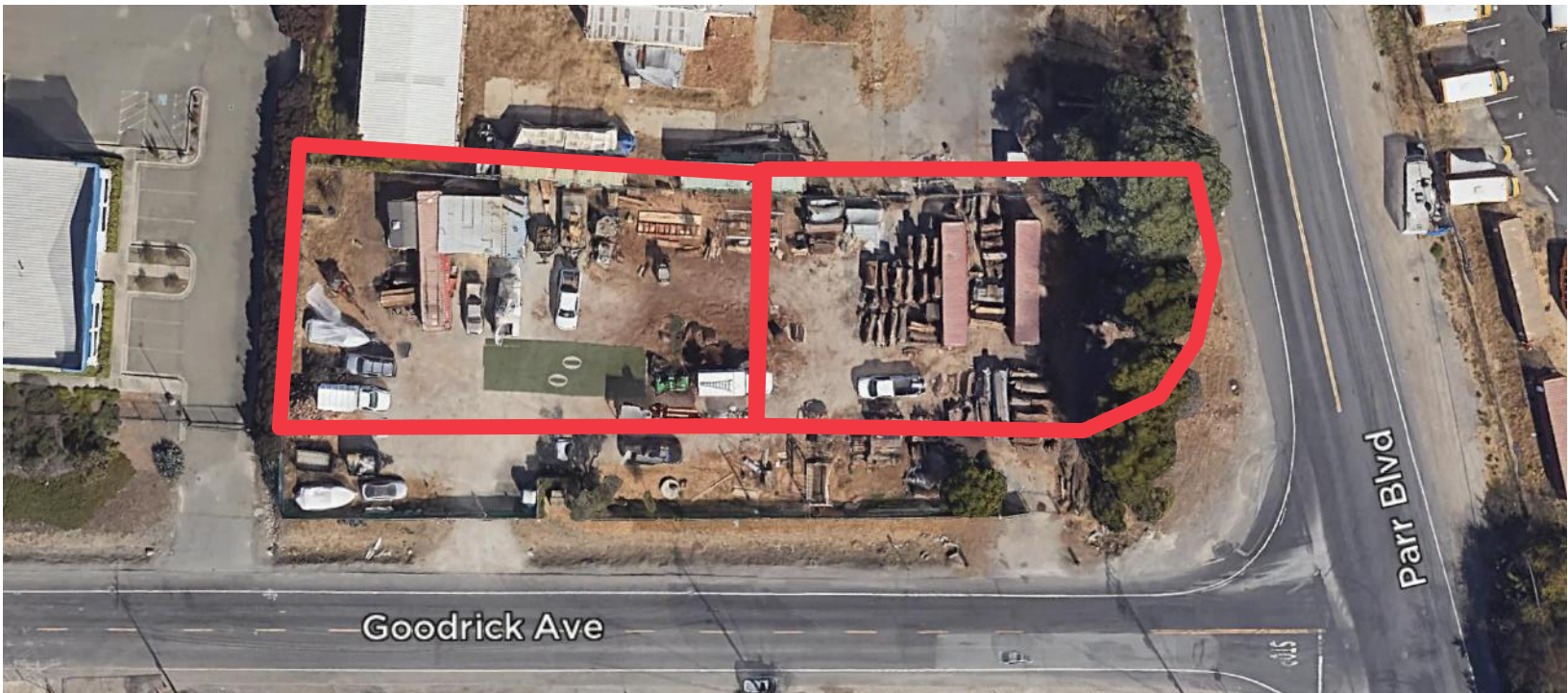


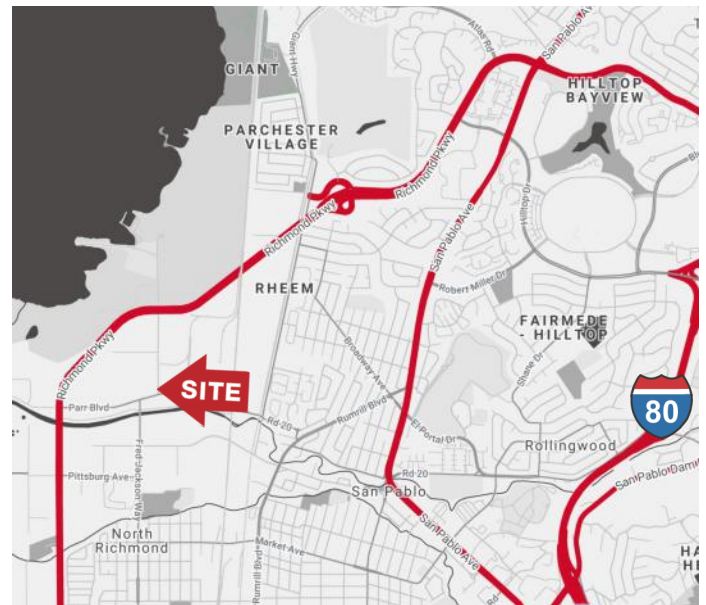
FOR SALE

GOODRICK AVE. & PARR BLVD.
RICHMOND, CA



PROPERTY HIGHLIGHTS

- Two (2) industrial zoned parcels
- Great Owner/User opportunity
- Ideal Richmond location—just off Richmond Parkway
- 12,850 SF (APN # 408-082-022-0)
- 10,759 SF (APN # 408-082-021-2)
- Sold together
- \$25./SF



[CLICK HERE FOR
ZONING INFORMATION](#)

For more information, please contact:

Ted Gallagher
Director
CA License #01467047
Direct: 925-627-2894
ted.gallagher@cushwake.com

Ken Reiff, SIOR
Managing Director
CA License #01133059
Direct: 916-617-4241
ken.reiff@cushwake.com

1333 N. California Blvd., Ste 500
Walnut Creek, CA 94596

400 Capitol Mall, Suite 1800
Sacramento, CA 95814

cushmanwakefield.com

[View Site Specific COVID-19 Prevention Plan](#)