

FOR LEASE

6 MONTHS
FREE RENT



SEATAC OFFICE

3100 Building, 3100 South 176th Street, Seatac, WA 98188



FEATURES:

- SUITE 1-A 9,381 SF - \$16.00 PSF/YR, FS (CAN BE DIVIDED)
- SUITE 2-B 1,305 SF - \$16.00 PSF/YR, FS (CAN BE DIVIDED)
- **6 MONTHS FREE RENT**
- READY FOR IMMEDIATE OCCUPANCY
- FREE PARKING – 4:1,000
- CLOSE TO MAJOR TRANSIT LINES & SEATAC AIRPORT
- GREAT FREEWAY ACCESS

For Additional Information Please Contact:

David Hall, CCIM
206-707-9000
David@fhrealityinc.com

FURSE & HALL REALTY, INC.
536 Westlake Avenue North
Seattle, WA 98109
Fhrealityinc.com



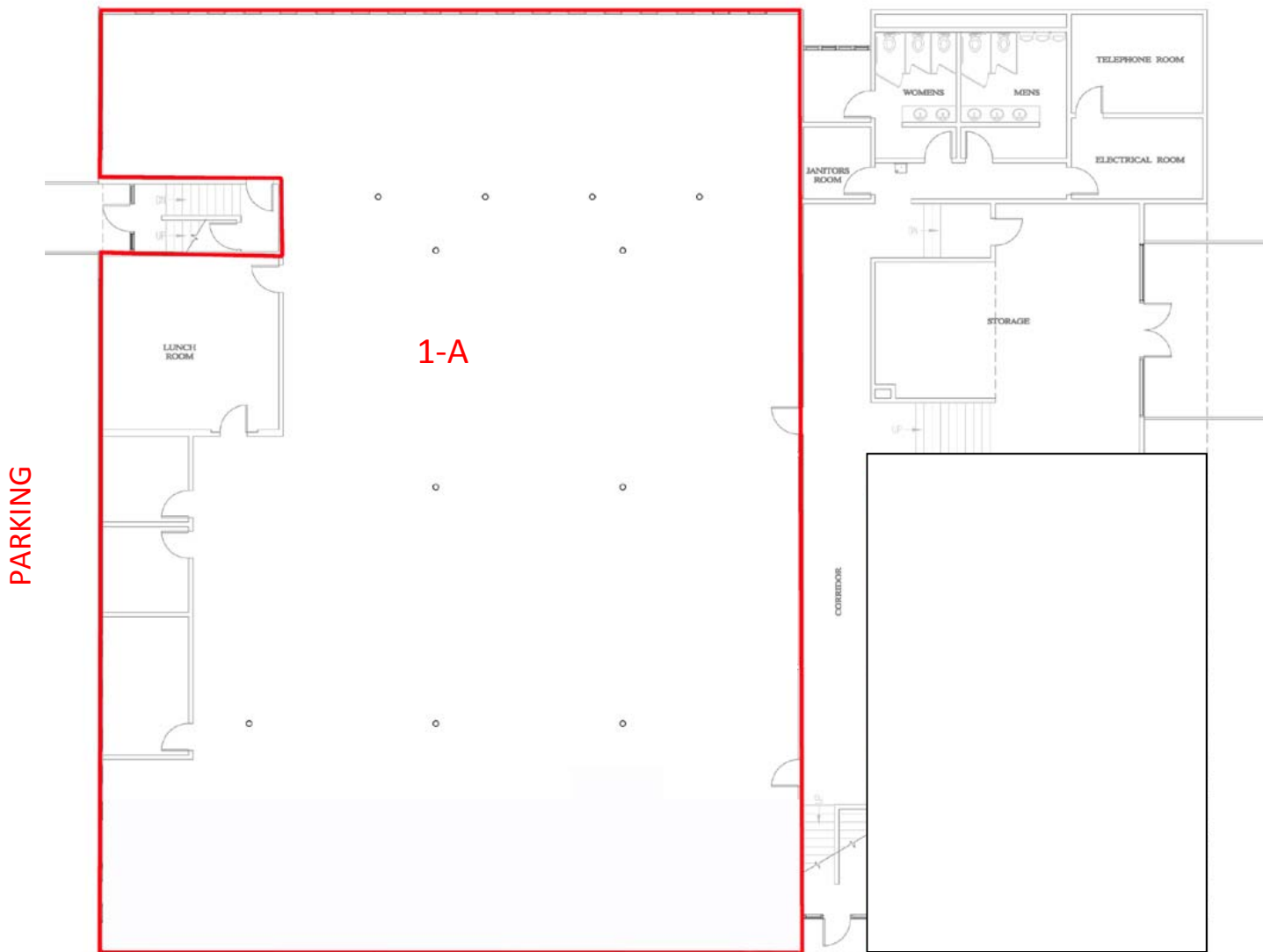
FOR LEASE



FLOORPLAN — 1st FLOOR

3100 Building, 3100 South 176th Street, Seatac, WA 98188

PARKING



PARKING

FURSE & HALL REALTY, INC.
536 Westlake Avenue North
Seattle, WA 98109
Fhrealtyinc.com

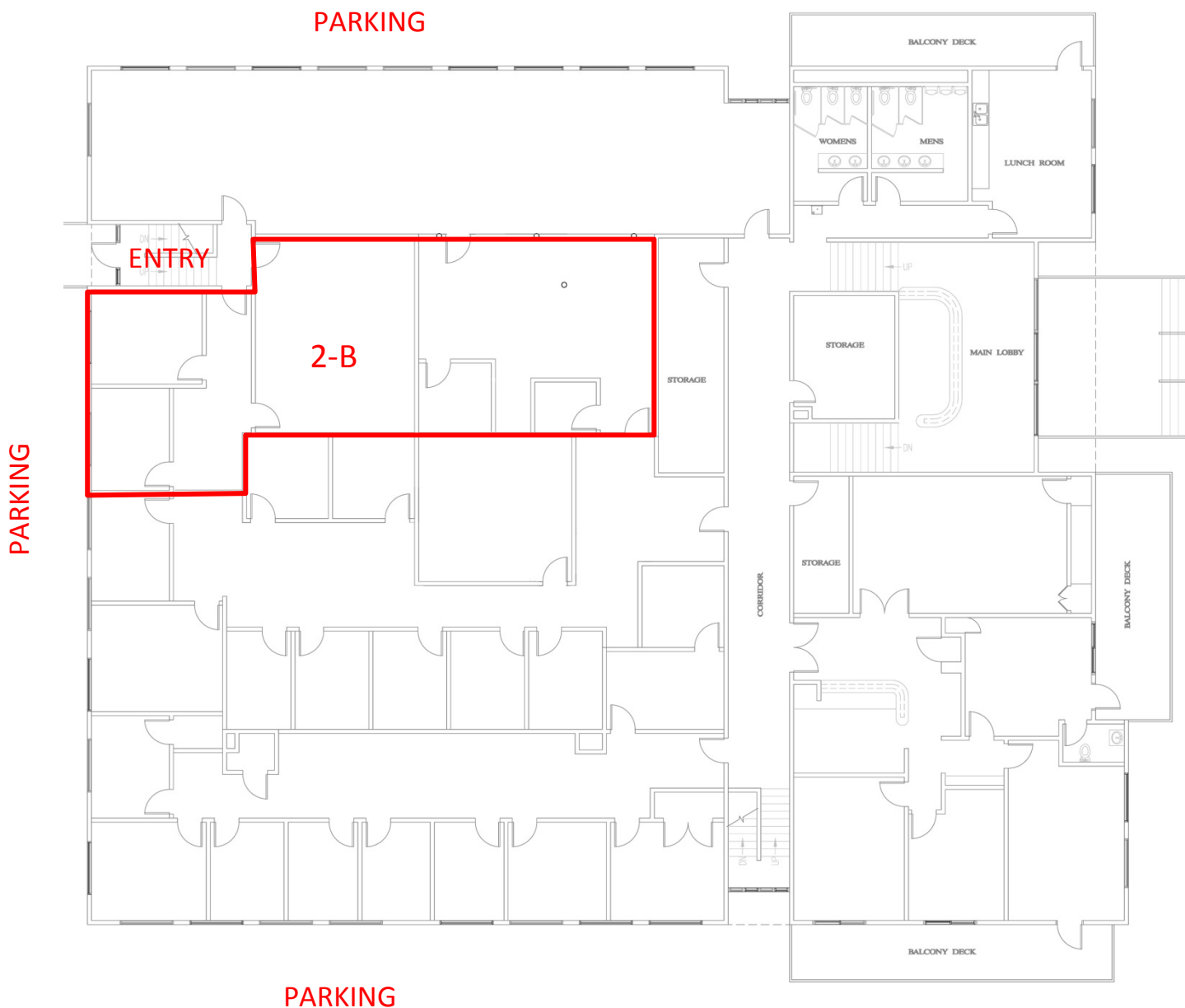


FOR LEASE



FLOORPLAN – 2nd FLOOR

3100 Building, 3100 South 176th Street, Seatac, WA 98188



FURSE & HALL REALTY, INC.
536 Westlake Avenue North
Seattle, WA 98109
Fhrealtyinc.com

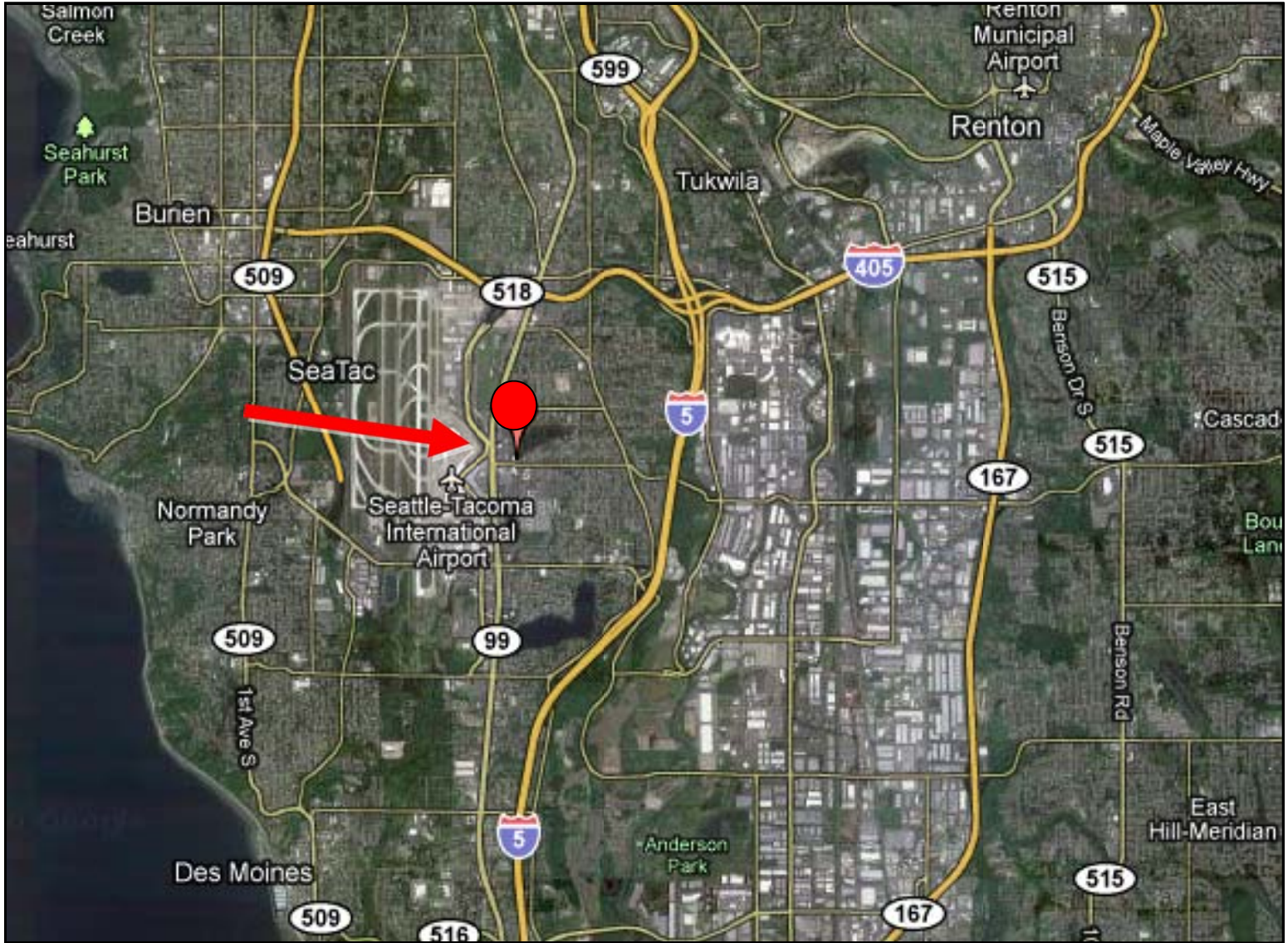


FOR LEASE



LOCATION

3100 Building, 3100 South 176th Street, Seatac, WA 98188



FURSS & HALL REALTY, INC.
536 Westlake Avenue North
Seattle, WA 98109
Fhrealtyinc.com





DEMOGRAPHICS

5129 Evergreen Way, Everett, WA 98188

Population	2010 Projection		
	< 1 Mile	< 3 Miles	< 5 Miles
Total Estimated Population	11,694	37,193	226,559
Total Census 2000 Population	10,349	30,785	199,282
Population Change %	11.2%	17.7%	12.1%
Population Density (People/SQ Mile)	6,131.3	6,096.2	5,596
Median Age	46.2	43.8	43.4
Total Males	6,030	19,359	113,575
Total Females	5,664	17,834	112,984

Income	2010 Projection		
	< 1 Mile	< 3 Miles	< 5 Miles
Total Estimated Population	11,694	37,193	226,559
Total Census 2000 Population	10,349	30,785	199,282
Population Change %	11.2%	17.7%	12.1%
Population Density (People/SQ Mile)	6,131.3	6,096.2	5,596
Median Age	46.2	43.8	43.4
Total Males	6,030	19,359	113,575
Total Females	5,664	17,834	112,984

FURSSE & HALL REALTY, INC.
 536 Westlake Avenue North
 Seattle, WA 98109
 Fhrealtyinc.com



FOR LEASE



GENERAL PROPERTY DATA

3100 Building, 3100 South 176th Street, Seatac, WA 98188

Gross Bldg. SF:	24,211
Lot SF:	66,211
Floors:	2
Type:	Office
Parking:	In-Common (78 Stalls)
Year Built:	1967/1985
Construction:	Wood Frame
Zoning:	CB-C
HVAC:	Forced Air/Heat Pump
Restrooms:	Common
Sprinklers:	No
Parcel Number:	282304-9172

FURSE & HALL REALTY, INC.
536 Westlake Avenue North
Seattle, WA 98109
Fhrealtyinc.com

