

For Sale

± 10.214 Acres

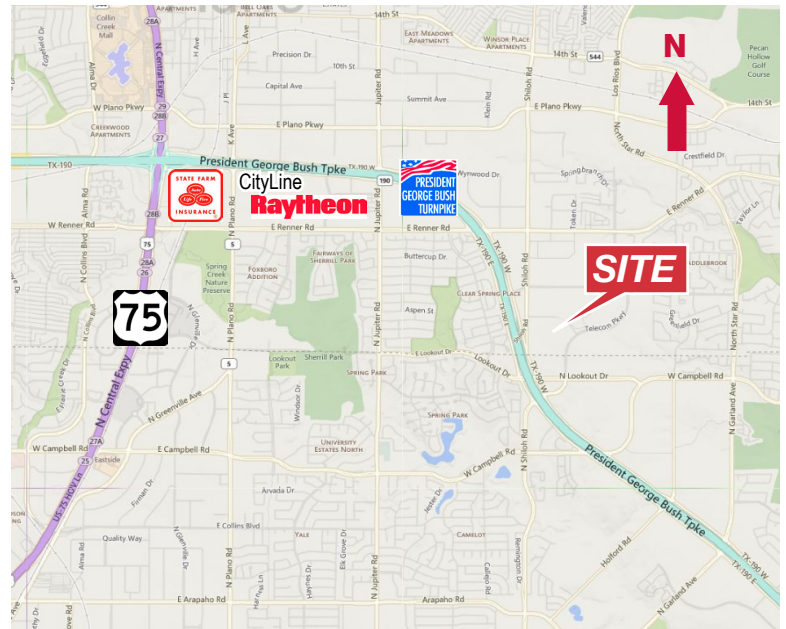


## 3200 Research Drive

Richardson, Texas 75082

### Property Features

- Zoned I-M(1)
- Ability to Build a 100,000 SF+ Building With 6+:1000 Parking
- Excellent Telecom Corridor Location
- Access on Telecom Parkway & off of Research Drive
- Close Proximity to Both President George Bush Turnpike & Central Expressway



**James Davis**

214 256 7103  
jdavis@robertlynn.com

**Dave Peterson**

214 256 7129  
dpeterson@robertlynn.com



THE INFORMATION CONTAINED HEREIN HAS BEEN GIVEN TO US BY THE OWNER OF THE PROPERTY OR OTHER SOURCES WE DEEM RELIABLE. WE HAVE NO REASON TO DOUBT ITS ACCURACY, BUT WE DO NOT GUARANTEE IT. ALL INFORMATION SHOULD BE VERIFIED PRIOR TO PURCHASE OR LEASE.

4851 LBJ Freeway 10<sup>th</sup> Floor  
Dallas TX 75244  
214 256 7100

[nairl.com](http://nairl.com)





CityLine  
Raytheon

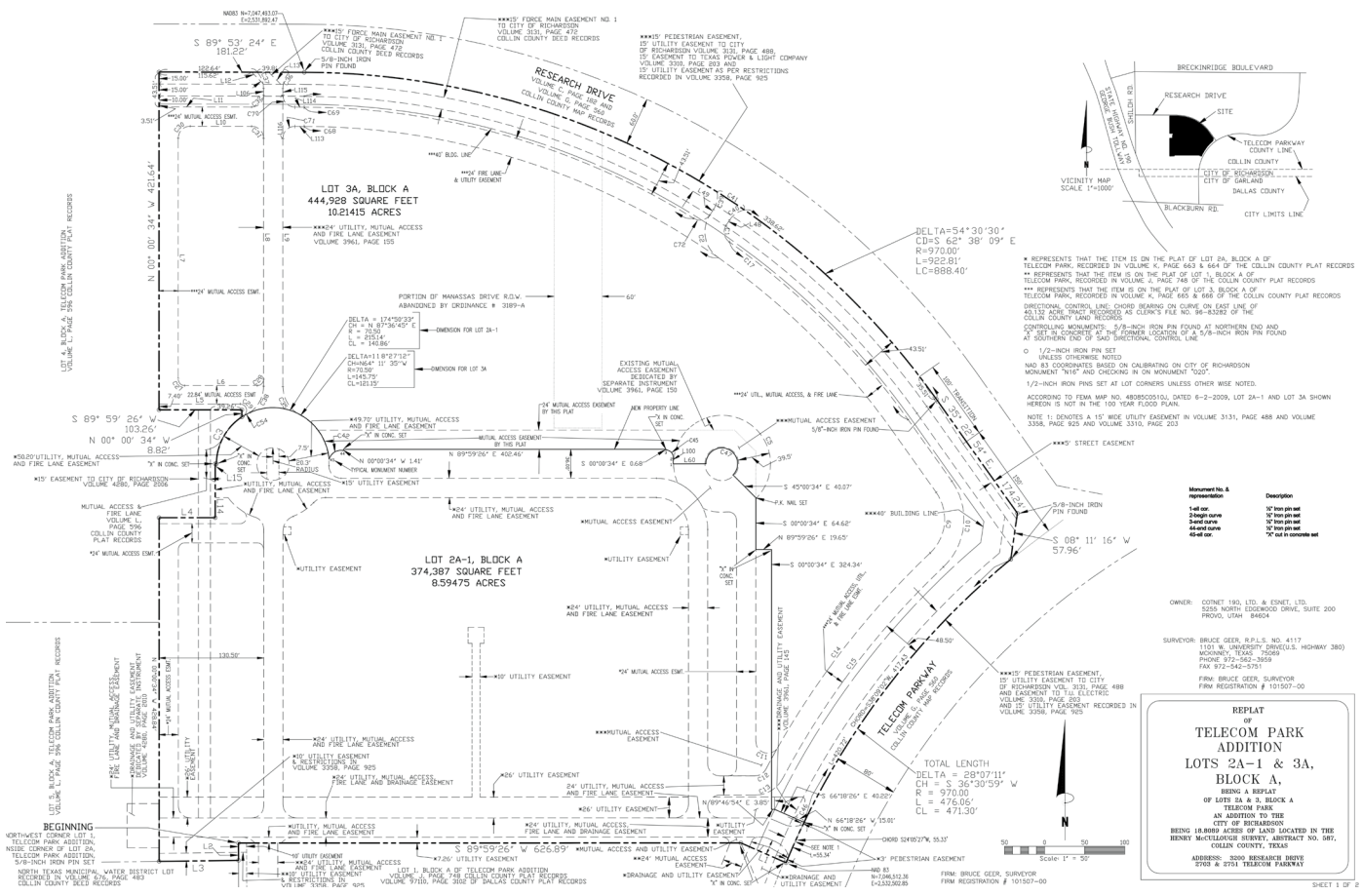
For Sale

± 10.214 Acres



Google earth

Imagery Date: 10/18/2013 32°59'31.67" N 96°40'10.02" W elev 614 ft eye alt 5622 ft



4851 LBJ Freeway 10th Floor  
Dallas TX 75244  
214 256 7100  
nairl.com