



# Available For Lease



Vibrant retail/office availabilities adjacent to multiple state agencies in growing area of Tumwater

Highly visible to all arterial streets

Owner is willing to build-to-suit for qualified tenants

Available: 798 SF - 3,733 SF

Starting at \$16.00 per SF, plus NNN

[kiddermathews.com](http://kiddermathews.com)

## Contact

**Ryan Haddock**  
360.596.9151  
rhaddock@kiddermathews.com

**Amy Evans**  
360.705.1377  
aevans@kiddermathews.com

# Old Towne Plaza

111 Tumwater Boulevard SE, Tumwater, WA



## Contact

**Ryan Haddock**  
360.596.9151  
rhaddock@kiddermathews.com

**Amy Evans**  
360.705.1377  
aevans@kiddermathews.com

## AVAILABLE SPACE

### 111 Tumwater Boulevard SE, Tumwater, WA

Suites		SF
A109	Northwest Home Team	2,803
A110	Inferno's	4,800
A209	Vision Fitness	8,003
<b>A300</b>	<b>AVAILABLE</b>	<b>3,018</b>
A301	Dentist	4,098
<b>B101</b>	<b>AVAILABLE</b>	<b>1,167</b>
B102	Pho 111	2,372
<b>B104</b>	<b>AVAILABLE</b>	<b>1,913</b>
B106	Farmers Insurance	1,186
B107	Meconi's Italian Subs	2,372
<b>B201</b>	<b>AVAILABLE</b>	<b>1,200</b>
B202/203	WA Connection Academy	2,813
B205	C.H.I.R.O. Health Center	1,568
<b>B206</b>	<b>AVAILABLE</b>	<b>798</b>
B207	South Sound Medical Billing	1,200
C111	Pro Active Sports Medicine	5,835
C116	Lexy's Nails	1,272
<b>C117</b>	<b>AVAILABLE</b>	<b>1,250</b>
C118	911 Driving School	1,500
<b>C211/213</b>	<b>AVAILABLE</b>	<b>3,733</b>
C214	ResCare Inc.	2,800
C216	Lonestar	2,363
D119	Tail Dragger	1,620
D120	Edward Jones	1,080
<b>D121</b>	<b>AVAILABLE</b>	<b>1,500</b>
D122	Niko Teriyaki	1,500

[kiddermathews.com](http://kiddermathews.com)

# Old Towne Plaza - Building A

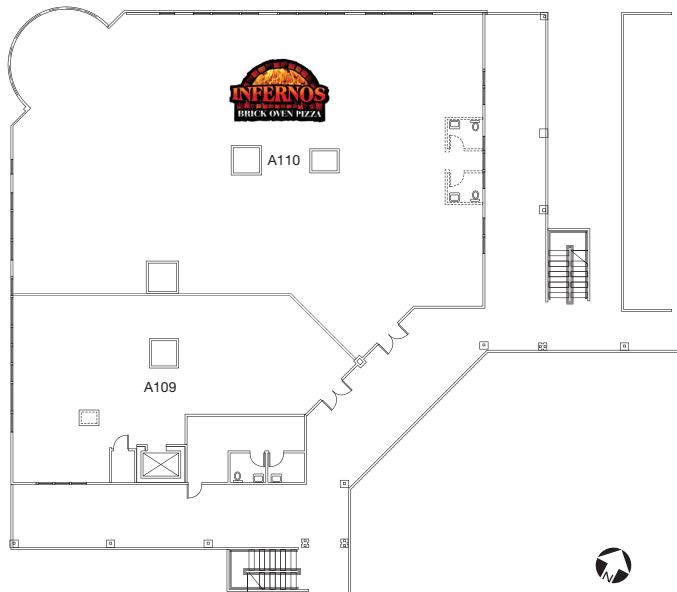
111 Tumwater Boulevard SE, Tumwater, WA



## BUILDING A

Suites		SF
A109	Northwest Home Team	2,803
A110	Inferno's	4,800
A209	Vision Fitness	8,003
<b>A300</b>	<b>AVAILABLE</b>	<b>3,162</b>
A301	Dentist	4,098

## First Floor



\*THIS FLOORPLAN IS NOT TO SCALE\*

## Third Floor



\*THIS FLOORPLAN IS NOT TO SCALE\*

## Contact

**Ryan Haddock**  
360.596.9151  
rhaddock@kiddermathews.com

**Amy Evans**  
360.705.1377  
aevans@kiddermathews.com

[kiddermathews.com](http://kiddermathews.com)

This information supplied herein is from sources we deem reliable. It is provided without any representation, warranty or guarantee, expressed or implied as to its accuracy. Prospective Buyer or Tenant should conduct an independent investigation and verification of all matters deemed to be material, including, but not limited to, statements of income and expenses. Consult your attorney, accountant, or other professional advisor.



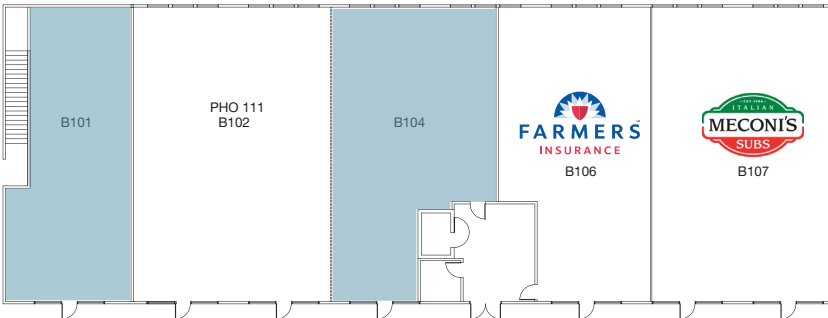
# Old Towne Plaza - Building B

111 Tumwater Boulevard SE, Tumwater, WA



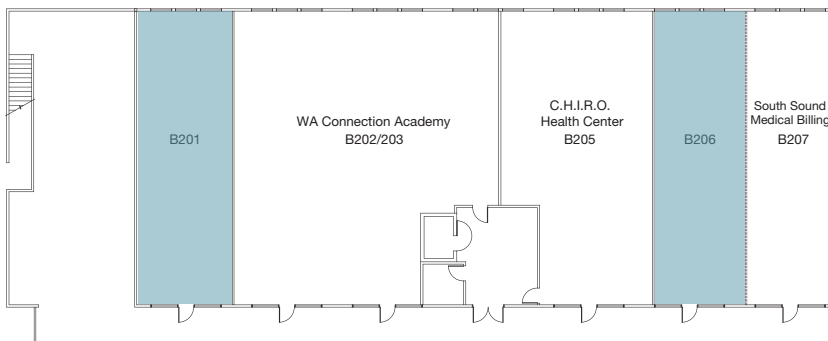
## BUILDING B

Suites		SF
<b>B101</b>	<b>AVAILABLE</b>	<b>1,167</b>
B102	Pho 111	2,372
<b>B104</b>	<b>AVAILABLE</b>	<b>1,913</b>
B106	Farmer's Insurance	1,186
B107	Meconi's Italian Subs	2,372
<b>B201</b>	<b>AVAILABLE</b>	<b>1,200</b>
B202/203	WA Connection Academy	2,813
B205	C.H.I.R.O. Health Center	1,568
<b>B206</b>	<b>AVAILABLE</b>	<b>798</b>
B207	South Sound Medical Billing	1,200



\*THESE FLOORPLANS ARE NOT TO SCALE\*

## First Floor



## Second Floor



## Contact

**Ryan Haddock**  
360.596.9151  
rhaddock@kiddermathews.com

**Amy Evans**  
360.705.1377  
aevans@kiddermathews.com

[kiddermathews.com](http://kiddermathews.com)

This information supplied herein is from sources we deem reliable. It is provided without any representation, warranty or guarantee, expressed or implied as to its accuracy. Prospective Buyer or Tenant should conduct an independent investigation and verification of all matters deemed to be material, including, but not limited to, statements of income and expenses. Consult your attorney, accountant, or other professional advisor.

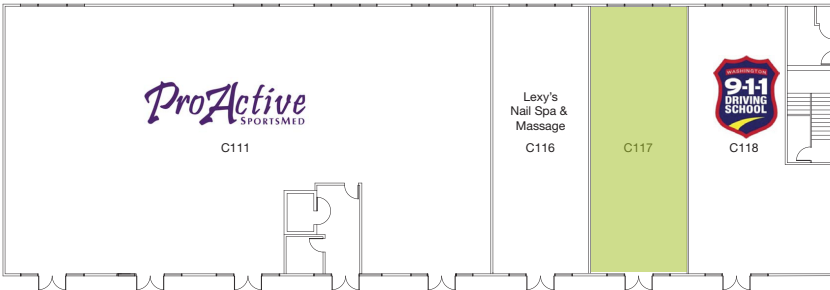
# Old Towne Plaza - Building C

111 Tumwater Boulevard SE, Tumwater, WA



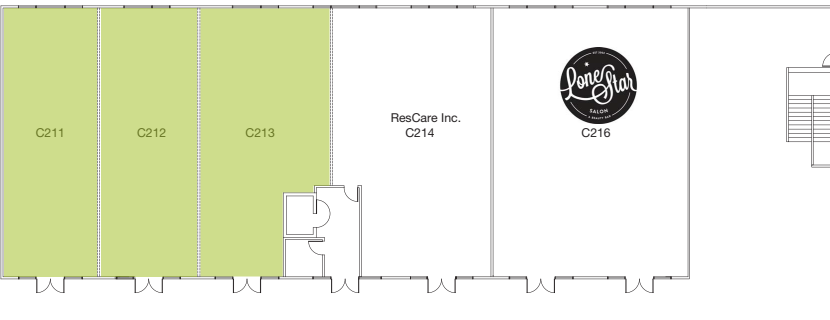
## BUILDING C

Suites		SF
C111	Pro Active Sports Medicine	5,835
C116	Lexy's Nails	1,272
<b>C117</b>	<b>AVAILABLE</b>	<b>1,250</b>
C118	911 Driving School	1,500
<b>C211/213</b>	<b>AVAILABLE</b>	<b>3,733</b>
C214	ResCare Inc.	2,800
C216	Lonestar	2,363



\*THESE FLOORPLANS ARE NOT TO SCALE\*

## First Floor



## Second Floor



## Contact

**Ryan Haddock**  
360.596.9151  
rhaddock@kiddermathews.com

**Amy Evans**  
360.705.1377  
aevans@kiddermathews.com

[kiddermathews.com](http://kiddermathews.com)

This information supplied herein is from sources we deem reliable. It is provided without any representation, warranty or guarantee, expressed or implied as to its accuracy. Prospective Buyer or Tenant should conduct an independent investigation and verification of all matters deemed to be material, including, but not limited to, statements of income and expenses. Consult your attorney, accountant, or other professional advisor.

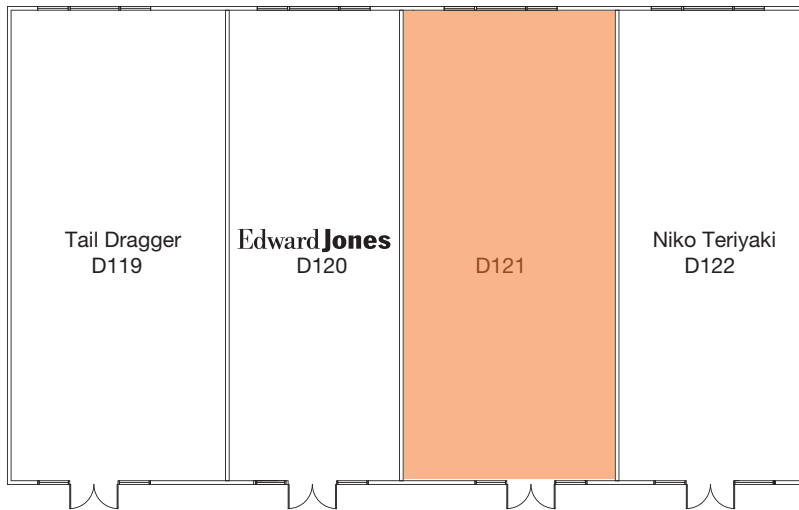
# Old Towne Plaza - Building D

125 Tumwater Boulevard SE, Tumwater, WA



## BUILDING D

Suites		SF
D119	Tail Dragger	1,620
D120	Edward Jones	1,080
<b>D121</b>	<b>AVAILABLE</b>	<b>1,500</b>
D122	Niko Teriyaki	1,500



\*THIS FLOORPLAN IS NOT TO SCALE\*



## Contact

**Ryan Haddock**  
360.596.9151  
rhaddock@kiddermathews.com

**Amy Evans**  
360.705.1377  
aevans@kiddermathews.com

[kiddermathews.com](http://kiddermathews.com)

This information supplied herein is from sources we deem reliable. It is provided without any representation, warranty or guarantee, expressed or implied as to its accuracy. Prospective Buyer or Tenant should conduct an independent investigation and verification of all matters deemed to be material, including, but not limited to, statements of income and expenses. Consult your attorney, accountant, or other professional advisor.

