

SOUTHGATE PLAZA SOUTH OHIO SALINA, KANSAS



Co-Tenants:

Planet Fitness

Speakeasy Bar & Grill

Population

Median Age

Median Household Income

1 Mile

11,467

40.2

\$50,949

3 Mile

46,651

37.3

\$44,476

5 Mile

49,782

37.2

\$44,419

Excellent Retail/Office Leasing Opportunity

South Ohio Street Corridor

Strong Mix of Retail/Professional

Zoned C-3 Neighborhood Commercial

Flexible Space Sizes and Term Available

Will Subdivide and Build to Suit

CPD - 27,500

For Information Contact: Jeff Maes or Mike Wilson, Office (785) 493-8500

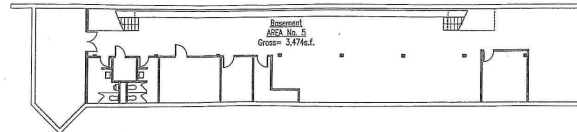
jeffm@comprorealty.com / mwilson@comprorealty.com



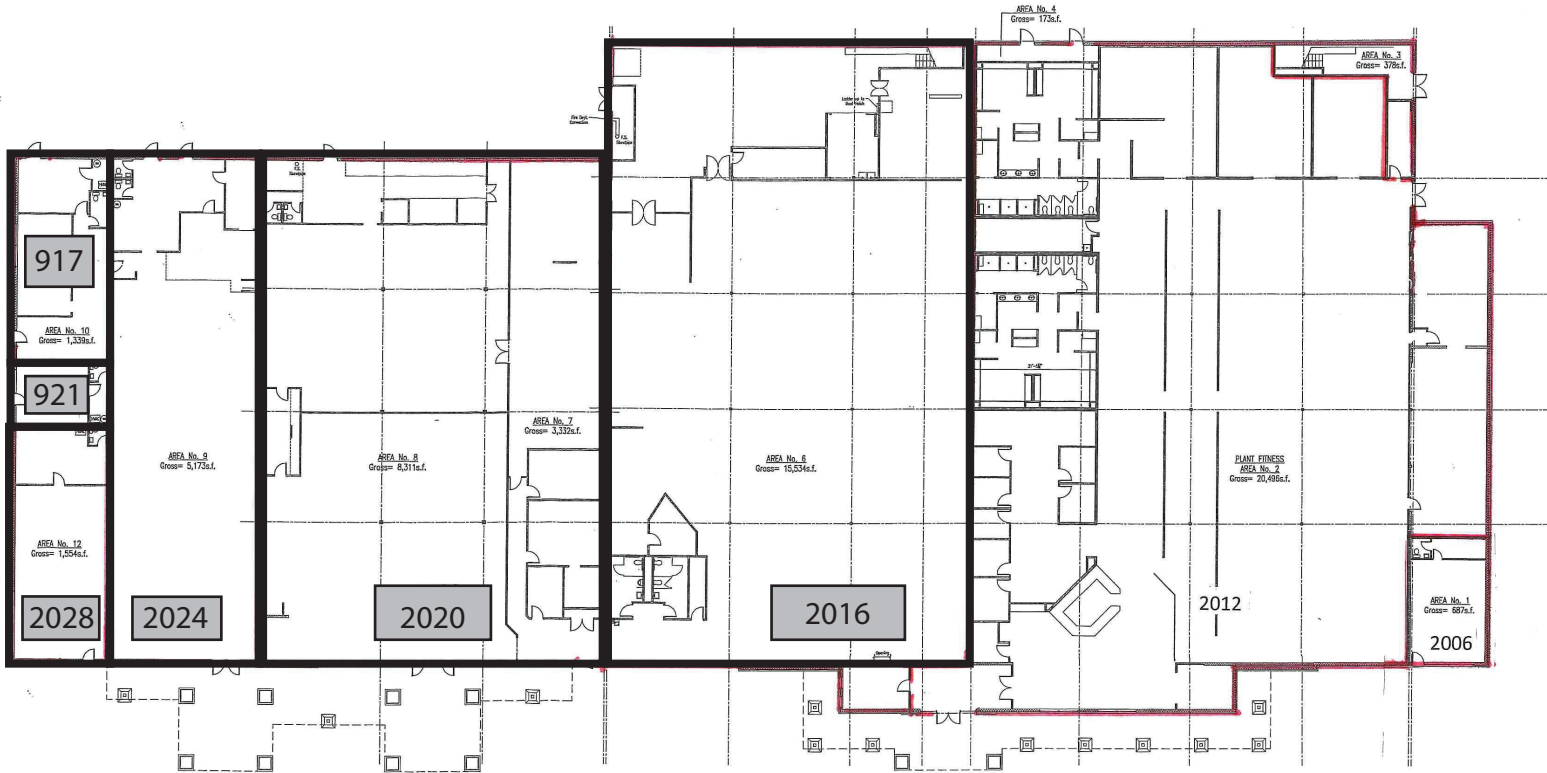
157 S. Seventh, Salina, KS 67401



157 S. Seventh, Salina, KS 67401



A SOUTHGATE BUILDING BASEMENT PLAN
SCALE: 1/16" = 1'-0"



A SOUTHGATE BUILDING FLOOR PLAN
SCALE: 1/16" = 1'-0"



LEASEABLE SPACE:

| | | | |
|--------------------|------------------|--------------------|------------------|
| 2016 S OHIO | 15,534 sf | 2020 S OHIO | 11,643 sf |
| 2024 S OHIO | 5,173 sf | 2028 S OHIO | 1,554 sf |
| 917 BUCKEYE | 1,339 sf | 921 BUCKEYE | 416 sf |

DMA

DMA Architects, PA
2035 E. Iron #100
Salina, Kansas 67401
Phone: 785-823-6002
Fax: 785-823-2010
E-mail: donmarr@dmapa.com
donmarr@dmapa.com

REPRODUCTION: This document and the information contained herein may be reproduced or conveyed in any form without the expressed written consent of DMA Architects, PA. This includes copying, disclosure or construction use and is prohibited by Copyright Law.

Project:
Southgate Plaza
2006 S. Ohio St.
Salina, Kansas 67401

Drawing:
Building Plan

| | |
|-------|----------|
| Sheet | 1 |
| Drawn | DM / DM |
| Date | 10-20-16 |



O
H
I
O
S
T
R
E
E
T



MAGNOLIA ROAD

Jeff Maes or Mike Wilson
Office (785) 493-8500
Cell (785) 342-6625
Cell (785) 341-0247
jeffm@comprorealty.com
mwilson@comprorealty.com