



107

Corner Of Grand & Mercer
GRAND STREET

DETAILS:

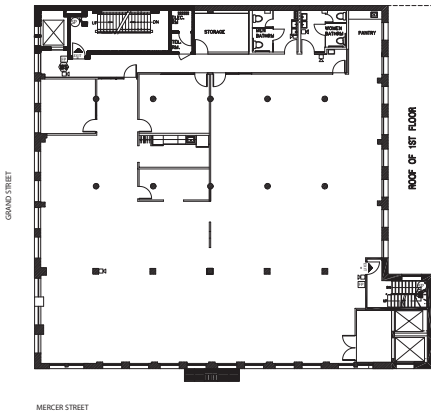
2nd Floor	Size: 8,600 RSF	Possession: June 1, 2020
3rd Floor	Size: 8,600 RSF	Possession: Immediate
4th Floor	Size: 8,600 RSF	Possession: June 1, 2020

Asking Rent: **Please Inquire**

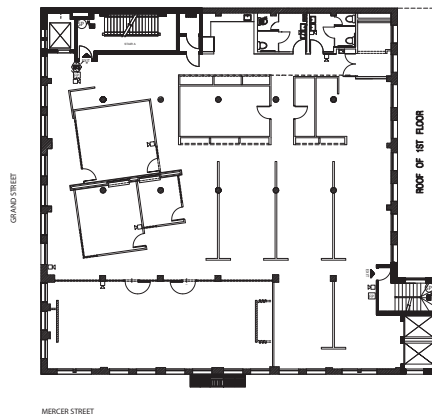
Additional contiguous office space + 4,000 SF of retail at 32 Mercer available

 **SINVIN**
COMMERCIAL REAL ESTATE & ADVISORY

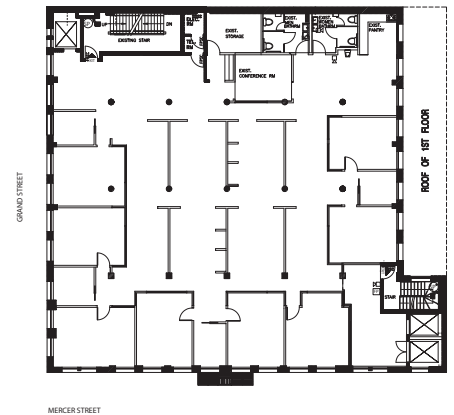
2nd Floor



3rd Floor



4th Floor



NOTES :

- Rare large block of space in central Soho
- Elegant corner building with three sides of windows
- Each floor features high ceilings, hardwood floors, and cable trays
- Lobbies on both Grand and Mercer
- Secure card key access system
- Robust IT infrastructure including fiber
- Potential for further expansion to upper floors



107

Corner Of Grand & Mercer
GRAND STREET

SINVIN
COMMERCIAL REAL ESTATE & ADVISORY



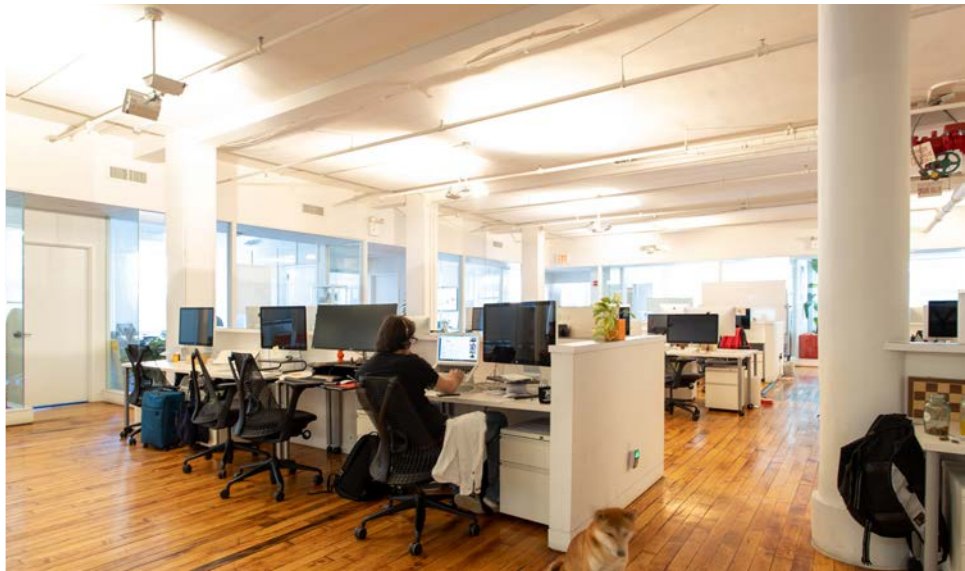
2nd Floor



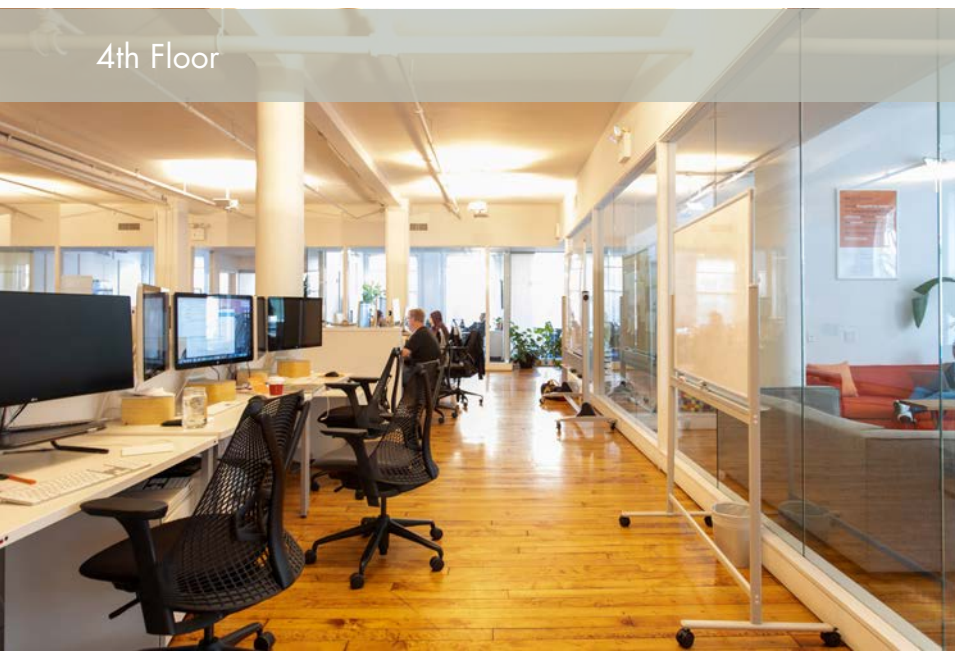
2nd Floor



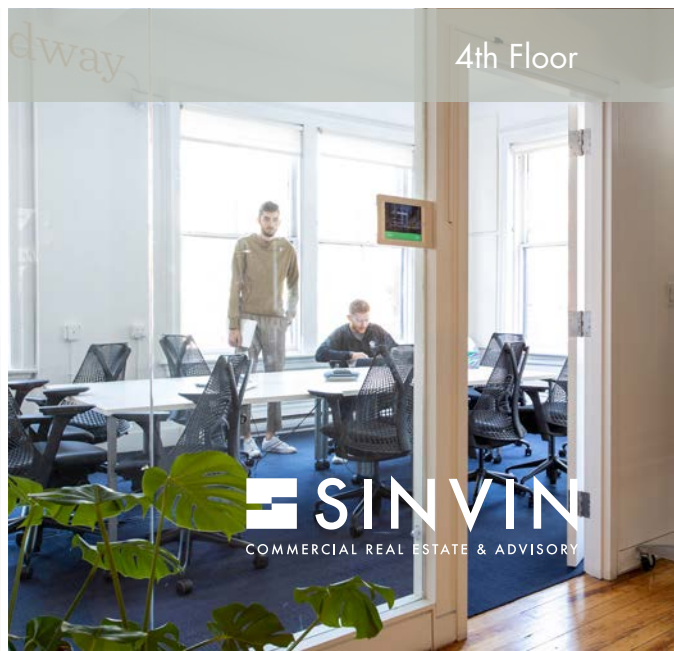
3rd Floor



4th Floor



4th Floor



4th Floor

107

Corner Of Grand & Mercer
GRAND STREET

PLEASE CONTACT:

Christopher Owles
212.604.9002
chris@sinvin.com

Randy Kornblatt
646.673.8772
randy@sinvin.com

SINVIN
COMMERCIAL REAL ESTATE & ADVISORY

WOOSTER STREET

- HANSON FITNESS
 - SAM BROCATO SALON
 - JEFFREY DEITCH
 - KAI GALLERY
 - FLAIR
 - Acne
- FRAME DENIM theory
- STONE ISLAND
- Kartell

GREENE STREET

- GANDIA BLASCO
 - GUDRUN SJORDEN
 - Artemide
 - FOU
 - FOU RAVEN
 - IF SOHO
 - DANIEL PATRICK
 - Rain
 - ZADIG & VOLTAIRE MEN'S
- OFF-WHITE
- COCO MAT
- GALLI
- Babeland
- ANTIQUE GARAGE

MERCER STREET

- KEETSA
 - TYLR
 - GANNI
 - DERMALOGICA
 - WELLS FARGO
- THINK COFFEE
- BOSE

BROADWAY

- TOPSHOP
- CITIBANK
- Timberland
- ALDO

CROSBY STREET

GRAND STREET

- HÄSTENS
- TEAM GALLERY
- Boffi
- THE WEBSTER
- Tom Dixon
- STUDIOANISE
- JEFFREY DEITCH
- ANITA ROGERS GALLERY

GRAND STREET

- MM6
 - VANS DQM GENERAL
 - WOLF & BREDER
 - ALEXANDER WANG
 - RONALD FELDMAN FINE ARTS
 - LEE BROOM
 - CITE
 - USM Möbelbausysteme
 - KSubi
 - FOSCARINI
 - BLUE IN GREEN
- FAITH CONNEXION
- ANTHOM
- NIKE LAB
- 3x1
- BILLIONAIRE BOYS CLUB
- OAK + FORT

GRAND STREET

- VFILES
 - agnis &
 - NECESSARY CLOTHING
 - G-STAR RAW
 - DUANE reade
 - MUJI
 - CB2
 - JUBILEE MARKET
 - NECESSARY CLOTHING
- 107

- SAGA SHOES
- MYSTIQUE
- MICHAEL KORS
- VALLEY NATIONAL
- HENRYBUILT
- NECESSARY CLOTHING
- Foot Locker
- SIBON
- TATE & YOKO
- RED DIGITAL CINEMA
- Le Botaniste
- PARACHUTE
- LAICALE
- AETHER
- INDUSTRY WEST
- Champion
- Ry 13
- Rich Owens

CANAL STREET

CANAL STREET

CANAL LIGHTING & PARTS

- PALACE SKATEBOARDS
- STADIUM GOODS
- STEVE MADDEN

- OMG
- PROPEL FOOTWEAR
- OPENING CEREMONY
- SARAJO
- MICHELE VARIAN