

Modern Office Space For Lease

2400 SPRUCE STREET | BOULDER, CO 80302
SUITE 100B

Size: 1,017 SF
Price: \$26.00 NNN (\$15.90)
Available: 03/01/2021

PRACTICALLY A PICNIC

Fantastic opportunity to lease this small office space in a great central Boulder location steps from restaurants and coffee shops. Suites features two offices and an open bull pen, plus high ceilings and large windows. Building amenities also include a shower and covered parking. Ideal suite for a start up or growing company, you will feel right at home with Greenleaf park out your back door.

PROPERTY HIGHLIGHTS

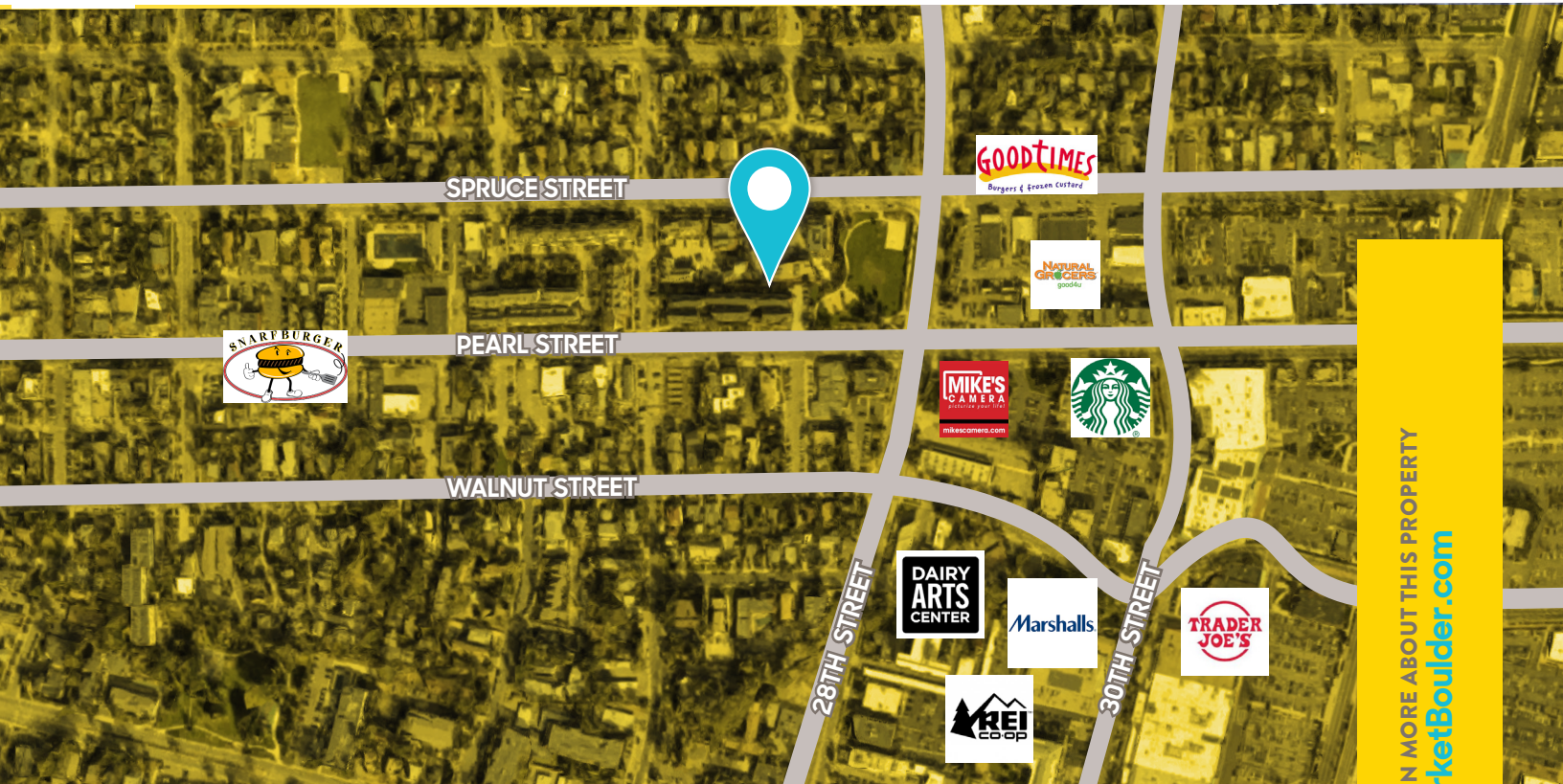
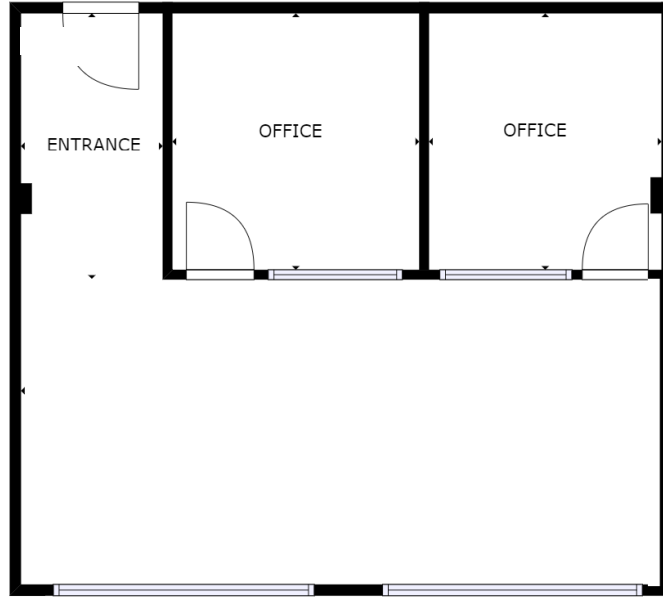
- Two offices and open bull pen
- Common restrooms with shower
- High ceilings and lots of natural light
- Onsite parking; located next to a park



market

REAL ESTATE

DISCLAIMER: The information contained herein has been obtained from sources believed to be reliable. While we do not doubt its accuracy, we have not verified it and make no guarantee, warranty or representation about it. It is your responsibility to independently confirm its accuracy and completeness.



TODD WALSH, CCIM

303 444 4888 Todd@MarketBoulder.com

LAURA FRENKEL

303 444 4994 Laura@MarketBoulder.com

LEARN MORE ABOUT THIS PROPERTY
MarketBoulder.com

