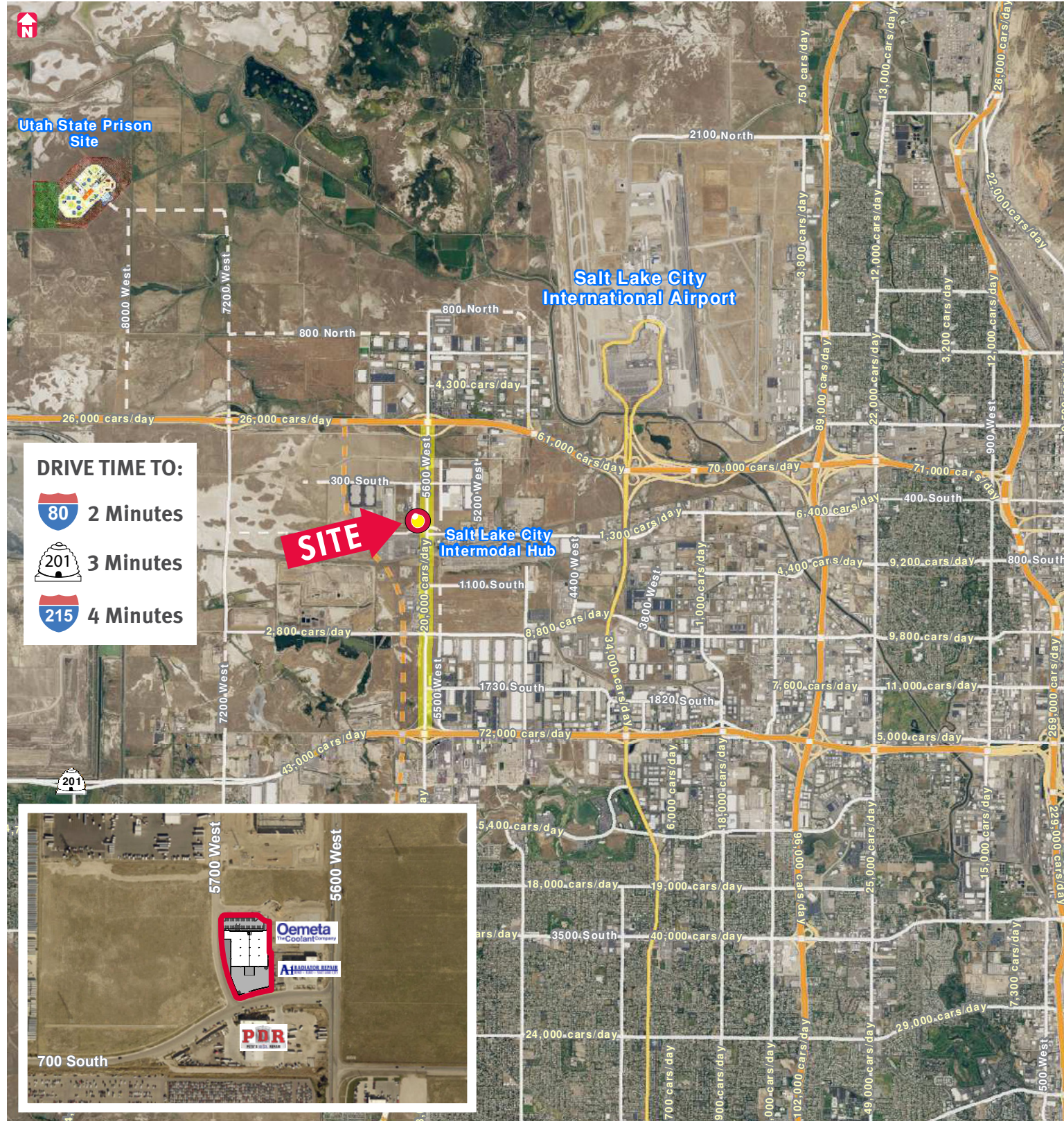


IRON HORSE

5700 West 700 South, Salt Lake City, Utah 84104

IRON HORSE

5700 West 700 South, Salt Lake City, Utah 84104



AVAILABLE

46,094 SF

PROPERTY FEATURES

- Building: 46,094 SF
- Divisible to 25,454 SF & 20,640 SF
- Total Office: 4,450 SF
 - Main: 2,700 SF
 - Mezzanine: 1,750 SF
- 2.61 Acres
- Column Spacing: 52'6" x 46'8"
- Auto Parking Stalls: 42
- Natural lighting throughout with Large Glass Front Entryways & Clerestory Windows
- Rear Loading Configuration
- Building Depth: 200'
- Loading: Four (4) Dock High Doors (9' x 10') and Four (4) Ground
- Level Doors (14' x 16')
- Clear Height: 28'
- Sprinklered - ESFR
- Minutes to Salt Lake City International Airport
- Excellent Access to I-15, I-215, Bangerter Highway, Highway 201 and I-80

FOR MORE
INFORMATION
CONTACT

LUCAS M. BURBANK
801.578.5522
lburbank@ngacres.com

KELSIE AKIYAMA
801.578.5504
kakiyama@ngacres.com

IRON HORSE

5700 West 700 South, Salt Lake City, Utah 84104

BUILDING SPECS

- Total Available: 46,094 SF Building
- Divisible to 25,454 & 20,640 SF
- Building Depth - 200'
- Zoning - M-1
- Acreage - 2.61
- Clear Height - 28'
- Loading - Four (4) Dock High Doors (9' x 10') and Four (4) Ground Level Doors (14' x 16')
- Column Spacing - 52'6" x 46'8"

