

## OSW Maltby Road Building

8502 Maltby Road  
Woodinville, WA (Maltby)

Excellent Owner-User  
Opportunity

26,950 SF (includes 5,000 SF air  
conditioned office)

Seller may leaseback for a short  
time

Large 2.59 acres with paved  
yard area

Grade level loading doors  
(dock high possible)

24' clear height

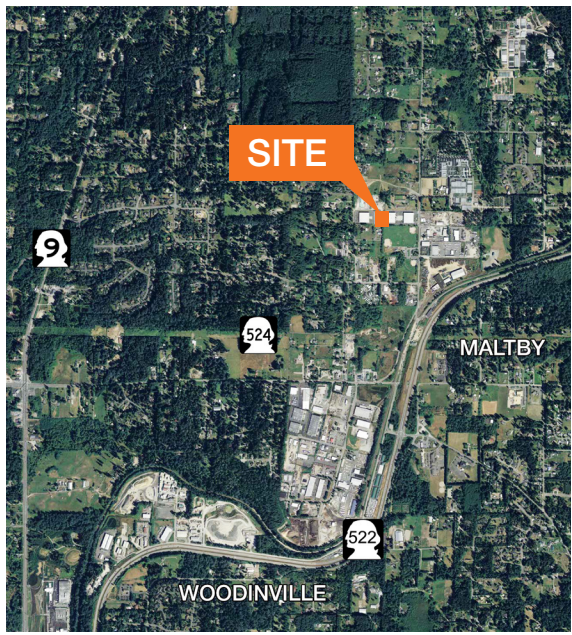
Heavy power (800 amps of 480  
volt 3-phase power)

Zoned LI, Snohomish County

Sale price \$4,042,500 (\$150 / SF)



### Location



### Contact

**Zach Vall-Spinosa**  
425.450.1115  
zachv@kiddermathews.com

**Dave Bernard**  
425.450.1103  
dbernard@kiddermathews.com

**James Leptich**  
425.450.1159  
jleptich@kiddermathews.com



## OSW Maltby Road Building



### Contact

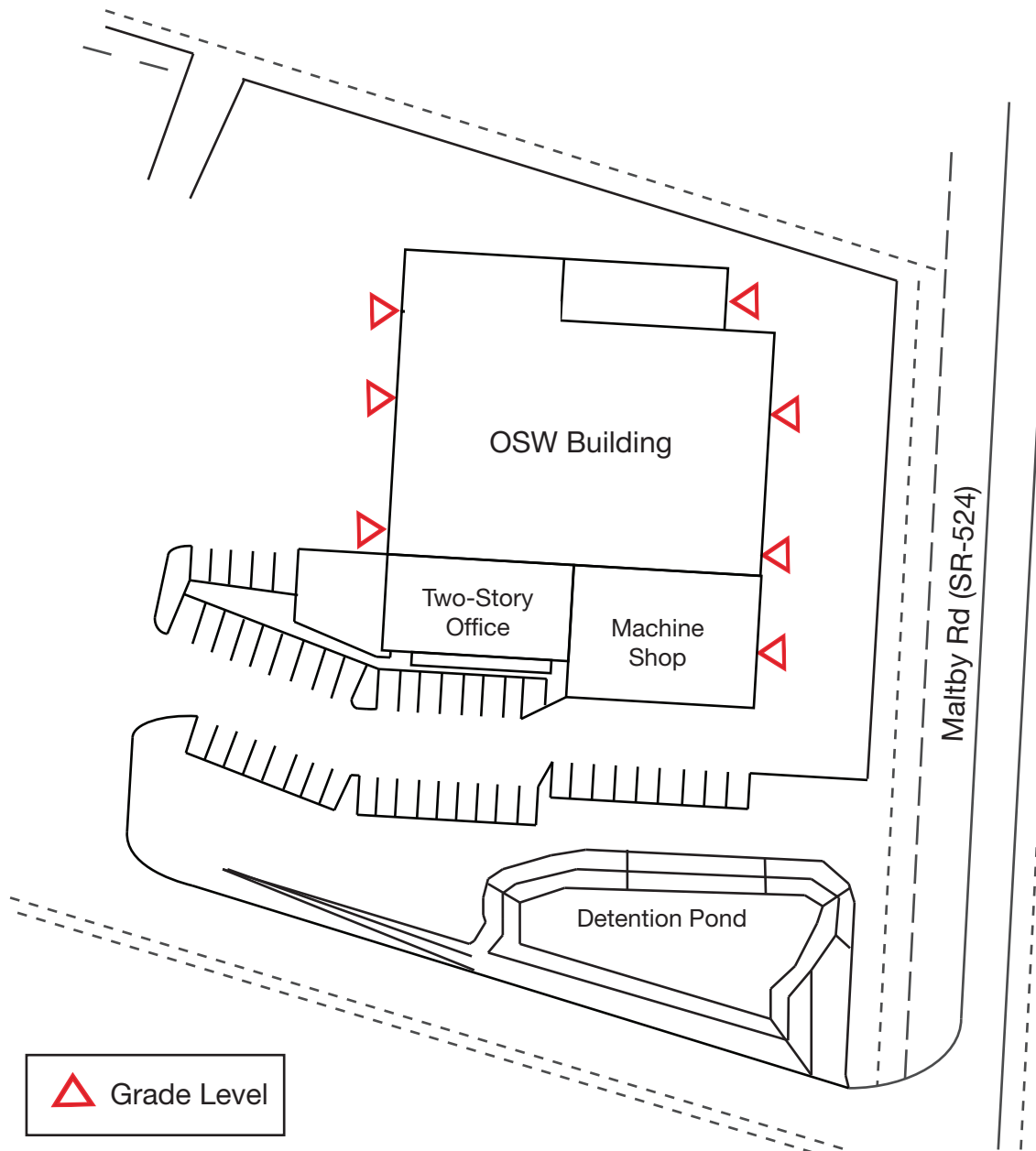
**Zach Vall-Spinosa**  
425.450.1115  
zachv@kiddermathews.com

**Dave Bernard**  
425.450.1103  
dbernard@kiddermathews.com

**James Leptich**  
425.450.1159  
jleptich@kiddermathews.com



## SITE PLAN



## Contact

**Zach Vall-Spinosa**  
425.450.1115  
zachv@kiddermathews.com

**Dave Bernard**  
425.450.1103  
dbernard@kiddermathews.com

**James Leptich**  
425.450.1159  
jleptich@kiddermathews.com