

885 Gateway Center Way, Suite 201

San Diego, CA



FOR LEASE

A ±6,320 SF Office within Close Proximity to San Diego's Major Freeways

Jeff Brown
858.369.3016
jbrown@kiddermathews.com
LIC #01496665

Mickey Morera
858.369.3030
mmorera@kiddermathews.com
LIC #00950071

kiddermathews.com

km Kidder
Mathews

885 Gateway Center Way, Suite 201

San Diego, CA

885 Gateway Center Way
Features ±6,320 SF of Office
with High-End Finishes.

PROPERTY FEATURES

18 private offices, conference rooms, restrooms,
and kitchen

16 on-site reserved parking spaces with abundant
street parking

Zoned IL-3-1

Approximately 4 miles to Downtown San Diego, 9
miles to San Diego International Airport

Premium freeway access to San Diego's SR-94,
I-15, I-805 and I-5

Asking rent: \$1.30/SF gross



Jeff Brown

858.369.3016
jbrown@kiddermathews.com
LIC #01496665

Mickey Morera

858.369.3030
mmorera@kiddermathews.com
LIC #00950071

kiddermathews.com



885 Gateway Center Way, Suite 201

San Diego, CA



Jeff Brown
858.369.3016
jbrown@kiddermathews.com
LIC #01496665

Mickey Morera
858.369.3030
mmorera@kiddermathews.com
LIC #00950071

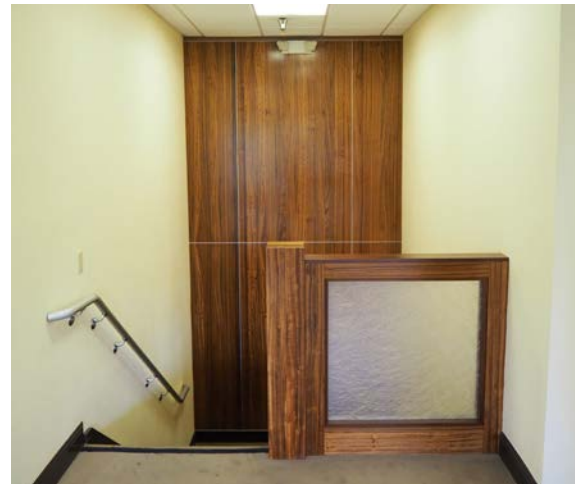
kiddermathews.com



This information supplied herein is from sources we deem reliable. It is provided without any representation, warranty or guarantee, expressed or implied as to its accuracy. Prospective Buyer or Tenant should conduct an independent investigation and verification of all matters deemed to be material, including, but not limited to, statements of income and expenses. Consult your attorney, accountant, or other professional advisor.

885 Gateway Center Way, Suite 201

San Diego, CA



Jeff Brown
858.369.3016
jbrown@kiddermathews.com
LIC #01496665

Mickey Morera
858.369.3030
mmorera@kiddermathews.com
LIC #00950071

kiddermathews.com

km Kidder Mathews

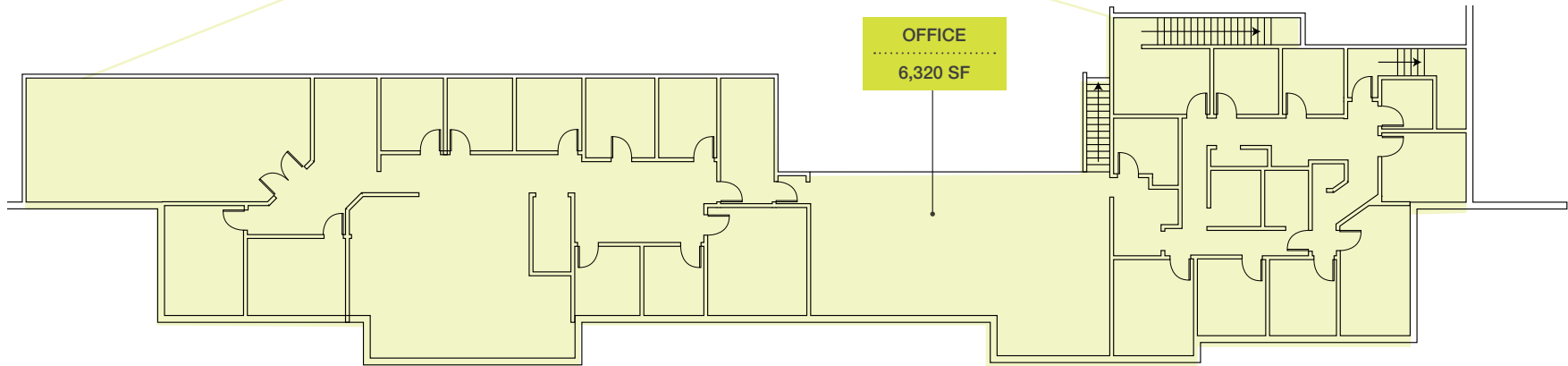
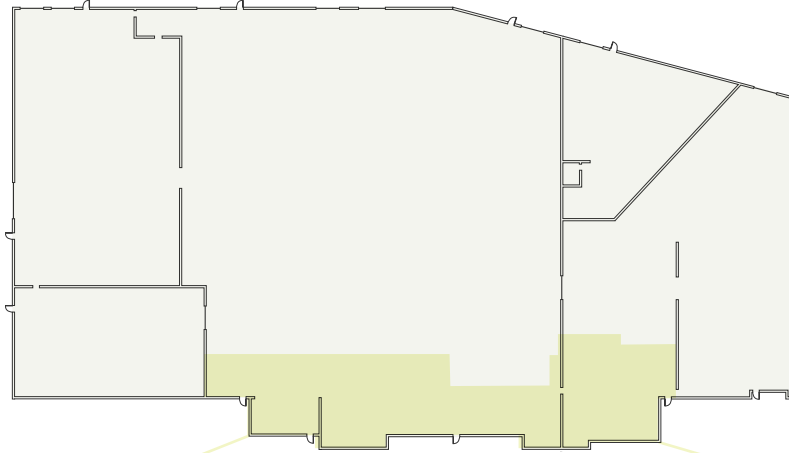
This information supplied herein is from sources we deem reliable. It is provided without any representation, warranty or guarantee, expressed or implied as to its accuracy. Prospective Buyer or Tenant should conduct an independent investigation and verification of all matters deemed to be material, including, but not limited to, statements of income and expenses. Consult your attorney, accountant, or other professional advisor.

885 Gateway Center Way, Suite 201

San Diego, CA

Floor Plan

FIRST FLOOR



SECOND FLOOR

Jeff Brown

858.369.3016
jbrown@kiddermathews.com
LIC #01496665

Mickey Morera

858.369.3030
mmorera@kiddermathews.com
LIC #00950071

kiddermathews.com

