

189 N. BERNARDO AVENUE

MOUNTAIN VIEW, CA



PROPERTY HIGHLIGHTS



1ST FLOOR AVAILABLE

Entire ±31,636 SF floor (divisible to ±23,636 SF) for lease with future expansion opportunities



ON-SITE AMENITIES

Numerous outdoor amenity areas including basketball & volleyball



IDENTITY

High-image office building with prominent Central Expressway identity



PARKING

3.7/1,000 on-site parking with EV charging stations



NEARBY RETAIL

5-Minute drives to Downtown Mountain View and Sunnyvale restaurants and shops



HIGHWAY ACCESS

Immediate access to Central Expressway and HWYs 237, 85, & 101



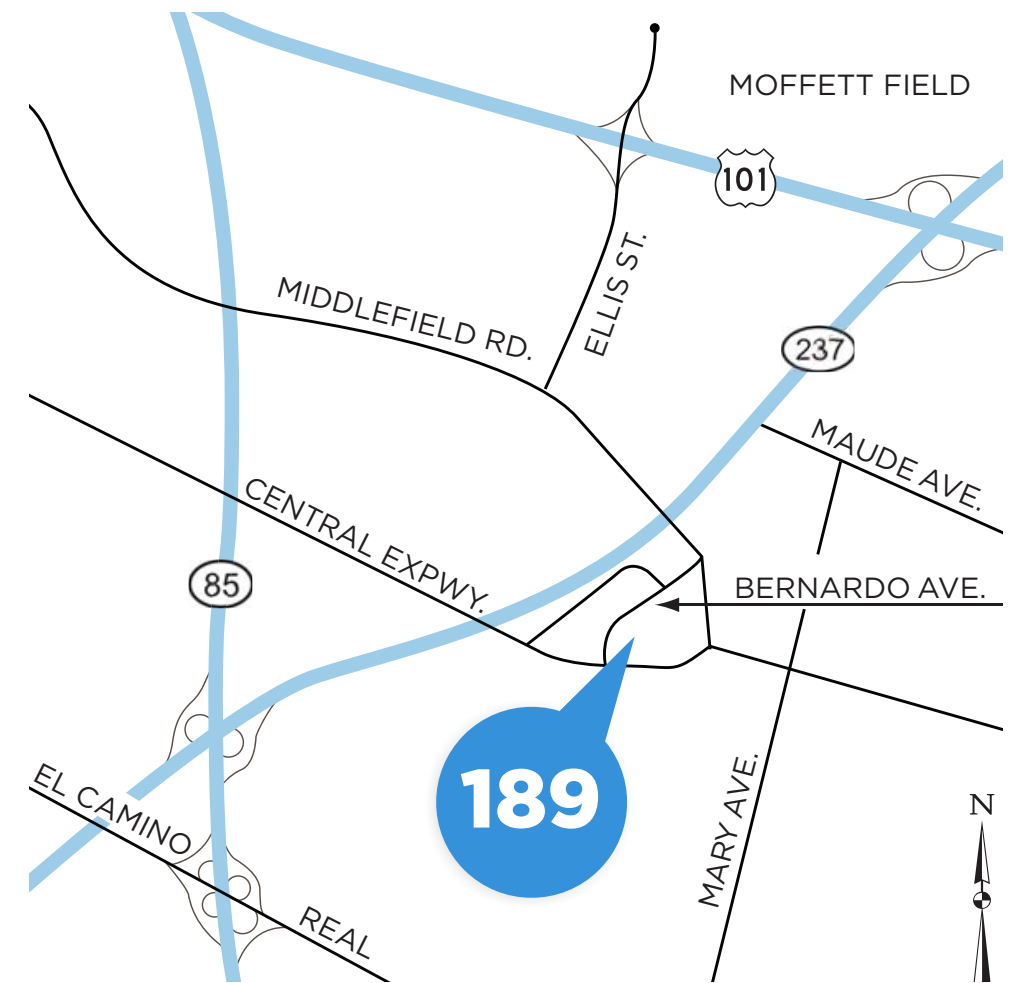
TRANSPORTATION

Walk to Light Rail with access to Mountain View CalTrain Station



GREAT NEIGHBORS

Surrounded by some of Silicon Valley's most prominent companies



ALEX LAGEMANN | Director | +1 408 221 2310 | alex.lagemann@cushwake.com | LIC #02024474

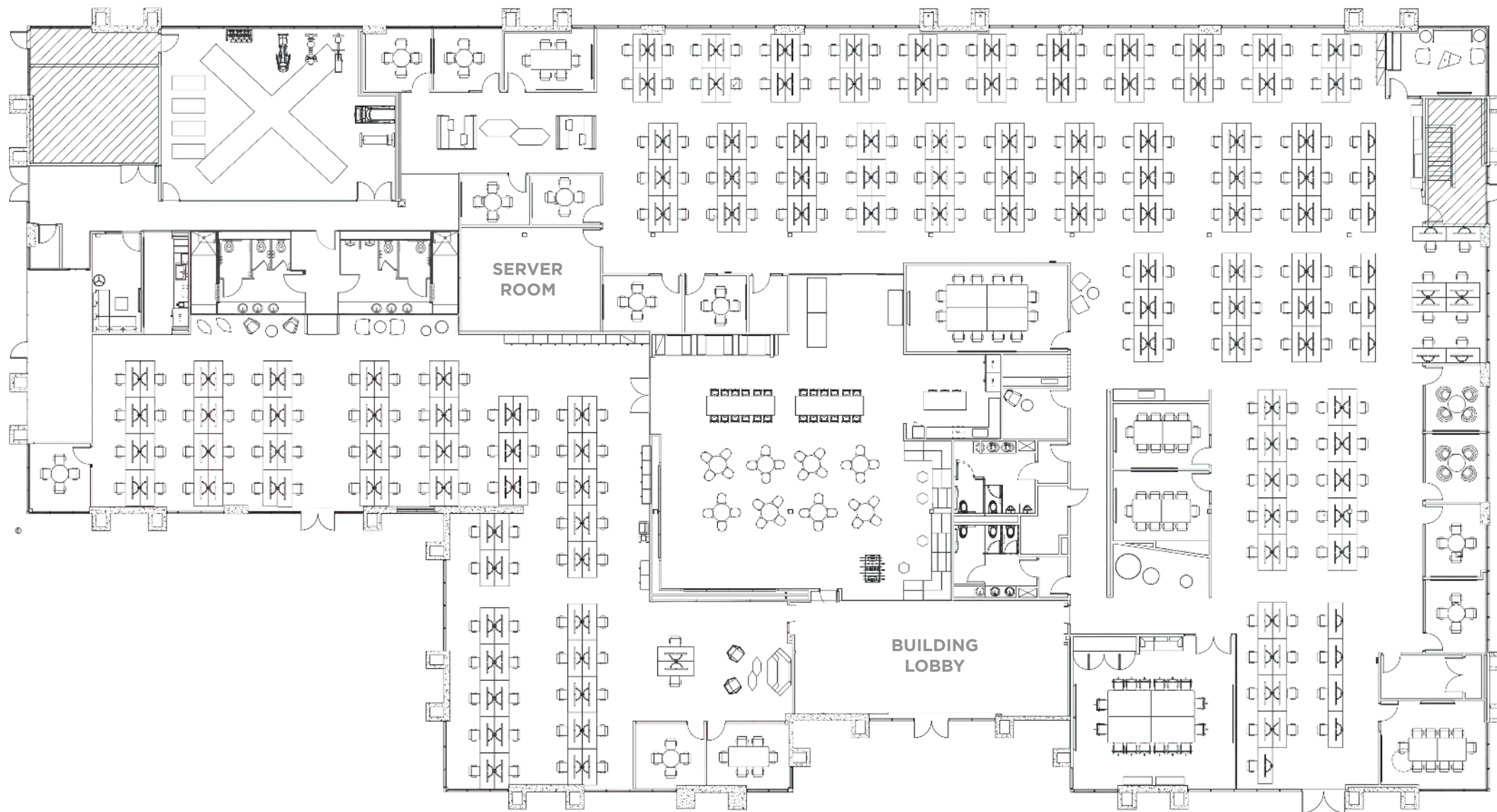
BRANDON BAIN | Executing Managing Director | +1 408 615-3416 | brandon.bain@cushwake.com | LIC #01308375

ERIK HALLGRIMSON | Vice Chairman | +1 408 615 3435 | erik.hallgrimson@cushwake.com | LIC #01274540

189 N. Bernardo Ave., Mountain View, CA

1ST FLOOR

±31,636 SF



SUITE HIGHLIGHTS:

- 14 Private Offices
- 8 Conference Rooms
- 241 Wired Desks
- Cafeteria & Coffee Bars
- Private Gym
- IT & Server Rooms
- Large Open Office
- In-Suite Restrooms
- Showers
- Mother's Room
- Potential Plug-N-Play

ALEX LAGEMANN | Director | +1 408 221 2310 | alex.lagemann@cushwake.com | LIC #02024474

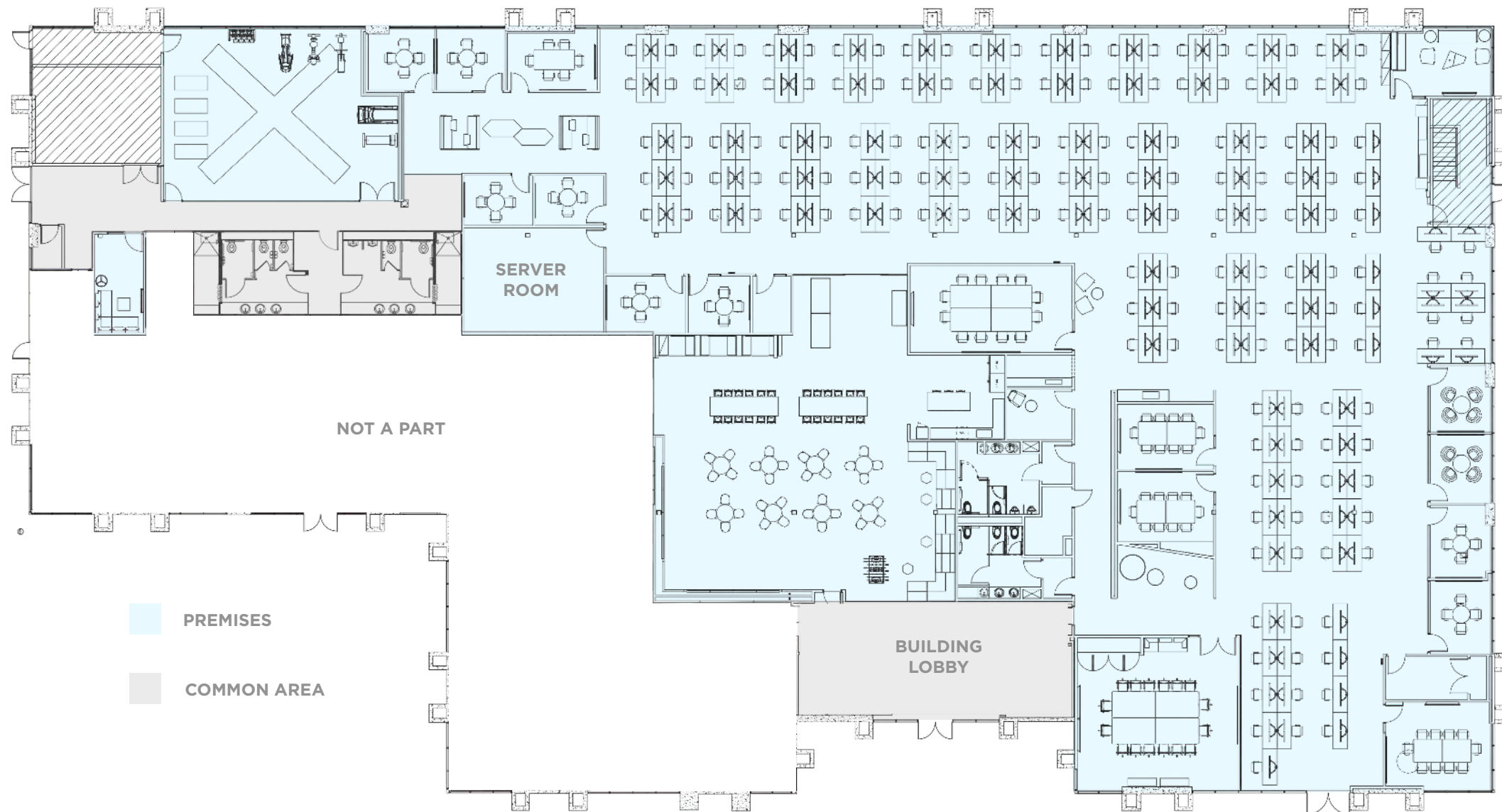
BRANDON BAIN | Executing Managing Director | +1 408 615-3416 | brandon.bain@cushwake.com | LIC #01308375

ERIK HALLGRIMSON | Vice Chairman | +1 408 615 3435 | erik.hallgrimson@cushwake.com | LIC #01274540

189 N. Bernardo Ave., Mountain View, CA

1ST FLOOR

±23,636 SF



SUITE HIGHLIGHTS:

- 10 Private Offices
- 6 Conference Rooms
- 161 Wired Desks
- Cafeteria & Coffee Bars
- Private Gym
- IT & Server Rooms
- Large Open Office
- In-Suite Restrooms
- Showers
- Mother's Room
- Potential Plug-N-Play

ALEX LAGEMANN | Director | +1 408 221 2310 | alex.lagemann@cushwake.com | LIC #02024474

BRANDON BAIN | Executing Managing Director | +1 408 615-3416 | brandon.bain@cushwake.com | LIC #01308375

ERIK HALLGRIMSON | Vice Chairman | +1 408 615 3435 | erik.hallgrimson@cushwake.com | LIC #01274540

189 N. Bernardo Ave., Mountain View, CA

INTERIOR PHOTOS



ALEX LAGEMANN | Director | +1 408 221 2310 | alex.lagemann@cushwake.com | LIC #02024474

BRANDON BAIN | Executing Managing Director | +1 408 615-3416 | brandon.bain@cushwake.com | LIC #01308375

ERIK HALLGRIMSON | Vice Chairman | +1 408 615 3435 | erik.hallgrimson@cushwake.com | LIC #01274540

189 N. Bernardo Ave., Mountain View, CA

PROPERTY PHOTOS



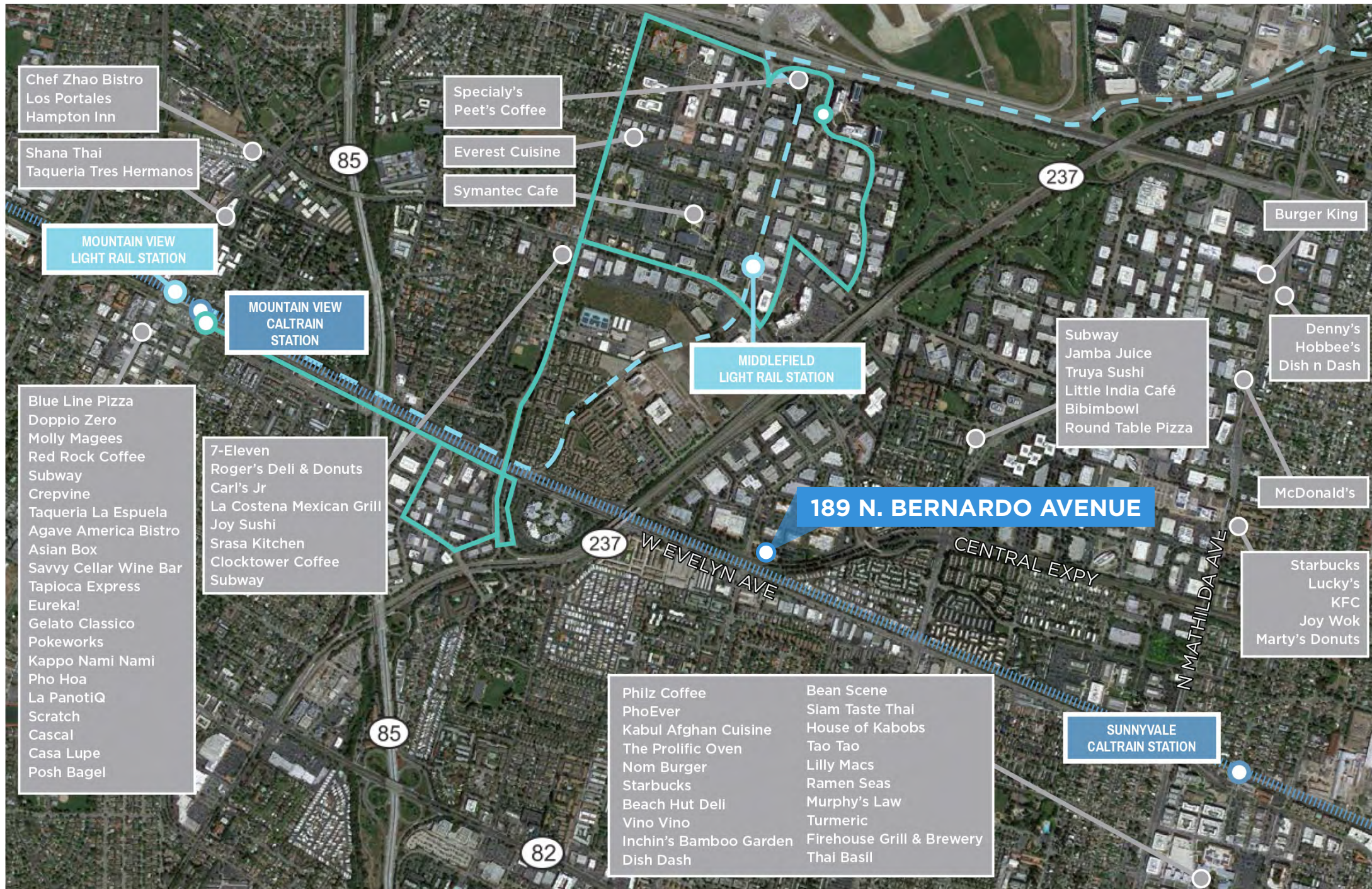
ALEX LAGEMANN | Director | +1 408 221 2310 | alex.lagemann@cushwake.com | LIC #02024474

BRANDON BAIN | Executing Managing Director | +1 408 615-3416 | brandon.bain@cushwake.com | LIC #01308375

ERIK HALLGRIMSON | Vice Chairman | +1 408 615 3435 | erik.hallgrimson@cushwake.com | LIC #01274540

189 N. Bernardo Ave., Mountain View, CA

TRANSPORTATION & AMENITIES



13 MINUTE WALK TO LIGHT RAIL

8 MINUTES ON LIGHT RAIL TO DOWNTOWN MOUNTAIN VIEW

52 MINUTES FROM DOWNTOWN MOUNTAIN VIEW TO SAN FRANCISCO VIA CALTRAIN

15 MINUTES TO MOUNTAIN VIEW CALTRAIN ON MVGO SHUTTLE

©2019 Cushman & Wakefield. All rights reserved. The information contained in this communication is strictly confidential. This information has been obtained from sources believed to be reliable but has not been verified. NO WARRANTY OR REPRESENTATION, EXPRESS OR IMPLIED, IS MADE AS TO THE CONDITION OF THE PROPERTY (OR PROPERTIES) REFERENCED HEREIN OR AS TO THE ACCURACY OR COMPLETENESS OF THE INFORMATION CONTAINED HEREIN, AND SAME IS SUBMITTED SUBJECT TO ERRORS, OMISSIONS, CHANGE OF PRICE, RENTAL OR OTHER CONDITIONS, WITHDRAWAL WITHOUT NOTICE, AND TO ANY SPECIAL LISTING CONDITIONS IMPOSED BY THE PROPERTY OWNER(S). ANY PROJECTIONS, OPINIONS OR ESTIMATES ARE SUBJECT TO UNCERTAINTY AND DO NOT SIGNIFY CURRENT OR FUTURE PROPERTY PERFORMANCE.

ALEX LAGEMANN | Director | +1 408 221 2310 | alex.lagemann@cushwake.com | LIC #02024474

BRANDON BAIN | Executing Managing Director | +1 408 615-3416 | brandon.bain@cushwake.com | LIC #01308375

ERIK HALLGRIMSON | Vice Chairman | +1 408 615 3435 | erik.hallgrimson@cushwake.com | LIC #01274540

189 N. Bernardo Ave., Mountain View, CA



FOR MORE INFORMATION, PLEASE CONTACT:

ALEX LAGEMANN | Director | +1 408 221 2310 | alex.lagemann@cushwake.com | LIC #02024474

BRANDON BAIN | Executing Managing Director | +1 408 615-3416 | brandon.bain@cushwake.com | LIC #01308375

ERIK HALLGRIMSON | Vice Chairman | +1 408 615 3435 | erik.hallgrimson@cushwake.com | LIC #01274540

