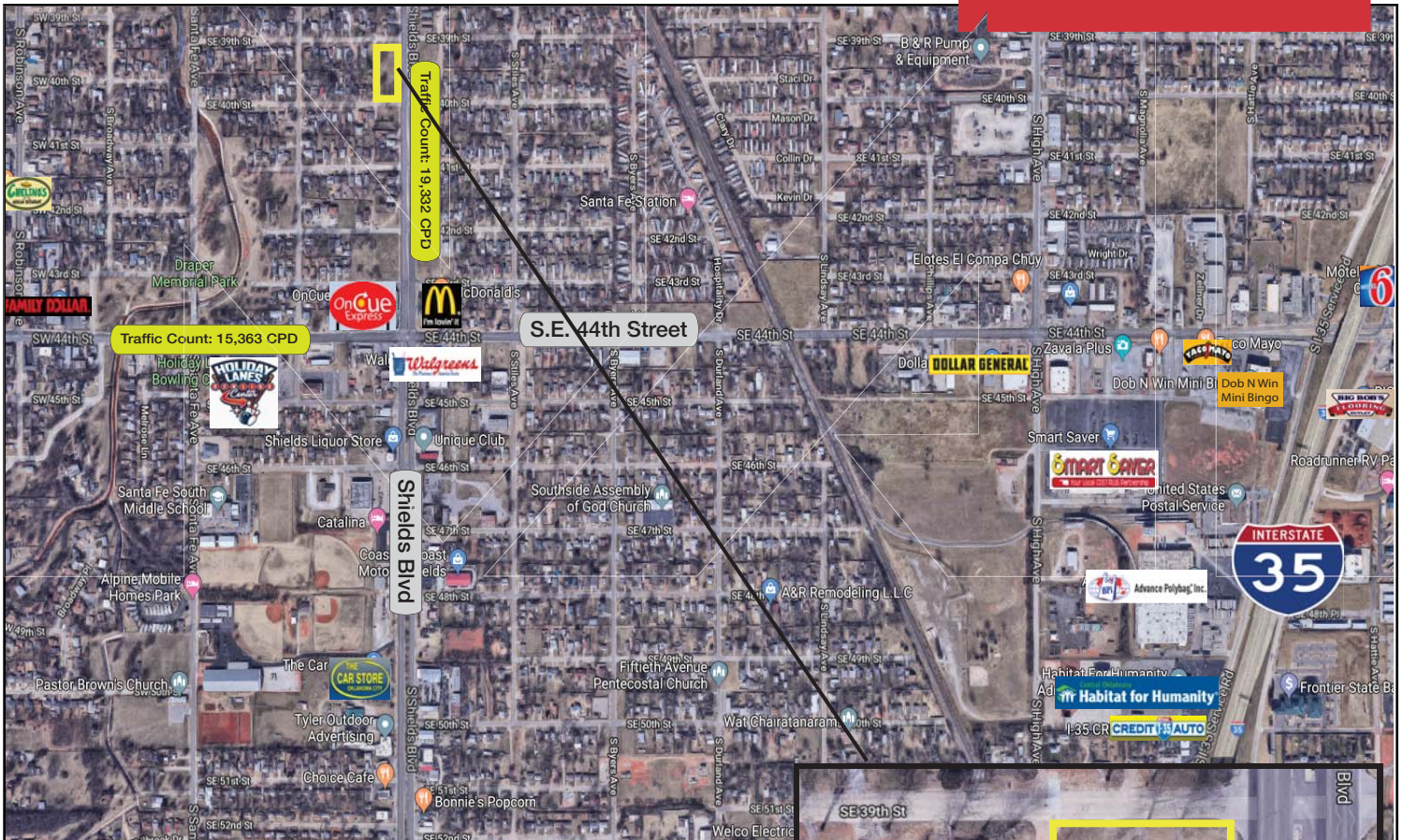


R-2 Zoned Land
For Sale

1.03 Acres MOL

Sales Price: \$300,000



4001-4023 S. Shields Boulevard

Oklahoma City, Oklahoma 73129

PROPERTY HIGHLIGHTS

- 1.03 Acres MOL of R-2 Zoned Land
- Well Developed Residential Area
- R-2 Zoning Allows Duplex Properties
- Mature Trees, Park Like Setting
- Quite Neighborhood, Close to Everything
- Dimensions: 300' x 150'
- Frontage: 300' on Shields Boulevard
- Minutes from Downtown OKC



www.naisullivangroup.com

Irmon Gray

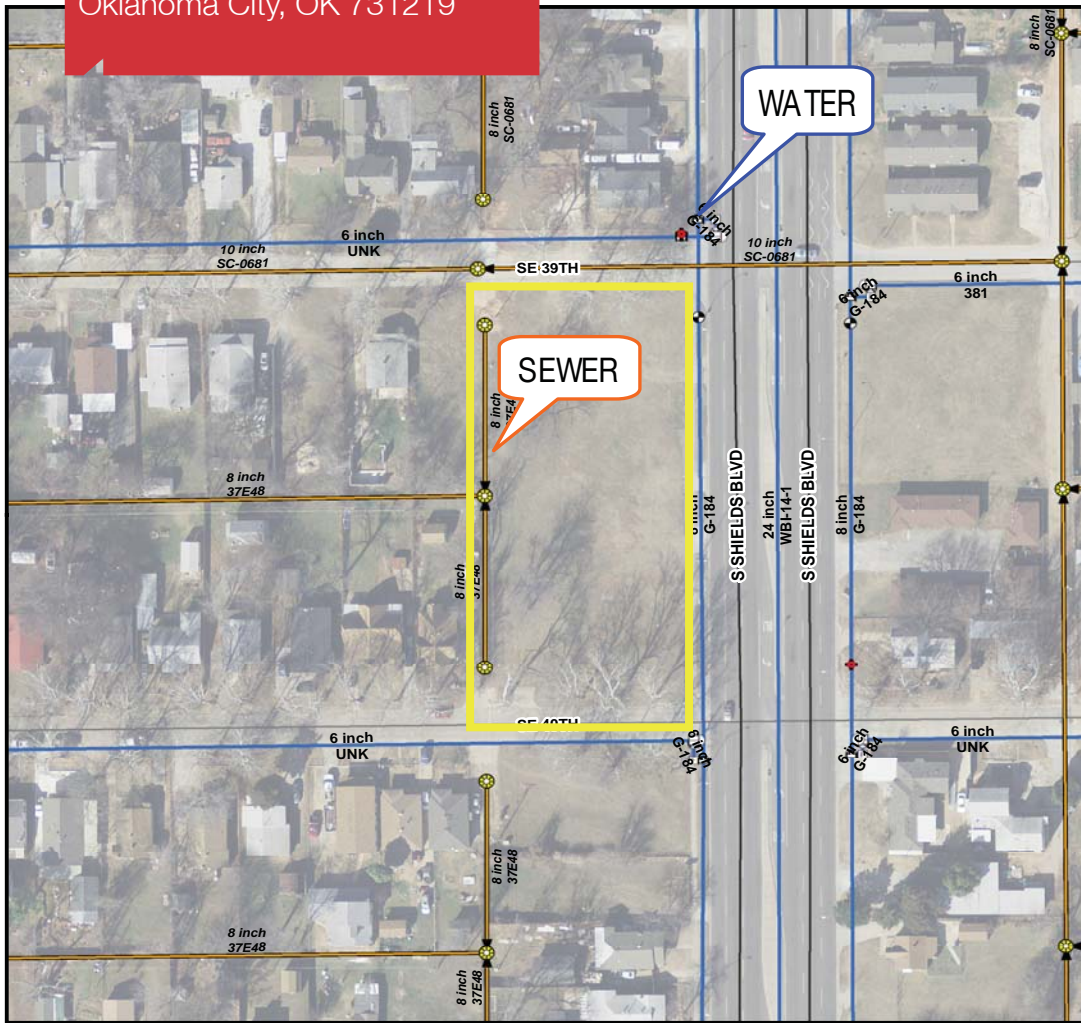
Cell: 1 405 474 7286

irmon@naisullivangroup.com

NO WARRANTY OR REPRESENTATION, EXPRESS OR IMPLIED, IS MADE AS TO THE ACCURACY OF THE INFORMATION CONTAINED HEREIN, AND THE SAME IS SUBMITTED SUBJECT TO ERRORS, OMISSIONS, CHANGE OF PRICE, RENTAL OR OTHER CONDITIONS, PRIOR SALE, LEASE OR FINANCING, OR WITHDRAWAL WITHOUT NOTICE, AND OF ANY SPECIAL LISTING CONDITIONS IMPOSED BY OUR PRINCIPALS NO WARRANTIES OR REPRESENTATIONS ARE MADE AS TO THE CONDITION OF THE PROPERTY OR ANY HAZARDS CONTAINED THEREIN ARE ANY TO BE IMPLIED.

4045 N.W. 64th Street, Suite 340
Oklahoma City, Oklahoma 73116
Office: 1 405 840 0600
Fax: 1 405 840 0610

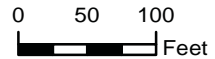
4001-4023 S. Shields Boulevard
Oklahoma City, OK 731219



Legend

- Standard Manhole
- Active, Oklahoma City
- Water Hydrant
- Gate
- Tapping

Neither the City nor any of its trusts nor any of their employees, officers, or agents warrant or represent that the information or data on this document is accurate or appropriate for use or re-use for any purpose. The user of this document assumes the sole duty and full responsibility for the verification of the information and data contained therein. Any use of or reliance upon this document or the information or data contained therein is solely, totally, and exclusively at the users own risk.



Created by: alison.estus
Printed: 7/22/2019
City of Oklahoma City - Utilities Dept.



DEMOGRAPHICS

Population		
1 Mile: 10,722	3 Mile: 86,319	5 Mile: 240,756
Average Household Income		
1 Mile: \$31,184	3 Mile: \$32,210	5 Mile: \$39,816
Total Households		
1 Mile: 3,736	3 Mile: 29,943	5 Mile: 90,853



Irmon Gray

Cell: 1 405 474 7286

irmon@naisullivangroup.com

www.naisullivangroup.com

4045 N.W. 64th Street, Suite 340
Oklahoma City, Oklahoma 73116
Office: 1 405 840 0600
Fax: 1 405 840 0610

