



ROLLING OAKS MEDICAL CENTER

CLASS "A" MEDICAL OFFICE SPACE FOR LEASE

375 & 415 E. Rolling Oaks Drive • 425 Haaland Drive
Thousand Oaks, California

www.thousandoaksmedicaloffice.com

ERIC NISHIMOTO
818.444.4984
enishimoto@lee-re.com
License ID #01462339

SCOTT SILVERSTEIN
818.223.4391
ssilverstein@lee-re.com
License ID #00877034

 **LEE &
ASSOCIATES**
COMMERCIAL REAL ESTATE SERVICES



ROLLING OAKS MEDICAL CENTER

CLASS "A" MEDICAL
OFFICE SPACE FOR LEASE



PROPERTY HIGHLIGHTS

- Great Location near the Thousand Oaks Surgical Hospital (TOSH)
- Class "A" Medical Space
- Multiple Suites Available
- Within a 270,000 S.F. Medical Office Campus
- Parking Garage and Surface Stalls available
- Storage Units in the Parking Garage
- Excellent Access to Ventura (101) Freeway
- Pride of Ownership Evident

CLICK BELOW FOR
MEDICAL CAMPUS
VIDEO TOUR

 **PLAY VIDEO**

www.thousandoaksmedicaloffice.com

ROLLING OAKS MEDICAL CENTER

CLASS "A" MEDICAL
OFFICE SPACE FOR LEASE

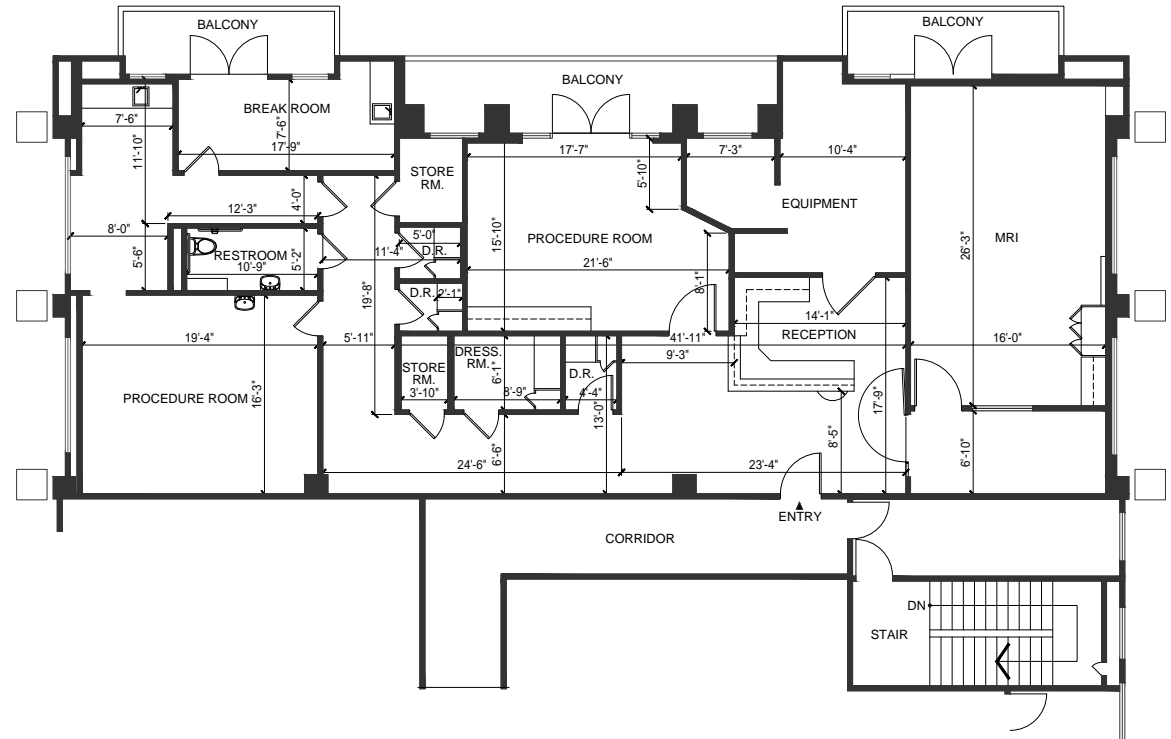


375 Rolling Oaks Drive

- AVAILABLE:** Suite #130 - 3,156 RSF
- POSSESSION:** August 2022
- TERM:** 3-10 Years
- RENTAL:** \$3.15/RSF
- TI ALLOWANCE:** Negotiable
- LEASE TYPE:** Modified Gross + Electrical & Janitorial
- EXPENSE CALCS:** Base Year
- PARKING:** 5/1,000 USF with subterranean parking available

www.thousandoaksmedicaloffice.com

FLOORPLAN



MEDICAL IMAGING SPACE

375 Rolling Oaks Drive • Suite 130

NOT TO SCALE

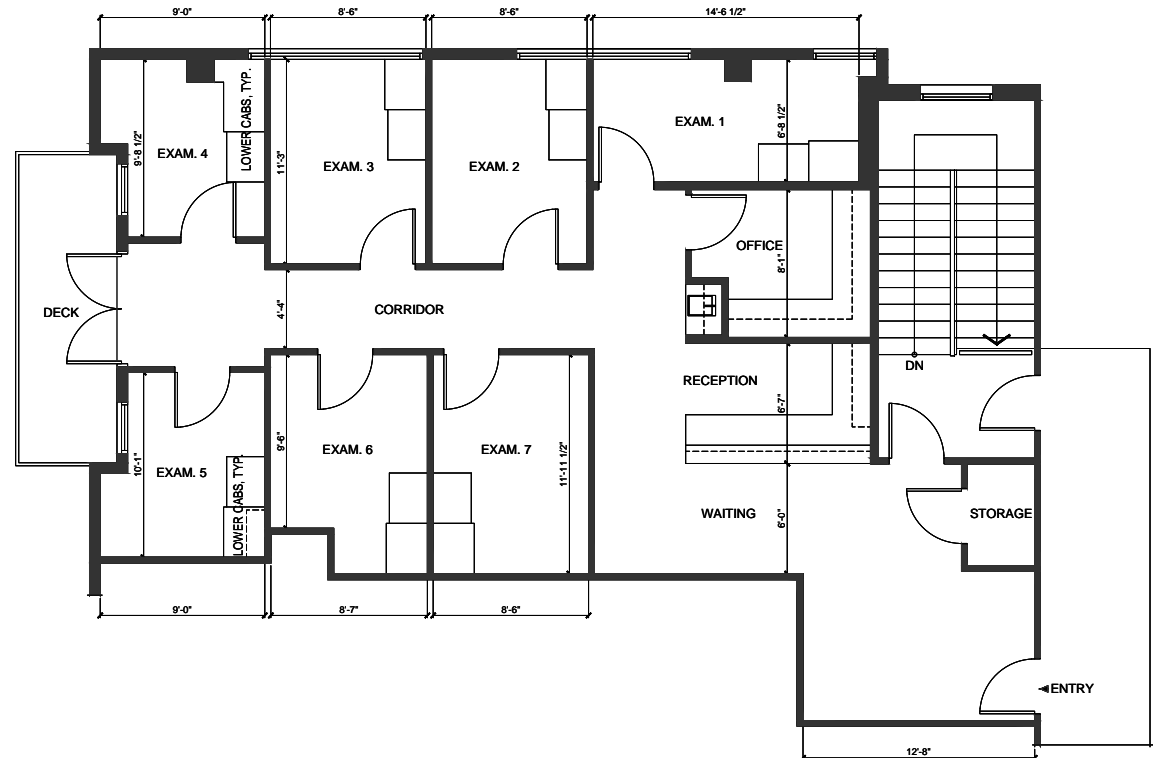


375 Rolling Oaks Drive

- AVAILABLE:** Suite #205 - 1,542 RSF
- POSSESSION:** August 2022
- TERM:** 3-10 Years
- RENTAL:** \$3.15/RSF
- TI ALLOWANCE:** Negotiable
- LEASE TYPE:** Modified Gross + Electrical & Janitorial
- EXPENSE CALCS:** Base Year
- PARKING:** 5/1,000 USF with subterranean parking available

www.thousandoaksmedicaloffice.com

FLOORPLAN



375 Rolling Oaks Drive • Suite 205

NOT TO SCALE

ROLLING OAKS MEDICAL CENTER

CLASS "A" MEDICAL
OFFICE SPACE FOR LEASE



375 Rolling Oaks Drive

AVAILABLE: Suite #210 - 11,657 RSF Divisible

POSSESSION: August 2022

TERM: 3-10 Years

RENTAL: \$3.15/RSF

TI ALLOWANCE: Negotiable

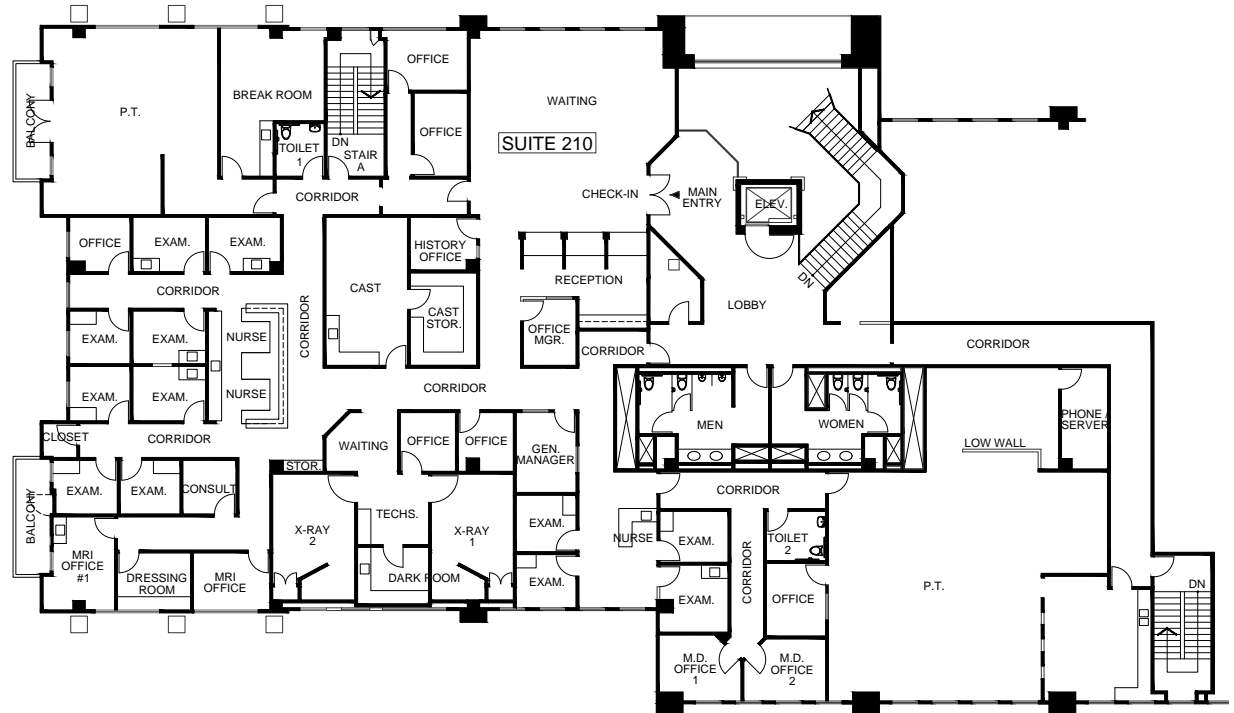
LEASE TYPE: Modified Gross + Electrical & Janitorial

EXPENSE CALCS: Base Year

PARKING: 5/1,000 USF with subterranean parking available

www.thousandoaksmedicaloffice.com

FLOORPLAN



375 Rolling Oaks Drive • Suite 210

NOT TO SCALE

ROLLING OAKS MEDICAL CENTER

CLASS "A" MEDICAL
OFFICE SPACE FOR LEASE

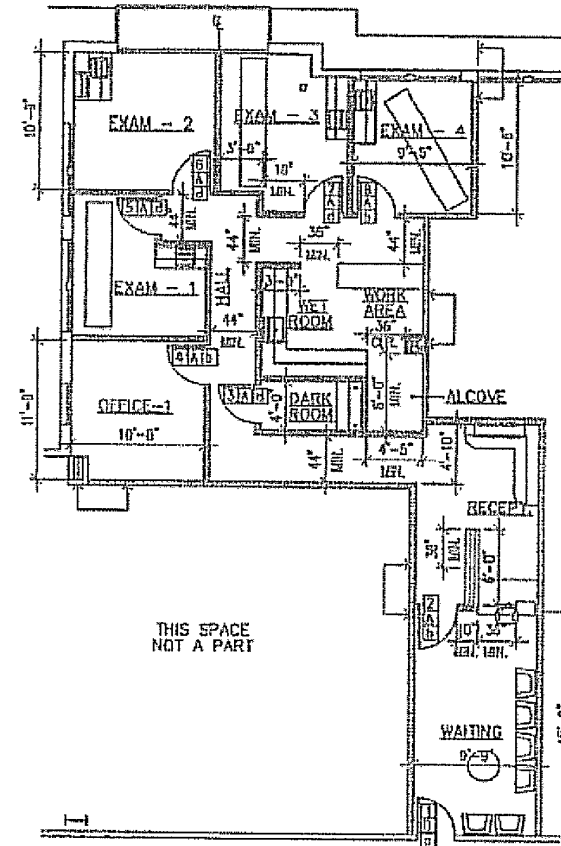


415 Rolling Oaks Drive

- AVAILABLE:** Suite #210 - 1,504 RSF
- POSSESSION:** Vacant
- TERM:** 3-10 Years
- RENTAL:** \$3.15/RSF
- TI ALLOWANCE:** Negotiable
- LEASE TYPE:** Modified Gross + Electrical & Janitorial
- EXPENSE CALCS:** Base Year
- PARKING:** 5/1,000 USF with subterranean parking available

www.thousandoaksmedicaloffice.com

FLOORPLAN



415 Rolling Oaks Drive • Suite 210

NOT TO SCALE

ROLLING OAKS MEDICAL CENTER

CLASS "A" MEDICAL
OFFICE SPACE FOR LEASE

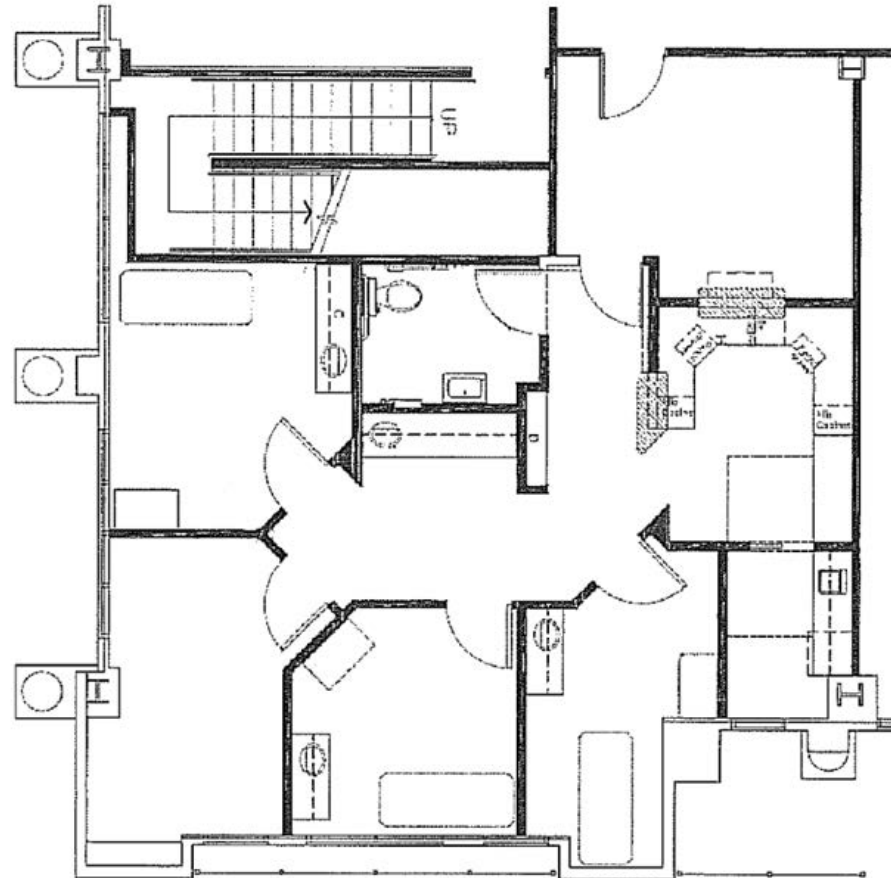


425 Haaland Drive

- AVAILABLE:** Suite #105 - 1,265 RSF
- POSSESSION:** Vacant
- TERM:** 3-10 Years
- RENTAL:** \$3.15/RSF
- TI ALLOWANCE:** Negotiable
- LEASE TYPE:** Modified Gross + Electrical & Janitorial
- EXPENSE CALCS:** Base Year
- PARKING:** 5/1,000 USF with subterranean parking available

www.thousandoaksmedicaloffice.com

FLOORPLAN



425 Haaland Drive • Suite 105

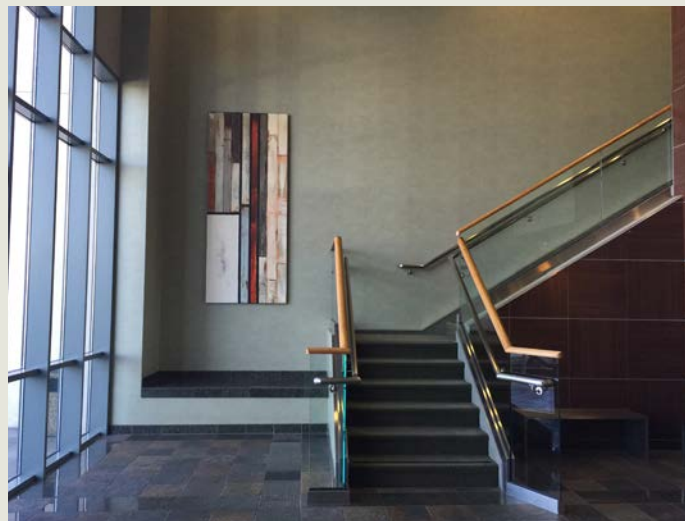
NOT TO SCALE

ROLLING OAKS MEDICAL CENTER

CLASS "A" MEDICAL
OFFICE SPACE FOR LEASE

BUILDING PHOTOS - 425 Haaland Dr.

www.thousandoaksmedicaloffice.com



CLICK BELOW FOR
425 HAALAND DRIVE
VIDEO TOUR



ROLLING OAKS MEDICAL CENTER

CLASS "A" MEDICAL
OFFICE SPACE FOR LEASE

BUILDING PHOTOS - 375 E. Rolling Oaks Dr.

www.thousandoaksmedicaloffice.com



CLICK BELOW FOR
375 E. ROLLING OAKS DRIVE
VIDEO TOUR



ROLLING OAKS MEDICAL CENTER

CLASS "A" MEDICAL
OFFICE SPACE FOR LEASE

BUILDING PHOTOS - 415 E. Rolling Oaks Dr.

www.thousandoaksmedicaloffice.com



CLICK BELOW FOR
415 E. ROLLING OAKS DRIVE
VIDEO TOUR



ROLLING OAKS MEDICAL CENTER

CLASS "A" MEDICAL OFFICE SPACE FOR LEASE

LOCAL AMENITIES



LOS ROBLES
HOSPITAL & MEDICAL CENTER

Ralphs VONS Bank of America WELLS FARGO
Marshalls JO-ANN fabric and craft stores McDonald's SALLY BEAUTY SUPPLY
HomeGoods DOLLAR TREE CHASE

macy's NORDSTROM WILLIAMS & SONOMA AMC THEATRES
JC Penney Apple Store GameStop DICK'S Sporting Goods Victoria's Secret Red Robin L.S. & D.
WHITE BLACK Justice Monchie's GNC LiveWell at&t
Chesecake Factory Disney CHAMPS Lids active LOFT EXPRESS
PizzalRev Urban Outfitters Firestone Gymboree J.CREW CHASE
Foot Locker ALDO sleep number CHIPOTLE

OLD NAVY Burlington REGAL CINEMAS PETCO
Cold Stone Baby Depot Shaky's FIVE GUYS
CINEMA POSTAL DUNKIN' DONUTS
GPECOS PIZZERIA DSW SHOE rack AZ Edible
metroPCS Sprint Sunset Chick-fil-A ULTA

BEST BUY Office DEPOT ROSS DRESS FOR LESS
Mimi's Cafe SUBWAY FLENSCRAFTERS
Habit Burger Grill in the Box WELLS FARGO 7 ELEVEN Draughts
at&t Total Wine & More

Lasens Kalologie Thousand Oaks Civic Arts Plaza
PEPBOYS AUTO FITNESS

CVS pharmacy Vitamin Shoppe BIG5 TILLYS CALIFORNIA UNITED BANK
Premier America VENTURA COUNTY CREDIT UNION
MARCELLO Urbane Cafe PACIFIC WESTERN BANK NOAH'S Love Sushi
CHASE citibank UnionBank Jamba Juice

SUBJECT
Rolling Oaks Medical Center
Thousand Oaks, CA

Thousand Oaks SURGICAL HOSPITAL
A Center of Lee & Associates Medical Office

For more information please contact

ERIC NISHIMOTO
818.444.4984
enishimoto@lee-re.com
License ID #01462339

SCOTT SILVERSTEIN
818.223.4391
ssilverstein@lee-re.com
License ID #00877034

www.lee-associates.com



COMMERCIAL REAL ESTATE SERVICES
Lee & Associates® - LA North/Ventura, Inc.
Corporate ID #01191898
A Member of the Lee & Associates® Group of Companies
5707 Corsa Ave., Suite 200
Westlake Village, CA 91362
P:818.223.4388 F:818.591.1450
www.lee-associates.com

No warranty or representation is made to the accuracy of the foregoing information. Terms of sale or lease and availability are subject to change or withdrawal without notice