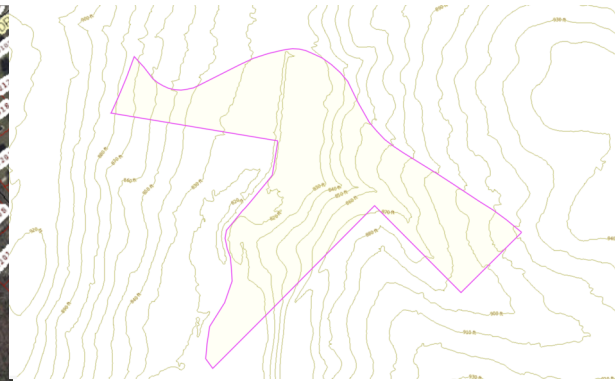
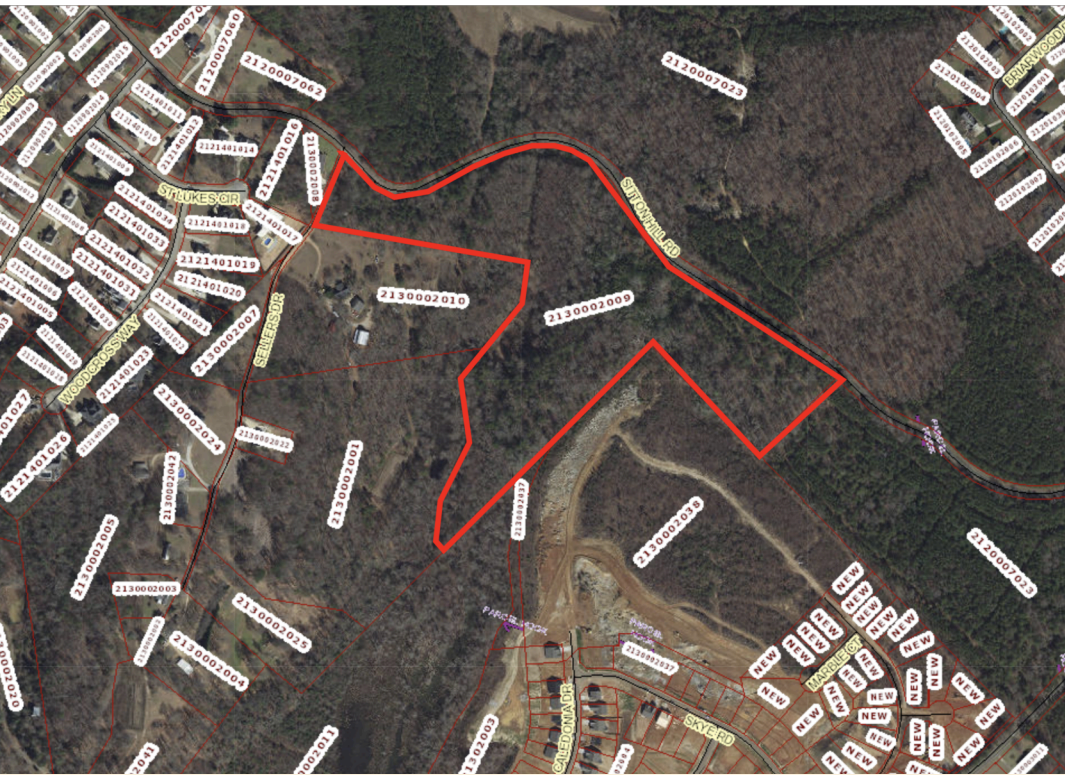


2336 Sitton Hill Road Easley, SC 29642

*was \$35,000 acre
now \$25,000 acre*



High growth area. Residential development is adjacent to subject property. Ideal for residential development. Property has no zoning. Less than 5 miles to highway I-85 and highway 123.

Tax-ID [2130002009](#)

[Excellent Frontage](#)

[Google Maps](#)

[Smooth Contour Lines](#)

Adjacent to 240K new builds

Adjacent subdivision has all utilities

This property has no zoning

Less than 3 miles from Hwy. 153 (31,000 VPD SCDOT)



Ernest Crosby

Commercial Real Estate Sales
ECrosby@JoynerCommercial.com
864-245-2293
www.JoynerCommercial.com



**BERKSHIRE
HATHAWAY**
HomeServices

C. Dan Joyner, REALTORS®

COMMERCIAL DIVISION

24 Vardry Street, Ste. 401 Greenville, SC 29601

©2019 BHH Affiliates, LLC. Real Estate Brokerage Services are offered through the network member franchisees of BHH Affiliates, LLC. Most franchisees are independently owned and operated. Berkshire Hathaway HomeServices and the Berkshire Hathaway HomeServices symbol are registered service marks of HomeServices of America, Inc.® Information not verified or guaranteed. If your property is currently listed with a Broker, this is not intended as a solicitation.