

For Sale ±11.9 Acres

10340 Farrow Road, Columbia, South Carolina

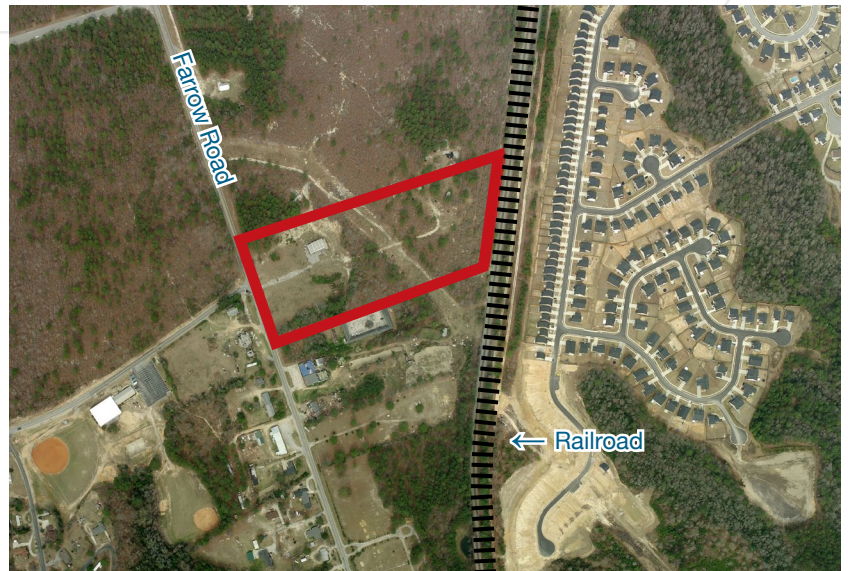
Key Features

- Level topography
- Symmetrical rectangular parcel
- Adjacent to rail
- Zoning: M-1 (Light Industrial)

Price

- \$475,000

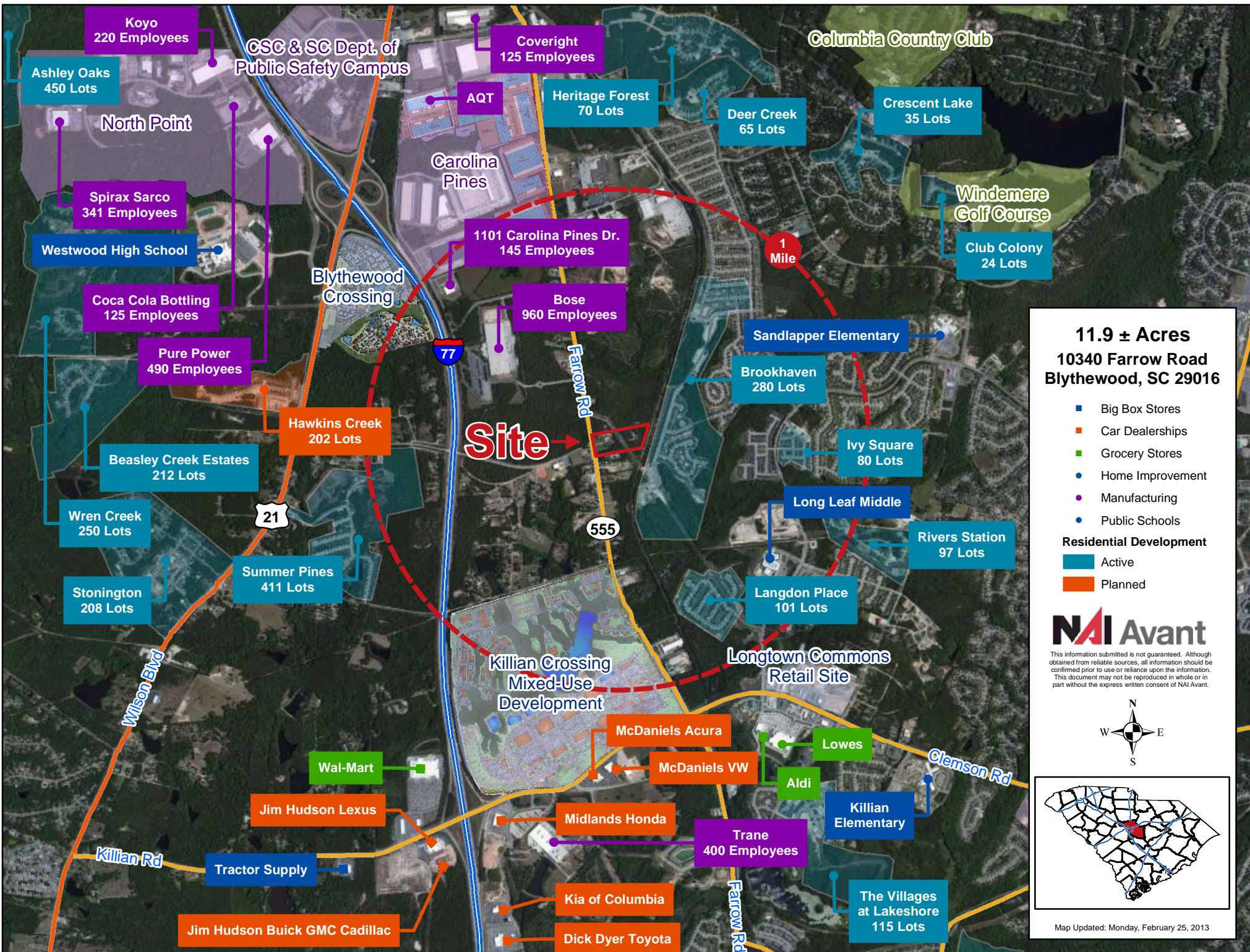
Location



For more
information

Mac Fanning - Exclusive Broker

807 Gervais Street, Suite 301
Columbia, SC 29201
Direct: 803-744-9840
Cell: 803-665-7777
mfanning@naiavant.com
www.naiavant.com



11.9 ± Acres
10340 Farrow Road
Blythewood, SC 29016

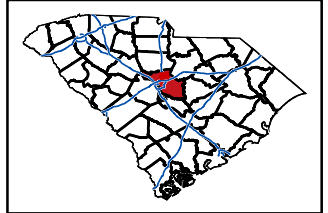
- Big Box Stores
- Car Dealerships
- Grocery Stores
- Home Improvement
- Manufacturing
- Public Schools

Residential Development

- Active
- Planned

NAI Avant

This information submitted is not guaranteed. Although obtained from reliable sources, all information should be confirmed prior to use or reliance upon the information. This document may not be reproduced in whole or in part without the express written consent of NAI Avant.



Map Updated: Monday, February 25, 2013